



**Plate I** A painting by Francesco Solimena, *Joseph and Potiphar's Wife*

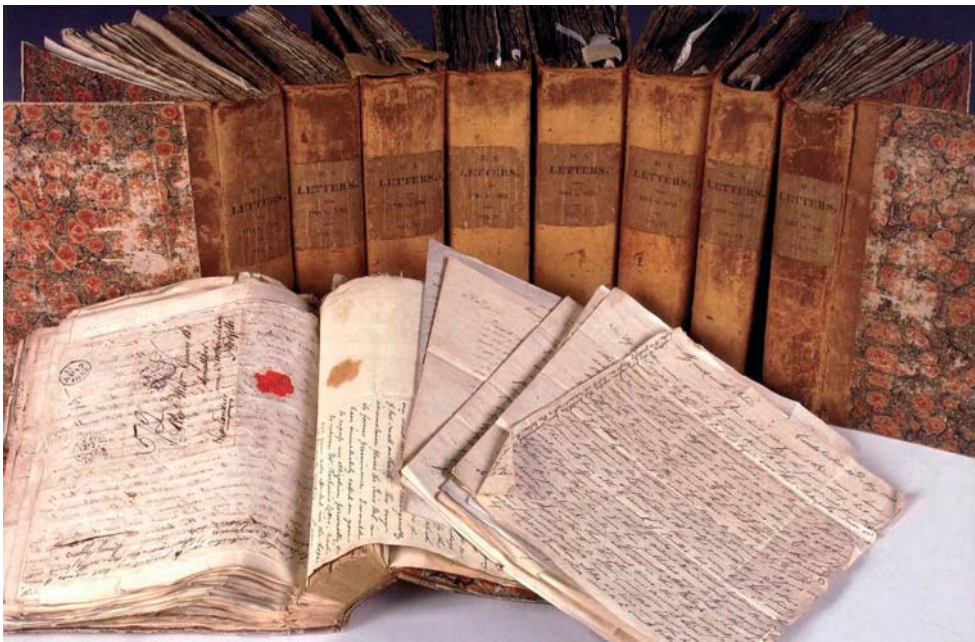
**Plate II** A painting by Michiel van Musscher, *Portrait of an Artist in his Studio*



**Plate III** A watercolour painting by J M W Turner, *The Dark Rigi, Lake of Lucerne*, 1842

**Plate IV** Archive of the Reverend William Gunn

**Plate V** A watercolour painting by J M W Turner, *Lake of Lucerne, from the Landing Place at Fluelen, Looking towards Bauen and Tell's Chapel, Switzerland*, c.1815





**Plate VI** An Anglo-Saxon gilded mount with interlace decoration



**Plate VII** An Anglo-Saxon great square headed brooch

**Plate VIII** A watercolour painting by J M W Turner, *the Blue Rigi, Lake of Lucerne, Sunrise, 1842*





**Plate IX** A painting by Alonso Sánchez Coello, *The Infante Don Diego*



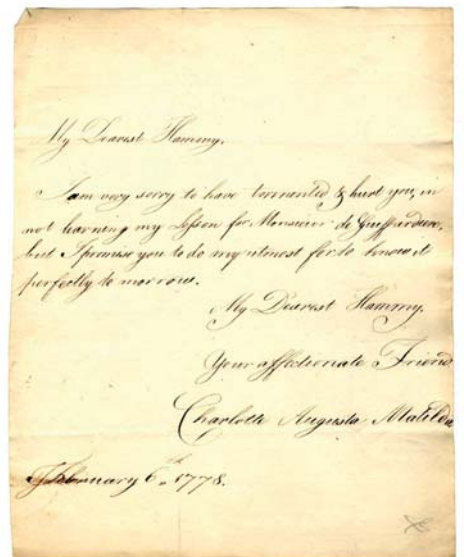
**Plate X** A collection of manuscript and printed maps cut as jigsaws and housed in a mahogany cabinet



**Plate XI** An eighteenth-century mantua and petticoat

**Plate XII** A felt appliqué and patch-worked album coverlet made by Ann West in 1820

**Plate XIII** Diaries, correspondence and manuscript volumes of Mary Hamilton







**Plate XIV** A painting by John Constable, *Flatford Lock from the Mill House*

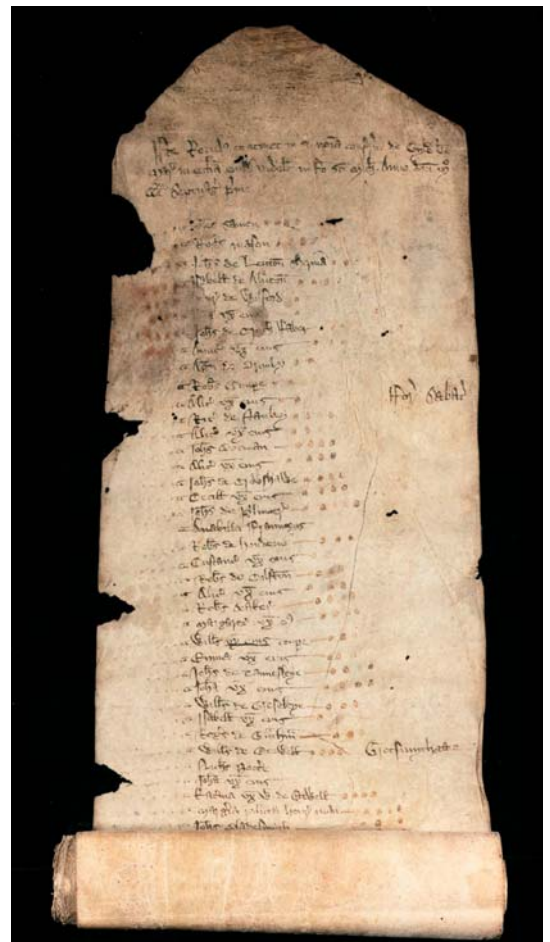
**Plate XV** A painting by Karel van Mander the Elder, *The Crucifixion*

**Plate XVI** A bronze statuette after Pierre Legros the Younger, *Marsyas*

**Plate XVII** An eighteenth-century man's embroidered banyan and waistcoat

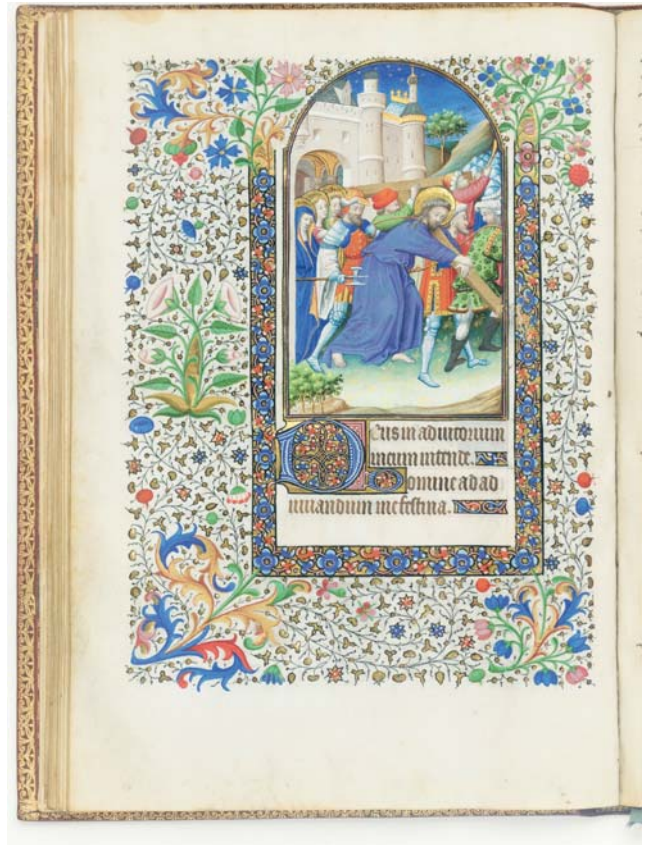
**Plate XVIII** A Neolithic 'jadeite' axe-head from Sturminster Marshall, Dorset

**Plate XIX** The guild roll of the Guild of St Mary, Nottingham, 1371





**Plate XX** An Anglo-Saxon silver-gilt zoomorphic mount



**Plate XXI** A fifteenth-century illuminated manuscript of the Hours of the Passion

**Plate XXII** An eighteenth-century Union flag

