



719. Kirkham area, Lancashire



723. Pavenham, Bedfordshire



726. South Essex, Essex



777. South West Essex, Essex



720. Thakeham, West Sussex



727. Bletchingley, Surrey



778.1. Witham area, Essex



721. Collingbourne Kingston, Wiltshire



724. Little Budworth, Cheshire



728. Drifffield area, East Riding of Yorkshire



778.2. Witham area, Essex



722. Edworth, Bedfordshire



725. Chelmsford area, Essex



779. Wendover, Buckinghamshire



782. Ryther area, North Yorkshire



789. Little Brickhill, Milton Keynes



790. Milborne Port, Somerset



780. High Roding, Essex



791. North Perrott, Somerset



781. Monks Kirby, Warwickshire



788. Newent, Gloucestershire



792. Woodbridge area, Suffolk



803. Ham and Stone, Gloucestershire



805.2. Bayston Hill, Shropshire



804. Denmead, Hampshire



806. Honeybourne, Worcestershire



805.1. Bayston Hill, Shropshire



807. Highnam, Gloucestershire



816. Billingshurst area, West Sussex (Actual size)



817. Highnam, Gloucestershire



818. Littlehempston, Devon (Actual size)



830. Stroud area, Hampshire



831. Kingstone, Herefordshire



832. Wells area, Somerset



833. Brailes, Warwickshire



839. West Hagbourne, Oxfordshire (Actual size)



840. Udimore, East Sussex



841. Fyfield and Tubney, Oxfordshire



846. Wiveton, Norfolk



847. Wellesbourne, Warwickshire



848. Lydd, Kent



849. Battle, East Sussex



857. Shalfleet, Isle of Wight



858. Stalbridge, Dorset



859. West Charlton area, Devon



861. Haslingfield, Cambridgeshire



862. Pulham, Dorset



873. Compton, Surrey



877. Milborne Port, Somerset



878. Totnes, Devon



879. Brantingham, East Riding of Yorkshire



880. Ilam, Staffordshire



1042. Little Horwood, Buckinghamshire – a selection of gold Iron Age staters, c. 60–50 BC



1043a. Climping, West Sussex
Gold 'climping' type stater, c. 50–20 BC



1043b. Climping, West Sussex
Gold British QB stater, c. 50–20 BC



1046a. East of Colchester, Essex
Gold stater of Addedomaros, 20 BC – AD 10



1046b. East of Colchester, Essex
Gold stater of Addedomaros, 20 BC – AD 10



1055a. North Suffolk, Suffolk
Icenian silver unit: Face Horse type, c. AD 30–60
(*BMC* 3646)



1055b. North Suffolk, Suffolk
Icenian silver unit: ANTED, c. AD 30–60 (*BMC* 3848)



1055c. North Suffolk, Suffolk
Icenian silver unit: ANTED, c. AD 30–60 (*BMC* 3963)



1055d. North Suffolk, Suffolk
Icenian silver unit: ECEN, c. AD 30–60 (*BMC* 4034)



1055e. North Suffolk, Suffolk
Icenian silver unit: ED, c. AD 30–60 (*BMC* 4261)



1059a. Aldham, Essex
Silver denarius of C Vibius Pansa, 48 BC



1059b. Aldham, Essex
Silver denarius of Mark Antony, 32–31 BC



1060b. Crondall, Hampshire
Silver denarius of Tiberius, AD 14–37, Lyon mint



1060a. Crondall, Hampshire
Silver denarius of Roscius Fabatus, 64 BC



1062a. Albrighton, Shropshire
69 silver denarii of the Roman Republican and Imperial periods, 140 BC – AD 37



1062b. Albrighton, Shropshire
Reverses



1067a. Dymock, Gloucestershire
Silver denarius of Hadrian (AD 117–38) (RIC41)



1067b. Dymock, Gloucestershire
Silver denarius of Hadrian (AD 117–38) (RIC39a)



1076. Bridgnorth area, Shropshire
Seven silver denarii, ranging from 46 BC – AD 173



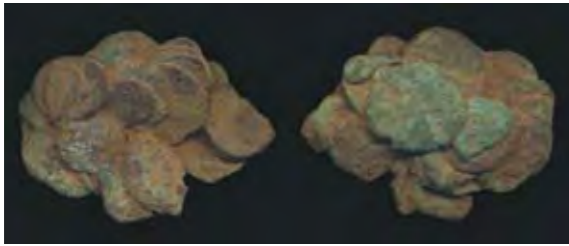
1089. Shellingford, Oxfordshire
3 silver radiates of Gordian III (AD 238–244)



1096. Burwash area, East Sussex
A selection of the 1,863 silver radiates and pottery sherds from the original find (c. AD 211–269)



1100. Childerley Gate, Cambridgeshire
A selection of the c. 4,487 barbarous radiates, c. AD 270s–280s



1108. Kings Somborne, Hampshire
A fused lump of 25+ barbarous radiates, c. AD 270s–280s



1110a. Braithwell, South Yorkshire
Copper alloy denarius of Gallienus, mint of Rome, AD 260–280 (Twice actual size)



1111a. Alton, Wiltshire
A bone counter found with the hoard



1111c. Alton, Wiltshire
Copper alloy radiate of Tetricus I, (AD 271–274)
CONCORDIA MILITVM (unpublished)



1111b. Alton, Wiltshire
3 silver radiates of Florian (AD 276)



1111d. Alton, Wiltshire
Copper alloy radiate of Tetricus I, (AD 271–274)
VICTORIA [?AVGG] (unpublished)



1130a. Guildford, Surrey
Silver miliarensis of Constantius II, AD 337–361, Constantinople (Twice actual size)



1130b. Guildford, Surrey
Silver miliarensis of Magnus Maximus, AD 383–388, Trier (Twice actual size)



1131a. Nailsworth, Gloucestershire
Silver siliqua of Julian (AD 360–3)
(*RIC* Lyon 218)



1131f. Nailsworth, Gloucestershire
Silver siliqua of Valentinian I (AD 364–375)
(*RIC* Rome 10a)



1131b. Nailsworth, Gloucestershire
Silver siliqua of Julian (AD 360–363)
(*RIC* Arles 309)



1131g. Nailsworth, Gloucestershire
Silver siliqua of Valens (AD 364–378)
(*RIC* Rome 10c)



1131c. Nailsworth, Gloucestershire
Silver siliqua of Julian (AD 360–363)
(*RIC* Arles 309)



1131h. Nailsworth, Gloucestershire
Silver siliqua of Valentinian II (AD 375–392)
(*RIC* Trier 43)



1131d. Nailsworth, Gloucestershire
Silver siliqua of Valeus (AD 364–378)
(*RIC* Trier 27e/45b)



1131i. Nailsworth, Gloucestershire
Silver siliqua of Valentinian II (AD 375–392)
(*RIC* Aquileia 27a)



1131e. Nailsworth, Gloucestershire
Silver siliqua of Valeus (AD 364–378)
(*RIC* Trier 27e/45b)



1141a. Hoxne, Suffolk
4 silver siliquae dating from c. AD 360 – c. AD 402



1141c. Hoxne, Suffolk (Actual size)
Fragment of gilt toilet implement



1155a1. Norwich, Norfolk
Gold-plated base metal
imitation of a Merovingian
gold tremissis



1155a2. Norwich, Norfolk



1155d1. Norwich, Norfolk
Silver sceatta (Series B)
c. 680–710



1155d2. Norwich, Norfolk



1155b1. Norwich, Norfolk
Silver sceatta (Series A)
c. 680–710



1155b2. Norwich, Norfolk



1155e1. Norwich, Norfolk
Silver sceatta (Series B)
c. 680–710



1155e2. Norwich, Norfolk



1155c1. Norwich, Norfolk
Silver sceatta (Series B)
c. 680–710



1155c2. Norwich, Norfolk



1156. Aiskew, North Yorkshire
Silver penny of Cynethryth (c. 757–96)



1158a. Penrith area, Cumbria
Silver penny of Plegmund,
Archbishop of Canterbury (890–914)



1158a. Penrith area, Cumbria
reverse



1158c. Penrith area, Cumbria
Silver penny of the St. Peter Coinage
(c. 921–7)



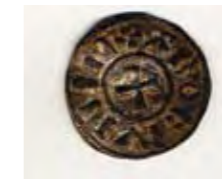
1158c. Penrith area, Cumbria
reverse



1158b. Penrith area, Cumbria
9 silver pennies of Edward the Elder (899–924)
obverse



1158d. Penrith area, Cumbria
Silver penny of the St. Edmund
Memorial Coinage (c. 885–915)



1158d. Penrith area, Cumbria
reverse



1158b. Penrith area, Cumbria
9 silver pennies of Edward the Elder (899–924)
reverse



1169a. Leiston area, Suffolk, obverse
6 silver pennies of Henry II, issued between 1158 and 1180



1169b. Leiston area, Suffolk, reverse



1176a. Huggate, East Riding of Yorkshire
Fused parcel of around 37 pennies, struck after 1279
(twice actual size)



1177. Rendham, Suffolk (Actual size)
7 silver pennies of Edward I, struck at London in the 1280s



1178. East Walton, Norfolk
2 Medieval silver cut halfpennies, ?13th century
(Twice actual size)



1183a. Oxted, Surrey
Silver penny of Edward I (1272–1307)
London (Class 10ct)



1183b. Oxted, Surrey
Silver penny of Edward II (1307–1327)
London (Class 13)



1183c. Oxted, Surrey
Silver penny of Edward I (1272–1307)
Canterbury (Class 4b)



1184. Dunton Bassett, Leicestershire
Over twenty fused silver pennies, struck after c. 1353



1191e. Skipton, North Yorkshire
Silver groat of Henry VI (1422–60), Calais (Annulet)



1191f. Skipton, North Yorkshire
Silver groat of Henry VI (1422–1460), Calais (Rosette Mascle)



1191g. Skipton, North Yorkshire
Silver groat of Henry VI (1422–1460), Calais (Rosette Mascle)



1196. Alby area, Norfolk
A gilded forgery of an Angel of Edward IV,
made c. 1470–85 (or later)



1191a. Skipton, North Yorkshire
Silver groat of Henry IV (1399–1413), London



1191b. Skipton, North Yorkshire
Silver penny of Henry V (1413–1422), York (Class C)



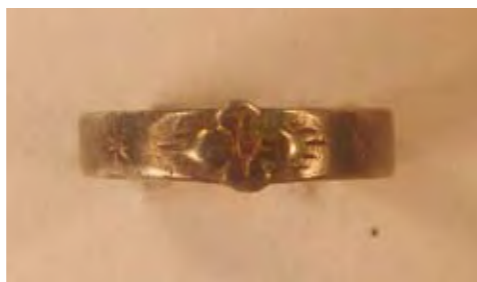
1191c. Skipton, North Yorkshire
Silver groat of Henry VI (1422–1460), London (Annulet)



1191d. Skipton, North Yorkshire
Silver groat of Henry VI (1422–1460), Calais (Annulet)



1200a. Brixton Deverill, Wiltshire
Silver groat of Henry VIII (1509–1547), Tower mint



1200f. Brixton Deverill, Wiltshire
Silver finger ring



1200b. Brixton Deverill, Wiltshire
Silver groat of Edward VI (1547–1553) in the name of
Henry VIII, Canterbury



1201. New Romney, Kent
A selection of silver coins of Henry VIII (1509–1547) and a coin of
Edward VI (1547–1553) struck in the name of Henry VIII



1200c. Brixton Deverill, Wiltshire
Silver groat of Edward VI (1547–1553), in the name of Henry VIII, York



1200d. Brixton Deverill, Wiltshire
Silver half-groat of Edward VI (1547–1553), in the
name of Henry VIII, Canterbury



1200e. Brixton Deverill, Wiltshire
Silver shilling of Edward VI (1547–1553), Canterbury, dated 1549



a.



b.



c.

1214. Tanworth-in-Arden, Warwickshire
Two shillings and a half-crown of Charles I (1625–1649)



1216a. Stocksbridge, South Yorkshire
A post-medieval forger's hoard, including a counterfeit shilling of Charles I



1218a. York area, York
Silver thaler of Johann George, elector of Saxony (1611–15), dated 1612



1218b. York area, York
Silver thaler of Archduke Leopold of Austria (1623–1632), dated 1634



1218c. York area, York
Silver thaler of Augsburg with portrait of Ferdinand III, dated 1643



1218d. York area, York
Silver thaler of Augsburg struck in the name of emperor Leopold I, dated 1694



1218e. York area, York
Silver thaler of Maximilian II Emmanuel, elector of Bavaria (1679–1726), dated 1694



1220. Nacton, Suffolk
Three shillings and three sixpences of William III (1694–1702)



1222. Llanmaes, Vale of Glamorgan



1223. Clancarfan, Vale of Glamorgan



1224. Boverton, Vale of Glamorgan (Half life-size)



1225. Maescar, Powys (Actual size)



1226. Gresford, Wrexham



1227. Goldcliff, Monmouthshire



1228. Llanbedr Duffryn Clwyd, Denbighshire



1229. Rhoose, Vale of Glamorgan



1230. Llantilio Pertholey, Monmouthshire



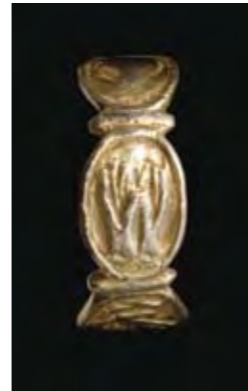
1231. St Brides Wentlooge A, Monmouthshire



1232.1. Llanover area, Monmouthshire



1232.2. Llanover area, Monmouthshire



1233 St Brides Wentlooge, Monmouthshire



1234. Llancarfan, Vale of Glamorgan



1235. Llantwit Major, Vale of Glamorgan



1236. Penllyn, Vale of Glamorgan



1238. St Donats, Vale of Glamorgan



1240. Portskewett, Monmouthshire



1241. Michaelstone-y-fedw, Newport



1242. Wenvoe, Vale of Glamorgan



1260. Moneygran, County Londonderry (Half life-size)

