



(fig. 301) Wearne, Somerset



(fig. 307) Long Marston, North Yorkshire



(fig. 302) Long Marston, North Yorkshire



(fig. 303) Great Bromley, Essex (Life-size)



(fig. 304) Claxby, Lincolnshire



(fig. 306) Branston and Mere, Lincolnshire



(fig. 309) Sholden, Kent



(fig. 310) Eye area, Suffolk



(fig. 312.1) Romaldkirk, County Durham

H. Undiagnostic



(fig. 312.2) Romaldkirk, County Durham



(fig. 317.1) Witham, Essex



(fig. 314) Amersham, Buckinghamshire (Life-size)



(fig. 317.2) Witham, Essex



(fig. 315) Eastbourne area



(fig. 320) Bletchingley, Surrey



(fig. 316) Swanley, Kent (Life-size)



(fig. 322) Salhouse, Norfolk

Undiagnostic



(fig. 323) Fordham, Cambridgeshire



(fig. 328) Lynsted, Kent



(fig. 324) Eynsford, Kent



(fig. 329) New Romney, Kent



(fig. 325) High Easter, Essex



(fig. 330) Freshwater, Isle of Wight



(fig. 326) Walton-on-the-Naze, Essex (Life-size)



(fig. 331) Freshwater, Isle of Wight



(fig. 332) Bradwell, Norfolk (Life-size)



(fig. 333) Heckingham, Norfolk



(fig. 339) Climping, West Sussex



(fig. 334) Blisworth, Northamptonshire



(fig. 340) East Dean, West Sussex



(fig. 335) Balderton, Nottinghamshire



(fig. 341) Alcester, Warwickshire



(fig. 337) East Clandon, Surrey



(fig. 342) Hedon, East Yorkshire



(fig. 338) Lewes area, West Sussex



(fig. 343) Kilham, East Yorkshire



(fig. 344) Walkington, East Yorkshire

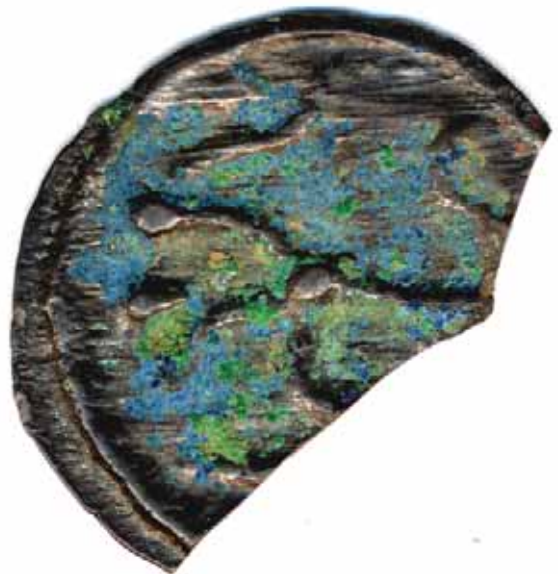


(fig. 345) Whixley, North Yorkshire

2. Coin Finds



(fig. 346.1) Thurnham, Kent (x4 Life-size)



(fig. 346.2) Thurnham, Kent (x4 Life-size)



(fig. 349) Henley-on-Thames, Oxfordshire



(fig. 373.2) Chalgrove II, Oxfordshire (Twice life-size)



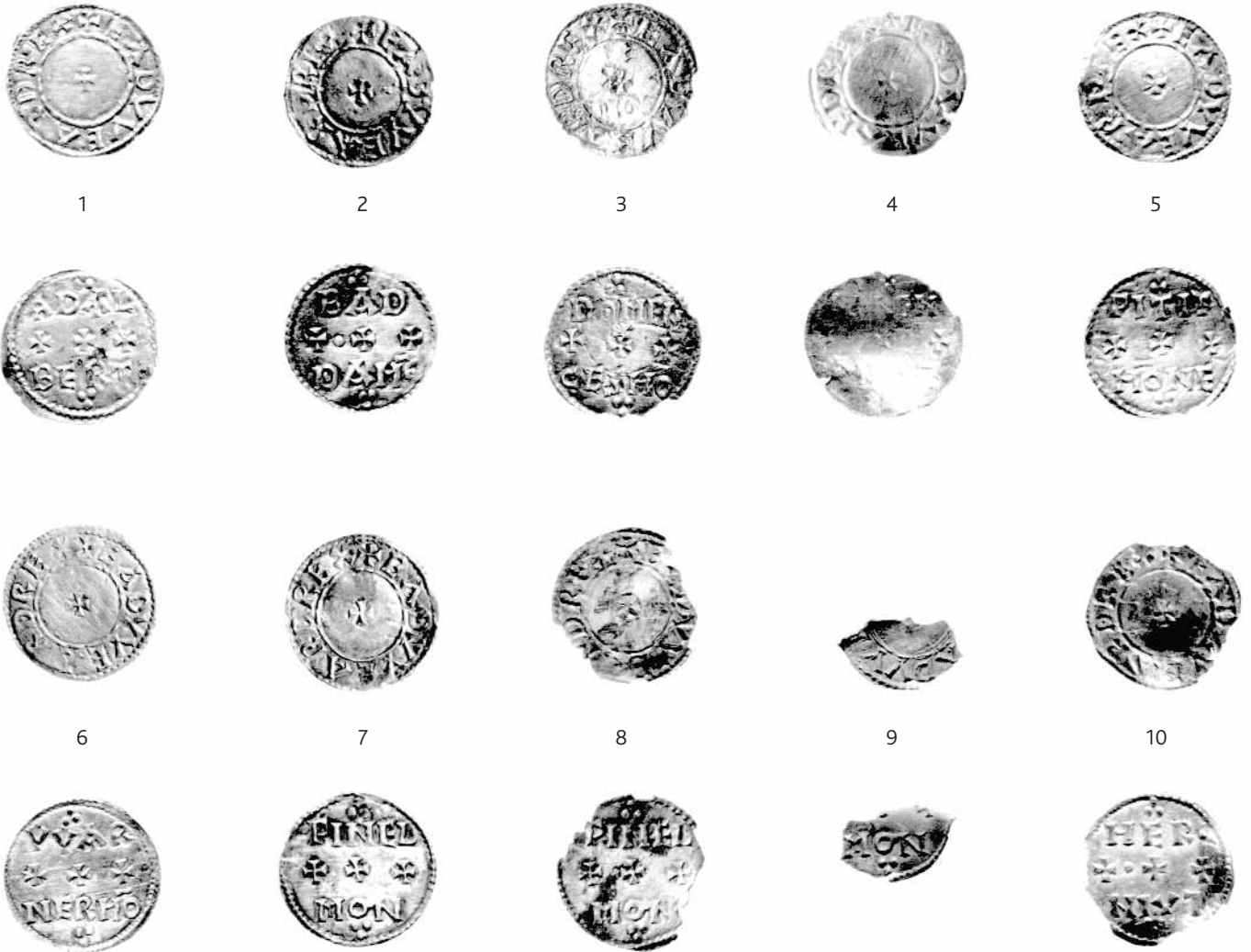
(fig. 389.1 and 389.2) Snodland, Kent (Twice life-size)



(fig. 369) Hockwold-cum-Wilton, Norfolk



(fig. 373.1) Chalgrove II, Oxfordshire



(fig. 390) Brantham, Suffolk (Life-size)



(fig. 401) Haverhill area, Suffolk (Twice life-size)

WALES – Artefacts

A. Prehistoric



(fig. 402) Banc Tynddol, Cwmystwyth, Ceredigion

B. Roman



(fig. 405) Shirenewton/Mathry, Monmouthshire

C. Early Medieval



(fig. 406) Llanbedrgoch, Isle of Anglesey

D. Medieval



(fig. 407) Kidwelly, Carmarthenshire



(fig.408) Llanfaes, Isle of Anglesey



(fig. 409) Llanfaes, Isle of Anglesey



(fig. 410) Llantarnam, Monmouthshire



(fig. 411) St Brides Major, The Vale of Glamorgan



(fig. 415) Llanharry, Rhondda Cynon Taff



(fig. 412) Colwinston, The Vale of Glamorgan



(figs. 416.1, 416.2) Llansteffan, Carmarthenshire



(fig. 413) Hope, Flintshire



(fig. 417) Penhow A, Monmouthshire



(fig. 414) Jordanston, Rosemarket, Pembrokeshire



(fig. 418) Penhow B, Monmouthshire

E. Post-medieval



(fig. 419) Llanfaes, Isle of Anglesey



(fig. 420) Old Beaupre, The Vale of Glamorgan



(fig. 421) Saundersfoot, Pembrokeshire



(fig. 422) Llanfaes, Isle of Anglesey



(fig. 423) Devauden, Monmouthshire



(fig. 424) Llanddewi, Gower, Swansea



(figs. 425.1, 425.2) Three Lords, Carmarthenshire

Distribution map of Treasure finds in 2003

