

## Illustrations

---



<b>ENGLAND</b>	<b>WALES</b>	251
<b>1. Artefacts</b>	<b>Map of Treasure finds</b>	254
A. Bronze Age		196
B. Iron Age		201
C. Roman		204
D. Early Medieval		210
E. Medieval		221
F. Post-medieval		233
G. 18th-20th centuries		242
H. Undiagnostic		245
<b>2. Coin Finds</b>		248

# 1. Artefact images

## A. Bronze Age



(fig. 1) Fontmell Magna, Dorset (Actual size)



(fig. 5) Crondall, Hampshire



(fig. 2) Flixton, North Yorkshire (Actual size)



(fig. 3) Bradford Peverell, Dorset



(fig. 6) Longparish, Hampshire



(fig. 4) Cublington, Buckinghamshire



(fig. 7) Ashford area, Kent



(fig. 9) Mildenhall area, Suffolk



(fig. 10) Thwing, East Yorkshire



(fig. 11) Aston, Cheshire



(fig. 12.1 and 12.2) Yarmouth, Isle of Wight (Half life-size)



(fig. 13) High Easter, Essex (Half life-size)



(figs. 14.1, 14.2 and 14.3) Mickleham, Surrey (Half life-size)



(fig. 15.1) Crundale, Kent



(fig. 15.3) Crundale, Kent (Half life-size)



(fig. 15.2) Crundale, Kent (Half life-size)



(fig. 15.4) Crundale, Kent (Half life-size)



(fig. 16.1, 16.2) Barley, Hertfordshire (Half life-size)



(fig. 17) Chislet, Kent (Half life-size)



(fig. 18) Hollingbourne, Kent (1) (Half life-size)



(fig. 19) Hollingbourne, Kent (2) (Half life-size)



(fig. 20.1) Hadleigh area, Suffolk (Life-size)



(fig. 20.2) Hadleigh area, Suffolk (Life-size)



(fig. 21.1, 21.2) Nuneaton, Warwickshire (Half life-size)



(fig. 21.3, 21.4) Nuneaton, Warwickshire (Half life-size)



(fig. 21.5) Nuneaton, Warwickshire (Half life-size)

## B. Iron Age



(fig. 23) Whitchurch, Hampshire (Twice life-size)



(fig. 24) Normanby le Wold, Lincolnshire (Twice life-size)



(fig. 25) South West Norfolk (Life-size)



(fig. 26) Doncaster area, South Yorkshire (Life-size)



(fig. 27.1) North West Norfolk (Half life-size)



(fig. 27.2) North West Norfolk (Half life-size)



(fig. 27.3) North West Norfolk (1) (Life-size)



(fig. 28.1) North West Norfolk (2)



(fig. 28.2) North West Norfolk (2)



(fig. 28.3) North West Norfolk (2)



(fig. 29) Horncastle area, Lincolnshire



(fig. 30) Southwark, London

## C. Roman



(fig. 31.1) Heckington area, Lincolnshire



(fig. 31.2) Heckington area, Lincolnshire



(fig. 32) Roxby cum Risby, North Lincolnshire



(fig. 33.1) Gisleham area, Suffolk



(fig. 33.2) Gisleham area, Suffolk



(fig. 34) Hockwold-cum Wilton, Norfolk



(fig. 35) Keswick, Norfolk



(fig. 36.1) Farndon, Cheshire



(fig. 36.2) Farndon, Cheshire



(fig.37.1) Heckington area, Lincolnshire



(fig. 39.2) Brough, Nottinghamshire



(fig. 37.2) Heckington area, Lincolnshire



(fig. 40) Winston, Suffolk



(fig. 38) Wickenby, Lincolnshire



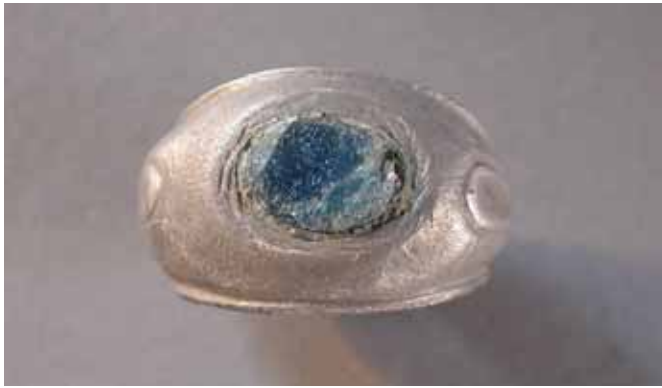
(fig. 41) Haxby, York



(fig. 39.1) Brough, Nottinghamshire



(fig. 42.1, 42.2) Caythorpe, Lincolnshire



(fig. 43.1) Good Easter, Essex



(fig. 43.2) Good Easter, Essex



(fig. 44.1) Little Laver, Essex



(fig. 44.2) Little Laver, Essex



(fig. 45.1) Wallington, Hertfordshire



(fig. 45.2) Wallington, Hertfordshire



(fig. 46.1) Fillingham, Lincolnshire



(fig. 46.2) Fillingham, Lincolnshire



(fig. 48.1) Towcester, Northamptonshire



(fig. 48.2) Towcester, Northamptonshire



(fig. 49.1) Brewham, Somerset



(fig. 49.2) Brewham, Somerset



(fig. 50) Linslade, Bedfordshire



(fig. 52.1) Binbrook, Lincolnshire



(fig. 52.2) Binbrook, Lincolnshire



(fig. 54) Chilham, Kent

Roman



(fig. 56) Binchester, County Durham



(fig. 57) Mettingham area, Suffolk



(fig. 58) Fulbourn, Cambridgeshire



(fig. 59) Worleston, Cheshire



(fig. 62) Towcester, Northamptonshire



(fig. 64) Wickenby, Lincolnshire



(fig. 65) Sudbury area, Suffolk



(fig. 67) Billingford, Norfolk (x 4 life-size)



(fig. 68) Winterborne Zelston, Dorset



(fig. 70) Hitcham, Suffolk

## D. Early Medieval



(fig. 71) Hollingbourne, Kent



(fig. 72.2) North of Ipswich, Suffolk



(fig. 72.1) North of Ipswich, Suffolk (Life-size)



(fig. 72.3) North of Ipswich, Suffolk



(fig. 72.4) North of Ipswich, Suffolk



(fig. 73) Eastry, Kent



(fig. 77) North Walsham, Norfolk



(fig. 74) Kilham, East Yorkshire



(fig. 78 obv.) Aldeburgh, Suffolk



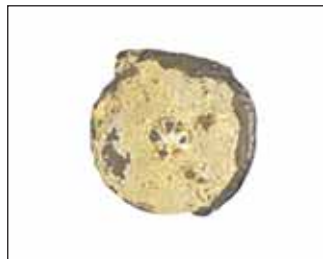
(fig. 75) Torksey/Brampton, Lincolnshire



(fig. 78 rev.) Aldeburgh, Suffolk



(fig. 76 obv.) Shotesham, Norfolk



(fig. 76 rev.) Shotesham, Norfolk



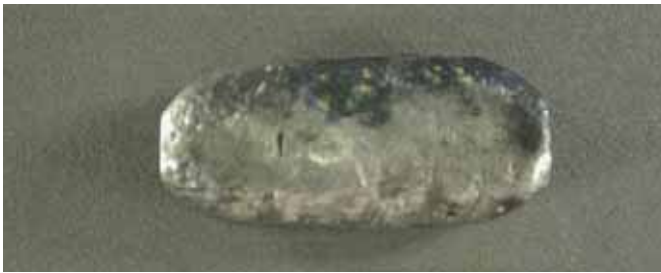
(fig. 79) Barton Bendish, Norfolk



(fig. 80) Sheldwich, Kent



(fig. 81) West Wrating



(fig. 82) Haslingfield, Cambridgeshire



(fig. 83) Aston, Cheshire



(fig. 84) Hindringham, Norfolk (Life-size)



(fig. 85) Grantham, Lincolnshire



(fig. 86.1) Burton Lazars, Leicestershire



(fig. 86.2) Burton Lazars, Leicestershire



(fig. 87.1) Covehithe, Suffolk