



(fig. 57) Whissonsett

Discussion: Hooked tags of this type with circular plates and projecting lugs are typical finds of the mid-to late Anglo-Saxon period and the ornament on this is a simplified version of the 10th-century Winchester style which typically has stylised foliage. The use of a cross motif is without parallel. This bold design using niello and a pecked texturing is typical of late Anglo-Saxon fine metalwork. Tags in silver and base metals were probably used in several ways, some of the larger and more robust hooks were on purses, while others were used on clothing, possibly garters and the lighter weights on veils.

Dimensions and metal content: Plate diameter: 17mm; weight: 1.5g. X-ray fluorescence analysis at the British Museum indicated an approximate silver content of 96 per cent.

Disposition: The British Museum had hoped to acquire but subsequently withdrew; returned to finder.

S M YOUNGS

58 Woodbridge area, Suffolk (3): Anglo-Saxon copper-alloy hooked tag (M&ME 413)

Date: 9th to 11th century

Finder: Mr R Damant

Date of discovery: April 2001

Circumstances of discovery: While searching with a metal-detector.

Description: Late Saxon hooked tag with circular plate with internal attachment holes. The plate is undecorated and the hook missing.

Dimensions and metal content: Diameter: 12mm. X-ray fluorescence analysis at the British Museum indicated that the metal was a copper, tin and lead alloy.

Disposition: Found not to be treasure; returned to finder.

S M YOUNGS

(v) Mounts (chronological order)

59 Kilham, East Yorkshire: Early Anglo-Saxon silver-gilt pyramidal strap-mount (2002 T16) (fig.59)

Date: Late 6th or early 7th century

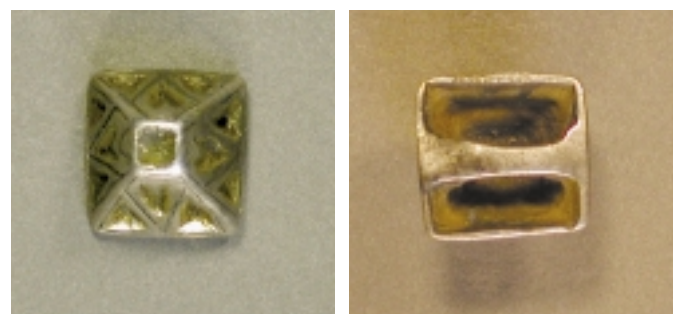
Finder: Mr Ian Bayles

Date of discovery: 1998/9

Circumstances of discovery: While searching with a metal-detector.

Description: Strap-mount, hollow with a square cell at the apex, now empty, and a bar across the open base. Each face is defined by a finely incised line and the field inside is divided into three by two incised lines, inlaid with niello. The triangles defined by these lines have recessed fields which are gilded. The blunt apex of the mount carries a square cell, which is empty. Similar pyramidal mounts are generally set with a small plate garnet.

Discussion: Pyramidal strap-mounts dating from the early Anglo-Saxon period fall into two groups distinguished from each other by their size and height. The taller and often more ornate versions functioned as part of a sword harness, perhaps tightening the



(fig. 59) Kilham

looped strap that held the scabbard to the sword belt. Their currency extends from the early seventh century into the eighth. The function of smaller, lighter mounts such as this example is not clear, but they may have secured straps attaching smaller implements, such as knives which were generally scabbarded, to a waist belt. Both types are well known in Continental and early Anglo-Saxon contexts. They differ however in that Anglo-Saxon examples are invariably made with a bar across the hollow back through which a strap can be threaded while Continental types can be either pierced vertically or made with an integral plate designed to be riveted to a strap.

The continental distribution of small pyramidal strap-mounts is concentrated along the Rhine and in the eastern Frankish territories between the Rhine and the Danube (W Menghin, *Das Schwert im Frühen Mittelalter*, Nürnberg 1983, 363–65, Karten 22 and 23), while in England they are found predominantly in southern and eastern England with a broadly East Anglian bias. A similar mount, in copper-alloy rather than silver, was found at Wenhaston, Suffolk, and pyramidal strap-mounts with pairs of triangular impressions on each face, are recorded from Narborough and Dalling in Norfolk and Pebmarsh in Essex (all unpublished). Recent finds, including this example from Kilham and a very similar example, also silver, from Alton, Wiltshire (no. 60 below) are broadening this distribution.

Dimensions: Base: 10 × 9mm; height: 9mm.

Disposition: Yorkshire Museum had intended to acquire but was unable to raise the money; returned to finder.

A C EVANS

60 Alton, Wiltshire: Anglo-Saxon silver-gilt pyramidal strap mount (M&ME 365)

Date: Early 7th Century

Finder: Mr John Philpotts

Date of discovery: 18 February 2001

Circumstances of discovery: While searching with a metal-detector.

Description: Silver-gilt strap-mount in the form of a truncated pyramid, the apex set with an unpolished garnet over waffle patterned gold foil. Each face is ornamented with a simple pattern of three interlocking pyramidal impressions, each outlined by a groove inlaid with niello. The small field between the apex of the upper impression and the inner corners of the lower impressions is filled with annular punch mark on two opposing faces and a shallow depression made by a rounded punch on the remaining faces. Traces of heavy gilding survive, particularly within the triangular fields. The mount is hollow with a flat bar running across the opening to secure a narrow leather strap.

Discussion: See discussion for no. 59 above.

Dimensions and metal content: Base: 12 × 12mm; height: 6mm; weight: 2.2g. X-ray fluorescence analysis at the British Museum indicated an approximate silver content of 87 per cent. The gemstone was identified as a garnet.

Disposition: Wiltshire Heritage Museum, Devizes.

A C EVANS

61 East Norfolk, Norfolk: Anglo-Saxon silver-gilt mount fragment (M&ME 455) (fig.61)

Date: 8th century

Finder: Mr J M Scanlon

Date of discovery: 1 October 2001

Circumstances of discovery: While searching with a metal-detector.

Description: Silver-gilt sub-rectangular fragment from a decorative mount of uncertain function; the fragment in its current state is laterally curved, but damage and distortion make it impossible to say whether this curvature reflects its original form to any degree. The fragment has been cast, then finished off by hand and gilded overall on the decorated surface. The back is undecorated, but shows some signs of working. It is broken off on both sides, and seems also to be so on the upper edge, which has a rough and uneven surface, unlike the lower edge, which is smooth and largely



(fig. 61) East Norfolk

undamaged. There are no attachment holes. The face shows that mount was originally decorated with at least two square panels containing zoomorphic decoration. One of these survives almost intact, and consists of a long-legged feline creature, the body in profile and the head turned to the front to gaze at the viewer. Below the muzzle is an abraded element which resembles an open mouth, but which is more probably part of the interlace enveloping the beast. The fur on the body, neck and haunch is represented by finely ribbed herringbone engraving, and the tail developed into an elaborate chip-carved interlace which crosses over the body to enmesh the legs and delicately clawed feet. This image is framed by plain borders at top and bottom, and by two upright borders with diagonal engraving. To the bottom left of the left border, a trace of a claw-like element suggests that the adjacent panel bore a similar image.

Discussion: The distinctive and elegant decoration of this fragment is characteristic of 8th-century Anglo-Saxon metalwork and sculpture, especially that centred on the kingdom of Mercia and its dependencies, where animals entrapped in fine interlace abound; the triple pin-set from the River Witham at Fiskerton, Lincolnshire, is a well-known example. The ribbed treatment of the fur is paralleled in other metalwork

and sculpture of the period – on the Gandersheim Casket, which was possibly made in the Peterborough area, and the Rothbury cross-shaft, for instance. The creature's frontal gaze is also a regular feature of this material, and can be seen, for instance on the Ormside bowl, the Larling, Norfolk, bone plaque and on some of the metalwork from the ecclesiastical site at Brandon, Suffolk; it is also a feature of some depictions of the symbol of St Luke, as in the Lichfield Gospels, for instance. It is possible that this cat-like creature represents a lion, maybe indeed, the symbol of St Mark, and that the missing panels contained the symbols of the other three evangelists; but this is perhaps to speculate too far. The function of the mount must remain uncertain, but the quality of the decoration would suggest that it was a fitting from a high-status, possibly ecclesiastical, object.

Dimensions and metal content: Maximum height: 25mm; maximum width: 21.5mm; weight: 5.69g. X-ray fluorescence analysis at the British Museum indicated an approximate silver content of 94 per cent.

Disposition: British Museum.

L WEBSTER

(vi) Pins (chronological order)

62 Welton le Wold, Lincolnshire: Anglo-Saxon silver and niello proto-hand pin (M&ME 452) (fig.62)

Date: 5th century

Finder: Mr M Jones

Date of discovery: February 2001

Circumstances of discovery: While searching with a metal-detector.

Description: Incomplete cast silver pin, the lower shank is missing. The head is offset on a short arm and carries a semicircular plate below an arc of three rounded beads linked on the front by narrower beaded bands. A neat ladder pattern is incised around the vertical edge of the front plate. The plate has on its main front surface a symmetrical pattern in low relief against a background inlay of degraded niello, with



(fig. 62) Welton le Wold

arcs forming a small central palmette and two outward spirals with lobed ends. The back of the arc of beads has pairs of incised lines running in radially from the top of each beaded collar.

Discussion: This is an example of a pin type dating from the 4th or 5th century, known as a ‘proto-hand pin’ because its offset ringed head it is ancestral to an early medieval pin type, the hand-pin (S M Youngs (ed.), *The Work of Angels. Masterpieces of Celtic Metalwork 6th–9th centuries AD* (London, 1989), pp. 23–27). The Welton le Wold pin is similar to the silver and enamel beaded ring-pin found with a hoard at Oldcroft, Gloucestershire and associated with base coins dating from before 359 (C M Johns, ‘A Roman silver pin from Oldcroft, Gloucestershire’, *Antiquaries Journal* 54, p. 295), but on the new find the ring of beads has begun to adopt a form closer to the later hand-pin series, having fewer and more prominent beads. The closest parallel is a pin excavated at Tripontium, a Roman posting station on Watling street near modern Rugby (J Lucas, ‘Tripontium, third interim report’, *Birmingham and Warwickshire Archaeological Society Transactions* 91 (1981), pp. 25–48). It is interesting that this pin type is so widely distributed in the early post-Roman world. The beads as seen on this pin are thought to have developed into the projecting tubes or ‘fingers’ of the early medieval ‘hand pins’ from Ireland and Scotland.

Dimensions and metal content: Length: 20.6mm; head width: 10.3mm; weight: 2.2g. X-ray fluorescence

analysis at the British Museum indicated an approximate silver content of 96 per cent.

Disposition: British Museum.

S M YOUNGS

63 Fridaythorpe, East Yorkshire: Anglo-Saxon silver pin fragment (M&ME 369)

Deposited: 8th or 9th century

Finder: Mr K Thompson

Date of discovery: February 2001

Circumstances of discovery: While searching with a metal-detector.

Description: Silver dress pin with a solid, spherical head cast with swirling lines and small collar where it joins the hank. The shank is incomplete. Judging from comparable finds in base metal excavated at Southampton, this is an Anglo-Saxon pin of 8th or 9th-century date (D A Hinton, *The Gold, Silver and other Non-Ferrous Alloy Objects from Hamwic* (Southampton, 1996), type Ab, fig. 7, pp. 18–19). The lower shank is missing, but it would probably have had the typical expanded ‘hipped’ form. Silver rivets with a similar ‘wrythen-decorated’ ornamental head were used on a runic scabbard mount recovered from the Thames and independently dated to the same period (D M Wilson, *Anglo-Saxon Ornamental Metalwork 700–1100* (London, 1964), no. 45, pp. 152–3, plate).

Dimensions and metal content Length: 24mm; weight: 11g. X-ray fluorescence analysis at the British Museum indicated an approximate silver content of 97 per cent.

Disposition: Hull City Museums and Art Gallery had intended to acquire but were unable to raise the money; returned to finder.

S M YOUNGS

(vii) Pendants



(fig. 64) St Nicholas at Wade

64 St Nicholas at Wade, Kent (2): Anglo-Saxon gold bracteate (M&ME 459) (fig.64)

Date: Second half of the 6th century

Finder: Mr A P Wainwright

Date of discovery: 19 August 2001

Circumstances of discovery: While searching with a metal-detector.

Description: Gold disc pendant, the suspension loop torn away, and with distortion to the right-hand edge. The bracteate is framed with twisted beaded wire, and the front is decorated with triple stranded beaded wire in a symmetrical pattern composed of two highly stylized interlacing animals. The surface of the filigree is very heavily worn. The back is plain, except for traces of scrolled decoration in single beaded wire at the top of the pendant, which must originally have framed the edges of the lost suspension loop.

Discussion: The pendant is an unusual type of bracteate, a mainly Scandinavian class of disc-shaped pendants which have their origins in local copies of late Roman coins and medallions. It belongs to the sub-class known as D-bracteates, characterised by interlacing animal ornament of a highly stylized kind. Copies were made elsewhere, including England, but this example seems likely to have been made in Scandinavia. The principal

decoration of most bracteates is die-impressed, but this example differs in that it is executed in beaded wire; the use of this particular technique, and of a symmetrical transitional Style 1/Style 2 animal ornament, is very close to some Scandinavian examples, such as that from Selvik, Rogaland, Norway (M B Mackeprang, *De Nordiske Guldbraekteater* (Aarhus, 1952), plate 18, 2), and to the ornament on Danish and Norwegian gold scabbard mouths (e.g., Mackeprang, plate 23, 20, and plate 28, 9 and 10). The vestiges of filigree decoration around the setting for the loop on the back also have their best parallels in Scandinavia. The parallels suggest that this piece should be dated to the second half of the 6th century.

These pendants were imported into England, especially Kent, during the late 5th and 6th centuries, and local versions were also made. They were normally worn on necklaces by high-ranking women, as symbols of status, and as amulets. Unlike the Scandinavian examples, which mostly come from hoards, examples found in England are usually from burials. The find-spot of this piece is entirely consistent with the main distribution focus of the D-bracteates.

Dimensions and metal content: Diameter: 22mm; weight: 3.9g. X-ray fluorescence analysis at the British Museum indicated an approximate gold content of 84 per cent.

Disposition: Maidstone Museum had hoped to acquire this find but subsequently withdrew; returned to finder.

L WEBSTER

65 Bidford-on-Avon, Warwickshire (3): Anglo-Saxon gold and garnet pendant (2001 T3) (fig.65)

Date: 7th century

Finder: Mr Robert Laight

Date of discovery: 5 August 2001

Circumstances of discovery: While searching with a metal-detector.

Description: Triangular gold pendant with a faceted



(fig. 65) Bidford-on-Avon

garnet inlay, the setting with a beaded border within simple margins. At the top, the scars and soldering points of a lost loop.

Discussion: The singleton Bidford-on-Avon pendant belongs to a growing family of necklace components, all made in similar style, that came into fashion in the 7th century. It can be compared, for example, to cabochon garnet pendants on the necklace from Desborough, Northamptonshire (L Webster and J Backhouse (eds.), *The Making of England* (London, 1991), p. 28, no.13). This necklace dates from the second half of the 7th century and is made up of a centrally placed equal armed cross, flanked by gold 'bullae' alternating with garnet droplets and separated by biconical gold beads. A stylistically similar pendant, but with a cornelian intaglio as a centrepiece, was found in the Canterbury hoard and is dated to the mid-7th century (Webster and Backhouse, op. cit., cat. no.5h). A third example, an irregular garnet cabochon, was found in grave 93, Boss Hall, Ipswich, Suffolk. This was the grave of a high status woman who was buried at the beginning of the 8th century with a garnet inlaid composite brooch, four sheet gold disc pendants, two cabochon pendants and a

coin pendant placed in a leather pouch at the neck (Webster and Backhouse, op. cit., cat. no. 33c). The Bidford pendant, which has a relatively high gold content, would date from earlier in the 7th century.

Dimensions: Length: 15mm.

Disposition: Warwickshire Museum.

A C EVANS

(viii) Ingots

66 Eccleston, Cheshire: Viking or Anglo-Scandinavian period silver ingot and bar, a stone spindle whorl and a modern stainless steel pellet (2002 T72) (fig.66)

Date: 9th or 10th centuries

Finder: Mr Robert Davies

Date of discovery: 2 September 2001

Circumstances of discovery: While searching with a metal-detector.

Description: The find comprises a silver ingot, a length of silver bar and a pellet of stainless steel, together with a pierced 'whorl' of black stone. The white metal pellet was shown to be modern stainless steel. The 'whorl' has an irregular form and is not closely dateable and not certainly associated with the ingot and bar.

The ingot consists of a short bar with rounded ends and a rounded trapezoidal section. The broad upper face is smooth and slightly convex, while the other faces are pitted, particularly at the ends, all indicating that the ingot was cast in a crude open mould made by scraping a small trough in earth or sand. This form of ingot, including the trapezoidal section, is typical of the Viking, or Anglo-Scandinavian, period in England. Its weight falls well within the general range of the type, although it does not fit conveniently into any of the weight standards postulated for this period. A local comparison can be drawn with three of the smaller ingots from the late Saxon hoard found in an earthenware pot at Castle Esplanade, Chester, in 1950, which was deposited



(fig. 66) Eccleston (actual size)

around AD 965 (G Webster, 'A Saxon treasure hoard found at Chester, 1950', *Antiquaries Journal* 33 (1953), pp. 22–32, pl. 9c, centre; M A S Blackburn, *Anglo-Saxon Monetary History* (Leicester, 1986), p. 296, no. 144).

The length of bar is curved and of slightly twisted, square section. It appears to have been broken off a longer bar by hacking and then bending at one end. Contemporary hoards in northern Europe, including the one from Chester, often contain cut fragments, known as 'hacksilver', which are usually derived from items of jewellery such as bracelets, brooches, or coins, cut up for use as bullion in payments or trade transactions. The irregular surface of the present piece suggests it could be from an unfinished bracelet like examples in the silver hoard from Cuerdale, Lancashire, deposited around 905 (E Hawkins, 'An account of coins and treasure found in Cuerdale', *Archaeological Journal* 4 (1847), pp. 111–130, figs. 48–50).

Discussion: Several recent finds of both ingots and ingot fragments of the Anglo-Scandinavian/late Saxon period have been reported as Treasure items, e.g. from Clive, Shrewsbury (two fragments), Temple Normanton, Derbyshire (ingot), the Horncastle area, Lincs. (small ingot), Llanbedrgoch, Anglesey (fragment), and Over Compton, Dorset (ingot) (*Treasure Annual Report 1998–99*, p. 48 no. 81; and p. 49 no. 83; *Treasure Annual Report 2000*, p. 49 no. 67; p. 35–6 no. 46, 3; and p. 49 no. 68). Many more have been found in hoards of similar date in Scandinavia, Ireland,

and the Netherlands, although there is quite a variety in size and even ingots cast from the same mould can differ in weight. The parallels noted above indicate that the ingot can probably be dated to the late 9th–10th century, which is mutually supported by its discovery together with a piece of hacksilver.

Dimensions and metal content: Ingot length: 45mm; width: 10mm; thickness: 7mm; weight: 21.3g. Bar length: 56mm; width: 5mm; weight: 10.5g. X-ray fluorescence analysis conducted at the British Museum indicated that the ingot and bar have an approximate silver content of 94 per cent. The white metal pellet was shown to be modern stainless steel.

Disposition: The Grosvenor Museum, Chester hopes to acquire.

B AGER



(fig. 67) Wickham Skeith

67 Wickham Skeith, Suffolk (1): Viking-period? silver ingot (2001 T26) (fig.67)

Date: Probably 9th to early 11th centuries

Finder: Mr D Payne

Date of discovery: 2000

Circumstances of discovery: While searching with a metal-detector.

Description: This ingot gently swells from rounded ends to a sub-rectangular cross-section. All faces have hammering marks, and one face has distinct transverse flutes.

Dimensions: Length: 46mm; maximum width: 6.5mm; weight: 10.35g.

Disposition: Disclaimed; returned to finder.

H GEAKE



(fig. 68) Sandhurst

68 Sandhurst, Gloucestershire: Viking period silver ingot (2001 T31) (fig.68)

Date: 9th to early 11th centuries

Finder: Mr J Carter

Date of discovery: August 2001

Circumstances of discovery: While searching with a metal-detector.

Description: Silver ingot, cast in an open mould, sub-rectangular in section; pitting and other indentations on three of the sides are typical of casting in an open stone mould, while the upper surface is smoother and more rounded.

Discussion: The size and general appearance of this ingot indicate that it is more likely to be an ingot of the Viking period, rather than from an earlier or later period. All its salient features – the size, shape, and casting technique – are consistent with such a context, and closely similar parallels can be found, for instance, in the Cuerdale, Lancashire, Viking hoard, dated to the beginning of the 10th century. The silver content is also consistent with a date in the early medieval period. The weight may just possibly represent an approximation to twice a known Viking weight unit of 26g; but this must remain speculation.

Dimensions and metal content: Length: 81.5mm; width: 11.5mm; weight: 54.9g. X-ray fluorescence analysis at the British Museum indicated an approximate silver content of 95 per cent.

Disposition: Gloucester City Museum.

(ix) Other objects

69 Beachamwell, Norfolk: Anglo-Saxon silver-gilt buckle loop fragment (M&ME 375) (fig.69)

Date: First half of 6th century

Finder: Mr Steven Brown

Date of discovery: 10 February 2001

Circumstances of discovery: While searching with a metal-detector.

Description: One third of a large and exceptionally heavy cast silver buckle loop, the original possibly made in three parts. The upper surface of the loop carries three well defined rectangular panels separated by a triangular field to compensate for the sharp curve



(fig. 69) Beachamwell

of the loop. Each panel contains a single Style I zoomorph within a beaded border. The zoomorphs consist of a simple head containing a beady eye, a truncated spine and a vestigial back foot. The decoration on the underside of the fragment is largely illegible but appears to consist of a continuous design of Style I zoomorphs within beaded borders. No panelling is visible.

Dimensions and metal content: Length: 32mm; weight: 27.7g. X-ray fluorescence analysis conducted at the British Museum indicated an approximate silver content of 99 per cent.

Disposition: Disclaimed; returned to finder.

A C EVANS



(fig. 70) Lissington

70 Lissington, Lincolnshire: Early Anglo-Saxon silver sword ring (2002 T29.a) (fig.70)

Date: Second half of 6th century

Finder: Mr Keith Kelway

Date of discovery: December 2001

Circumstances of discovery: While searching with a metal-detector.

Description: Silver sword ring with a darkened surface and faint traces of stamped decoration made with a poorly applied triangular punch around the edges. On the upper face, between the punched ornament and the inner edge of the 'ring' are traces of a second register of triangular punch. Incised 'thunder' signs along median, with some suggestion of inlay or perhaps migration of iron oxide from hilt or blade. The surface

of the ring is worn almost smooth, although there are few signs of wear on the inner edge of the ring where friction with the securing rivet would be expected.

Discussion: The function of sword rings is not fully understood, but they are found associated with pommels belonging to a group of mid-6th century Anglo-Saxon swords which have a predominantly Kentish distribution. These, together with a small number of Merovingian swords, are grouped as Menghin's Bifrons-Gilton type (W Menghin, *Das Schwert im Frühen Mittelalter* (1983), pp. 312–15). The ring swords are characterised by a pommel of high 'cocked-hat' form to which the loose ring is secured by a modified, and frequently decorated, rivet that attaches the pommel to the upper guard. The pommels and rings within this group are without exception made of silver. The Bifrons-Gilton group of swords from Anglo-Saxon England as classified by Menghin are all cemetery finds from Kent, however the Lissington find, together with the discovery of a ring-sword pommel from Congham in Norfolk (*Treasure Annual Report 1998–99*, no. 59) has extended this distribution into the territory of the early Anglo-Saxon kingdom of the East Angles.

Dimensions and metal content: Diameter: 17mm; weight: 7.77g. X-ray fluorescence analysis conducted at the British Museum indicated an approximate silver content of 94 per cent.

Disposition: City and County Museum, Lincoln, hopes to acquire this find.

A C EVANS

71 Oxborough, Norfolk: Early Anglo-Saxon silver-gilt zoomorphic fitting (M&ME 444)

Date: Second half of 6th century

Finder: Mr A Oliver

Date of discovery: August 2001

Circumstances of discovery: While searching with a metal-detector.

Description: Angular finial, flat in cross-section. It is decorated on both sides with an elongated transitional

Style I/Style II head springing from a triple banded neck, within a carefully defined border. The head is undecorated, with long jaws enclosing an equally long, thin tongue. The lower jaw curls downwards and backwards to meet the lower border of the mount. The upper edge of the finial is designed to be hidden and carries a registering knob. The underside is ornamented with a zig-zag motif made from opposed impressions of a triangular punch. The impressions contain niello. The original form of the complete mount or fitting and its function are unclear.

Dimensions: Length overall: 34mm.

Disposition: Disclaimed; returned to finder.

A C EVANS



(fig. 72) Kelvedon

72 Kelvedon, Essex: Early Anglo-Saxon gold buckle plate fragment with filigree ornament (2001 T17) (fig.72)

Date: Late 6th to early 7th centuries

Finder: Mr D Goodfellow

Date of discovery: 3 November 2001

Circumstances of discovery: While searching with a metal-detector.

Description: Fragment of an ornamental panel from the lower end of a small triangular buckle plate. The gold foil sheet is torn and slightly crumpled and carries the remains of interlacing elements, probably stylised zoomorphs, in fine beaded wire between beaded wire borders. The triple banded design of the

zoomorphs is executed typically using wire of two weights – a thicker central wire flanked on either side by thinner wire. The filigree wire is soldered to a thin gold sheet worked in repoussé with the underlying pattern.

Discussion: Triangular buckles come into use in the last quarter of the 6th century, following Continental fashion, and have a wide currency throughout the first half of the 7th century. They are made in a variety of materials, the finer in silver, silver-gilt or gold, and are frequently inlaid with panels of sheet gold, decorated with sinuous filigree wire zoomorphic ornament (George Speake, *Anglo-Saxon Animal Art and its Germanic Background* (Oxford 1980), plates 6–8).

Stylistically, this tiny fragment from Kelvedon can be best compared to the filigree decorated sheet in a silver-gilt buckle from Faversham (Speake, plate 6c). Similar triple-banded filigree is a feature of high status metalwork of the 7th century, including the gold sheet covering the copper-alloy cores of a pair of clasps from the 7th century burial at Taplow, Buckinghamshire (L Webster and J Backhouse (eds.), *The Making of England* (London, 1991), no. 38).

Dimensions and metal content: Length: 15mm; weight: 0.45g. X-ray fluorescence analysis at the British Museum indicated an approximate gold content of 68 per cent.

Disposition: Braintree Museum hopes to acquire this find.

A C EVANS

73 Coddensham, Suffolk (1): One gold Merovingian coin, three Anglo-Saxon silver coins and seventeen silver artefacts/fragments (M&ME 420)

Date: 7th century

Finder: Suffolk County Council Archaeological Service

Date of discovery: 1999

Circumstances of discovery: Controlled archaeological excavation of an inhumation cemetery.

Description: Part of an inhumation cemetery of 7th-century date was examined prior to quarrying of the site. Some 50 inhumations were excavated with the bulk of the grave-goods in general coming from a female bed burial and two male burials, the latter pair containing full weapon sets within small ring-ditches indicative of the former presence of barrows. The bed burial contained evidence for a high class necklace including a gold coin pendant of DAGOBERT I (Arles mint, 629–39 AD) and various silver rings and beads/lozenges plus an unmounted silver sceatta (series B, late 7th C). Another burial contained evidence for a small bag or purse containing two more series B sceattas and it is interesting to speculate that use of this coin type maybe linked to the presence of a cross on one side as most of the Coddtenham burials appear to post-date the conversion to Christianity of East Anglia in 630 AD. Similarly the DAGOBERT tremissis has a strong cross image on its reverse. Some of the other burials also contained silver rings with one a possible finger-ring while the remainder probably originated on necklaces.

Note: Thanks to Dr D M Metcalf for identifications of the coins.

Disposition: The landowner generously waived his reward and the find was disclaimed; to remain with the site archive at Ipswich Museum following publication by Suffolk County Council Archaeological Unit.

J NEWMAN

74 Rowington, Warwickshire: Anglo-Saxon gold filigree wire bead (2002 T95) (fig.74)

Date: 7th Century

Finder: Mr G Bragg

Date of discovery: 23 December 2001

Circumstances of discovery: While searching with a metal-detector.

Description: Worn biconical spacer bead from a necklace, made from a single coiled length of beaded wire, the ends tapering and left unbeaded.



(fig. 74) Rowington

Discussion: This singleton bead belongs to a growing family of necklace components, made in similar style, that came into fashion in the 7th century. It is best compared to the spacer beads on the necklace from Desborough, Northamptonshire (L Webster and J Backhouse (eds.), *The Making of England* (London, 1991), no.13), which dates from the second half of the 7th century. The Desborough necklace is strung with a small, centrally placed equal armed cross, flanked by gold 'bullae' alternating with garnet droplets. All the elements are separated by chubby biconical gold beads.

Dimensions and metal content: Length: 17mm; weight: 1.96g. X-ray fluorescence analysis at the British Museum indicated an approximate gold content of 68 per cent.

Disposition: Warwickshire Museum hopes to acquire this find.

A C EVANS

75 Alkborough, North Lincolnshire: Anglo-Saxon gold plaque fragment (2002 T110) (fig.75)

Date: Early to mid-7th century AD

Finder: Mr D Holden

Date of discovery: Before 24 September 1997

Circumstances of discovery: While searching with a metal-detector.

Description: The object consists of one end of a rectangular strip of filigree-decorated gold sheet. It has a border formed by a false herringbone plait of two plain, twisted wires in between two finely milled



(fig. 75) Alkborough

wires. The border encloses two lengthwise rows of back-to-back S-scrolls (only two scrolls on each side now surviving) separated by a single median wire, all finely milled. Fixed to a short gold shank soldered to the back of the sheet is a small, lozenge-shaped foil. The fragment is probably part of a plaque inserted into the front of a rectangular belt- or buckle-plate with a raised rim, such as the two examples from Gilton, Kent, which have gold plaques similarly decorated with filigree scrolls (including S-shapes) and would have formed part of matching sets of belt fittings (N Åberg, *The Anglo-Saxons in England during the Early Centuries after the Invasion* (Uppsala, 1926), figs. 230–31). More elaborate examples might have gold insets with animal interlace decoration in filigree, such as a buckle from a sword-belt, found in a male grave at Rijnsburg, Netherlands, dating to about 630/640, and possibly made in Kent (G Speake, *Anglo-Saxon Animal Art and its Germanic Background* (Oxford, 1980), pl. 9b; L Webster and M Brown (eds.), *The Transformation of the Roman World AD 400–900* (London, 1997), p. 190 no. 36, pl. 56; H A Heidinga, *Frisia in the First Millennium. An Outline* (Utrecht, 1997), fig. on p. 39).

Dimensions and metal content: Length: 11mm; width: 8mm; thickness: 0.8mm; weight: 0.6g. X-ray fluorescence analysis conducted at the British Museum indicated an approximate gold content of 70 per cent.

Disposition: Disclaimed; returned to finder.

B AGER

76 Llanbedrgoch, Isle of Anglesey (1): Gold filigree wire (NMGW 01.05)

Date: 7th–9th century

Finder: National Museums & Galleries of Wales excavation team.

Date of discovery: September 2001

Circumstances of discovery: Found during the wet sieving of deposits excavated from the early medieval spring within the Viking-period enclosure (context 1026; SF 2924).

Description: Small length of gold filigree wire, bent into a U-shape, of the type used to decorate jewellery dating to between the 7th and 9th centuries AD.

Dimensions: Length end to end: 15mm; weight: 0.05g.

Note: See also this report (no. 205) for a silver denier of Charles the Bald, Melle mint, about AD 848–77; also *Treasure Annual Report 1997–98*, no. 85; *Treasure Annual Report 1998–99*, nos. 85–87; *Treasure Annual Report 2000*, no. 46)

Disposition: National Museums & Galleries of Wales.

M REDKNAP

(d) Medieval Artefacts

(i) Brooches (chronological order)



(fig. 77) Fordham

77 Fordham, Cambridgeshire: Medieval silver brooch (2001 T27) (fig.77)

Date: 13th century

Finder: Mr S Smalley

Date of discovery: July 2001

Circumstances of discovery: While searching with a metal-detector.

Description: A miniature, annular brooch decorated with a crudely engraved criss-cross pattern. The brooch corresponds to a number of base-metal finds from datable contexts published in G Egan and F Pritchard, *Dress Accessories c.1150–c.1450* (London, 1991), pp. 250–251.

Dimensions: Diameter: 17mm.

Disposition: Ely Museum.

J P ROBINSON

78 Winchcombe, Gloucestershire: Medieval silver-gilt brooch (M&ME 415)

Date: 13th century

Finder: Mr Gilbert Stirling Lee

Date of discovery: 6 June 2001

Circumstances of discovery: While searching with a metal-detector.

Description: A silver-gilt brooch with two large bezels and four tubular collets which held the pin in place (the pin is now broken off). The settings are either empty, leaving a chalky deposit, or have remains of glass. Engraved between the settings is an inscription which is crude and difficult to decipher.

Dimensions: Diameter: 32mm; depth: 13mm.

Disposition: Disclaimed; returned to finder.

J PARSONS



(fig. 79) Long Stratton

79 Long Stratton, Norfolk: Medieval silver-gilt brooch (M&ME 457) (fig.79)

Date: 13th century

Finder: Mr M Harmer

Date of discovery: September 2001

Circumstances of discovery: While searching with a metal-detector.

Description: A silver-gilt annular brooch formed of a plain hoop. The pin is attached by a loop and tapered, with a decorative, foliate collar at the junction with the ring of the brooch.

Dimensions: Diameter: 18mm.

Disposition: Norwich Castle Museum hopes to acquire this find.

J P ROBINSON

80 Stody, Norfolk: Medieval silver brooch (2002 T76) (fig.80)

Date: 13th century

Finder: Mr J Hull

Date of discovery: Autumn 2001

Circumstances of discovery: While searching with a metal-detector.

Description: A silver annular brooch formed of a round sectioned hoop, fractured in one place and



(fig. 80) Stody

© Identification and Recording Service, Norfolk Landscape Archaeology

slightly distorted. The pin is incomplete and of similar section with a punched boss near the loop.

Dimensions: Diameter: 20–22mm; weight: 1.92g

Disposition: Disclaimed; returned to finder.

K HINDS AND J P ROBINSON



(fig. 81) Upperton

81 Upperton, Oxfordshire: Medieval silver brooch (2001 T42) (fig.81)

Date: 13th century

Finder: Mr A Irvine

Date of discovery: September 2001

Circumstances of discovery: While searching with a metal-detector.

Description: The brooch is miniature in type and is

decorated with a series of engraved chevrons which may once have been nielloed. Niello is a black inlay composed of sulphides of silver and copper which was used in the Middle Ages to distinguish incised decoration on silver and gold.

Dimensions: Diameter: 12mm.

Disposition: Oxfordshire Museums Service hopes to acquire this find.

J P ROBINSON



(fig. 82) Stowmarket area

82 Stowmarket area, Suffolk: Medieval silver-gilt brooch (2002 T49) (fig.82)

Date: 13th century

Finder: Mr R Watcham

Date of discovery: 16 September 2001

Circumstances of discovery: While searching with a metal-detector.

Description: A medieval, circular brooch the ring of which is formed of four crudely fashioned animal or dragon heads. Two of the animals grip with their mouths the loop for the pin attachment while the other two grip the grooved recess for the pin-rest in the same manner. The pin is lost. The bodies of the animals are conjoined by two centrally placed garnets.

Dimensions: Diameter: 15mm

Disposition: British Museum (Moyses' Hall Museum, Bury St Edmunds had hoped to acquire this find, but subsequently withdrew).

J P ROBINSON



(fig. 83) Wanborough

83 Wanborough, Wiltshire: Medieval silver-gilt brooch (2002 T8) (fig.83)

Date: 13th century

Finder: Mr D Alesbury

Date of discovery: 2 December 2001

Circumstances of discovery: While searching with a metal-detector.

Description: A circular brooch decorated with an incised chevron pattern which may once have been inlaid with niello. The pin rest is recessed to form a thin bridge, but the pin itself is now lost.

Dimensions: Diameter: 18mm.

Disposition: Swindon Museum and Art Gallery.

J P ROBINSON

84 Shimpling, Suffolk: Medieval silver-gilt brooch (M&ME 423) (fig.84)

Date: Second half of the 13th century

Finder: Ms Linda White

Date of discovery: April 2001

Circumstances of discovery: While searching with a metal-detector.

Description: A miniature silver-gilt brooch, circular and D-shaped in section. It has ten small bosses evenly set around the circumference, each stamped with a rosette made up of six pellets around a central pellet. Between two of the bosses is a pin constriction, but



(fig. 84) Shimpling

the pin is now missing. It belongs to a category of simply crafted, miniature brooches, the purpose of which remains unclear. They may have been used in conjunction with other brooches to pin fine, light-weight fabrics. The pin of this example is missing. Comparable 13th century finds of base-metal brooches have been published in G Egan and F Pritchard, *Dress Accessories c.1150–c.1450* (London, 1991), nos. 1325, 1326 and 1327, pp. 252–4.

Dimensions and metal content: Diameter: 13mm; weight: 0.5g. X-ray fluorescence analysis conducted at the British Museum indicated an approximate silver content of 96 per cent.

Disposition: Moyse's Hall Museum, Bury St Edmunds had hoped to acquire but subsequently withdrew; returned to finder.

H GEAKE AND J P ROBINSON

85 St Nicholas, The Vale of Glamorgan (1): Medieval silver brooch (NMGW 01.06) (fig.85)

Date: 13th or 14th centuries

Finder: Mr Gwyn Rees

Date of discovery: August 2001

Circumstances of discovery: While searching with a metal-detector.

Description: The silver annular frame is of square cross-section, which has been twisted to give a 'cable' appearance. A single line of close-spaced pellets runs along each face. There is a restriction to hold the pin which has a wrap-around head, and a transverse raised ridge at the junction of the pin-head and shaft.



(fig. 85) St Nicholas
© NMGW

Dimensions: External frame diameter: 19mm; overall pin length: 18mm; weight: 2.26g.

Note: A number of brooches of this general type are now known from Wales (for example, a copper-alloy brooch decorated with double beaded lines from Penhow, Monmouthshire: M Redknapp, 'Some medieval brooches, pendants and moulds from Wales: a short survey', *Archaeologia Cambrensis* 143 (1994), pp. 92–138, no. 16). A similar silver brooch with cable-twist and repeating pattern of two lines of dots on the frame was found at Winchester in a mid- to late 13th-century context (M Biddle and D A Hinton, 'Annular and Other Brooches', in M Biddle (ed.), *Object and Economy in Medieval Winchester*, Winchester Studies 7ii (1990), 639–643, no. 2022).

Disposition: National Museums & Galleries of Wales.

M REDKNAP

86 Coleraine, County Londonderry, Northern Ireland: Medieval gold brooch (fig.86)

Date: 13th or 14th centuries

Finder: Ms Anne Marie Denvir

Date of discovery: September 2001

Circumstances of discovery: Discovered in a pit during a licensed archaeological excavation at the above site.

Description: The brooch consists of a circular frame

on which four large collets of oval outline alternate with four brambled bosses. The four bosses support smaller collets of inverted conical form, and one boss can be seen to be hollow where a collet is lost. Triplets of leaves form diagonal struts which spring from either side of each boss to the adjacent oval collet. Two of the oval collets hold studs of sapphire, the third, in which white cement is visible, held a garnet stud (now detached). The stud from the fourth, also garnet, is represented in part by two large fragments. One of the smaller collets is set with a garnet, the other two with sapphires. Since the insets are matched in colour in alternate pairs the stud in the lost collet must have been a garnet. Attached by soldering at opposite points to the upper surface of the frame, and projecting into the interior, are the hinge for the pin (now lost) and the pin-stop.

Dimensions and metal content: 42.5mm × 41mm; weight: 14.8g. X-ray fluorescence analysis conducted at the British Museum indicated a gold content of



(fig. 86) Coleraine

© Crown Copyright, Environment & Heritage Service, Northern Ireland

approximately 64 per cent. The red gemstones, including the loose stones, were identified by Raman spectrometry as garnet, and the four blue stones as sapphire.

Disposition: Ulster Museum.

D P HURL



(fig. 87) West Acre

© Identification and Recording Service, Norfolk Landscape Archaeology

87 West Acre, Norfolk: Medieval silver-gilt brooch fragment (2001 T39) (fig.87)

Date: Late 13th or early 14th century

Finder: Mr S Brown

Date of discovery: November 2001

Circumstances of discovery: While searching with a metal-detector.

Description: A fragment from a medieval brooch consisting of two differently sized collets separated by foliate decoration. The smaller collet measures 4mm in height and the larger stands 9mm high. Both would originally have been set with gems which are now lost, although the white paste used to fix them survives. An elaborate, gold brooch of similar construction, which uses an alternating sequence of garnets and sapphires, survives in Manchester City Art Gallery (1977.168: see J Alexander and P Binski, *Age of Chivalry* (Royal Academy, 1987), cat. no. 651, p.485).

Dimensions: Length: 23mm.

Disposition: Norwich Castle Museum had hoped to acquire, but subsequently withdrew; returned to finder.

A ROGERSON AND J P ROBINSON

88 Great Finborough, Suffolk: Medieval silver brooch (2001 T25) (fig.88)

Date: Late 13th or early 14th century

Finder: Mrs J Wilding

Date of discovery: September 2001

Circumstances of discovery: While searching with a metal-detector.

Description: A silver-gilt annular brooch, distorted and decorated with four symmetrically placed globular projections. Each of these has circular punch-marks creating the impression of clusters. The collar of the pin is similarly decorated. For a comparable example see J D A Thompson, *Inventory of British Coin Hoards* (London, 1956), no.56, pl. VII.

Dimensions: 21mm × 25mm

Disposition: Moyse's Hall Museum, Bury St Edmunds wished to acquire but was unable to raise the money; returned to finder.

J P ROBINSON



(fig. 88) Great Finborough



(fig. 89) Meonstoke

89 Meonstoke, Hampshire: Medieval silver-gilt coin brooch (2001 T23) (fig.89)

Date: About 1300

Finder: Mr Ken Ross

Date of discovery: 8 October 2001

Circumstances of discovery: While searching with a metal-detector.

Description: A silver-gilt coin brooch made from a gros-tournois of Louis IX of France, minted between 1266 and 1270. There was a considerable vogue for coin jewellery in the second half of the 13th century. The adaptation of the coin into a piece of jewellery, whether it be a pendant or a brooch, is generally considered to occur relatively close to the date of minting. A date of around 1300 would seem sensible for this brooch.

Disposition: Disclaimed; returned to finder.

B COOK AND J P ROBINSON

90 Warwick, Warwickshire (2): Medieval gold brooch (M&ME 446) (fig.90)

Date: About 1300

Finder: Mr C Kibblewhite

Date of discovery: 2001

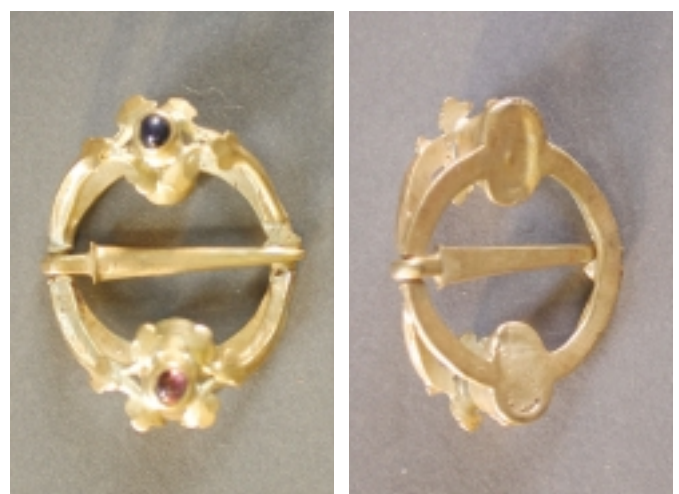
Circumstances of discovery: While searching with a metal-detector.

Description: A medieval brooch formed in a ring with two collets measuring about 9mm high; one is set with a garnet and the other with a sapphire. From these collets springs a foliate tendril which creates an openwork appearance, being attached to the main body of the brooch at the loop and point of the pin. Where the point of the pin meets the hoop of the brooch there is a small lozenge engraved with a cross.

Dimensions and metal content: 17mm × 21mm; weight: 3g. X-ray fluorescence analysis conducted at the British Museum indicated an approximate gold content of 70 per cent.

Disposition: Warwickshire Museum hopes to acquire this find.

J P ROBINSON



(fig. 90) Warwick

91 Corsley Heath, Wiltshire: Medieval silver brooch (M&ME 412)

Date: About 1300

Finder: Mr H Green

Date of discovery: 23 June 2001

Circumstances of discovery: While searching with a metal-detector.

Description: A medieval silver ring-brooch of a circular cross-section. The ring is plain but the pin, which tapers, is decorated with two lines, each consisting of four dots, just below the attachment loop and by a series of irregular, engraved lines about a third of the way down.

Dimensions and metal content: Diameter: 22mm; weight: 2.5g. X-ray fluorescence analysis conducted at the British Museum indicated an approximate silver content of 96 per cent.

Disposition: Salisbury and South Wiltshire Museum

J P ROBINSON



(fig. 92) Skipsea

92 Skipsea, East Yorkshire: Medieval gold brooch (2001 T15) (fig.92)

Date: 14th century

Finder: Mr Jack Cooper

Date of discovery: November 2001

Circumstances of discovery: While searching with a metal-detector.

Description: A gold brooch formed into the shape of an

asymmetric heart. Such brooches were used as love tokens during this period and some surviving examples carry inscriptions of amatory intent. This brooch lacks any inscription. A 14th century, asymmetric heart brooch, richly enamelled with flowers, can be found in the British Museum (Af 2701). For a simpler and closer comparison in silver, recently acquired by the British Museum, see *Treasure Annual Report 2000*, no.140 (Weeting-with-Broomhill, Norfolk).

Dimensions: Height: 23mm; width: 19mm.

Disposition: Hull City Museums and Art Galley hopes to acquire.

J P ROBINSON

93 Alne, North Yorkshire: Medieval silver-gilt brooch (M&ME 431)

Date: 14th century

Finder: Mr M Phelps

Date of discovery: 1 July 2001

Circumstances of discovery: While searching with a metal-detector.

Description: A silver-gilt, circular brooch with an inscription on both sides. On one side are the words IASPAR* MELCHIOR* BAVLTAZA (Jaspar, Melchior and Balthazar – the names of the three magi who travelled from the East to worship the infant Jesus). On the other side is the phrase * INMANVS* TVAS* DOMINE* AVR ('Into thy hand Lord'). The last three letters are divided by the pin of the brooch and their significance is unclear. In medieval times the names of the magi were invoked as protection against the falling sickness and were used as part of a longer charm against fever (see also no. 108, below).

Dimensions and metal content: Diameter: 30mm; weight: 8.6g. X-ray fluorescence analysis conducted at the British Museum indicated an approximate silver content of 85 per cent.

Disposition: Yorkshire Museum had intended to acquire, but subsequently withdrew its interest; returned to finder.

J P ROBINSON

94 Portesham, Dorset: Medieval silver-gilt brooch (M&ME 434)

Date: First half of 14th century

Finder: Mr C Walmsley

Date of discovery: July 2001

Circumstances of discovery: While searching with a metal-detector.

Description: A silver-gilt brooch of sexfoil form which is punctuated at equal intervals by six, small decorative lozenges incised with diamond shape motifs.

Metal content: X-ray fluorescence analysis conducted at the British Museum indicated an approximate silver content of more than 50 per cent.

Disposition: Dorset County Museum.

J P ROBINSON

95 Little Witchingham, Norfolk: Medieval silver brooch (2002 T37)

Date: 14th or 15th century

Finder: Ms Debbie Jones

Date of discovery: 9 August 2001

Circumstances of discovery: While searching with a metal-detector.

Description: A distorted, flat, circular silver brooch with an open centre. The pin is attached through an aperture in the body of the brooch.

Dimensions: Diameter: 30mm (approx).

Disposition: Disclaimed; returned to finder.

J P ROBINSON

(ii) Finger-rings (chronological order)

96 Wickmere, Norfolk: Medieval silver finger-ring (2002 T36) (fig.96)

Date: 11th or 12th century

Finder: Mr John Love

Date of discovery: 29 August 2001



(fig. 96) Wickmere

© Identification and Recording Service, Norfolk Landscape Archaeology

Circumstances of discovery: While searching with a metal-detector.

Description: A severely distorted silver finger-ring, the hoop formed of a tapering band of metal which is twisted three times to form a bezel. At the turn of each twist is a small, spherical knob.

Disposition: Disclaimed; returned to finder.

J P ROBINSON



(fig. 97) Stanningfield

97 Stanningfield, Suffolk (1): Medieval silver-gilt finger-ring fragment (2001 T29) (fig.97)

Date: 12th century

Finder: Ms S Atkinson

Date of discovery: July 2001

Circumstances of discovery: While searching with a metal-detector.

Description: A fragment of a finger-ring, the band grooved and punched with beaded decoration arranged

in columns of three and rows of six and placed between two circular bosses of 3mm in diameter. The bosses contain decorative motifs consisting of a five and seven armed device respectively. This decoration was originally heightened by the use of a black inlay (niello) to create a colour contrast. Some of the niello survives in the seven-armed device. This fragment, which would have formed part of a highly decorative ring with a sophisticated colour combination of gold, silver and black, may once have belonged to someone of high social status.

Dimensions: Length: 15.5mm; depth: 3.5mm; weight: 0.99g.

Disposition: Moyses's Hall Museum, Bury St Edmunds hoped to acquire but was unable to raise the money; returned to finder.

H GEAKE AND J P ROBINSON

98 Bradwell, Essex: Medieval gold finger-ring (2002 T3)

Date: 13th century

Finder: Mr M Weale

Date of discovery: 30 September 2001

Circumstances of discovery: While searching with a metal-detector.

Description: A damaged gold finger-ring of stirrup-shaped design, with a flattened strip-like hoop and a simple bezel originally set with a stone that is now missing. The hoop is broken and the ring is in generally poor condition.

Dimensions: Diameter: approximately 20mm; weight: 3.44g.

Disposition: Disclaimed; returned to finder.

P J WISE AND J P ROBINSON

99 Waltham on the Wolds, Leicestershire: Medieval gold finger-ring (M&ME 442)

Date: 13th century

Finder: Mr K Pritchett

Date of discovery: September 2001

Circumstances of discovery: While searching with a metal-detector.

Description: The hoop is triangular in section and is crudely engraved with letters. An iron stone is set into a fluted bezel which is supported by two animal heads. A small cross has been punched into the hoop at its narrowest point, opposite the bezel. The inscription occupies the two registers of the ring formed by its triangular section. It is not decipherable but may be amuletic in character. The setting of iron is very unusual and may also indicate that the ring was believed to have special, curative powers. A similar, 14th century, ring set with an opal and carrying a known amuletic inscription is in the British Museum collection (O M Dalton, *Catalogue of Finger-rings in the British Museum* (London, 1912), cat. no. 866).

Dimensions and metal content: Weight: 1.6g. X-ray fluorescence analysis conducted at the British Museum indicated an approximate gold content of 58 per cent with 33 per cent silver.

Disposition: Leicestershire Heritage Service.

J P ROBINSON



(fig. 100) Horncastle

100 Horncastle, Lincolnshire: Medieval gold finger-ring (M&ME 451) (fig.100)

Date: 13th century

Finder: Mr Martin Smith

Date of discovery: 17 June 2001

Circumstances of discovery: While searching with a metal-detector.

Description: Gold finger-ring set with an irregular blue stone (possibly a sapphire). The shoulders are decorated with an incised, cross-hatched triangle.

Dimensions: Diameter: 21mm; height: 9mm.

Disposition: Disclaimed; returned to finder.

M ELWES

101 Narborough, Norfolk: Medieval gold finger-ring (M&ME 390)

Date: 13th century

Finder: Mr A J Oliver

Date of discovery: February 2001

Circumstances of discovery: While searching with a metal-detector.

Description: A medieval gold finger-ring with a triangular bezel. The stone is missing. Two transverse lines decorate the base (very worn) with cast decoration of pairs of leaves on each side, running around the band to stop at the shoulders.

Dimensions: Diameter: 23mm; weight: 2.60g.

Disposition: Disclaimed; returned to finder.

STEVEN ASHLEY

102 Tadcaster, North Yorkshire: Medieval silver finger-ring (M&ME 380)

Date: 13th century

Finder: Mr A Harper

Date of discovery: 2 January 2001

Circumstances of discovery: While searching with a metal-detector.

Description: A silver finger-ring, crushed and distorted.

Dimensions: Unrecorded.

Disposition: Disclaimed; returned to finder.

C BARCLAY AND J P ROBINSON

103 Beeston, Cheshire: Medieval silver finger-ring (2002 T32)

Date: 14th to 16th centuries

Finder: Mr Nigel Townley

Date of discovery: 23 December 2001

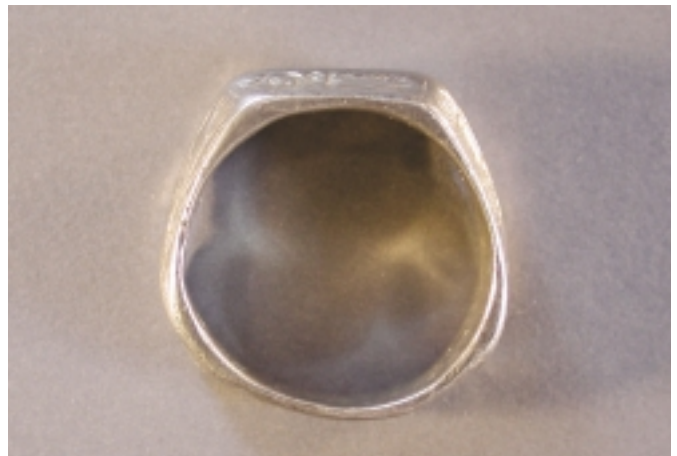
Circumstances of discovery: While searching with a metal-detector.

Description: A silver finger-ring formed of a flat, inscribed band which is split. The inscription is placed within a lightly incised border and is indecipherable but may once have served as a magical, protective charm. The size of the ring would suggest that it could have belonged to a child.

Dimensions: Diameter: 16mm; weight: 1.72g

Disposition: Disclaimed; returned to finder.

J P ROBINSON



(fig. 104) Alton

104 Alton, Hampshire: Medieval silver finger-ring (2002 T9) (fig.104)

Date: 15th century

Finder: Mr B Ham

Date of discovery: 6 October 2001

Circumstances of discovery: While searching with a metal-detector.

Description: An iconographic finger-ring with a bezel which has two facets each bearing the crudely engraved figure of a saint. Neither saint can be identified. The shoulders of the ring are cabled and incised with two bands of chevrons and rectangles which are alternately plain or grooved.

Dimensions: Diameter: 22mm.

Disposition: Hampshire Museums Service.

J P ROBINSON



(fig. 105) Fullerton

105 Fullerton, Hampshire: Medieval silver finger-ring (M&ME 440) (fig.105)

Date: 15th century

Finder: Mr M Crate

Date of discovery: 25 June 2001

Circumstances of discovery: While searching with a metal-detector.

Description: A silver finger-ring with a heart-shaped bezel sprouting flowers. The bezel is engraved with

IHC – the sacred monogram to denote the name of Jesus. The hoop is decorated with diagonal grooves.

Dimensions: Diameter: 21mm; height: 6mm.

Disposition: Disclaimed; returned to finder.

J P ROBINSON



(fig. 106) Blackburn area

106 Blackburn area, Lancashire: Medieval silver-gilt finger-ring (2002 T33) (fig.106)

Date: 15th century

Finder: Ms S Smith

Date of discovery: January 2001

Circumstances of discovery: While searching with a metal-detector.

Description: A medieval silver-gilt finger ring, the bezel formed of two joined hands and the hoop undulating to simulate sleeves decorated with sprigs of foliage. Incisions on the wrists may indicate that the hands are gloved. At the back of the ring is the popular motif of a heart sprouting flowers. There is a hair-line crack across the width of the left wrist. The gilding is partially preserved, particularly in the recesses of the engraved decoration.

Dimensions: Diameter: 22mm; weight: 4.84g

Disposition: Lancashire County Museum Service.

J P ROBINSON



(fig. 107) Glenfield

107 Glenfield, Leicestershire: Medieval gold finger-ring (2001 T33) (fig.107)

Date: 15th century

Finder: Mr B Biddles

Date of discovery: 15 November 2001

Circumstances of discovery: While searching with a metal-detector.

Description: A medieval finger-ring, much damaged and distorted. It belongs to a category of ring known as iconographic because of the incorporation of images of saints into their design, often combined with an inscription. In this instance, the bezel carries the engraved image of Saint Christopher bearing the Christ-child on his shoulder. Christ holds an orb mounted with a cross. In the later Middle Ages, St Christopher was believed to protect against sudden death. Inside the hoop of the ring is inscribed the motto: *de bon coer* ('of good heart'). The ring is highly ornamental. The back of the hoop is beaded and cabled and each of the shoulders is engraved with three flowers of two types (one five-petalled; the other a tulip?) in an alternating order. Rays of light are engraved above the two flowers in the top register where some white enamel survives.

Dimensions: 26mm × 16mm.

Disposition: Leicestershire Heritage Service hopes to acquire.

J P ROBINSON



(fig. 108) Stoke Trister

108 Stoke Trister, Somerset: Medieval silver finger-ring (M&ME 449)

Date: 15th century

Finder: Mr Derek Edward Bradfield

Date of discovery: October 1999

Circumstances of discovery: While searching with a metal-detector.

Description: The hoop of the ring carries the inscription: + I A S P A R + M E L C H I O R + B A L T H A Z A R

These names had a mythological association with the three magi in the Middle Ages and were used as a charm against falling sickness and fevers (see also no. 93, above).

Dimensions: Diameter: 23mm.

Disposition: Somerset County Museums Service.

J P ROBINSON



(fig. 109) Brailes

109 Brailes, Warwickshire: Medieval gold finger-ring (2001 T13) (fig.109)

Date: 15th century

Finder: Mr A Gardner

Date of discovery: October 2001

Circumstances of discovery: While searching with a metal-detector.

Description: A gold finger-ring of distorted shape. It is of a category of ring characterised by depictions of saints and known as iconographic. In this instance, the figure crudely engraved on the bezel represents the Virgin and Child. Such rings were produced in relatively large numbers in gold, silver and base metal. The image of the saint is frequently accompanied by an inscription, often placed on the inside of the hoop. This example carries an isolated letter on one shoulder and a possible monogram on its other. It has not been possible to decipher the significance of these letters which may relate to the original owner or refer to the Virgin Mary.

Dimensions: Diameter: 21mm.

Disposition: Warwickshire Museum. The finder generously waived his share of the reward.

J P ROBINSON

110 Marton, Cheshire: Medieval gold finger-ring (2001 T24) (fig.110)

Date: Late 15th to early 16th century

Finder: Mr D Bailey

Date of discovery: 14 October 2001

Circumstances of discovery: While searching with a metal-detector.

Description: A gold finger-ring with a double, bun-shaped bezel constructed to contain two stones. One stone is missing and the other is likely to be a diamond. The shoulders of the ring are decorated with engraved flowers. The hoop is severely distorted.

Dimensions: Length: 20mm; width: 12mm; weight: 4.45g.

Disposition: Disclaimed; returned to finder.

J P ROBINSON



(fig. 110) Marton

111 Orford, Suffolk: Silver-gilt finger-ring (M&ME 373)

Date: Late 15th to early 16th century

Finder: Mr A G Calver

Date of discovery: 20 April 2001

Circumstances of discovery: While searching with a metal-detector.

Description: Large gilded silver finger-ring with worn relief decoration. The ring is D-shaped in section and has no bezel; the exterior face has broad diagonal grooves flanked by narrow grooves, which divide the ring into panels. Alternate panels are slightly wider and slightly narrower; the slightly wider ones are filled with seven longitudinal rows of small punched circles, and the slightly narrower ones have a single diagonal band of stamped squares with a V-shaped nick out of the centre of each side, giving the effect of X shapes.

Dimensions: Internal diameter: 20mm; hoop width: 5.5mm.

Disposition: Disclaimed; returned to finder.

J NEWMAN

(iii) Mounts



(fig. 112) Stanstead

112 Stanstead, Suffolk: Medieval silver-gilt mount (2001 T28) (fig.112)

Date: About 1300–50**Finder:** Mrs J McLeish**Date of discovery:** September 2001**Circumstances of discovery:** While searching with a metal-detector.**Description:** A circular mount engraved with the image of a winged dragon, facing left with its horned head bent back and looking down over its left shoulder. On the reverse, three projections suggest how the mount might have been secured by clips to the item it originally decorated which could have been a leather strap or a box.**Dimensions:** Diameter: 12mm.**Disposition:** Moyses's Hall Museum, Bury St Edmunds hoped to acquire but was unable to raise the money; returned to the finder.

H GEAKE AND J P ROBINSON

113 Wiveton, Norfolk: Medieval silver belt-mount (2002 T35)

Date: 14th or 15th century**Finder:** Mr E Middleton**Date of discovery:** 30 August 2001**Circumstances of discovery:** While searching with a metal-detector.**Description:** A silver, sexfoil belt-mount in the shape of a flower. The hole at its centre is designed to take a rivet by which means it was fixed to a leather strap. Similar base-metal finds are recorded in G Egan and F Pritchard, *Dress Accessories c.1150–c.1450* (London, 1991), pp.186–9.**Dimensions:** Diameter: approximately 10mm.**Disposition:** Disclaimed; returned to finder.

K HINDS AND J P ROBINSON

114 Colkirk, Norfolk (1): Medieval silver mount (2002 T141) (fig.114)

Date: 15th century**Finder:** Mr N Abram**Date of discovery:** Late 2001**Circumstances of discovery:** While searching with a metal-detector.**Description:** A fragment of a circular, silver mount which curls over slightly at its damaged edge. About half of the object remains revealing part of a three letter inscription set against a cross-hatched ground. The letters are likely to be the IHC of the sacred monogram which denotes the name of Jesus.**Dimensions:** Diameter: approximately 21mm.**Disposition:** Disclaimed; returned to finder.

S ASHLEY AND J P ROBINSON



(fig. 114) Colkirk

© Identification and Recording Service, Norfolk Landscape Archaeology

(iv) Badges

(fig. 115) Stanningfield

115 Stanningfield, Suffolk (2): Medieval silver-gilt pilgrim badge (2002 T109) (fig.115)**Date:** 15th century**Finder:** Ms S Atkinson**Date of discovery:** December 2001**Circumstances of discovery:** While searching with a metal-detector.

Description: A medieval pilgrim badge representing St Nicholas. St Nicholas was venerated at shrines at Bari in Italy and at St Nicolas-de-Port in France, both of which attracted a multitude of pilgrims in the Middle Ages. He is shown here in his bishop's robes, within a crescent. To his right are represented the three young boys who were the subject of his most famous miracle. According to legend, St Nicholas resuscitated (and re-assembled) three young boys who had been dismembered and immersed in a vat of brine by a ruthless butcher at the time of a severe famine. The young boys were very frequently quoted in images of St Nicholas. On the reverse is a stitching loop which forms the method of attachment. The head of Saint Nicholas and his right hand, which was undoubtedly raised in benediction, are lost.

Dimensions: 14mm × 15mm.**Disposition:** The British Museum hopes to acquire.

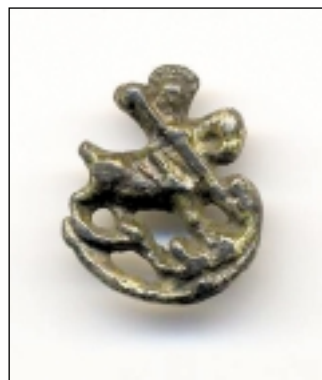
J P ROBINSON

116 Briston, Norfolk: Medieval silver-gilt pilgrim badge (2001 T40) (fig.116)**Date:** 15th or early 16th century**Finder:** Mr P Dawson**Date of discovery:** December 2001**Circumstances of discovery:** While searching with a metal-detector.

Description: A medieval pilgrim badge representing St George on horseback slaying the dragon beneath him. The body of the dragon curls under the horse's hooves to form a semi-circular base. There is a vertical scar on the reverse where the pin or loop has broken off. The cult of Saint George in England during the Middle Ages focussed on Saint George's chapel in Windsor, where the relic of Saint George's heart was held. Pilgrim souvenirs were generally made close to the pilgrimage centre which they commemorated. Most frequently cast from lead-alloy and mass-produced, towards the end of the Middle Ages a greater number of examples appear in copper-alloy and silver.

Dimensions: Height: 16mm; width: 13mm; weight: 1.58g.**Disposition:** Norwich Castle Museum hopes to acquire.

S ASHLEY AND J P ROBINSON



(fig. 116) Briston

© Identification and Recording Service, Norfolk Landscape Archaeology

(v) Seal matrix

117 Ramsey, Cambridgeshire: Medieval copper-alloy seal-matrix (M&ME 407)**Date:** 15th century**Finder:** Mr T R Collins**Date of discovery:** 15 February 2001**Circumstances of discovery:** While searching with a metal-detector.**Description:** A pointed oval (or vesica) shaped seal-matrix engraved with a cross, a bishop's mitre, a sword and a key. Below is engraved the figure of a praying cleric. The legend is very badly abraded and difficult to read. It begins S' OFFICII (or OFFICIALITIS) which might signify an official position connected to an ecclesiastical institution. The symbols of St Paul (sword) and St Peter (key) might refer to the dedication of a church, cathedral or abbey.**Disposition:** Not eligible to be considered treasure because of lack of precious metal content; returned to finder.

J P ROBINSON

(vi) Pendant

118 Old Romney, Kent: Medieval silver pendant fragment (M&ME 443)**Date:** 13th century**Finder:** Mr N Allen**Date of discovery:** 11 September 2001**Circumstances of discovery:** While searching with a metal-detector.**Description:** Part of a silver pendant inscribed on the front with AG and on the reverse with LA to spell AGLA. These letters are formed from a Latinised version of a Hebrew phrase, Atha Gebri Leilan Adonai, meaning 'Thou art mighty forever, O Lord'. During the Middle Ages these words were considered to be a powerful charm against fever. The pendant has three

surviving protruding lugs (originally there would have been four) which formed the arms of a cross with the inscribed circular disc at its centre.

Disposition: Disclaimed; returned to finder.

M LEWIS AND J P ROBINSON

(vii) Other objects



(fig. 119) North Ormsby

119 North Ormsby, Lincolnshire: Medieval silver, gold and niello finial (2002 T86) (fig.119)**Date:** 12th century**Finder:** Mr G Taylor**Date of discovery:** 24 November 2001**Circumstances of discovery:** While searching with a metal-detector.**Description:** A medieval, cube-shaped finial with slightly rounded facets, four of which are decorated with circles inlaid with gold and carrying a four point design drawn in niello. Within the spandrel formed by the meeting of each of these circles is placed another, smaller circle in relief. This decoration might indicate the 'top' of the finial. The top facet has gold inlay but without any niello, whilst the bottom has no decoration, merely evidence of a break where it has been wrenched from the object to which it was originally attached.**Dimensions and metal content:** Weight: 10.2g. X-ray fluorescence analysis conducted at the British Museum indicated an approximate silver content of 96 per cent.**Disposition:** Disclaimed; returned to finder.

J P ROBINSON