



Plate I

A full suit of armour c.1495



Plate II

One of a pair of George IV ormolu and mother of pearl inlaid black and gilt-japanned papier-mâché vases, c.1830, the vases by Jennens and Bettridge, the mounts attributed to Edward Holmes Baldock



Plate III
A stone cross-shaft

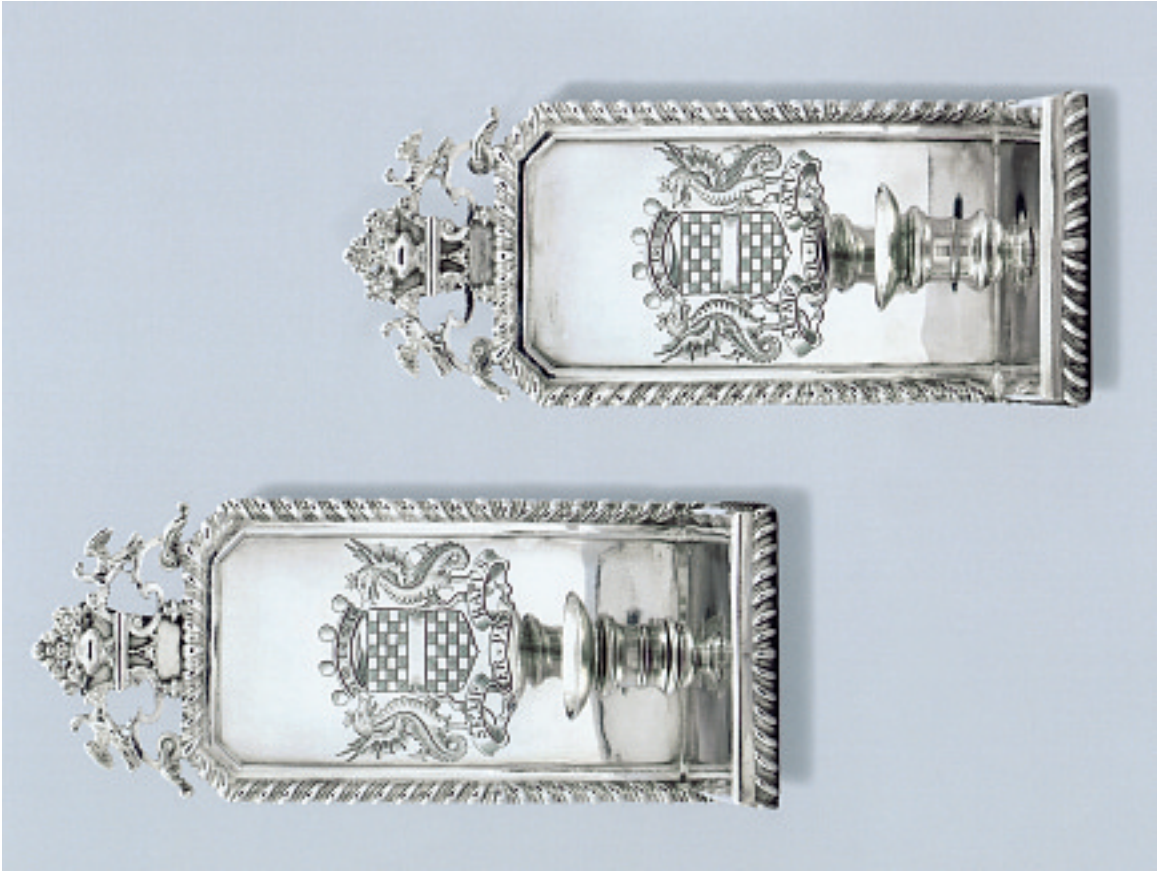


Plate V

A pair of silver wall sconces with the mark of Thomas Corbett, 1701

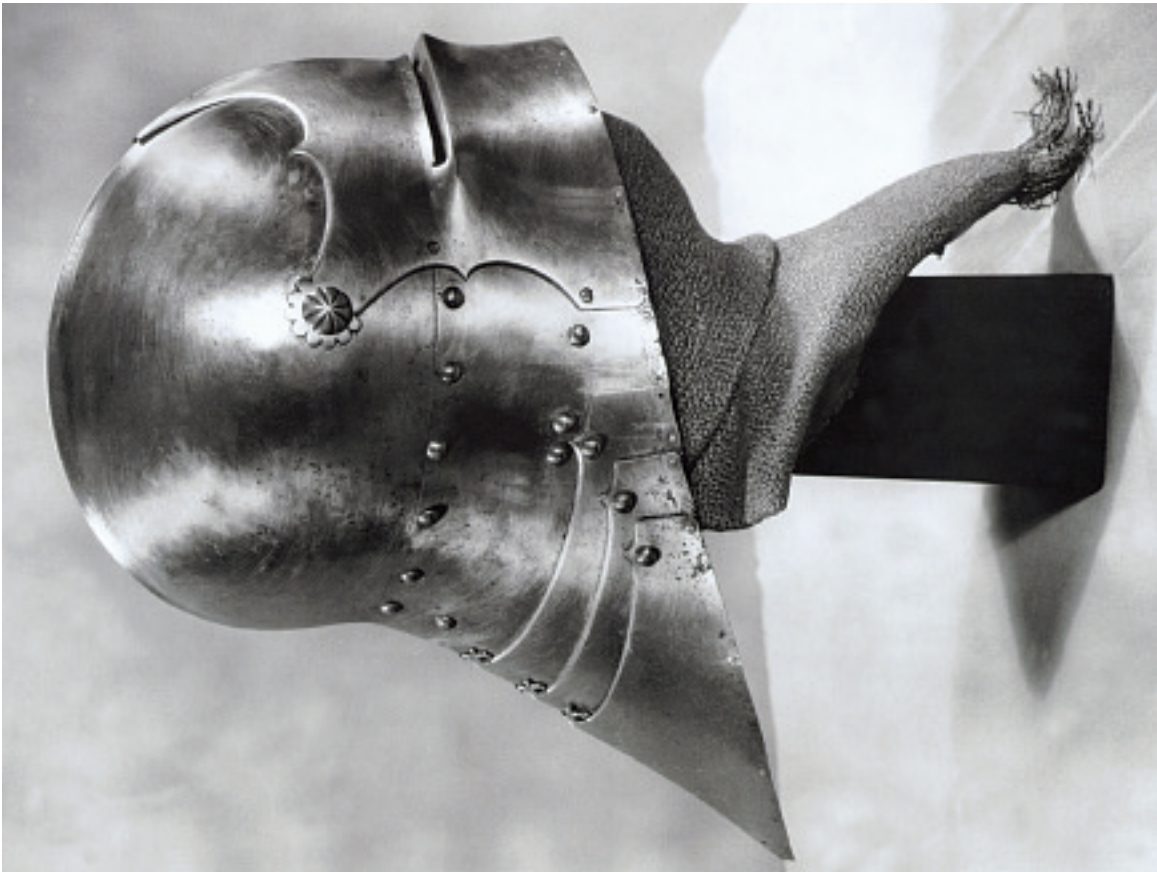


Plate IV

A sallet by Lorenz Helmschmied, c.1480