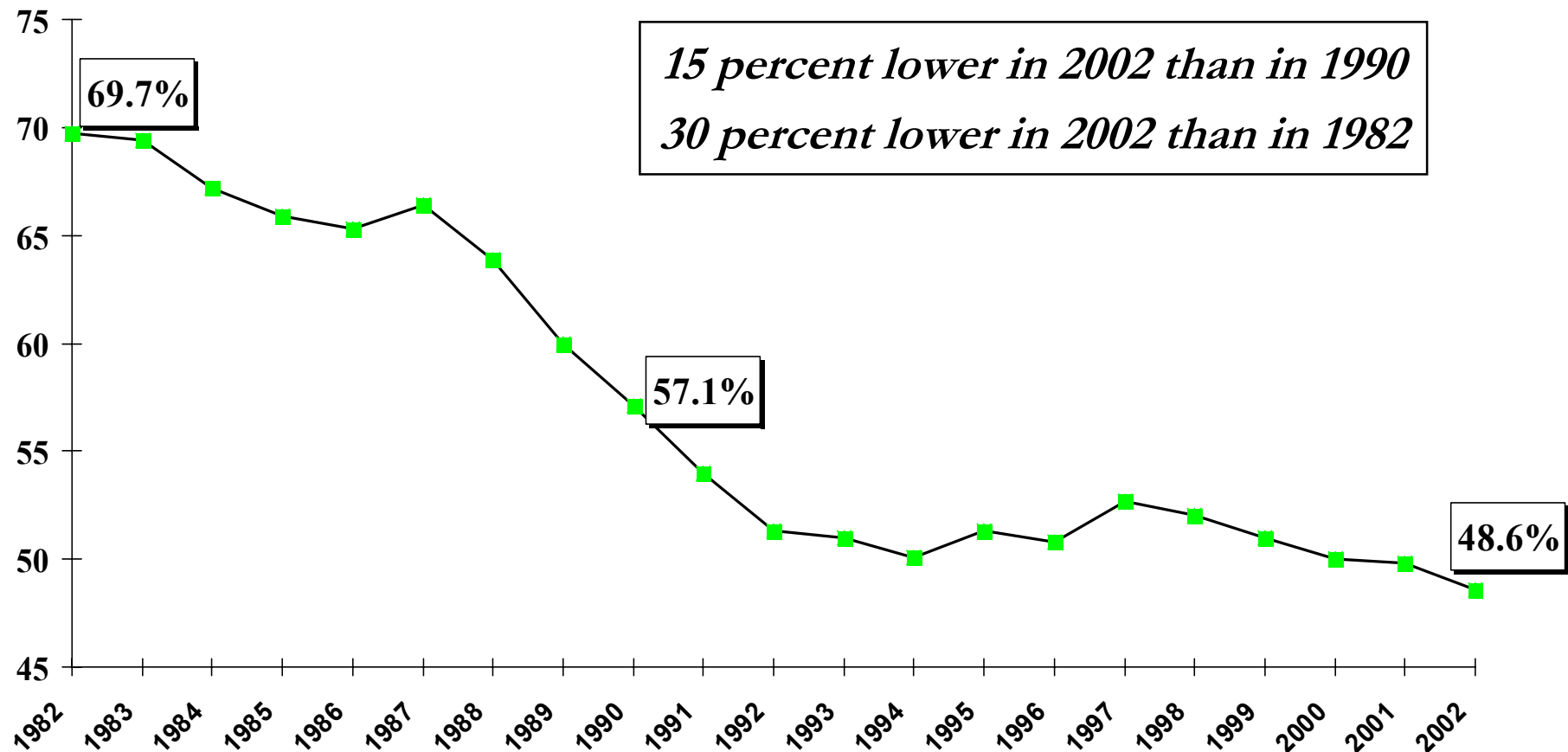


Exhibit D Drinking Among High School Seniors

Percent Who Have Consumed Alcohol in the Last Month

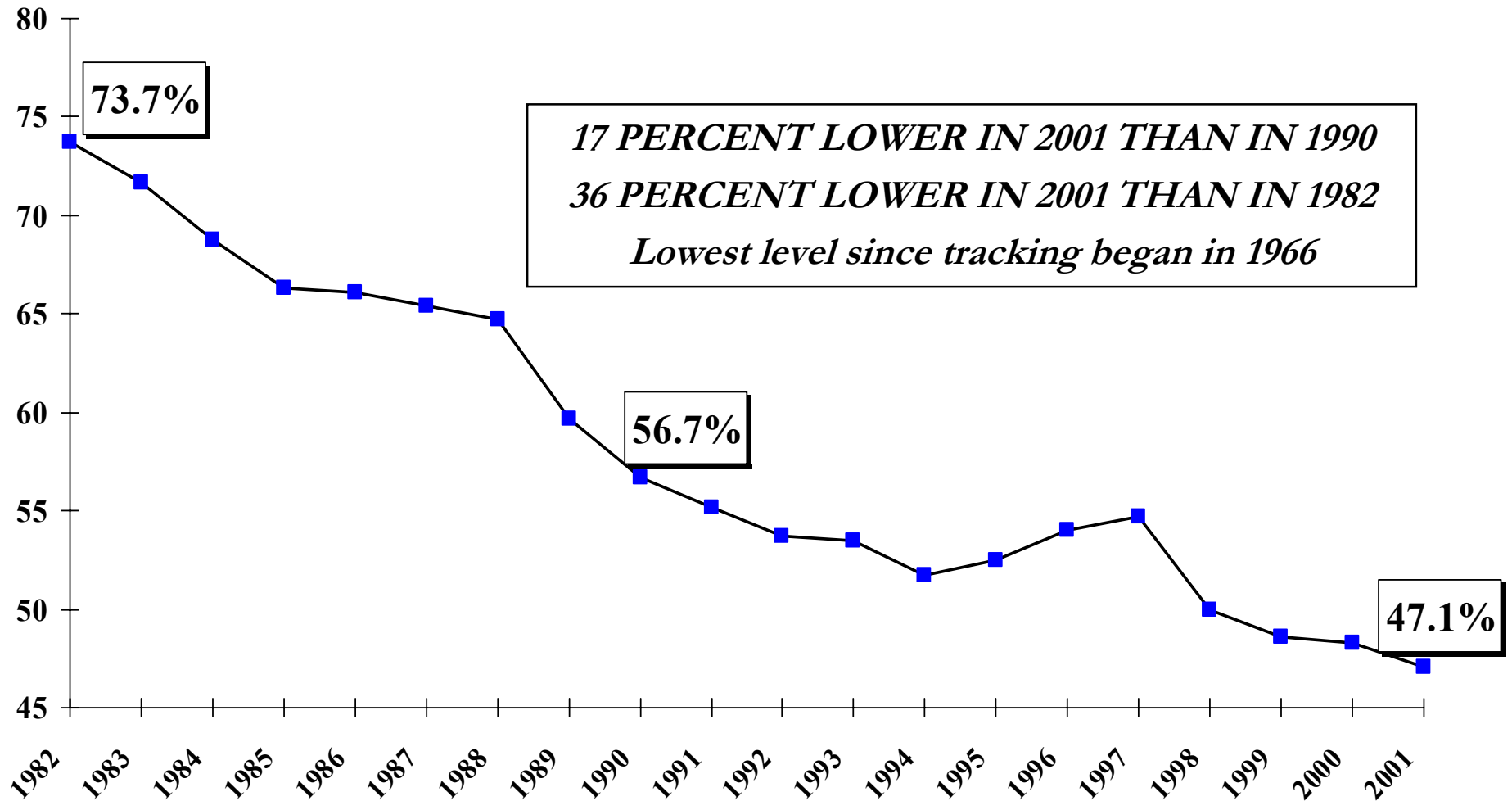


Source: The University of Michigan *Monitoring the Future* Study, sponsored by the National Institute on Drug Abuse, U.S. Department of Health & Human Services. The survey includes a total sample size of approximately 43,700 8th, 10th and 12th graders in 394 public and private secondary schools across the United States and is nationally representative of students in each of the three grade levels—including approximately 13,500 seniors.

Note: Data beginning 1994 reflect answers to a slightly altered question, i.e., a “drink” means “more than just a few sips.”

Revised 12/17/02

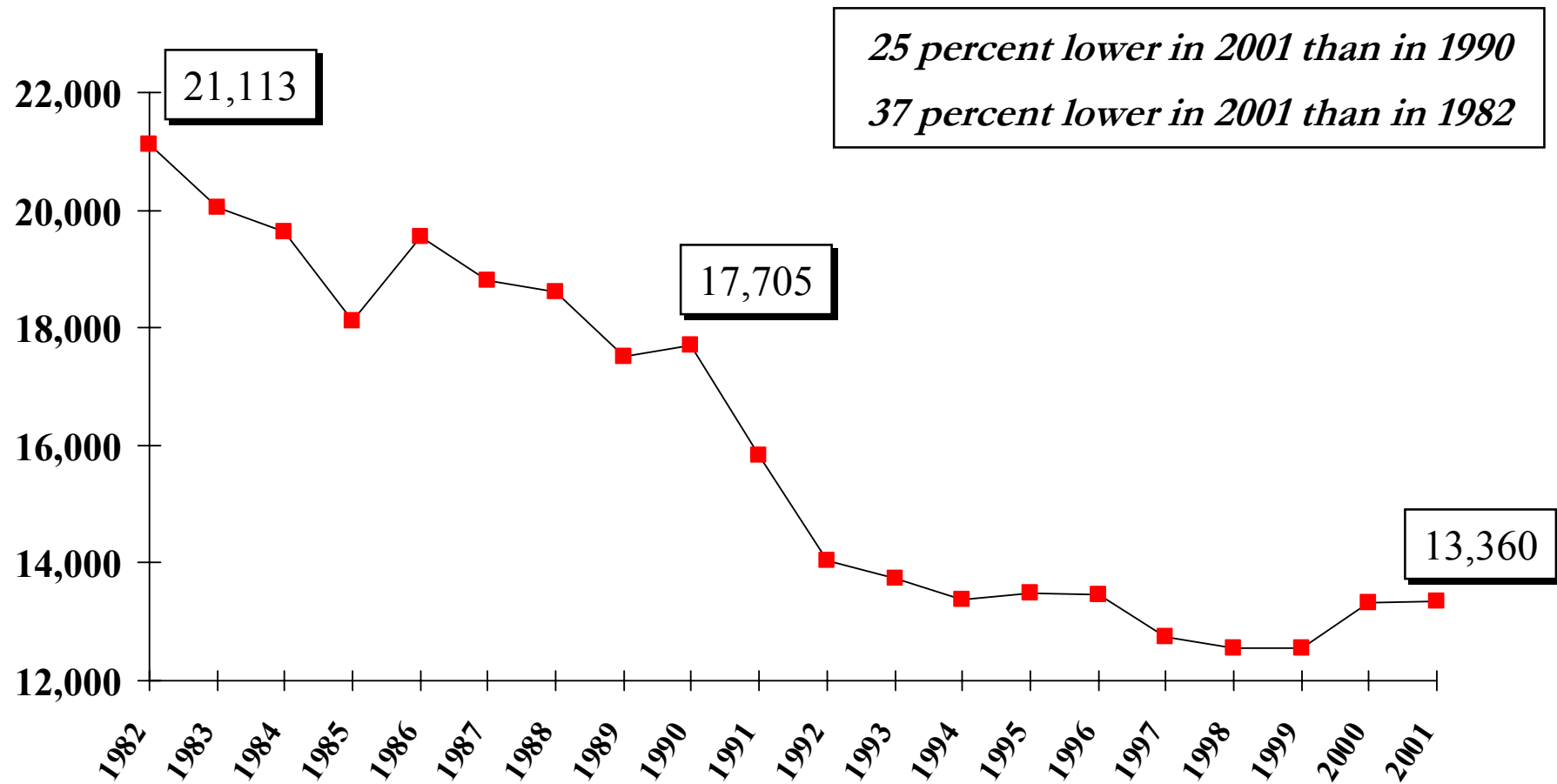
Exhibit E Percentage of College Freshmen Who Drink Beer Frequently or Occasionally



Source: The American Freshman Survey, sponsored by UCLA and the American Council on Education and conducted by the Higher Education Research Institute at UCLA's Graduate School of Education & Information Studies, is the nation's largest and longest empirical study of higher education, with a sample of more than 1,500 institutions and more than 10 million students since its inception in 1966. Now in its 36th year, the UCLA Survey is the nation's longest-standing and most comprehensive assessment of student attitudes and plans. The fall 2001 survey sample included 411,970 students at 704 of the nation's higher education institutions, and is representative of the 1.2 million freshmen entering four-year colleges and universities as first-time, full-time students in the fall of 2001. "Frequently or occasionally" is self-reported as drinking beer one or more times in the past year.

Exhibit B

Total Fatalities in Drunk-Driving Crashes *Driver BAC of .08 and higher*

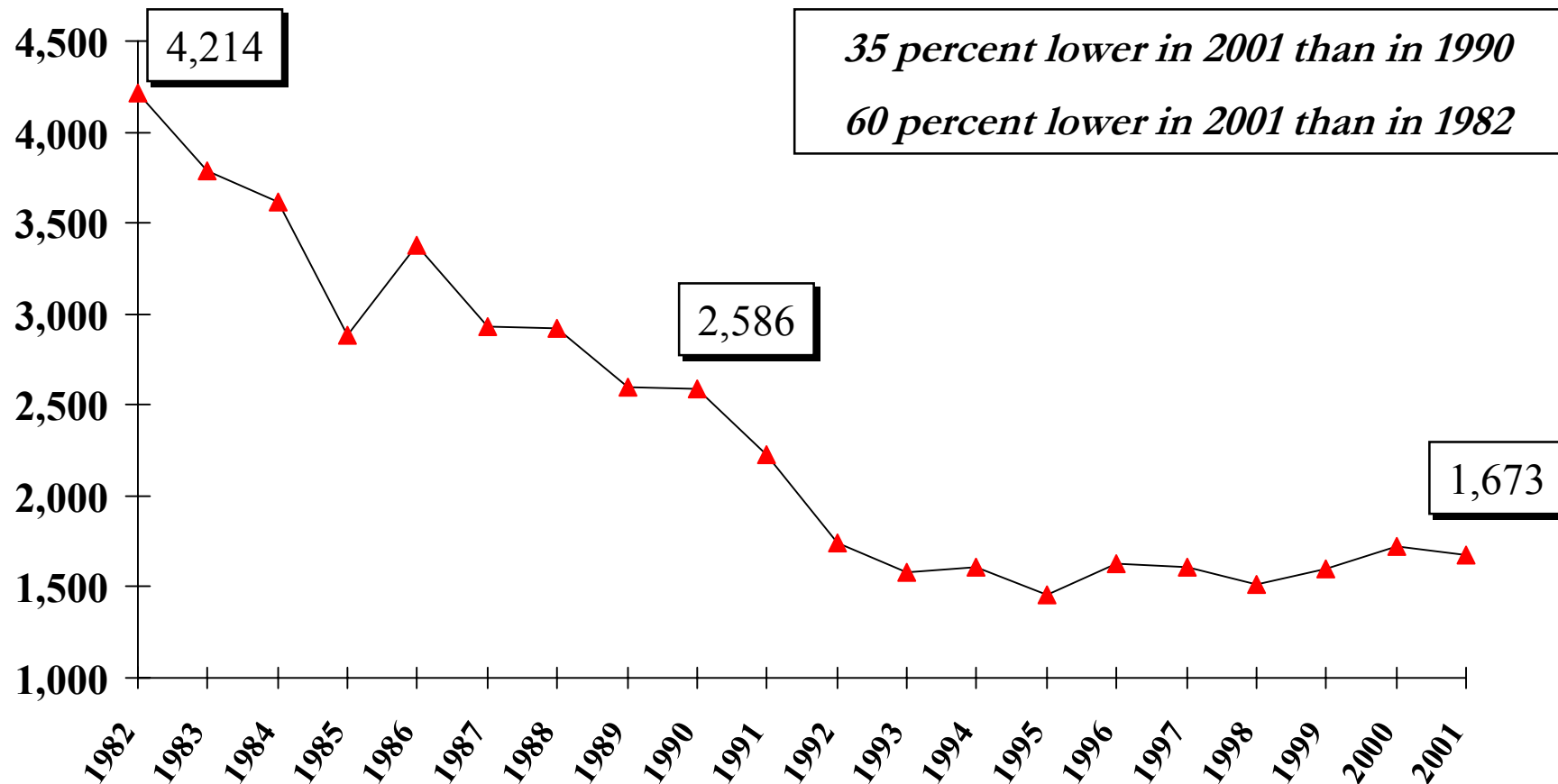


Source: National Highway Traffic Safety Administration, U.S. Department of Transportation, 2002. Drunk-driving fatalities represent the total number of people (occupants and nonoccupants) killed in crashes in which at least one driver had a BAC of .08 or higher.

Note: These data reflect NHTSA's new methodology in estimating missing BAC test result data. The old method computed the chance of involvement along definite categories (0, 0.01 to 0.09, and 0.10+) of BAC while the new method, multiple imputation, imputes actual values of BAC (0 to 0.94). NHTSA's new methodology improves the scope of alcohol involvement statistics generated by the Fatality Analysis Reporting System (FARS).

Exhibit C

Total Fatalities in Teen Drunk-Driving Crashes *Driver BAC of .08 and higher*



Source: National Highway Traffic Safety Administration, U.S. Department of Transportation, 2002. Teen drunk-driving crashes represent the total number of people (occupants and nonoccupants) killed in crashes in which at least one teenage (16-20) driver had a BAC of .08 or higher.

Note: These data reflect NHTSA's new methodology in estimating missing BAC test result data. The old method computed the chance of involvement along definite categories (0, 0.01 to 0.09, and 0.10+) of BAC while the new method, multiple imputation, imputes actual values of BAC (0 to 0.94). NHTSA's new methodology improves the scope of alcohol involvement statistics generated by the Fatality Analysis Reporting System (FARS).