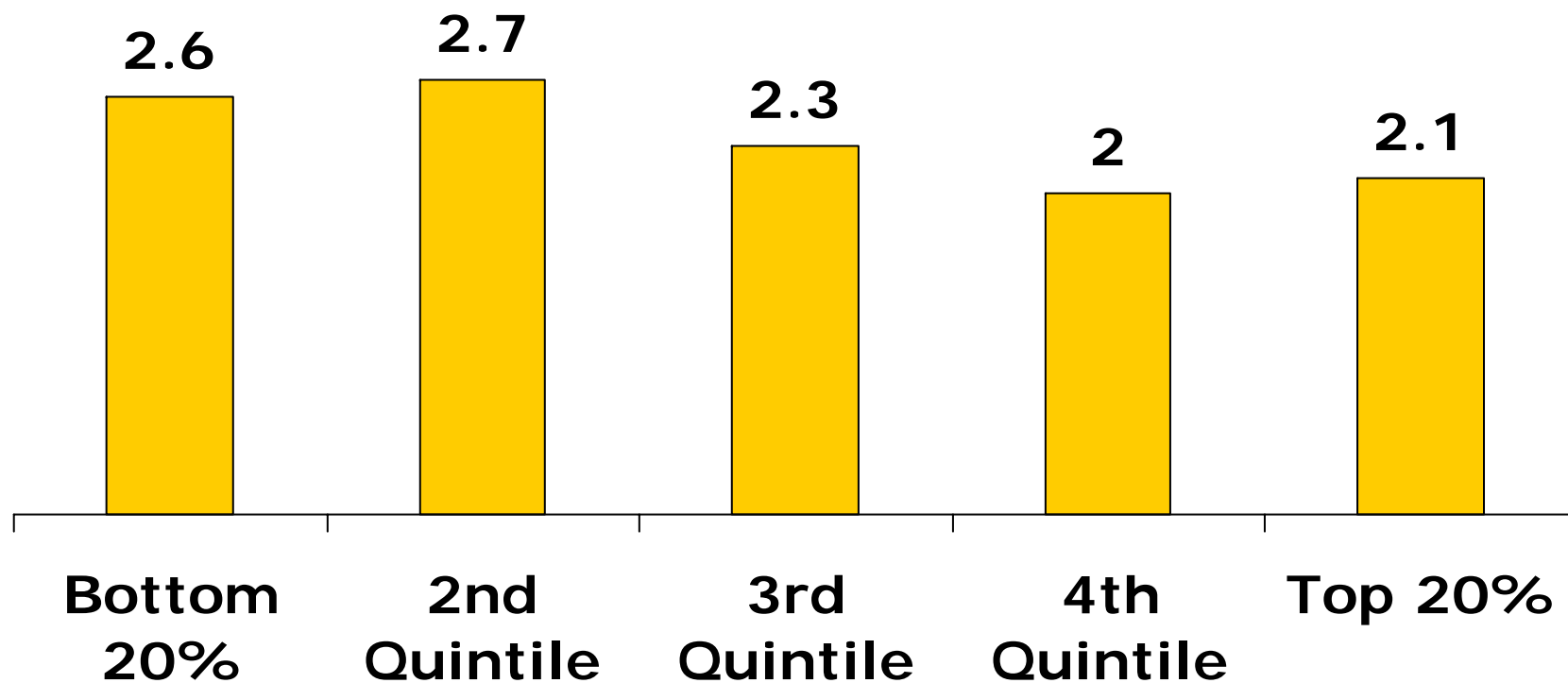
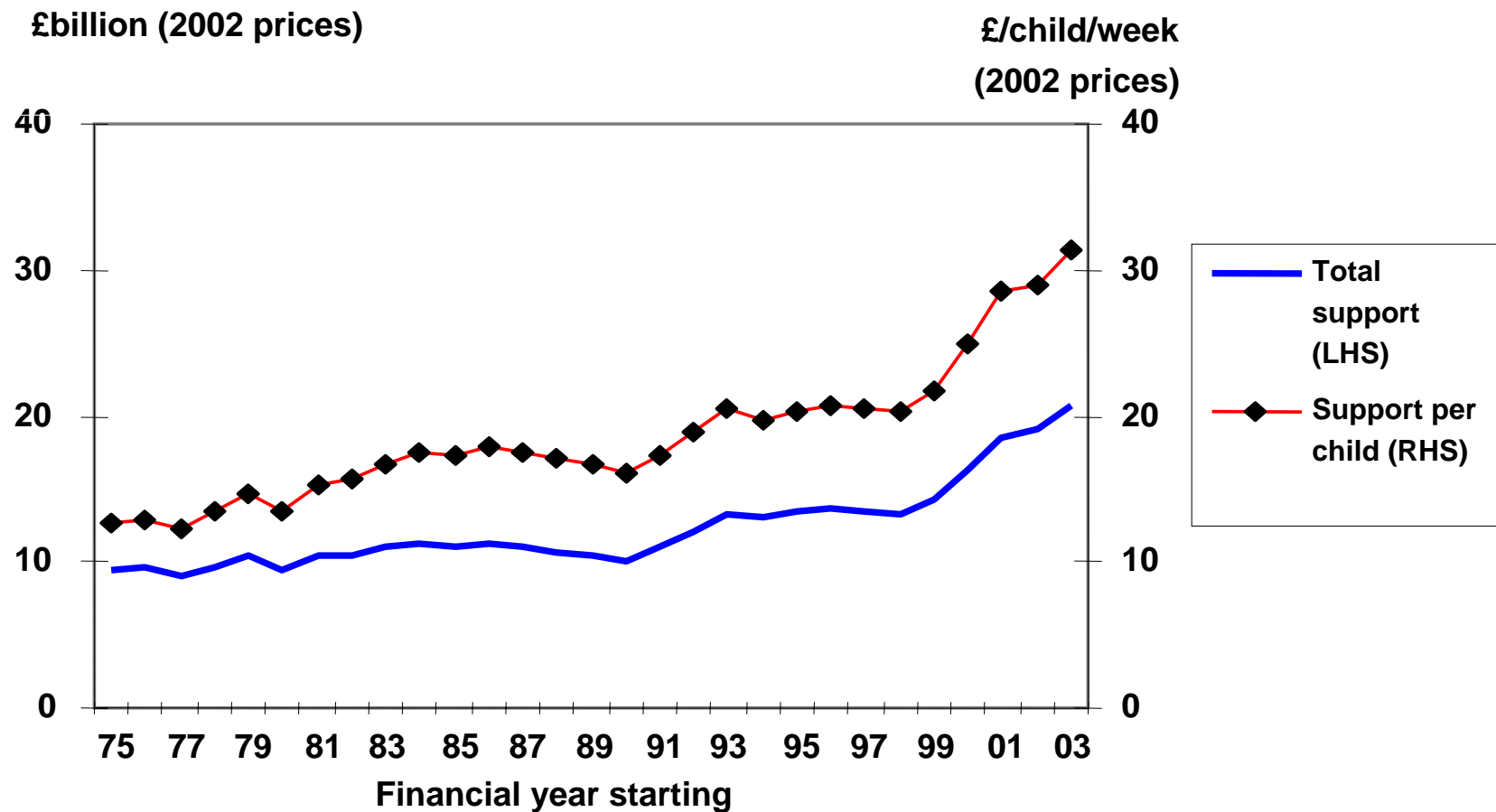


Since 1997/8 families in the bottom fifth of the population have seen their incomes grow faster than those at the top

Average annual percentage income growth 1997/98-2004/05

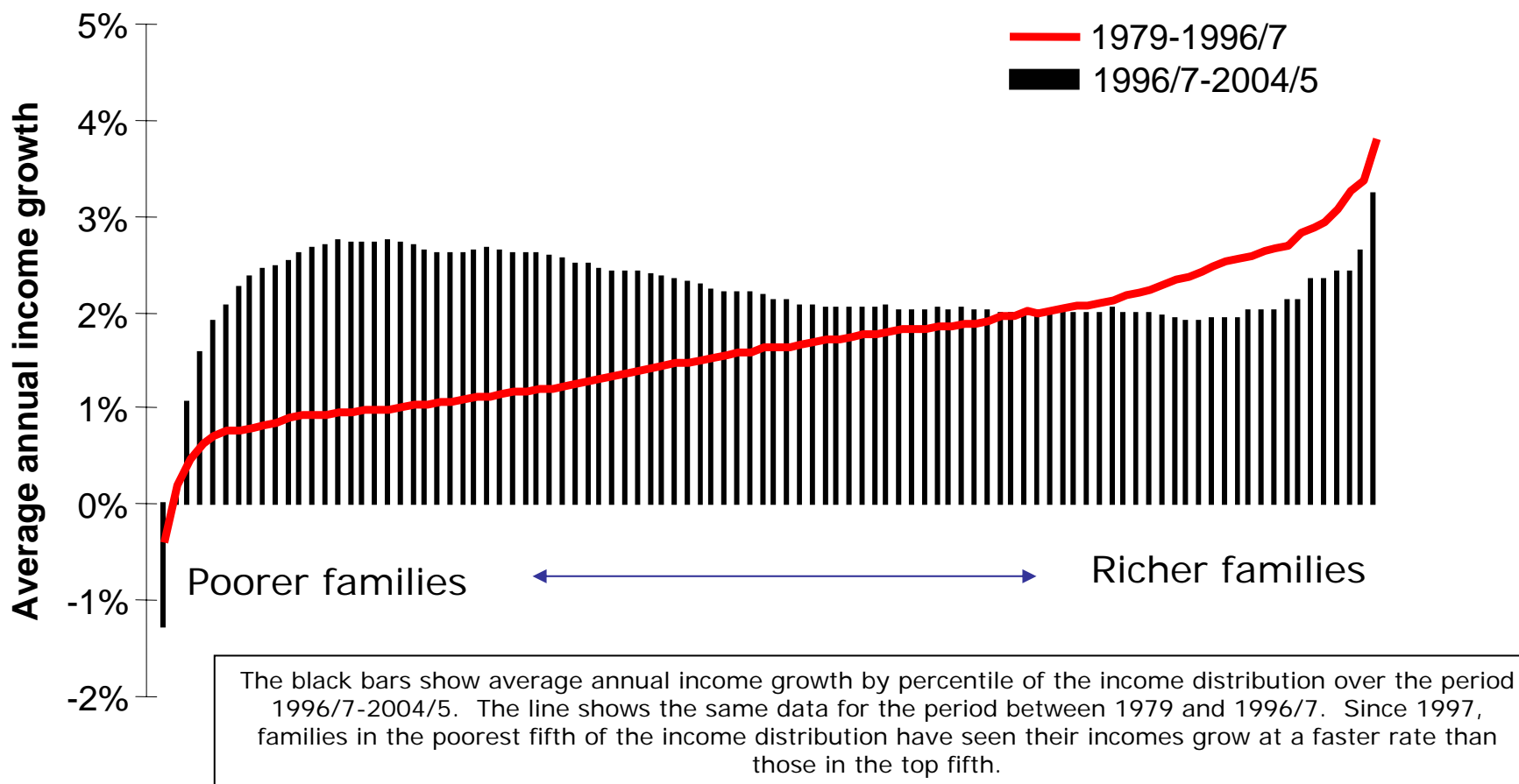


UK tax and benefit support for children, 1975-2003

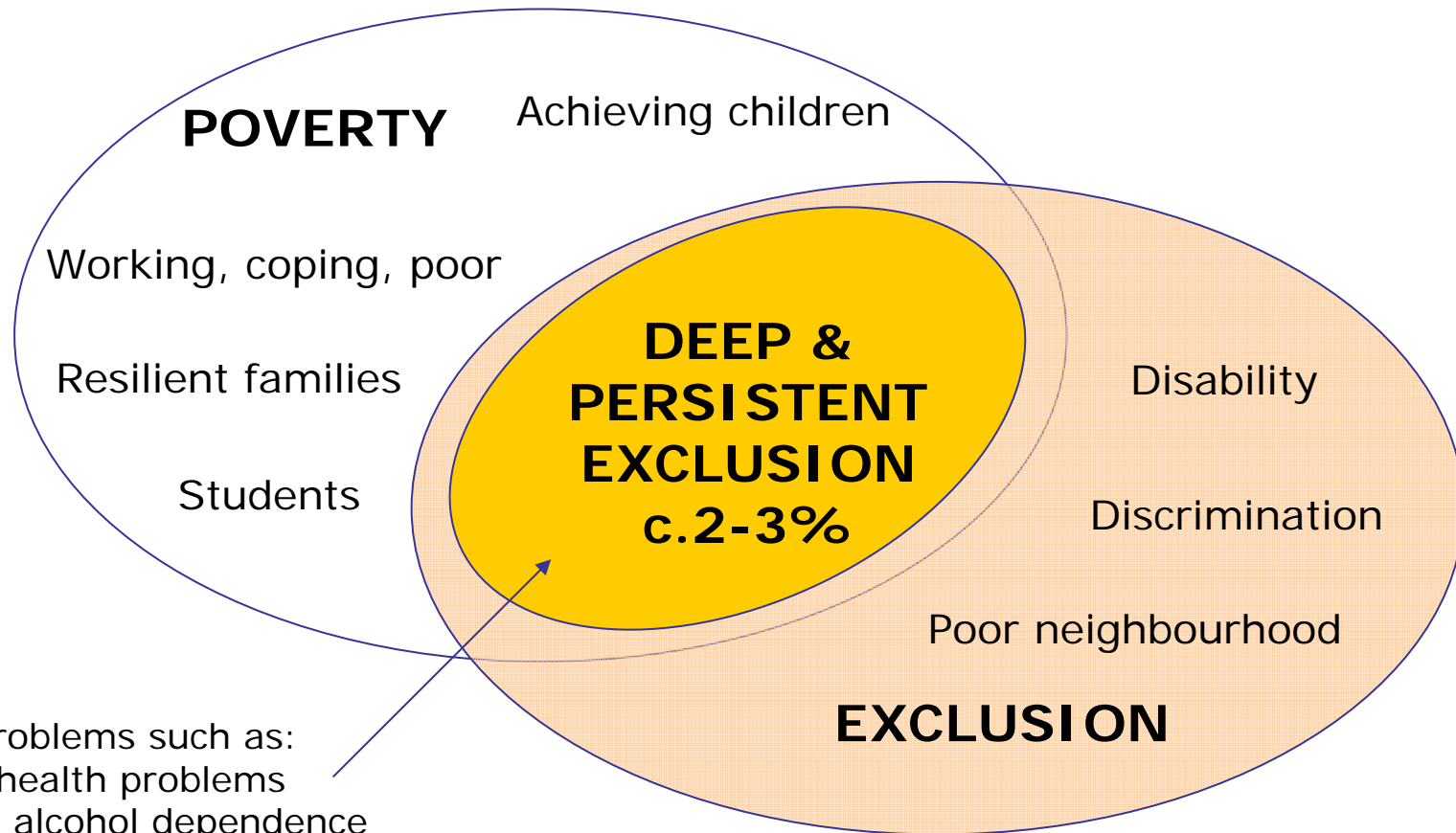


There has been faster income growth for poorer families since 1997 – particularly in contrast to the period 1979-97

Average annual income growth by percentile of the income distribution



It is precisely because of the successes in improving outcomes for the poor, that we are now able to focus on those facing deep and persistent exclusion



- Multiple problems such as:
- Mental health problems
 - Drug and/or alcohol dependence
 - Low or no basic skills
 - Crime and ASB
 - Poor housing or homelessness

What others have said

This Government has taken poverty and social exclusion very seriously and made genuine progress reducing disadvantage, especially among families with children"

Joseph Rowntree Foundation

The package of support for low income working families with children is now one of the most generous in the world"

Centre for Analysis of Social Exclusion, LSE

Between 1979 and 1999, children were relatively neglected in Britain, child poverty rates rose rapidly, those living in workless households soared and the numbers not in education or training also rose. [...]

Since then, there's been a big increase in spending on health and childcare, which is making a difference, but we're having to reverse two decades of neglect"

Prof. Jonathan Bradshaw, University of York