

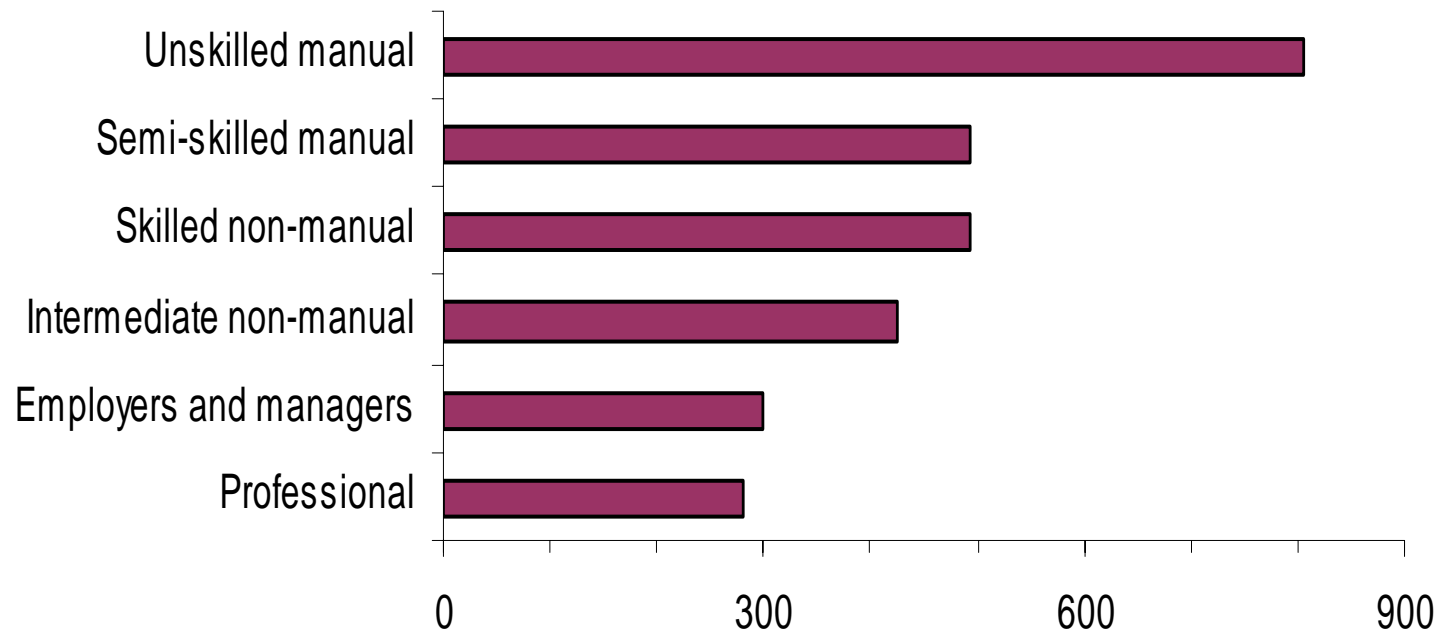
Parents and the economic well-being of families

Leon Feinstein

Centre for Research on the Wider Benefits of Learning,
Institute of Education,
London

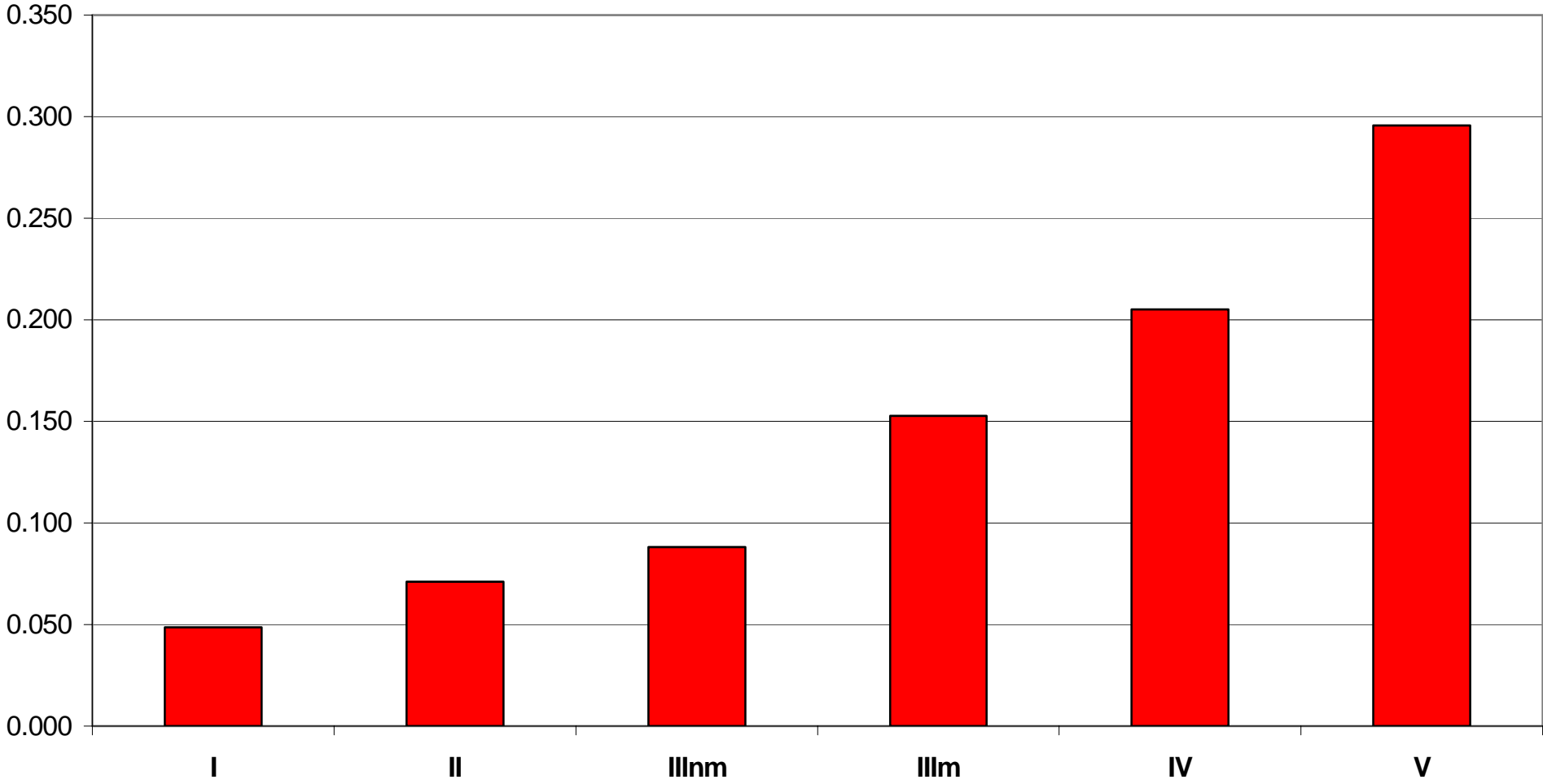


Mortality rates per 100,000 men aged 20-64, by skill-based occupational classification, England and Wales, 1991-3

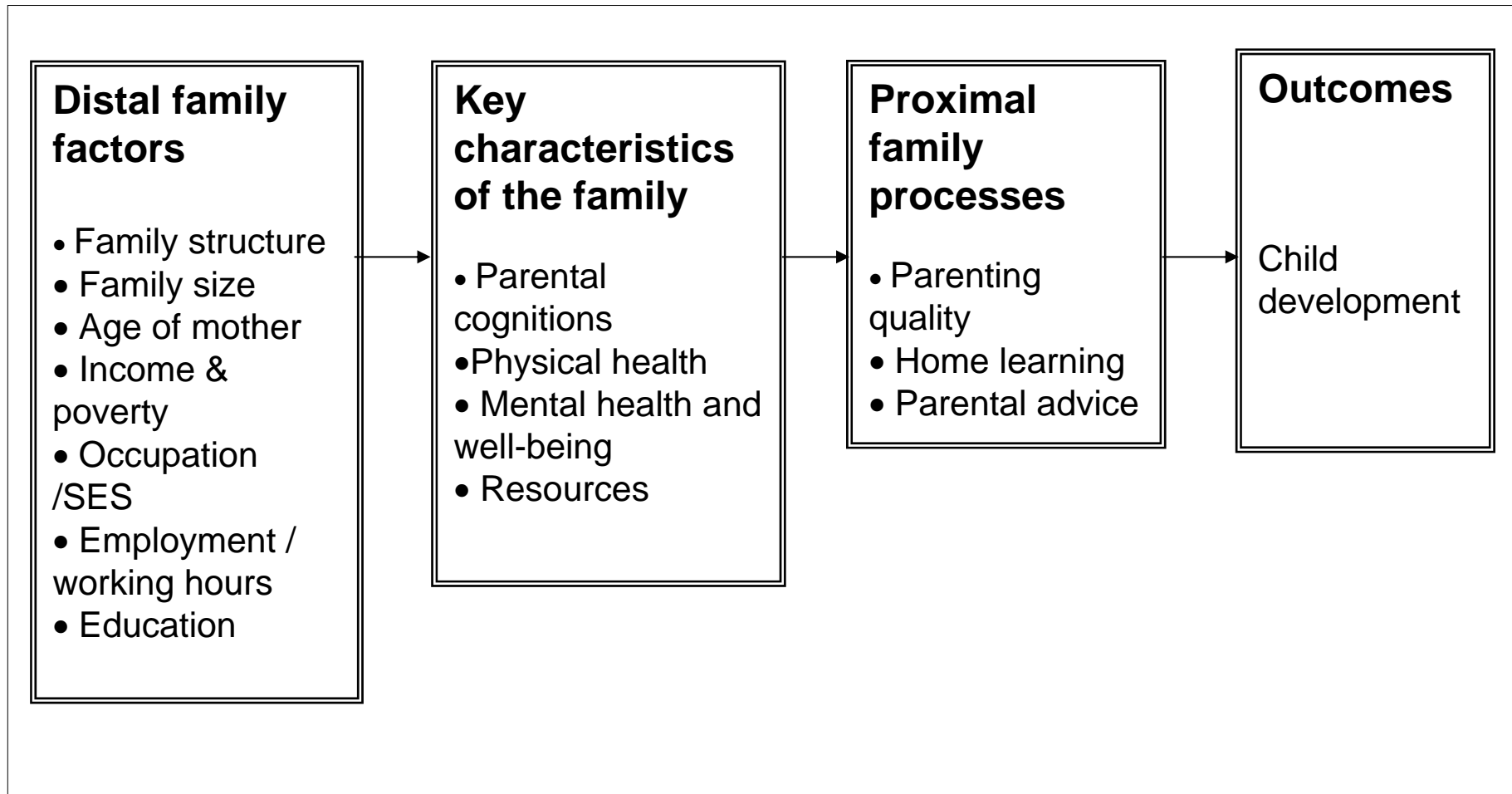


Source: Acheson et al., 1998

Probability of multiple deprivation at 30 years, by birth SES, 1970 Cohort Study

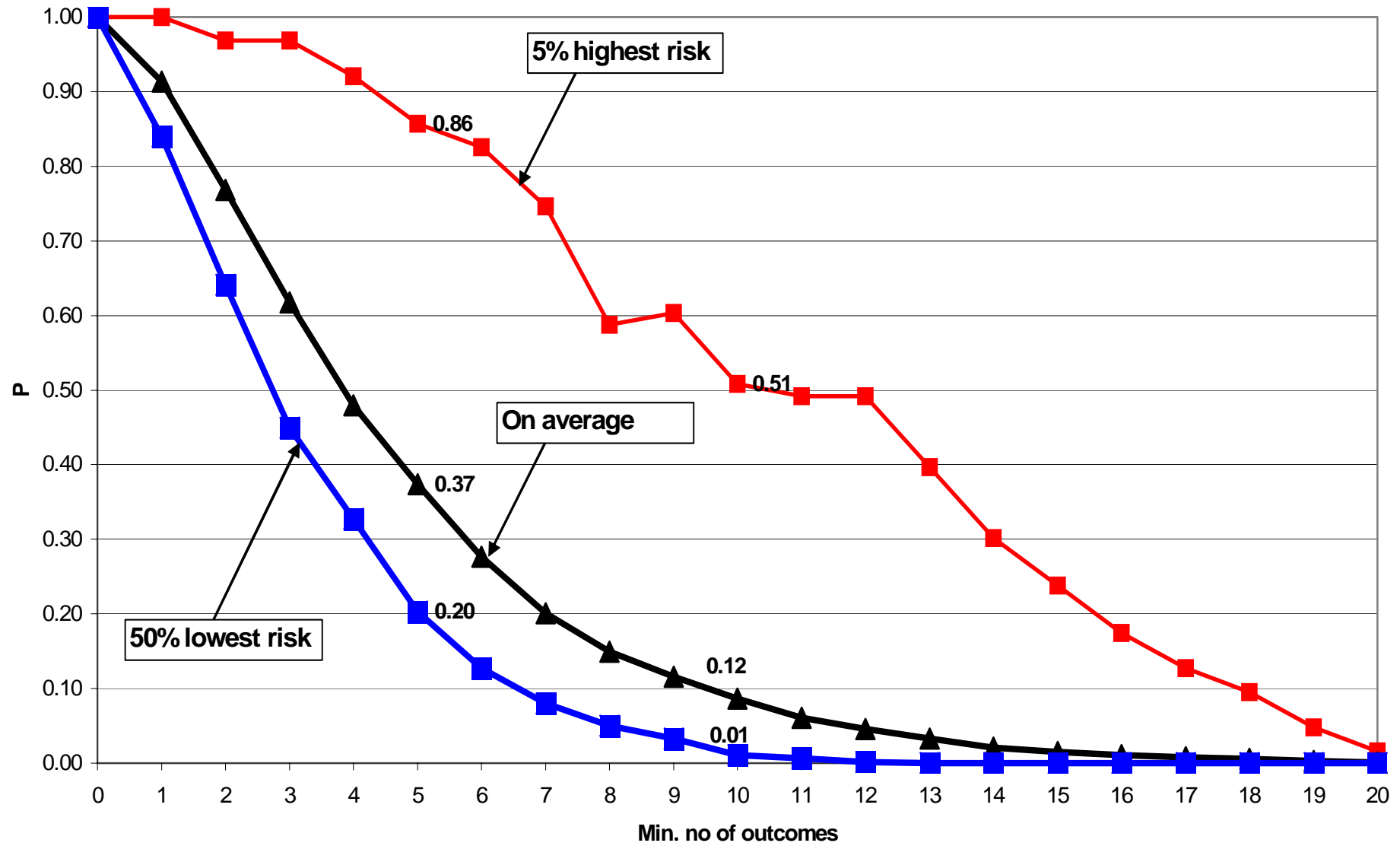


The family context

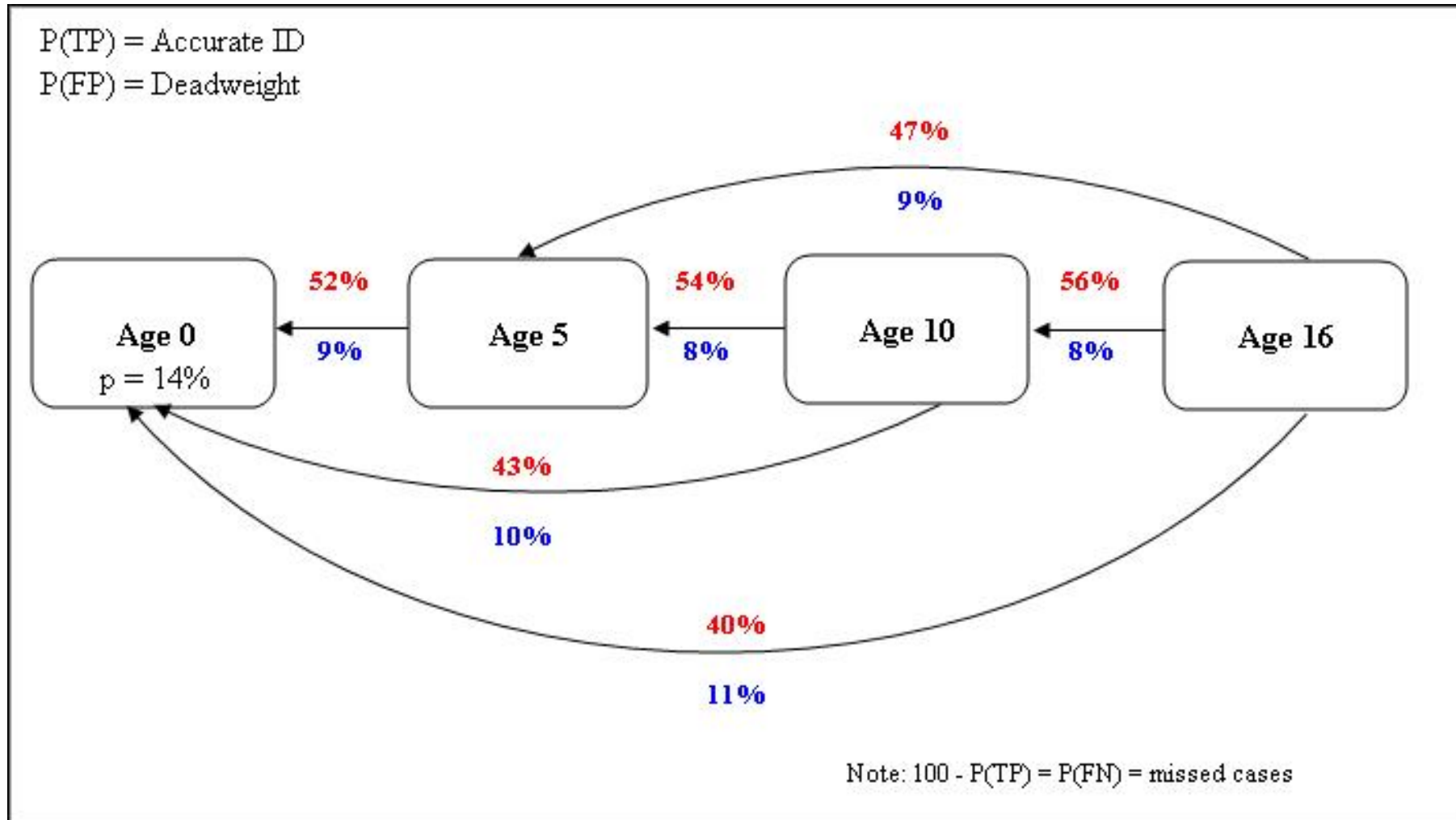


Plus: Dynamics; other contexts; wider socio-economic and cultural forces,

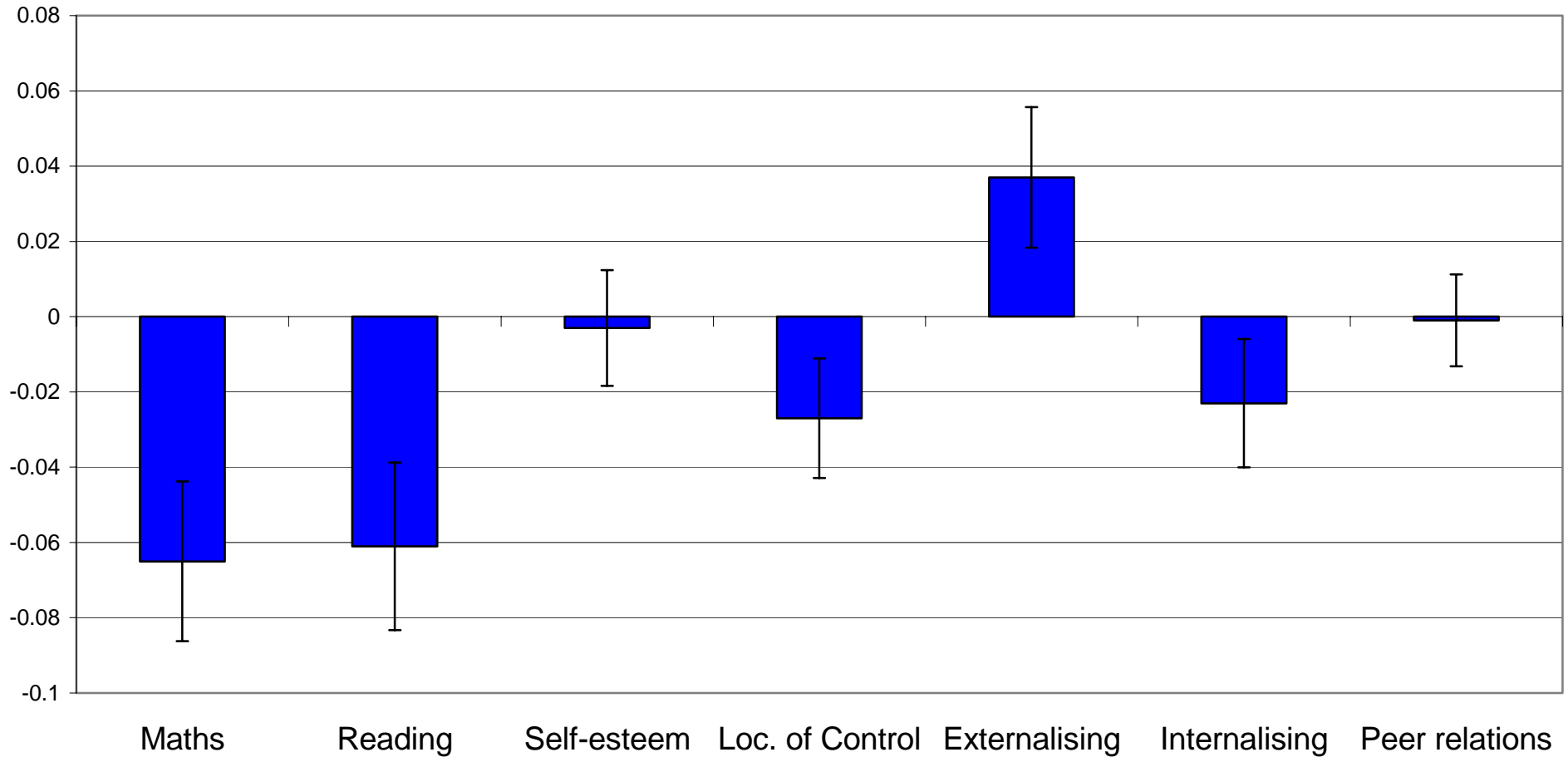
Probability of multiple deprivation by level of risk, 1970 Cohort



Risk continuity: Multiple adult deprivation age 30, BCS

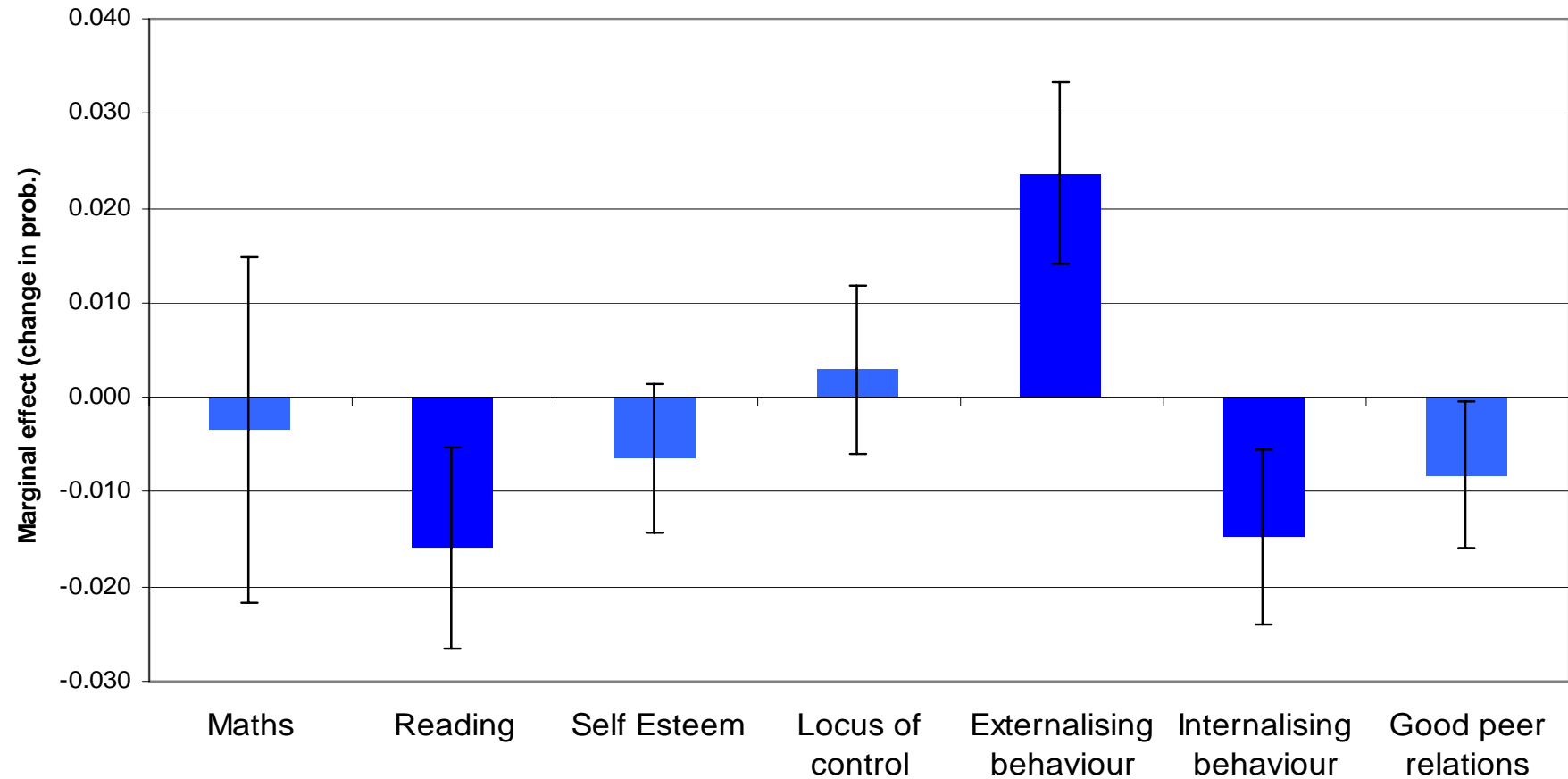


Predicted changes in probability of not obtaining Level 4; by age 10 capabilities, men



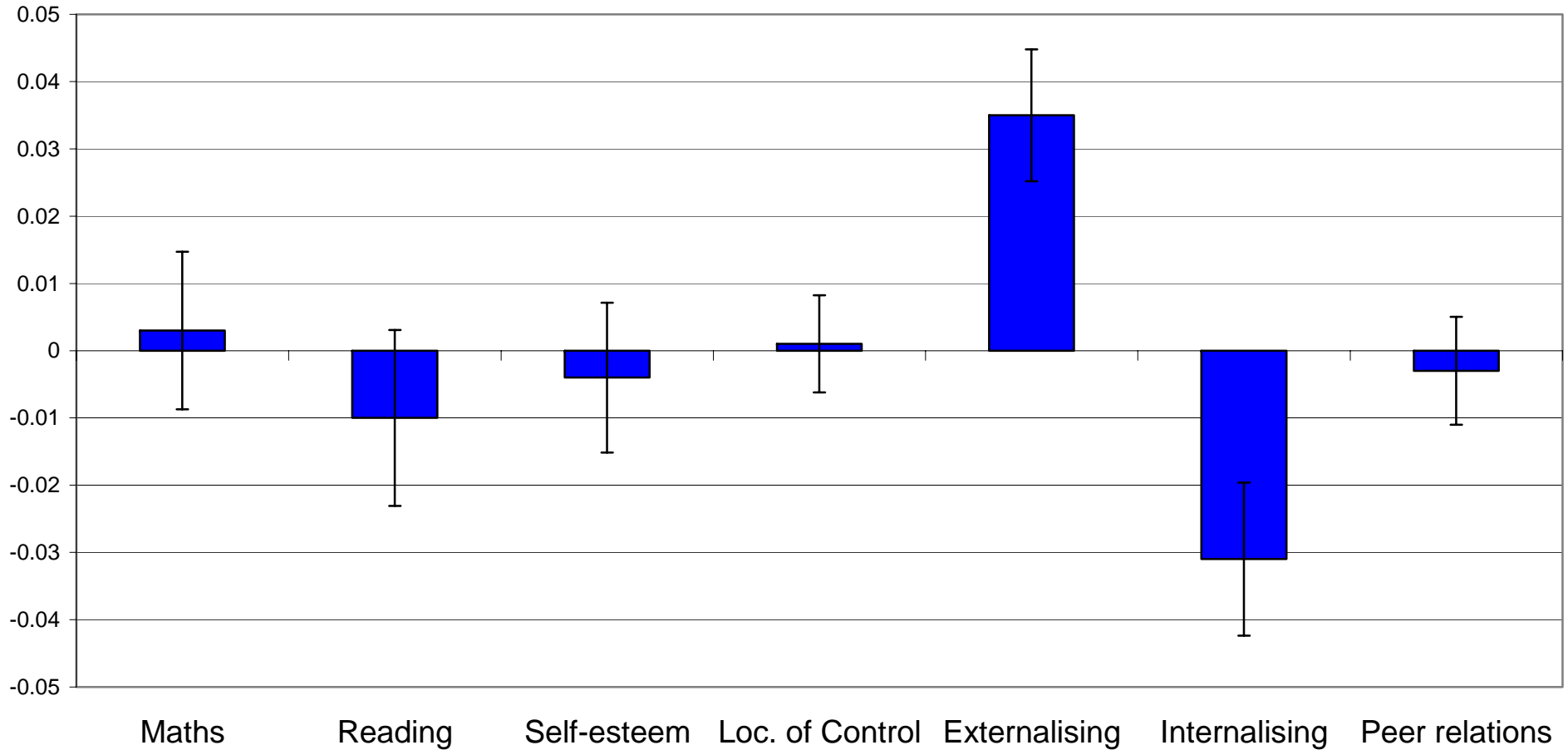
Error bars indicate 95% confidence

Probability of being in workless household with children at age 30



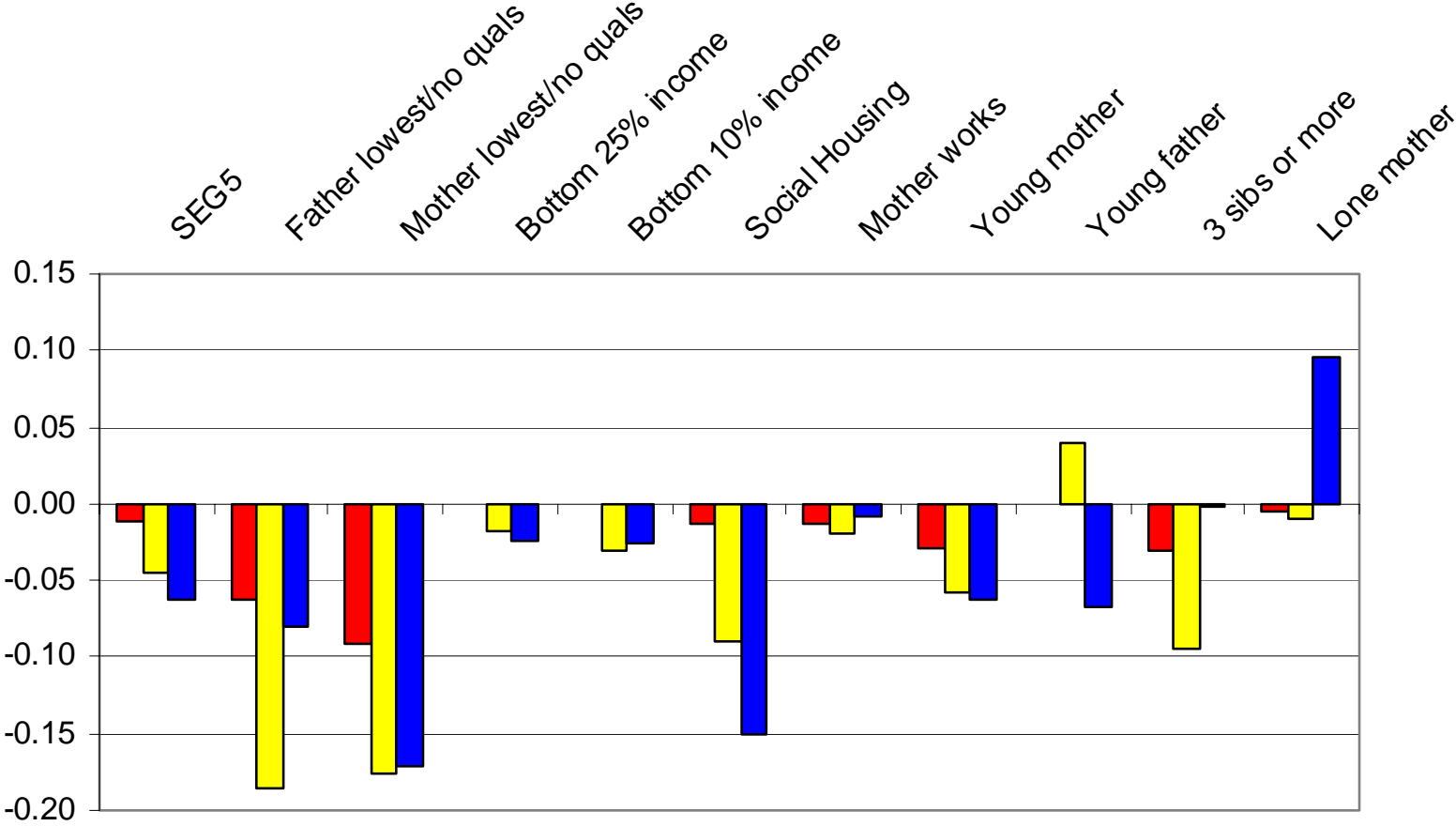
Source: Feinstein, L. and Bynner, J. (Dec 2003), 'The benefits of assets in childhood as protection against adult social exclusion: the relative effects of financial, human, social and psychological assets', Note to HM Treasury.

Predicted changes in probability of offending; by age 10 capabilities, men



Error bars indicate 95% confidence

Change in probability of Level 4, conditional on other risk factors



Combinations of risks for children living in families with 3 risk Factors, MCS.

%	Dep	Ill	Smk	Alcoh	Viol	Fin Strss	Workl	Teen M	Bsc Skill	OverCrow
6.02	.	.	X	.	.	X	.	X	.	.
4.19	.	.	X	X	.	X
4.19	.	.	X	X	X	.
2.97	.	.	X	.	.	.	X	X	.	.
2.84	X	.	X	X
2.84	X	.	X	X	.	.
2.64	X	X	.	X
2.50	X	.	X	X	.
2.37	X	X	.	X	.
2.37	X	.	.	X	X	.
2.30	X	X	.	.	X	.
2.23	X	.	.	.	X	.	.	.	X	.
1.96	X	.	X	.	X
1.96	X	X	.	.	X
1.83	X	X	X	.
1.83	X	X	X	.
1.76	.	.	X	X	.	.	.	X	.	.
1.56	X	X	X
51.76	Other patterns									

Key policy issues

- The integration of services
 - Vertically
 - Horizontally
 - Through the lifecourse
 - Around the person, family and community
- The importance of processes alongside structures
- Professionalisation of the social care workforce
- The need for high quality interventions (enduring, lifelong in accessibility and appropriate)