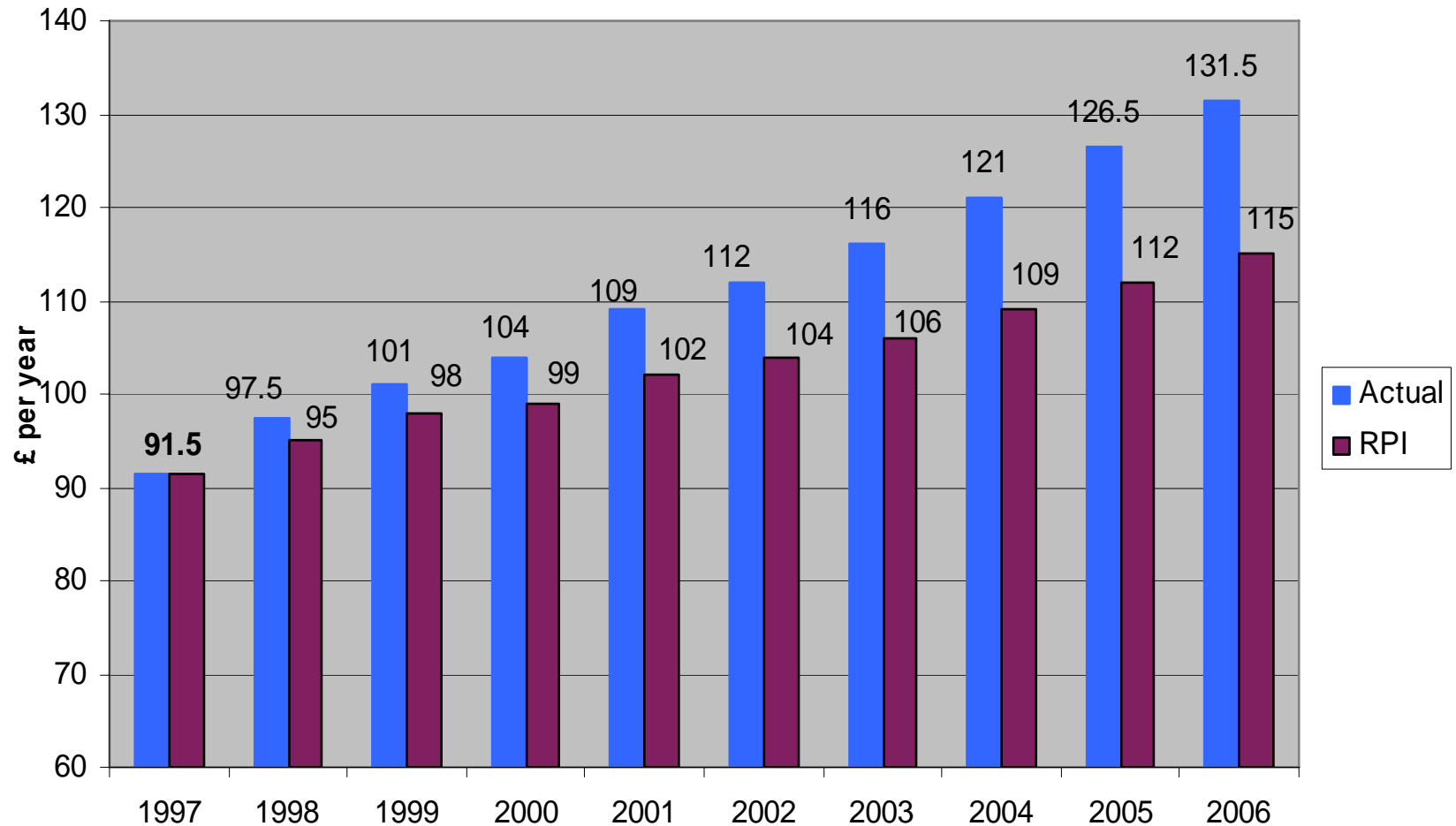


Actual licence fee compared to RPI baseline since 1997

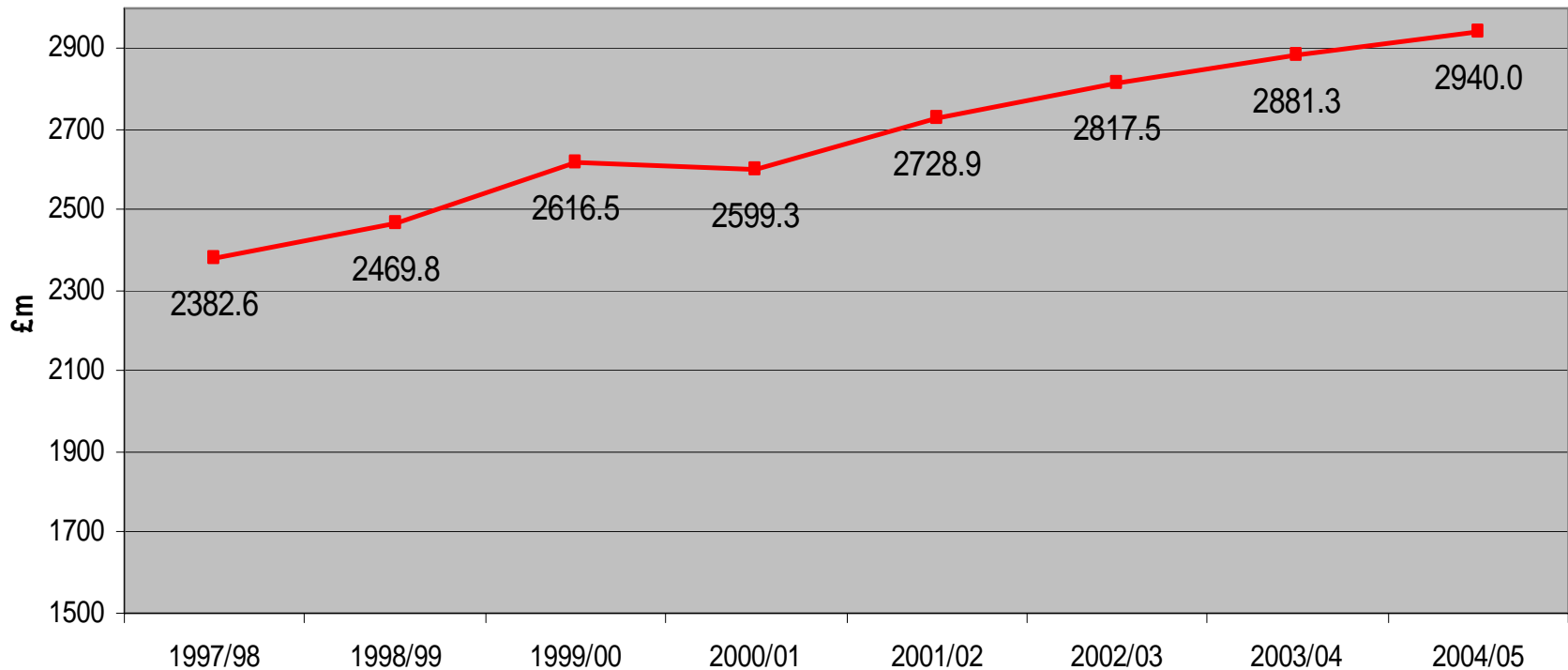


Source: BBC Annual Reports, ONS

Real licence fee income

- Real licence fee income has risen faster than the licence fee itself because of household growth and reductions in evasion

Real licence fee income since 1997 (2004/05 prices)

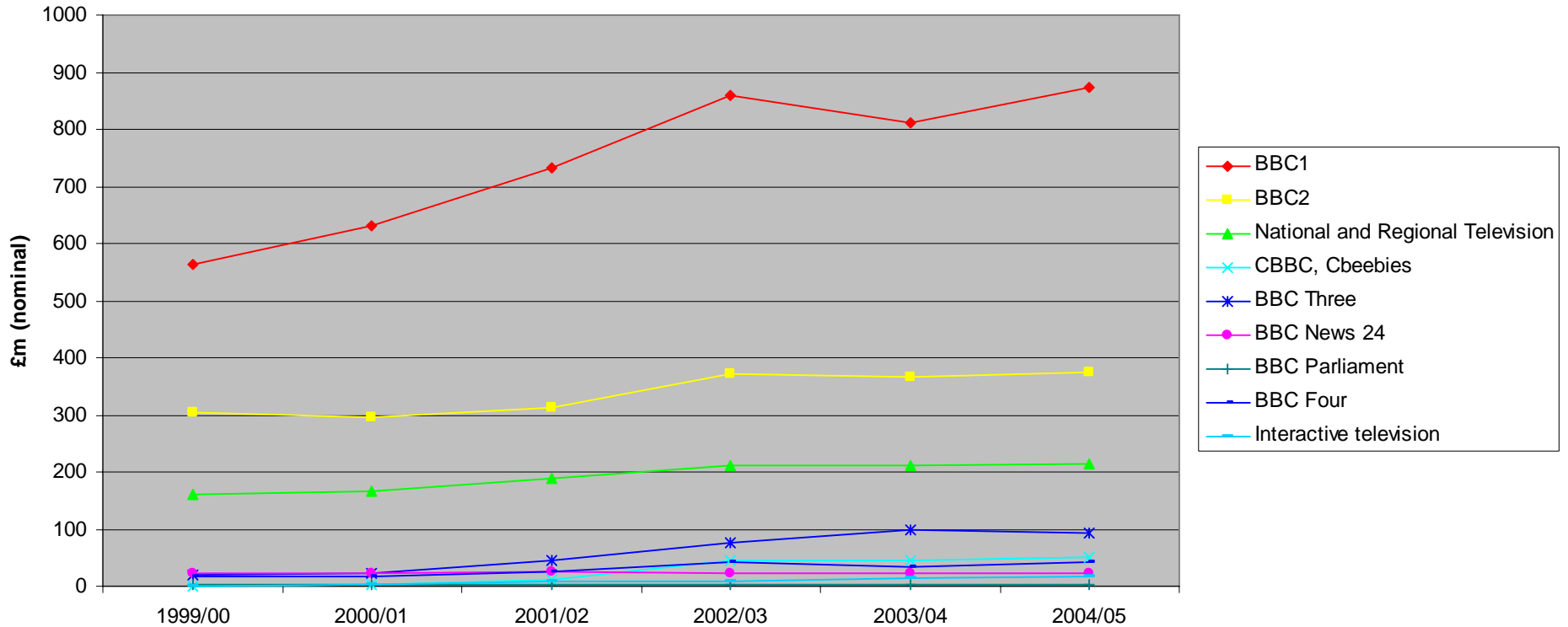


Source: BBC Annual Reports

Note: The BBC's financial year runs from April to April.

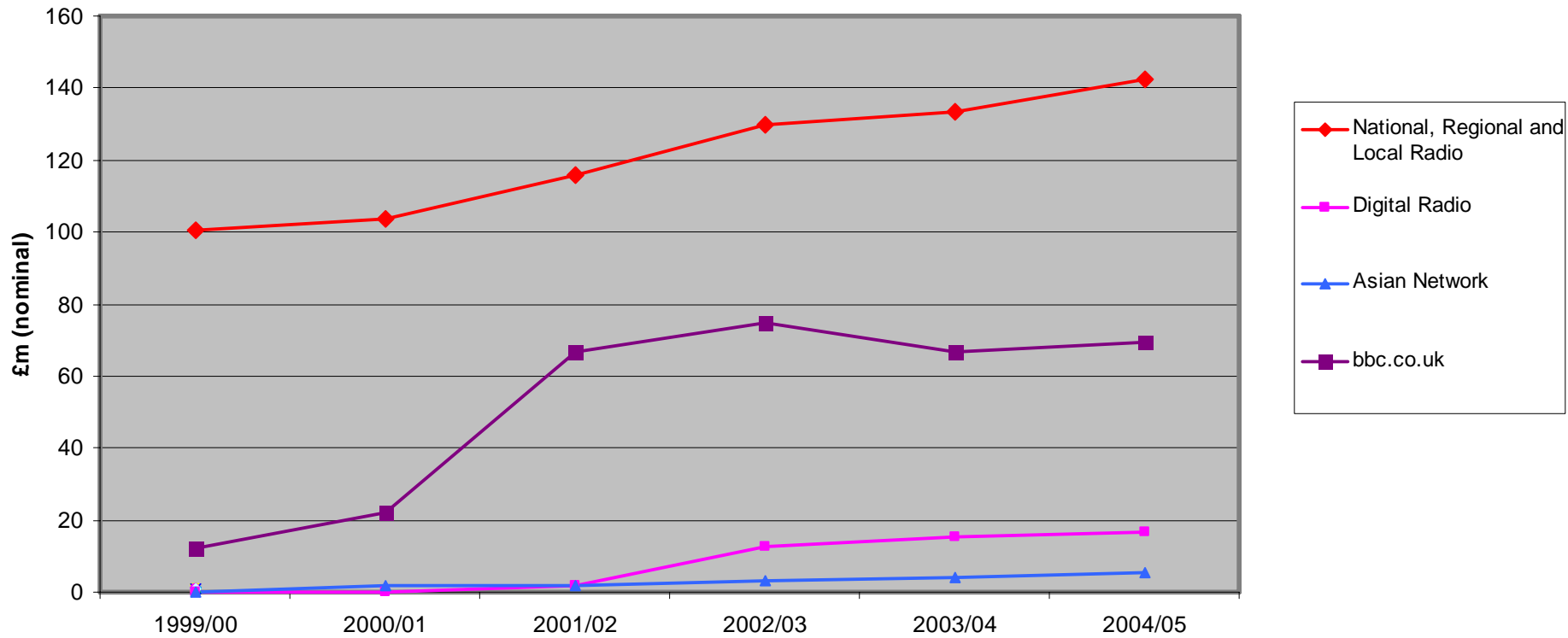
Expenditure on BBC analogue and digital TV channels

BBC spend on TV services



Source: BBC Annual Reports.

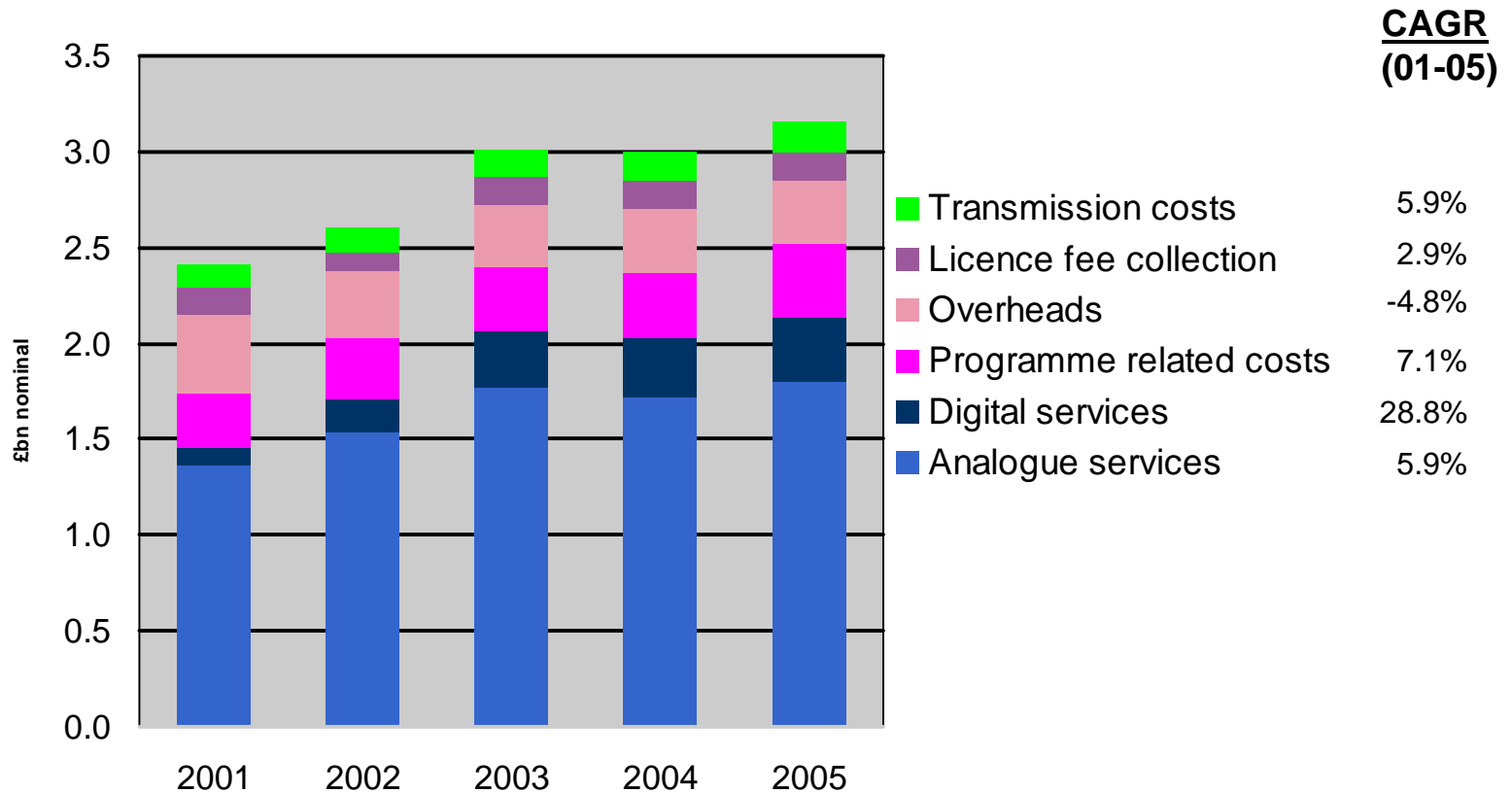
Expenditure on online and radio services



Source: BBC Annual Reports.

Change in spending on different areas

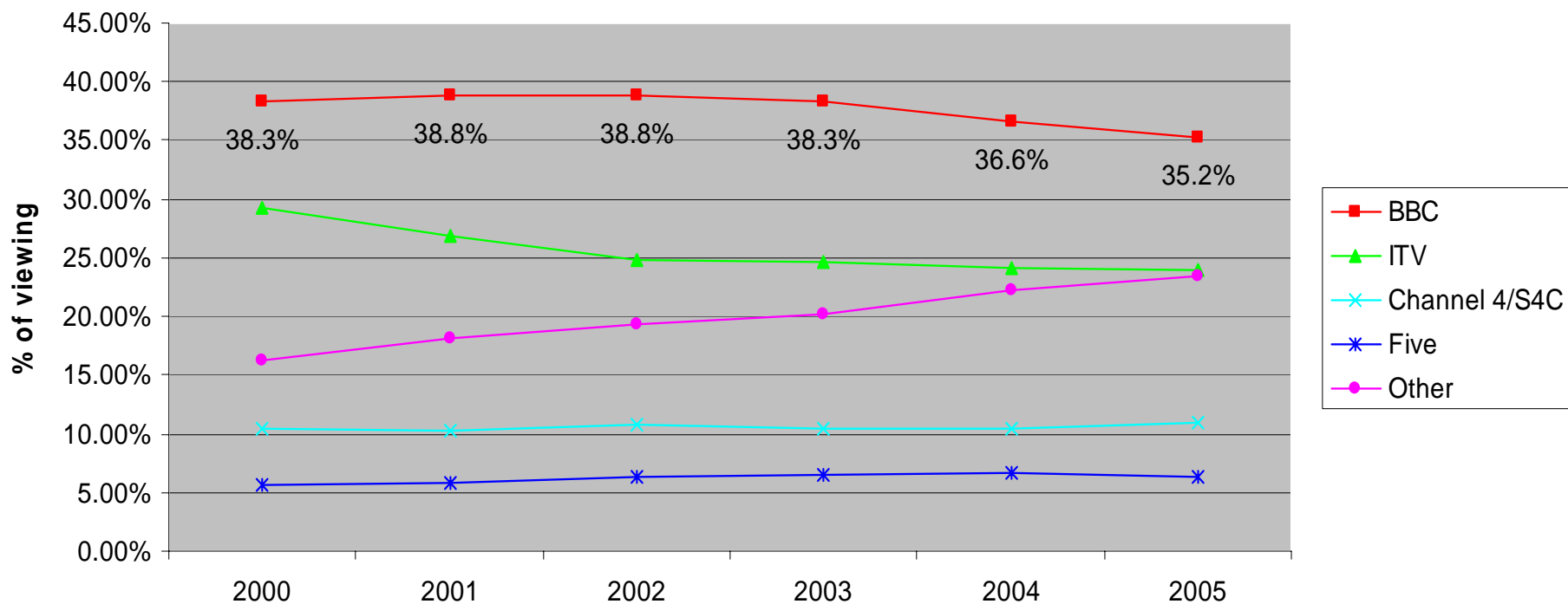
- Expenditure on digital service increased by an average of 28.8% per year between 2001 and 2005 while expenditure on analogue services increased by 5.9% per year over the same period



Source: BBC Annual Reports.

Changes in TV viewing since 2000

Portfolio viewing share of different broadcasters 2000-2005



Source: BARB