

# **Monthly Statistics of Building Materials and Components**

August 2009

No. 414

## NOTES

In tables where figures have been rounded to the nearest final digit, there may be an apparent slight discrepancy between the sum of the constituent items and the total as shown.

Symbols. The following symbols have been used throughout.

.. = not available (P) = provisional

- = nil or negligible (R) = revised

All figures are subject to revision.

### **A National Statistics publication**

National Statistics are produced to high professional standards set out in the National Statistics Code of Practice. They undergo regular quality assurance reviews to ensure they meet customer needs.

Unless otherwise stated, the statistics published in this volume have been collected by the Office for National Statistics on behalf of the Department for Business, Innovation & Skills.

Further information about the contents of this publication can be obtained from Construction Market Intelligence, Bay 616, 1, Victoria Street, London, SW1H 0ET;  
Telephone : 020 - 7215 - 1555 Fax : 020 - 7215 - 1304  
E-mail : [materialstats@bis.gsi.gov.uk](mailto:materialstats@bis.gsi.gov.uk).

URN 09/313h

2 September 2009

ii

## CONTENTS

	<u>Page</u>
Table 1 : Construction Material Price Indices	1
Table 2 : Price Indices of Construction Materials – monthly	2 & 3
Table 3 : Price Indices of Construction Materials – annual averages	4
Table 4 : Sales of Sand and Gravel in Great Britain	5
Table 5 : Sales of Sand and Gravel by English Regions, Wales and Scotland	6 & 7
Table 6 : Sales of Sand and Gravel by English and Welsh Counties and Scottish Regions	8 & 9
Table 7 : Slate : Production, Deliveries and Stocks	10
Chart 1 : Deliveries of Sand & Gravel and Ready-Mixed Concrete	11
Table 8 : Cement and Clinker : Production, Deliveries and Stocks	12
Chart 2 : Deliveries of Bricks, Concrete Building Blocks and Cement	13
Table 9 : Bricks : Production, Deliveries and Stocks for Great Britain	14 & 15
Table 10 : Bricks : Production, Deliveries and Stocks by English Regions, Wales and Scotland	16 to 19
Table 11 : Concrete Building Blocks : Production, Deliveries and Stocks for Great Britain	20 & 21
Table 12 : Concrete Building Blocks : Production, Deliveries and Stocks by English Regions, Wales and Scotland	22 & 23
Table 13 : Concrete Roofing Tiles; Fibre Cement Products; Ready-Mixed Concrete	24
Chart 3 : Comparison of Imports and Exports	25
Table 14 : Value of Overseas Trade in Selected Materials and Components for Constructional Use : Imports (cif) and Exports (fob)	26 to 35



**Table 1: Construction Material Price Indices**

United Kingdom	2005 = 100					
	2004	2005	2006	2007	2008	2009
<b>(a) New Housing</b>						
January	94.0	97.5	101.6	109.8	115.3	119.7
February	94.5	98.8	102.6	111.7	116.8	120.6
March	95.3	99.3	103.4	112.4	117.5	120.6
April	96.0	99.8	103.6	112.3	118.2	120.2
May	96.5	100.4	104.6	113.7	119.0	120.1 (P)
June	97.0	100.4	105.8	114.4	118.7	119.6 (P)
July	97.8	100.7	106.5	115.2	120.0	119.6 (P)
August	97.4	100.7	107.6	116.3	120.5	
September	97.3	100.3	107.7	116.3	120.4	
October	97.2	100.3	108.8	116.4	121.1	
November	97.1	100.6	109.5	116.0	120.4	
December	97.3	101.2	110.0	115.8	119.7	
Annual Average	96.5	100.0	106.0	114.2	119.0	
<b>(b) Other New Work</b>						
January	89.6	98.9	100.5	110.1	114.3	122.9
February	90.2	100.7	101.7	111.7	116.2	122.1
March	91.6	100.8	102.7	112.1	117.3	121.6
April	93.2	101.1	103.1	112.0	119.2	120.7
May	94.8	100.7	104.4	112.9	121.6	120.4 (P)
June	96.5	100.4	105.6	113.3	123.7	120.0 (P)
July	97.4	100.2	106.8	113.9	126.4	120.2 (P)
August	97.8	99.7	108.3	114.8	127.7	
September	98.0	99.2	108.7	114.4	128.6	
October	98.5	99.1	109.5	114.5	129.3	
November	98.2	99.4	109.6	114.0	126.6	
December	98.2	99.8	109.9	113.6	124.7	
Annual Average	95.3	100.0	105.9	113.1	123.0	
<b>(c) Repair and Maintenance</b>						
January	93.5	98.1	101.6	111.0	116.0	122.1
February	94.1	99.3	102.4	112.9	117.2	122.0
March	94.7	99.8	103.5	113.5	117.9	121.6
April	95.5	100.0	103.9	113.3	119.2	121.2
May	96.1	100.4	104.8	114.4	120.4	121.2 (P)
June	96.9	100.2	106.1	115.3	121.2	120.8 (P)
July	97.4	100.3	106.9	116.0	122.9	121.0 (P)
August	97.5	100.3	108.5	116.9	123.7	
September	97.5	99.9	109.0	117.2	123.8	
October	97.4	100.1	110.2	117.2	124.7	
November	97.4	100.5	110.8	116.6	123.5	
December	97.9	101.1	111.4	116.4	122.4	
Annual Average	96.3	100.0	106.6	115.1	121.1	
<b>(d) All Work</b>						
January	91.9	98.5	101.2	110.6	115.3	122.5
February	92.4	99.7	102.1	112.3	116.9	122.0
March	93.4	100.1	103.1	112.8	117.9	121.6
April	94.5	100.3	103.5	112.6	119.2	121.0
May	95.7	100.5	104.7	113.8	121.0	120.8 (P)
June	96.8	100.3	105.8	114.3	122.3	120.4 (P)
July	97.5	100.3	106.9	114.7	124.4	120.6 (P)
August	97.7	100.2	108.4	115.8	125.7	
September	97.8	99.7	108.7	116.0	126.2	
October	98.0	99.7	109.8	116.0	126.9	
November	97.8	100.2	110.2	115.5	125.0	
December	98.0	100.6	110.6	115.2	123.5	
Annual Average	96.0	100.0	106.3	114.1	122.0	

Note: These indices are weighted averages of Producer Price Indices. They do not include electrical or mechanical engineering materials.

Source ONS/BERR

# PRICES

## Table 2: Price Indices of Construction Materials

United Kingdom

	2008						2009
	Jul	Aug	Sep	Oct	Nov	Dec	Jan
<b>AGGREGATES</b>							
Coated roadstone - including levy	128.6	131.0	129.4	134.9	134.6	133.7	134.2
- excluding levy	128.0	130.5	128.9	134.6	134.2	133.3	133.8
Crushed rock - including levy	105.7	106.3	104.5	103.5	103.5	99.5	105.0
- excluding levy	102.1	103.4	101.0	99.8	99.3	94.5	98.9
Sand & gravel - including levy	117.5	117.3	119.6	117.2	120.4	121.8	117.1
- excluding levy	115.5	115.3	118.1	115.2	119.0	120.5	115.0
<b>CEMENT AND CONCRETE</b>							
Cement	128.0	130.0	130.8	130.7	130.4	130.6	138.7
Ready-mixed concrete	115.2	115.1	117.0	114.2	116.3	115.5	114.6
Plasterboard etc	104.6	105.6	104.5	104.4	104.1	104.7	113.0
Pre-cast concrete products	113.2	114.6	115.6	115.4	115.4	115.6	118.2
of which : Blocks, bricks, tiles & flagstones	114.0	114.5	116.1	115.8	115.9	116.6	120.6
Concrete reinforcing bars	191.7	188.8	185.2	169.5	151.2	148.0	139.7
Fibre Cement Products *	124.9	125.0	125.0	127.9	129.7	130.0	130.0
<b>CLAY PRODUCTS</b>							
All Bricks	110.3	105.2	105.1	106.5	104.6	107.5	117.1
Ceramic tiles *	82.4	77.2	77.2	76.8	77.6	77.6	80.6
Ceramic sanitaryware *	120.0	122.4	122.4	122.8	122.8	122.8	130.9
<b>TIMBER AND JOINERY</b>							
Imported softwood	121.7	119.9	119.1	118.1	116.3	115.7	115.7
Imported plywood *	111.4	116.5	118.1	133.0	136.8	142.3	137.2
Sawn wood	129.5	127.5	127.4	124.5	122.4	121.9	118.0
Particle Board	114.3	114.1	113.9	113.0	112.1	112.5	112.3
Builders woodwork	111.2	111.6	116.5	116.2	116.3	118.8	118.8
of which : Doors & windows	115.6	116.6	118.6	118.1	118.3	125.0	124.7
<b>METAL PRODUCTS</b>							
Fabricated structural steel	146.2	151.7	157.7	152.4	141.3	131.0	122.3
Doors & windows	90.0	90.0	89.9	90.1	90.4	90.3	90.4
Screws etc*	106.8	108.1	108.3	106.8	106.8	106.8	111.0
Other Builders Ironmongery *	109.4	109.4	110.6	111.2	109.0	109.0	109.7
Central heating boilers *	106.5	107.6	107.6	106.9	108.1	108.5	108.3
Central heating pumps *	121.8	121.8	120.8	120.8	120.8	120.8	120.8
Taps and Valves for sanitaryware *	131.6	136.4	143.6	143.7	149.6	149.6	152.5
Metal sanitaryware *	105.2	105.2	107.8	108.6	109.0	109.0	110.5
<b>PLASTIC PRODUCTS</b>							
Pipes and fittings (rigid)	116.8	122.9	122.9	121.7	121.6	120.9	121.6
Pipes and fittings (flexible)	108.0	109.0	114.5	131.3	131.3	129.4	129.4
Sanitaryware *	111.6	112.6	112.6	112.6	112.6	112.6	113.5
Doors & windows	105.8	105.8	106.7	107.2	108.2	108.4	108.7
Floorcovering *	122.6	121.4	124.2	..	..	..	..
<b>OTHER BUILDING MATERIALS</b>							
Asphalt products *	141.8	144.5	146.2	146.7	149.6	148.4	148.4
Insulating materials (thermal or acoustic)	105.7	105.4	104.1	104.6	105.2	105.8	105.4
Paint (aqueous) *	113.2	113.2	113.2	113.2	113.2	114.4	115.6
Paint (non-aqueous)	112.3	112.1	109.3	110.3	112.2	112.2	112.7
Lighting equipment for buildings	102.0	100.6	102.0	102.8	104.0	104.8	105.5
Lighting equipment for roads	107.1	107.1	107.1	107.0	107.6	108.9	111.4
Electric water heaters *	122.9	123.1	123.3	123.9	123.8	123.8	123.8
Kitchen furniture	105.9	105.2	103.7	105.9	104.9	105.8	106.2

Notes : 1. These indices, which are compiled by the Office for National Statistics, are a selection of producer price indices.

The complete list is available online at [www.statistics.gov.uk](http://www.statistics.gov.uk), by searching for the reference MM22.

\*.The Office for National Statistics state that these Indices are based on relatively few quotes and in the long term should not be relied upon for contractual purposes.

2005=100

Feb	Mar	Apr	May	June (P)	July (P)	
						AGGREGATES
133.1	135.8	136.5	137.1	140.9	141.0	Coated roadstone - including levy
132.6	135.5	136.0	136.6	140.4	140.6	- excluding levy
105.2	109.7	107.7 (P)	108.4 (P)	113.2	113.2	Crushed rock - including levy
99.4	105.0	101.6	102.5	109.2	109.4	- excluding levy
116.8	116.7	115.5	114.2	111.4	111.4	Sand & gravel - including levy
113.4	113.2	111.3	109.7	106.5	106.6	- excluding levy
						CEMENT AND CONCRETE
143.3	142.4	141.3	141.1	138.6	138.9	Cement
115.0	114.5	113.6	113.9	113.3	113.5	Ready-mixed concrete
..	..	..	..	..	..	Plasterboard etc
118.9	118.8	118.8	118.8	..	118.6	Pre-cast concrete products
121.7	121.5	121.7	121.6	120.9	121.1	of which : Blocks, bricks, tiles & flagstones
138.4	130.0	122.1	124.2 (P)	123.8	120.6	Concrete reinforcing bars
..	..	..	..	..	..	Fibre Cement Products *
						CLAY PRODUCTS
119.7	118.6	117.5	116.1	116.2	116.4	All Bricks
82.8	83.4	83.5	83.5	83.4	83.1	Ceramic tiles *
130.9	130.9	130.9	129.7	129.7	130.9	Ceramic sanitaryware *
						TIMBER AND JOINERY
114.3	114.5	115.9	116.0	117.5	128.9	Imported softwood
138.0	127.6	121.0	119.1	111.9	106.5	Imported plywood *
116.2	117.5	115.9 (R)	117.5	117.8	120.3	Sawn wood
111.7	110.9	111.1	111.5	111.5	111.4	Particle Board
119.1	119.7	119.7 (P)	119.3	119.2	119.2	Builders woodwork
125.5	127.1	127.4 (P)	127.1	127.3	127.3	of which : Doors & windows
						METAL PRODUCTS
120.4	114.0	107.9	107.0 (P)	104.6	101.8	Fabricated structural steel
90.3	90.2	90.2	90.2	90.2	89.3	Doors & windows
110.5	110.6	110.6	110.6	..	..	Screws etc *
109.8	109.8	109.8	109.5	..	..	Other Builders Ironmongery *
109.0	109.0	109.0	109.0	109.0	108.6	Central heating boilers *
120.8	120.8	125.3	125.3	125.3	125.3	Central heating pumps *
152.5	148.4	148.4	148.4	153.6	153.6	Taps and Valves for sanitaryware *
111.4	111.4	111.4	111.4	..	..	Metal sanitaryware *
						PLASTIC PRODUCTS
122.7	122.5	122.3 (P)	121.6 (P)	121.6	121.3	Pipes and fittings (rigid)
135.5	130.2	134.5	127.6	126.9	131.1	Pipes and fittings (flexible)
113.9	113.9	113.2	113.2	113.3	113.3	Sanitaryware *
108.8	108.8	108.8 (P)	108.6 (P)	106.9	107.0	Doors & windows
..	..	..	..	..	..	Floorcovering *
						OTHER BUILDING MATERIALS
147.5	147.3	147.7	147.2	147.1	147.3	Asphalt products *
106.1	106.8	105.7	104.1	102.9	103.0	Insulating materials (thermal or acoustic)
118.4	118.5	118.6	118.6	118.6	118.6	Paint (aqueous) *
112.6	112.8	113.1	113.0	113.0	113.0	Paint (non-aqueous)
105.0	104.9	104.9	104.9	104.9	109.7	Lighting equipment for buildings
112.2	112.6	112.6 (P)	114.0 (P)	113.7	113.8	Lighting equipment for roads
123.8	134.6	134.7	135.2	134.6	134.6	Electric water heaters *
106.2	108.1	106.4	106.1	105.3	105.8	Kitchen furniture

Source : ONS

# PRICES

## Table 3: Price Indices of Construction Materials - Annual Averages

United Kingdom	2005=100					
	2003	2004	2005	2006	2007	2008
<b>AGGREGATES</b>						
Coated roadstone - old						
- including levy	95.6	95.8	100.0	108.2	113.8	130.0
- excluding levy	94.6	94.9	99.9	107.5	113.7	129.7
Crushed rock - old						
- including levy	102.7	103.2	98.6	96.1	95.2	103.4
- excluding levy	105.4	105.7	98.4	94.5	93.6	100.6
Sand & gravel - old						
- including levy	93.9	98.6	101.2	105.3	109.9	117.5
- excluding levy	92.1	97.6	100.9	105.7	110.9	116.3
<b>CEMENT AND CONCRETE</b>						
Cement	92.2	92.6	100.0	108.8	114.7	128.4
Ready-mixed concrete	95.8	94.5	100.6	107.7	106.7	113.4
Plasterboard etc	94.3	96.5	100.1	99.3	101.8	104.7
Pre-cast concrete products	91.3	95.7	100.0	102.3	110.6	114.4
of which: Blocks, bricks, tiles & flagstones	91.9	95.6	100.0	103.3	112.8	115.4
Concrete re-inforcing bars	75.2	105.9	100.0	112.9	129.8	158.3
Fibre Cement Products	95.1	96.3	100.1	106.7	116.8	124.2
<b>CLAY PRODUCTS</b>						
All Bricks	89.0	92.3	98.0	104.3	111.1	109.0
Ceramic tiles	95.0	96.1	98.7	102.0	84.8	81.0
Ceramic sanitaryware	96.2	97.0	100.1	102.5	112.6	119.9
<b>TIMBER AND JOINERY</b>						
Imported Softwood	104.9	103.3	100.3	107.9	133.6	123.6
Imported Plywood	86.4	100.1	100.1	100.8	106.5	120.7
Sawn Wood	89.9	96.9	100.0	103.1	122.0	127.8
Particle Board	94.5	95.6	99.4	102.6	112.7	113.8
Builders woodwork	90.6	94.1	99.4	102.2	108.0	113.6
of which						
Doors & windows	90.3	97.0	99.7	101.7	108.7	116.7
<b>METAL PRODUCTS</b>						
Fabricated structural steel	66.9	89.1	100.0	99.8	118.1	137.2
Doors & windows	93.6	96.6	101.4	101.2	87.5	87.0
Screws etc	73.8	76.7	94.4	106.1	105.9	106.6
Nails etc	92.1	94.5	100.0	..	..	..
Other builders' ironmongery	100.6	97.7	99.9	102.4	105.3	108.5
Central heating boilers	95.7	97.4	99.9	102.3	105.0	106.3
Central heating pumps	98.1	99.0	100.7	108.2	114.5	120.2
Taps & valves (domestic)	84.5	85.5	98.7	..	..	..
Metal sanitaryware	100.0	96.0	100.0	103.5	108.3	106.3
Copper pipes	80.4	95.6	108.5	168.1	163.2	154.1
<b>PLASTIC PRODUCTS</b>						
Pipes and fittings (rigid)	93.1	93.9	99.2	103.9	112.2	118.1
Pipes and fittings (flexible)	93.9	95.2	99.8	104.4	110.6	115.3
Sanitaryware	96.0	98.1	100.2	100.9	102.6	112.0
Doors & windows	95.5	98.1	99.9	101.3	103.5	106.2
Floor covering	98.2	97.7	100.1	107.8	109.8	..
<b>OTHER BUILDING MATERIALS</b>						
Worked monumental or building stone	86.6	96.7	100.0	106.3	..	..
Asphalt products	80.4	89.9	98.4	120.6	132.2	140.4
Insulating materials (thermal or acoustic)	92.8	94.2	99.9	102.5	106.0	105.6
Paint (aqueous)	94.2	95.0	99.8	101.7	104.6	112.7
Paint (non-aqueous)	98.2	96.7	99.7	100.8	102.6	110.0
Lighting equipment for buildings	99.9	100.7	100.1	..	..	..
Lighting equipment for roads	81.9	85.5	99.5	98.7	100.9	105.2
Electric heating apparatus	93.7	99.4	100.0	101.8	105.4	112.0
Electric water heaters	77.3	88.9	100.4	111.6	119.8	122.3
Kitchen furniture	105.2	106.5	100.0	96.7	99.7	103.6

Source : ONS

Note : These indices, which are compiled by the Office for National Statistics, are a selection of producer price indices. The complete list is published monthly by HMSO in the Business Monitor MM22.

MINING AND QUARRYING

**Table 4 : Sales of Sand and Gravel in Great Britain**

Great Britain		Thousand tonnes						
		<b>Sand</b>	<b>Gravel</b>	<b>Sand &amp; Gravel</b>	<b>Sand, Gravel &amp; Hoggin</b>	<b>Sand &amp; Gravel</b>	of which	
		for Building	for Concreting	for Concreting & other uses	for Coating	for Fill	Total	<b>Marine-Dredged</b>
1998		11,164	29,215	29,547	3,189	12,662	85,777	13,139
1999		10,664	29,276	28,735	2,184	10,968	81,827	13,468
2000		12,105	30,128	30,355	2,150	13,127	87,865	14,356
2001		13,926	33,675	36,799	2,596	10,460	97,456	13,611
2002		11,152	30,334	35,642	2,106	6,279	85,513	12,833
2003		11,515	31,412	31,739	1,493	6,594	82,753	12,249
2004		11,017	32,366	30,184	1,380	6,399	81,346	12,996
2005		12,419	30,704	30,648	1,557	5,173	80,501	13,025
2006		9,499	29,893	31,963	2,346	4,195	77,896	13,974
2007		8,649	29,803	31,114	1,695	4,254	75,515	13,777
2008		8,864	28,922	28,297	.	.	74,651	12,582
2003	Q2	3,294	8,441	8,803	343	1,802	22,683	3,234
	Q3	3,117	8,310	8,481	379	1,761	22,048	3,324
	Q4	2,423	7,285	7,019	395	1,340	18,462	2,850
2004	Q1	2,672	7,599	6,703	283	1,454	18,711	2,673
	Q2	3,021	8,649	8,214	315	1,770	21,969	3,639
	Q3	2,889	8,528	8,230	372	1,632	21,651	3,563
	Q4	2,435	7,590	7,037	410	1,543	19,015	3,121
2005	Q1	3,141	7,180	7,271	376	986	18,954	3,040
	Q2	3,467	8,490	8,226	439	1,553	22,175	3,519
	Q3	3,246	8,054	8,201	398	1,422	21,321	3,491
	Q4	2,565	6,980	6,950	344	1,212	18,051	2,975
2006	Q1	2,189	7,100	7,058	523	919	17,789	2,927
	Q2	2,582	8,126	9,032	623	1,174	21,537	4,531
	Q3	2,603	7,725	8,602	640	1,144	20,714	3,498
	Q4	2,125	6,942	7,271	560	958	17,856	3,018
2007	Q1	2,081	6,919	7,242	443	904	17,589	3,177
	Q2	2,305	7,762	8,202	432	1,179	19,880	3,596
	Q3	2,304	7,829	8,191	398	1,162	19,884	3,675
	Q4	1,959	7,293	7,479	422	1,009	18,162	3,329
2008	Q1	2,151	7,156	7,286	379	1,180	18,152	3,035
	Q2	2,385	7,724	7,668	456	2,041	20,274	3,541
	Q3	2,279	7,644	7,091	..	..	19,341	3,337
	Q4	2,049	6,398	6,252	490	1,695	16,884	2,669
2009	Q1	1,727	5,313	5,330	695	1,566	14,631	2,389
	Q2 (P)	1,918	5,631	5,765	480	1,571	15,365	2,637

Note : The figures above are from a quarterly sample inquiry whereas those below are from the Annual Minerals Raised Inquiry, a census.

The two inquiries differ because some respondents are only able to provide estimated information for the quarterly inquiry.

1997	11,397	30,130	28,718	3,940	12,181	86,366	12,004
1998	10,840	30,244	31,003	2,970	10,911	85,968	12,952
1999	11,356	31,730	31,614	2,585	10,924	88,209	13,424
2000	11,758	31,167	31,797	2,461	12,051	89,234	14,356
2001	11,515	31,656	35,135	2,257	7,647	88,210	13,611
2002	11,190	31,224	32,434	2,031	5,842	82,721	12,832
2003	11,851	31,411	30,236	1,766	4,957	80,221	12,131
2004	10,688	32,529	32,346	2,437	8,058	86,057	12,996
2005	11,558	29,848	32,163	2,172	6,651	82,392	13,024
2006	9,907	29,815	31,002	2,648	6,869	80,242	13,974
2007	9,877	30,202	29,350	2,636	6,436	78,501	13,777

## MINING AND QUARRYING

**Table 5 : Sales of Sand and Gravel by Standard region, Wales and Scotland**

	<b>Sand</b>		<b>Gravel</b>	<b>Sand &amp; Gravel</b>	<b>Sand, Gravel &amp; Hoggin</b>	<b>Sand &amp; Gravel</b>	of which
	for Building	for Concreting	for Concreting & other uses	for Coating	for Fill	Total	<b>Marine-Dredged</b>
<b>(a) Q1 2009</b>							
North East	21	113	65	..	..	..	..
Yorkshire & the Humber	136	326	309	263	65	1,100	23
North West	212	257	..	26	41	606	32
West Midlands	219	736	785	..	72	1,836	0
East Midlands	117	605	577	26	85	1,410	0
East of England	179	887	957	149	638	2,810	118
South East	414	1,094	1,662	46	187	3,403	1,796
South West	148	569	377	..	246	..	118
Wales	134	..	89	..	..	..	..
Scotland	147	563	439	101	198	..	0
Great Britain	1,727	5,313	5,330	695	1,566	14,631	2,389
of which marine-dredged	126	1,022	1,160	..	44	2,389	
<b>(b) Q1 2008</b>							
North East	46	..	..	25	71	533	148
Yorkshire & the Humber	139	499	493	0	93	1,224	29
North West	268	395	..	29	74	855	52
West Midlands	274	920	999	..	101	2,340	0
East Midlands	183	893	784	..	..	1,934	0
East of England	235	1,067	1,146	105	362	2,915	160
South East	492	1,533	2,166	33	103	4,327	2,218
South West	143	729	572	..	..	1,542	173
Wales	172	..	101	3	138	..	255
Scotland	199	711	728	89	115	1,842	0
Great Britain	2,151	7,156	7,286	379	1,180	18,152	3,035
of which marine-dredged	164	1,398	1,417	18	38	3,035	

Note : Regions refer to Government Office Regions

# MINING AND QUARRYING

Thousand tonnes

	<b>Sand</b>		<b>Gravel</b>	<b>Sand &amp; Gravel</b>	<b>Sand, Gravel &amp; Hoggins</b>	<b>Sand &amp; Gravel</b>	of which
	for Building	for Concreting	for Concreting & other uses	for Coating	for Fill	Total	<b>Marine-Dredged</b>
<b>(c) Annual 2008</b>							
North East	204	..	..	..	..	..	..
Yorkshire & the Humber	511	1839	1802	..	..	4604	101
North West	1070	1587	..	116	..	..	..
West Midlands	987	3917	4071	..	..	9594	0
East Midlands	725	3349	2832	..	..	7235	0
East of England	902	4378	4885	510	2315	12990	703
South East	2255	5983	8625	..	..	17729	9052
South West	780	..	..	..	..	..	..
Wales	647	..	..	..	..	..	..
Scotland	783	3089	2700	511	878	7961	..
Great Britain	8864	28922	28297	..	..	74651	12582
of which marine-dredged	738	5727	5816	..	..	12582	
<b>(d) Annual 2007</b>							
North East	142	880	..	..	145	..	..
Yorkshire & the Humber	596	2,015	2,134	0	480	5,225	131
North West	838	1,679	..	94	280	..	..
West Midlands	1,076	3,665	4,363	..	189	9,463	0
East Midlands	818	3,593	3,253	..	209	8,065	0
East of England	1,124	4,153	5,108	445	1,140	11,970	809
South East	1,658	7,018	9,763	183	623	19,245	9,845
South West	898	3,257	2,358	80	574	7,167	782
Wales	822	..	..	14	163	2,462	1,152
Scotland	677	2,579	2,818	408	451	6,933	0
Great Britain	8,649	29,803	31,114	1,695	4,254	75,515	13,777
of which marine-dredged	909	6,176	6,507	23	162	13,777	

Note : Regions refer to Government Office Regions

# MINING AND QUARRYING

## Table 6 : Sales of Sand and Gravel by English & Welsh County and Scottish Region

Thousand tonnes

	2007		2008		2009	
	Quarter 4	Quarter 1	Quarter 2	Quarter 3	Quarter 4	Quarter 1
<b>NORTH EAST</b>	..	..	..	..	..	..
Northumberland	146		146	154	) 240	122
Tyne and Wear *	58	74	61	45	)	
Durham	..	..	..	..	..	..
Cleveland *	126	119	..	..	..	..
<b>YORKSHIRE &amp; THE HUMBER</b>	1,259	1,224	1,307	1,128	945	1,100
North Yorkshire	700	663	739	643	) 595	470
West Yorkshire	95	81	..	72	)	
South Yorkshire	190	196	..	184	) 350	630
Humberside *	274	284	268	229	)	
<b>NORTH WEST</b>	..	855	911	..	775	606
Cumbria	163	178	186	180	168	150
Lancashire*	..	..	88	82	72	76
Merseyside *	) 76	..	91	) 263	( 63	) 108
Greater Manchester	) 109	185	190	)	( 168	)
Cheshire	349	334	356	333	304	272
<b>WEST MIDLANDS</b>	2,310	2,340	2,496	2,465	2,293	1,836
Shropshire	( ..	207	217	216	203	) 1,330
Staffordshire	( 1,407	1,432	1,524	1,497	1,395	)
West Midlands	( ..	144	146	145	138	) 308
Warwickshire	( 308	300	334	333	301	)
Hereford & Worcester	237	257	275	274	256	198
<b>EAST MIDLANDS</b>	1,898	1,934	1,897	1,832	1,572	1,410
Derbyshire	280	267	262	257	220	193
Nottinghamshire	646	672	658	634	551	435
Leicestershire	..	..	255	253	209	245
Northamptonshire	..	..	88	84	70	71
Lincolnshire	623	651	634	604	522	466
<b>EAST OF ENGLAND</b>	2,880	2,915	3,617	3,580	2,878	2,810
Cambridgeshire	639	650	764	757	624	580
Norfolk	) 481	505	675	) 1,107	863	821
Suffolk *	) ..	..	..	)		
Essex *	890	859	1,054	1,024	825	883
Bedfordshire	) 357	356	436	) 692	566	526
Hertfordshire	) ..	..	..	)		
<b>SOUTH EAST</b>	4,633	4,327	4,870	4,580	3,952	3,403
Buckinghamshire	209	202	216	212	194	117
Oxfordshire	252	271	303	288	258	207
Berkshire	316	214	228	220	201	239
Greater London *	1,113	992	1,161	1,125	1,042	993
Surrey	387	322	367	335	299	246
Kent *	1,127	1,094	1,236	1,128	871	741
Sussex East *	) ..	..	..	) 424	347	..
Sussex West *	) 242	271	..	)		..
Hampshire *	( 819	782	848	) 848	740	607
Isle of Wight *	( ..	..	..	)		20

Note : Regions refer to Government Office Regions

\* Includes marine-dredged.

# MINING AND QUARRYING

Thousand tonnes

	2007	2008	2009			
	Quarter 4	Quarter 1	Quarter 2	Quarter 3	Quarter 4	Quarter 1
<b>SOUTH WEST</b>	1,764	1,542	1,812	1,717	..	..
Gloucestershire	341	308	319	311	289	241
Wiltshire )	228	254	276 )	441	383	273
Avon * )	..	..	.. )	..	..	..
Somerset * (	..	..	..	..	..	..
Dorset * (	427	..	..	..	..	..
Devon * (	280 )	271	313	456	..	..
Cornwall (	335 )	..	..	..	..	..
<b>ENGLAND</b>	15,921	15,670	17,324	16,533	14,465	12,733
<b>WALES</b>	629	640	..	691	..	..
Clwyd	..	253	283	244 )	343	..
Gwynedd * )	59	..	.. )	195 )	)	26
Powys	0	0	0 )	..	0 )	..
Dyfed * )	101	121	.. )	.. )	174	..
Glamorgan West *	108	94	87	86 )	..	..
Glamorgan South *	..	..	..	.. )	138	139
Gwent * )	99	81	105	102 )	..	..
<b>SCOTLAND</b>	1,612	1,842	2,238	2,117	..	..
South of Scotland	159	175	217	200	171	133
North East Scotland	138	234	293	282	239	156
Highlands	150	154	185	177	147	131
Island Areas	28	24	28	27	23	21
East Central Scotland	104	127	159	154	128	104
West Central Scotland	563	633	776	720	601	483
Tayside and Fife	470	495	580	557	455	420
<b>GREAT BRITAIN</b>	18,162	18,152	20,274	19,341	16,884	14,631

Note : Regions refer to Government Office Regions

\* Includes marine-dredged.

# MINING AND QUARRYING

## Table 7 : Slate - Production, Deliveries and Stocks

Great Britain

Tonnes

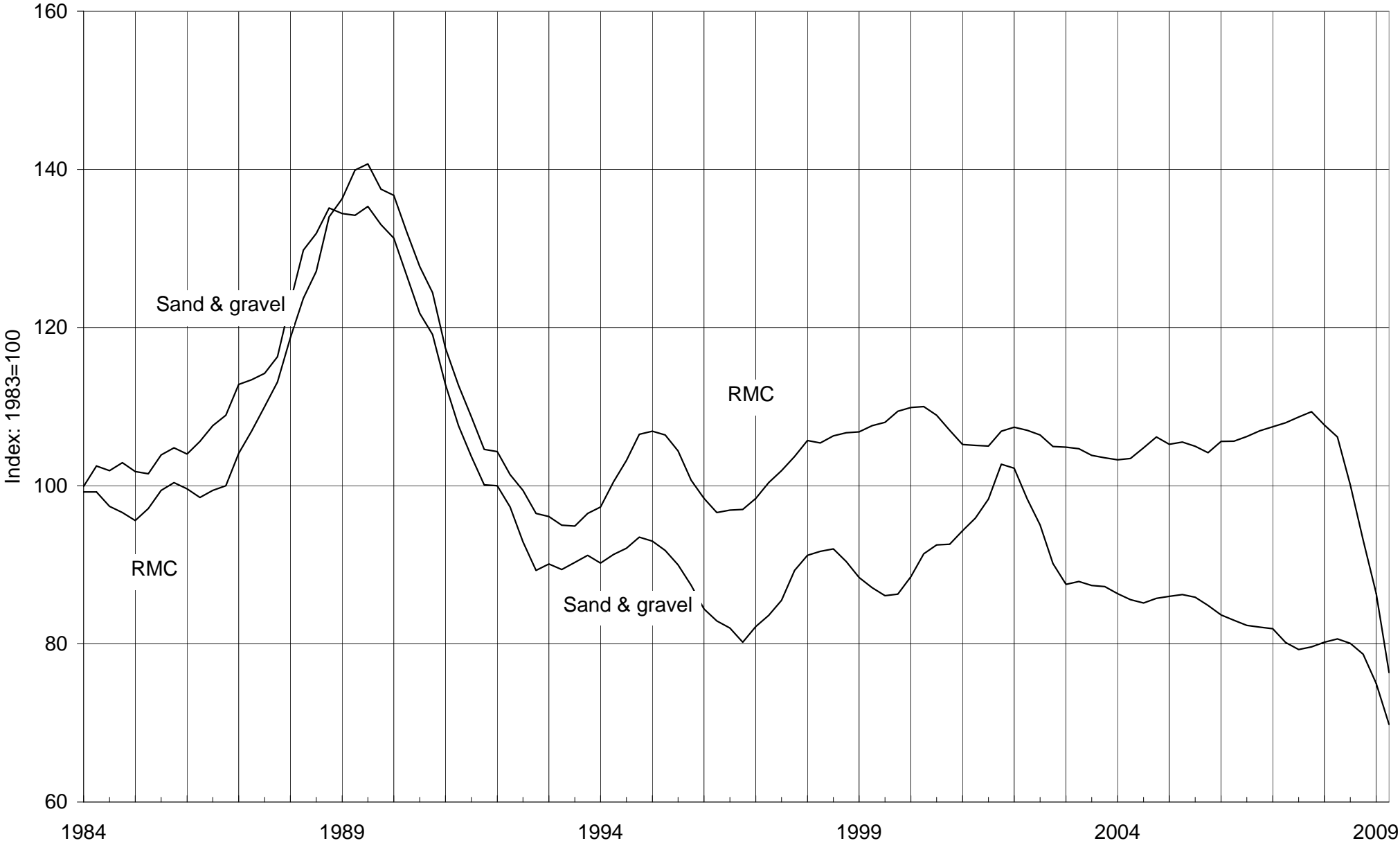
	Production			Deliveries			Stocks (a)		Deliveries	
	Roofing (b)	Other (c)	Powder & Granules	Roofing (b)	Other (c)	Powder & Granules	Roofing (b)	Other (c)	Powder & Fill & Granules	Other Uses
1997	29,732	14,846	61,729	27,714	14,945	60,978	11,311	2,250	6,485	142,787
1998	29,140	17,019	58,740	26,069	17,275	59,205	15,423	1,936	3,911	253,707
1999	28,265	18,733	51,872	33,569	13,740	52,648	10,049	6,829	3,135	190,581
2000	28,815	12,399	44,644	33,341	11,670	44,923	5,519	7,356	2,856	328,547
2001	30,770	14,834	47,521	33,052	13,586	47,588	3,159	8,465	2,799	383,353
2002	32,182	18,348	44,424	32,653	19,069	43,947	2,674	7,850	3,275	498,212
2003	34,471	15,623	29,003	34,700	14,576	29,240	2,477	8,849	3,416	669,818
2004	..	..	..	..	..	..	..	..	..	..
2005	..	..	..	..	..	..	..	..	..	..
2006 (P)	..	61,612	22,967	..	64,037	22,719	..	6,454	4,274	860,395
2007	..	65,260	19,141	..	62,646	19,431	2,563	2,521	3,746	..
2008	..	59,644	16,915	..	58,129	18,402	..	2,749	2,253	..
2001 Q2	7,195	3,634	11,883	8,114	3,736	11,798	4,618	7,709	1,939	124,026
2001 Q3	7,605	3,499	13,375	7,887	3,412	13,345	4,313	7,693	2,343	84,366
2001 Q4	8,622	3,950	11,911	9,762	3,438	11,367	3,159	8,465	2,799	80,557
2002 Q1	8,504	3,554	9,948	8,348	3,756	9,367	3,315	8,281	3,379	94,193
2002 Q2	7,480	6,687	11,471	7,508	6,869	11,876	3,273	8,182	2,974	148,357
2002 Q3	7,496	3,767	11,714	7,699	4,141	12,174	3,070	7,813	2,514	122,840
2002 Q4	8,702	4,340	11,291	9,098	4,303	10,530	2,674	7,850	3,275	132,822
2003 Q1	8,436	3,492	8,077	7,545	3,108	7,887	3,570	8,188	3,417	177,974
2003 Q2	8,635	4,364	7,335	9,028	4,132	7,230	3,177	8,420	3,523	172,954
2003 Q3	8,195	4,120	6,685	8,679	4,196	7,333	2,693	8,344	2,875	151,403
2003 Q4	9,205	3,647	6,906	9,448	3,140	6,790	2,477	8,849	3,416	167,487
2004 Q1	9,397	4,432	7,288	8,379	4,619	7,460	3,469	8,777	3,242	158,552
2004 Q2	9,031	3,596	8,083	10,135	3,499	7,328	2,365	8,874	3,997	154,407
2004 Q3	..	8,029	7,544	..	8,578	7,049	3,954	8,225	4,592	158,333
2004 Q4	..	..	..	..	..	..	..	..	..	..
2005 Q1	..	..	..	..	..	..	..	..	..	..
2005 Q2	..	..	..	..	..	..	..	..	..	..
2005 Q3	..	..	..	..	..	..	..	..	..	..
2005 Q4	..	13,635	7,448	..	6,194	7,635	2,824	10,281	5,347	124,188
2006 Q1	..	11,594	6,575	..	12,879	6,406	3,170	8,967	5,440	195,762
2006 Q2	..	14,804	5,051	..	14,983	5,257	3,079	7,424	3,990	223,696
2006 Q3	..	16,170	5,194	..	16,803	5,094	..	6,792	4,090	251,314
2006 Q4 (P)	..	19,044	6,147	..	19,372	5,962	..	6,454	4,274	189,623
2007 Q1	..	17,787	5,571	..	16,829	5,036	6,984	4,996	4,571	376,876
2007 Q2	..	16,577	4,315	..	14,765	4,875	3,066	5,850	4,011	346,426
2007 Q3	..	16,017	4,672	..	15,475	4,929	2,977	6,391	3,754	..
2007 Q4	..	14,879	4,583	..	15,577	4,591	2,563	2,521	3,746	255,249
2008 Q1	..	18,608	4,282	..	18,071	4,414	..	3,059	3,594	246,495
2008 Q2	..	15,465	4,738	..	14,457	4,862	..	3,801	3,484	..
2008 Q3	..	13,811	3,843	..	13,841	5,511	3,851	2,749	1,816	..
2008 Q4	..	11,760	4,052	..	11,760	3,615	..	2,749	2,253	..
2009 Q1	..	7,370	2,128	5,315	7,688	2,724	..	2,431	1,658	148,722
2009 Q2	5,084	9,124	2,046	5,328	9,319	3,385	4,142	2,236	318	169,661

Note : From Q1 1995, the coverage of 'powder & granules' has been extended to include non-quarry manufacture; and 'crude blocks' are included in 'other' manufacture slate.

- (a) Refers to stocks at the end of the period.
- (b) Consists of all slate tiles which could be used as roofing tiles.
- (c) Consists of all slate products for cladding and decorative uses

# Deliveries of Sand & Gravel and RMC

4-quarter moving average



The data is taken from Tables 4 & 13

## CEMENT

**Table 8 : Cement & Clinker - Production, Deliveries and Stocks**

Great Britain

Thousand tonnes

		<b>Cement</b>				<b>Clinker</b>			
		<b>Production</b>	<b>Deliveries</b>	<b>Imports (into GB)</b>		<b>Cementitious Material</b>		<b>Production</b>	
		<i>of which</i>	<i>(into GB from</i>	<i>by</i>		<i>other</i>	<i>total</i>		
		<b>Exports</b>	<i>GB production)</i>	<i>'Manuf.</i>	<i>Others**</i>				
		<i>(from GB)</i>							
2003		11,215	164	11,072	576	646	2,329	14,623	10,146
2004		11,405	141	11,074	609	825	2,443	14,951	10,402
2005		11,216	110	11,004	306	971	2,385	14,666	10,074
2006		11,469	127	11,221	124	1,089	2,648	15,082	10,069
2007		11,887	74	11,638	255	1,121	2,769	15,783	10,227
2008		10,071	61	9,937	283	1,084	2,432	13,660	8,700
2003	Q2	2,963	40	2,907	174	173	593	3,847	2,735
	Q3	2,889	53	2,910	128	183	646	3,867	2,537
	Q4	2,731	41	2,594	81	160	560	3,395	2,685
2004	Q1	2,623	31	2,683	138	196	554	3,571	2,153
	Q2	3,023	40	2,875	176	220	625	3,896	2,711
	Q3	2,971	36	2,863	185	219	688	3,955	2,841
	Q4	2,788	34	2,653	110	190	576	3,529	2,697
2005	Q1	2,544	21	2,555	104	225	547	3,431	2,193
	Q2	3,024	30	2,986	70	264	632	3,952	2,669
	Q3	2,940	29	2,923	77	264	666	3,930	2,576
	Q4	2,708	30	2,540	55	218	540	3,353	2,636
2006	Q1	2,647	25	2,737	28	269	601	3,635	2,127
	Q2	2,981	30	2,895	32	268	692	3,887	2,622
	Q3	2,990	37	2,917	40	303	732	3,992	2,654
	Q4	2,851	35	2,672	24	249	623	3,568	2,666
2007	Q1	2,678	27	2,779	43	271	643	3,735	2,021
	Q2	3,188	22	3,061	59	297	701	4,117	2,812
	Q3	3,130	9	3,011	84	294	746	4,135	2,751
	Q4	2,891	16	2,787	69	259	681	3,796	2,643
2008	Q1	2,609	18	2,551	88	268 (R)	598 (R)	3,505 (R)	2,267
	Q2	2,803	18	2,816	94	327	682	3,917	2,366
	Q3	2,520	13	2,496	72	263	648	3,445	2,202
	Q4	2,139	12	2,074	29	226	505	2,793	1,865
2009	Q1	1,762	13	1,782	37	256	410	2,485	1,379
2008	May	928	2	914	21	..	..	..	791
	Jun	936	6	901	48	..	..	..	708
	Jul	921	5	924	21	..	..	..	794
	Aug	810	4	744	21	..	..	..	805
	Sep	789	4	828	30	..	..	..	603
	Oct	835	4	854	0	..	..	..	735
	Nov	757	4	702	9	..	..	..	642
	Dec	547	4	518	20	..	..	..	488
2009	Jan	516	4	505	21	..	..	..	280
	Feb	545	4	570	0	..	..	..	532
	Mar	701	5	707	16	..	..	..	567
	Apr	618	0	637 (R)	4	..	..	..	500
	May	711	0	629	8	..	..	..	624

**NB** Where the coverage is for Great Britain, the figures for imports & exports are defined accordingly and have been estimated.

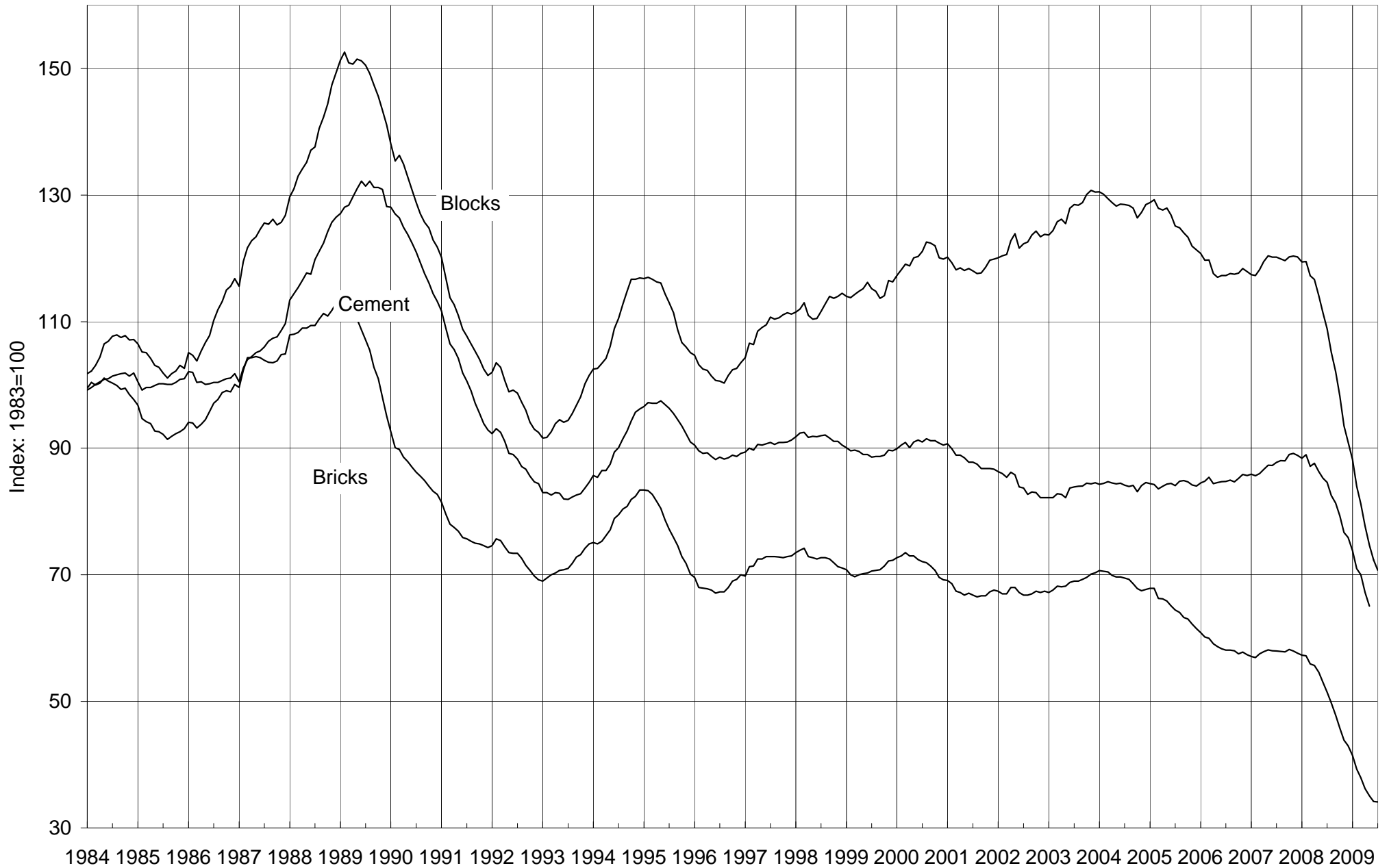
Cementitious material covers cement itself, pulverised fuel ash (pfa) to BS 3892 Part 1 and ground granulated blast-furnace slag (ggbs) to BS 6699

\* Refers to stocks at end of period

\*\* Estimated

# Deliveries of Bricks, Blocks & Cement

12-month moving totals



The data is taken from tables 8, 9 and 11

**Table 9 : Bricks - Production, Deliveries and Stocks**

Great Britain

		<b>Production</b>	<b>Deliveries (from)</b>	<b>Stocks*</b>	<b>Production</b>	<b>Deliveries (from)</b>	<b>Stocks*</b>
<b>(a) Brick Type</b>		<b>All Types</b>			<b>Commons</b>		
2004		2,868	2,830	617	318	322	105
2005		2,748	2,570	791	319	304	117
2006		2,510	2,399	906	304	284	137
2007		2,471	2,409	965	305	291	150
2008		1,929	1,796	1,105	246	242	151
2008	Q2	585	539	1,097	69	73	159
	Q3	474	423	1,147	59	55	162
	Q4	291	333	1,105	42	53	151
2009	Q1	288	289	1,102	50	42	160
	Q2	375	383	1,090	53	58	151
2008	July	167	144	1,120	27	18	167
	August	134	133	1,119	16	18	164
	September	174	146	1,147	16	19	162
	October	136	125	1,158	18	18	162
	November	100	109	1,150	14	16	160
	December	55	99	1,105	10	19	151
2009	January	62	81	1,084	14	11	154
	February	95	81	1,098	21	13	162
	March	132	127	1,102	15	18	160
	April	114	121	1,092	15	20	151
	May	122	126	1,088	16	20	147 (R)
	June	139	137	1,090	22	18	151
	July (P)	107	141	1,057	16	23	144
<b>(b) Material Type</b>		<b>All Materials</b>			<b>Clay#</b>		
2004		2,868	2,830	617	2,707	2,668	600
2005		2,748	2,570	791	2,601	2,419	776
2006		2,510	2,399	906	2,359	2,254	887
2007		2,471	2,409	965	2,312	2,249	947
2008		1,929	1,796	1,105	1,814	1,676	1,093
2008	Q2	585	539	1,097	553	504	1,073
	Q3	474	423	1,147	446	398	1,122
	Q4	291	333	1,105	279	308	1,093
2009	Q1	288	289	1,102	263	273	1,082
	Q2	375	383	1,090	351	358	1,072
2008	July	167	144	1,120	151	136	1,088
	August	134	133	1,119	126	125	1,089
	September	174	146	1,147	170	138	1,122
	October	136	125	1,158	131	118	1,136
	November	100	109	1,150	95	102	1,129
	December	55	99	1,105	52	88	1,093
2009	January	62	81	1,084	55	77	1,070
	February	95	81	1,098	81	75	1,076
	March	132	127	1,102	126	120	1,082
	April	114	121	1,092	108	111	1,076
	May	122	126	1,088	116	117	1,075
	June	139	137	1,090	127	130	1,072
	July (P)	107	141	1,057	..	..	..

\* Refers to stocks at end of period

#Sand-lime bricks are included with clay bricks

Millions

Production	Deliveries (from)	Stocks*	Production	Deliveries (from)	Stocks*		
						<b>(a) Brick Type</b>	
Facings			Engineerings				
2,327	2,290	492	224	218	19	2004	
2,202	2,056	625	227	210	48	2005	
2,013	1,923	710	193	192	58	2006	
1,950	1,906	753	216	212	62	2007	
1,514	1,386	895	170	168	58	2008	
474	418	884	42	49	54	2008	Q2
367	328	924	48	40	61		Q3
219	248	895	30	33	58		Q4
214	226	882	24	21	61	2009	Q1
291	293	880	31	32	60		Q2
125	112	897	15	14	56	2008	July
105	102	900	13	13	55		August
138	114	924	20	13	61		September
105	96	933	14	11	64		October
75	82	926	10	10	63		November
38	69	895	6	11	58		December
43	66	871	5	4	59	2009	January
63	62	873	10	6	63		February
107	98	882	9	11	61		March
90	91	881	9	10	60		April
93	94	879 (R)	12	11	62		May
108	107	880	10	11	60		June
80	105	855	10	12	58		July (P)
						<b>(b) Material Type</b>	
Sand-Lime#			Concrete				
..	..	..	161	162	17	2004	
..	..	..	147	151	15	2005	
..	..	..	150	146	19	2006	
..	..	..	159	160	18	2007	
..	..	..	115	120	11	2008	
..	..	..	32	35	24	2008	Q2
..	..	..	28	25	25		Q3
..	..	..	12	26	11		Q4
..	..	..	25	17	20	2009	Q1
..	..	..	24	26	18		Q2
..	..	..	16	8	32	2008	July
..	..	..	8	8	30		August
..	..	..	4	9	25		September
..	..	..	5	8	23		October
..	..	..	5	6	21		November
..	..	..	2	12	11		December
..	..	..	6	5	13	2009	January
..	..	..	14	6	21		February
..	..	..	5	7	20		March
..	..	..	6	11	15		April
..	..	..	6 (R)	8	12		May
..	..	..	13	7	18		June
..	..	..	..	..	..		July (P)

Table 10 : Brick Production, Deliveries and Stocks by English region, Wales and Scotland

	North East	Yorks & Humber	North West	West Midlands	East Midlands	East of England
<b>(a) Commons</b>				#		#
Production						
2008	3,913	5,737	17,555	14,112	43,310	63,700
2008 Q3	..	1,427	4,300	..	10,232	..
Q4	894	1,280	3,115	..	6,653	..
2009 Q1	..	..	2,850	2,968	6,202	..
Q2	..	1,852	2,998	2,894	9,574	..
2009 June	..	223	1,116	947	3,384	..
Deliveries (from)						
2008	4,468	6,303	18,976	12,864	40,258	55,997
2008 Q3	..	1,632	4,330	3,533	9,898	..
Q4	901	..	3,477	2,099	7,956	..
2009 Q1	..	961	2,004	2,623	7,422	..
Q2	..	1,888	3,150	3,434	8,749	..
2009 June	..	1,013	942	1,348	2,983	..
Stocks *						
2008	2,384	4,045	5,101	4,880	12,913	100,656
2008 Q3	2,391	3,856	5,463	..	14,216	..
Q4	2,384	4,045	5,101	..	12,913	..
2009 Q1	1,971	4,553	5,947	5,225	11,693	..
Q2	1,984	4,487	5,795	..	12,518	..
2009 June	1,984	4,487	5,795	105,105	12,518	..
<b>(b) Facings</b>						
Production						
2008	104,321	101,929	162,136	393,018	262,659	139,145
2008 Q3	29,042	26,285	36,545	97,920	61,311	..
Q4	11,655	15,928	27,800	55,812	34,993	..
2009 Q1	..	..	23,677	60,011	..	..
Q2	..	15,157	25,237	80,023	..	..
2009 June	..	6,201	8,932	30,927	..	..
Deliveries (from)						
2008	86,372	86,059	132,301	360,279	234,781	147,035
2008 Q3	..	22,357	31,029	84,805	51,117	..
Q4	14,617	15,847	23,949	66,572	40,368	..
2009 Q1	..	16,629	19,133	63,601	37,890	..
Q2	..	22,432	23,450	77,160	51,408	..
2009 June	..	8,135	8,136	29,538	..	..
Stocks *						
2008	66,950	69,644	98,774	191,260	175,837	123,011
2008 Q3	..	69,563	94,923	202,020	181,212	..
Q4	..	69,644	98,774	191,260	..	..
2009 Q1	..	61,226	103,318	185,764	..	..
Q2	..	..	105,105	189,013	..	..
2009 June	..	..	105,105	189,013	..	..
<b>(c) Engineering #</b>						
Production						
2008	9,823	32,027	30,377	82,407	3,829	..
2008 Q3	..	..	..	22,935	..	..
Q4	1,842	..	..	16,475	..	..
2009 Q1	..	..	..	..	..	..
Q2	..	..	..	17,752	..	..
2009 June	..	..	..	6,036	..	..
Deliveries (from)						
2008	8,914	30,353	36,214	77,813	576	..
2008 Q3	..	..	..	19,352	..	..
Q4	..	..	..	17,589	..	..
2009 Q1	..	..	..	11,086	..	..
Q2	..	..	..	18,293	..	..
2009 June	..	..	..	6,793	..	..
Stocks *						
2008	1,458	24,514	7,483	12,391	11,924	..
2008 Q3	..	..	..	13,505	..	..
Q4	..	..	..	12,391	..	..
2009 Q1	..	..	..	14,618	..	..
Q2	..	..	..	14,077	..	..
2009 June	..	..	..	14,077	..	..

Note : Regions now use Government Office boundaries

\* Refers to stocks at end of period.

Thousands

South East	South West	England	Wales	Scotland	Great Britain	
#	#					
9,020	10,751	168,098	54,978	22,524	245,600	<b>(a) Commons</b>
..	..	..	..	..	59,331	Production
..	1,811	..	..	4,592	42,209	2008 Q3
..	..	..	..	..	50,382	2009 Q1
..	..	..	..	..	53,075	Q2
..	..	..	..	..	21,719	2009 June
8,826	11,503	159,195	79,980	23,172	242,442	Deliveries (from)
2,191	2,984	..	..	..	54,798	2008 Q3
..	2,864	..	..	..	52,759	Q4
..	..	..	..	..	42,230	2009 Q1
..	..	..	..	..	58,455	Q2
698	..	..	1,991	..	17,670	2009 June
5,203	2,303	137,485	5,968	7,877	151,330	Stocks *
..	3,356	..	..	..	161,842	2008 Q3
5,203	2,303	..	..	..	151,330	Q4
5,344	2,465	..	..	..	159,541	2009 Q1
4,450	1,980	..	..	..	150,767	Q2
4,450	1,980	..	..	..	150,767	2009 June
254,132	58,556	1,475,896	16,262	21,620	1,513,778	<b>(b) Facings</b>
62,377	..	..	..	..	367,281	Production
35,256	..	..	..	..	218,864	2008 Q3
46,652	..	..	..	..	213,576	Q4
58,375	..	..	..	..	291,206	2009 Q1
20,370	..	..	..	..	108,065	Q2
226,025	63,894	1,336,746	23,344	26,015	1,386,105	2009 June
55,894	14,467	..	4,916	..	328,197	Deliveries (from)
42,404	10,832	..	4,337	..	247,685	2008 Q3
41,324	9,536	..	2,761	..	225,556	Q4
52,089	12,518	..	4,012	..	292,708	2009 Q1
19,028	4,817	..	1,282	..	107,479	Q2
115,702	29,180	870,358	18,143	6,907	895,408	2009 June
122,850	33,639	..	..	..	924,217	Stocks *
115,702	29,180	..	..	6,907	895,408	2008 Q3
121,030	31,637	..	..	5,798	881,659	Q4
127,316	30,122	..	..	4,145	879,854	2009 Q1
127,316	30,122	..	..	4,145	879,854	Q2
7,595	..	166,058	780	3,052	169,890	2009 June
..	..	..	..	..	47,719	Production
..	..	..	20	0	29,726	2008 Q3
..	..	..	..	0	24,268	Q4
..	..	..	..	0	30,917	2009 Q1
..	..	..	..	0	9,577	Q2
8,178	..	162,048	794	4,686	167,528	2009 June
..	..	..	..	..	40,424	Deliveries (from)
..	..	..	..	..	32,741	2008 Q3
..	..	..	..	..	21,422	Q4
..	..	..	..	0	32,135	2009 Q1
..	..	..	..	0	11,360	Q2
307	..	58,077	35	21	58,133	2009 June
..	..	..	..	..	61,145	Stocks *
..	..	..	..	..	58,133	2008 Q3
..	..	..	..	..	60,979	Q4
..	..	..	..	..	59,761	2009 Q1
..	..	..	..	..	59,761	Q2
..	..	..	..	..	59,761	2009 June
..	..	..	..	..	59,761	2009 June

# Engineering bricks : South West are included with West Midlands and East of England are included with South East.

**Table 10 (cont'd) : Brick Production, Deliveries and Stocks by English region, Wales and Scotland**

	North East	Yorks & Humber	North West	West Midlands	East Midlands	East of England
<b>(d) All Bricks</b>						
Production						
2007	132,326	157,629	265,283	592,134	431,332	281,548
2008	118,057	139,693	210,068	489,004	309,798	202,934
2008 Q2	..	..	..	..	..	..
Q3	..	..	..	..	..	..
Q4	..	..	32,715	..	42,475	..
2009 Q1	..	..	..	..	..	..
Q2	..	..	..	100,597	..	..
2008 June	..	..	..	..	28,294	..
July	..	..	..	..	..	..
August	..	..	..	33,805	..	..
September	..	..	..	46,521	..	..
October	..	..	..	..	21,991	..
November	..	..	..	24,725	..	..
December	..	..	8,352	13,142	..	..
2009 January	..	..	..	..	..	..
February	..	..	..	26,560	..	..
March	..	..	..	38,816	..	..
April	..	..	..	31,626	..	..
May	..	..	..	31,061	..	..
June	..	..	..	37,910	..	..
Deliveries (from)						
2007	119,420	145,025	269,481	588,736	414,683	255,603
2008	99,754	122,715	187,491	450,347	275,615	203,987
2008 Q2	..	..	..	130,816	..	..
Q3	..	..	..	107,650	..	..
Q4	..	..	..	86,219	..	..
2009 Q1	..	..	..	77,232	..	..
Q2	..	..	..	98,820	..	..
2008 June	..	..	..	40,594	..	..
July	..	..	..	35,661	..	..
August	..	..	..	36,501	..	..
September	..	..	..	35,488	..	..
October	..	..	..	..	..	..
November	..	..	..	..	..	..
December	..	..	..	28,236	..	..
2009 January	..	..	..	22,817	..	..
February	..	..	..	21,152	..	..
March	..	..	..	33,263	..	..
April	..	..	..	30,137	..	..
May	..	..	..	31,004	..	..
June	..	..	..	37,679	..	..
Stocks *						
2007	52,489	81,225	88,781	162,291	168,259	223,854
2008	70,792	98,203	111,358	208,531	200,674	223,667
2008 Q2	..	..	..	..	..	..
Q3	..	..	..	..	..	..
Q4	..	..	..	..	..	..
2009 Q1	..	..	..	..	..	..
Q2	..	..	..	..	..	..
2008 June	..	..	..	..	..	..
July	..	..	..	212,088	..	..
August	..	..	..	209,392	..	..
September	..	..	..	220,425	..	..
October	..	..	..	..	..	..
November	..	..	..	..	..	..
December	..	..	..	..	..	..
2009 January	..	..	..	..	..	..
February	..	..	..	200,047	..	..
March	..	..	..	205,600	..	..
April	..	..	..	..	..	..
May	..	..	..	..	..	..
June	..	..	..	..	..	..

Note : Regions now use Government Office boundaries

\* Refers to stocks at end of period.

## BRICKS

Thousands

South East	South West	England	Wales	Scotland	Great Britain	
						<b>(d) All Bricks</b>
						Production
322,706	98,382	2,281,340	106,045	83,762	2,471,147	2007
270,658	69,840	1,810,052	72,020	47,196	1,929,268	2008
..	..	..	..	..	584,819	2008 Q2
..	..	..	..	..	474,331	Q3
..	..	..	..	..	290,799	Q4
..	..	..	..	..	288,226	2009 Q1
..	..	..	..	..	375,198	Q2
..	..	..	..	..	199,796	2008 June
..	..	..	..	..	166,857	July
..	..	..	..	..	133,696	August
..	..	..	..	..	173,778	September
..	..	..	..	..	136,292	October
..	..	..	..	..	99,860	November
..	..	..	..	..	54,647	December
10,741	..	..	..	..	61,535	2009 January
..	..	..	..	..	94,973	February
24,082	..	..	..	..	131,718	March
..	..	..	..	..	114,288	April
..	..	..	..	..	121,549	May
..	..	..	..	..	139,361	June
						Deliveries (from)
319,493	110,843	2,223,284	99,512	85,800	2,408,596	2007
242,074	76,006	1,657,989	84,213	53,873	1,796,075	2008
..	..	..	..	..	539,296	2008 Q2
..	..	..	..	..	423,419	Q3
..	..	..	..	..	333,185	Q4
..	..	..	..	..	289,208	2009 Q1
..	..	..	..	..	383,298	Q2
..	..	..	..	..	173,498	2008 June
..	..	..	..	..	143,972	July
..	5,439	..	..	..	133,002	August
20,174	5,828	..	..	..	146,445	September
..	..	..	..	..	125,207	October
..	..	..	..	..	108,615	November
..	..	..	..	..	99,363	December
..	..	..	2,388	..	81,171	2009 January
..	..	..	..	..	80,979	February
..	..	..	3,951	..	127,058	March
..	..	..	..	..	121,215	April
..	..	..	..	..	125,564	May
..	..	..	..	..	136,509	June
						Stocks *
93,664	36,738	907,301	36,395	21,482	965,178	2007
121,212	31,483	1,065,920	24,146	14,805	1,104,871	2008
..	..	..	..	..	1,097,334	2008 Q2
..	..	..	..	..	1,147,204	Q3
..	..	..	..	..	1,104,871	Q4
..	..	..	..	..	1,102,179	2009 Q1
..	..	..	..	..	1,090,382	Q2
..	38,533	..	..	..	1,097,334	2008 June
..	38,961	..	..	..	1,120,219	July
..	38,260	..	..	..	1,119,036	August
..	37,050	..	..	..	1,147,204	September
..	37,168	..	..	..	1,158,289	October
..	..	..	..	..	1,149,534	November
..	..	..	..	..	1,104,871	December
..	..	..	..	..	1,083,525	2009 January
..	..	..	..	..	1,097,519	February
126,374	..	..	..	..	1,102,179	March
..	..	..	..	..	1,091,555	April
..	34,381 (R)	..	..	..	1,087,634 (R)	May
..	..	..	..	..	1,090,382	June

# Engineering bricks : South West are included with West Midlands and East of England are included with South East

# CONCRETE PRODUCTS

## Table 11 : Concrete Blocks - Production, Deliveries and Stocks

Great Britain

	All Types			Dense		
	Production	Deliveries (from)	Stocks*	Production	Deliveries (from)	Stocks*
1998	84,662	84,486	8,865	39,439	39,024	4,568
1999	87,767	85,851	9,109	38,439	38,255	4,431
2000	90,219	88,529	9,594	37,629	37,013	4,368
2001	87,922	88,509	8,842	36,598	36,518	4,258
2002	91,474	91,342	9,014	35,744	36,019	3,963
2003	95,675	96,383	8,513	36,775	37,175	3,684
2004	96,256	72,941	10,088	28,880	28,891	3,690
2005	89,997	89,551	9,680	36,188	36,473	3,465
2006	87,510	87,015	..	34,956	34,741	..
2007	89,951	88,746	..	36,686	35,396	..
2008	67,743	67,136	8,920	29,675	29,889	3,498
2004 Q2	24,715	25,175	9,923	9,397	9,813	3,251
Q3	24,537	26,045	9,180	10,183	10,297	3,174
Q4	22,731	21,721	10,088	9,300	8,781	3,690
2005 Q1	23,135	21,992	11,297	9,336	8,979	4,116
Q2	23,828	24,386	9,817	9,635	9,960	3,707
Q3	22,847	23,454	9,123	9,231	9,526	3,463
Q4	20,186	19,720	9,680	7,985	8,008	3,465
2006 Q1	21,155	20,820	..	8,536	8,160	..
Q2	22,435	22,560	..	8,903	8,903	..
Q3	22,615	23,611	..	9,384	9,599	..
Q4	21,305	20,023	..	8,133	8,079	..
2007 Q1	22,014	21,057	..	8,714	8,141	..
Q2	22,532	24,033	..	9,268	9,531	..
Q3	23,248	23,184	..	9,727	9,283	..
Q4	22,157	20,472	..	8,978	8,442	..
2008 Q1	21,131	18,855	11,749	8,564	7,853	5,075
Q2	20,231	19,714	11,977	8,767	8,677	5,107
Q3	14,894	16,309	10,224	7,131	7,576	4,479
Q4	11,487	12,259	8,920	5,214	5,783	3,498
2009 Q1	12,094 (R)	11,649 (R)	9,161 (R)	5,635 (R)	5,438 (R)	3,628 (R)
Q2	13,463	13,191	9,455	6,192	6,032	3,821
2007 July	8,099	7,882	..	3,317	3,128	..
August	7,021	7,739	..	3,097	3,152	..
September	8,128	7,564	..	3,313	3,003	..
October	8,202	8,013	..	3,356	3,317	..
November	8,287	7,531	..	3,383	3,135	..
December	5,668	4,928	..	2,239	1,990	..
2008 January	7,212	5,593	..	2,992	2,340	..
February	6,955	6,665	..	2,863	2,804	..
March	6,965	6,597	11,749	2,709	2,710	5,075
April	7,213	7,000	..	3,087	2,932	..
May	6,385	6,396	..	2,789	2,753	..
June	6,633	6,318	11,977	2,891	2,992	5,107
July	5,687	6,016	..	2,610	2,808	..
August	4,410	5,014	..	2,311	2,397	..
September	4,796	5,279	10,224	2,210	2,370	4,479
October	4,616	5,178	..	2,142	2,453	..
November	4,035	4,057	..	1,841	1,922	..
December	2,836	3,024	8,920	1,231	1,408	3,498
2009 January	3,750 (R)	3,561 (R)	..	1,835 (R)	1,637 (R)	..
February	3,802 (R)	3,540 (R)	..	1,745 (R)	1,687 (R)	..
March	4,543 (R)	4,548 (R)	9,161 (R)	2,055 (R)	2,114 (R)	3,628 (R)
April	4,580	4,447	..	2,077	2,028	..
May	4,158	4,144	..	1,911	1,884	..
June	4,725	4,600	9,455	2,203	2,119	3,821
July (P)	4,665	4,821	..	2,085	2,147	..

\* Refers to stocks at end of period

# CONCRETE PRODUCTS

Thousand square metres

Lightweight			Aerated			
Production	Deliveries (from)	Stocks*	Production	Deliveries (from)	Stocks*	
19,110	18,847	2,191	26,113	26,615	2,106	1998
20,830	20,828	1,858	28,497	26,768	2,820	1999
22,991	22,638	2,169	29,599	28,878	3,058	2000
22,684	22,670	2,207	28,639	29,320	2,377	2001
23,478	23,537	2,188	32,252	31,786	2,863	2002
24,991	25,161	2,107	33,909	34,047	2,721	2003
19,315	19,731	2,271	23,790	23,802	4,127	2004
25,561	25,673	2,173	28,248	27,405	4,042	2005
25,345	25,222	2,303	27,209	27,051	3,622	2006
25,965	25,667	2,434	27,300	27,682	2,906	2007
18,168	18,363	2,149	19,900	18,884	3,273	2008
6,237	6,707	2,077	9,082	8,655	4,596	2004 Q2
6,562	6,802	1,977	7,792	8,429	4,028	Q3
6,516	6,222	2,271	6,916	6,718	4,127	Q4
6,389	6,315	2,365	7,410	6,699	4,816	2005 Q1
6,690	6,935	2,109	7,503	7,491	4,001	Q2
6,623	6,730	2,005	6,993	7,197	3,655	Q3
5,859	5,693	2,173	6,342	6,019	4,042	Q4
6,262	6,179	2,251	6,357	6,481	3,778	2006 Q1
6,125	6,342	2,035	7,406	7,315	3,796	Q2
6,699	6,781	1,967	6,532	7,231	2,907	Q3
6,258	5,920	2,303	6,914	6,024	3,622	Q4
6,418	6,437	2,270	6,883	6,479	3,937	2007 Q1
6,572	6,867	1,946	6,692	7,636	3,056	Q2
6,757	6,616	1,970	6,764	7,286	2,397	Q3
6,217	5,748	2,434	6,962	6,282	2,906	Q4
5,580	5,389	2,633	6,988	5,612	4,041	2008 Q1
5,421	5,405	2,549	6,043	5,632	4,321	Q2
4,110	4,309	2,338	3,653	4,424	3,406	Q3
3,057	3,260	2,149	3,216	3,216	3,273	Q4
3,213 (R)	3,258 (R)	2,181 (R)	3,247	2,953	3,352	2009 Q1
3,498	3,553	2,125	3,773	3,607	3,510	Q2
2,304	2,243	..	2,478	2,511	..	2007 July
2,221	2,257	..	1,703	2,330	..	August
2,232	2,116	..	2,583	2,445	2,397	September
2,389	2,279	..	2,457	2,417	..	October
2,310	2,153	..	2,594	2,243	..	November
1,518	1,316	..	1,911	1,622	2,906	December
1,919	1,617	..	2,301	1,636	..	2008 January
1,771	1,848	..	2,320	2,013	..	February
1,889	1,924	2,633	2,367	1,963	4,041	March
2,041	1,970	..	2,086	2,098	..	April
1,700	1,868	..	1,896	1,775	..	May
1,681	1,567	2,549	2,061	1,759	4,321	June
1,543	1,580	..	1,535	1,627	..	July
1,308	1,320	..	791	1,297	..	August
1,259	1,409	2,338	1,328	1,500	3,406	September
1,275	1,437	..	1,199	1,288	..	October
1,023	1,087	..	1,172	1,048	..	November
760	736	2,149	846	880	3,273	December
890 (R)	998 (R)	..	1,025	927	..	2009 January
954 (R)	967 (R)	..	1,103	887	..	February
1,369 (R)	1,293 (R)	2,181 (R)	1,118	1,140	3,352	March
1,186	1,198	..	1,318	1,221	..	April
1,091	1,124	..	1,155	1,136	..	May
1,221	1,231	2,125	1,301	1,250	3,510	June
1,122	1,258	..	1,458	1,416	..	July (P)

CONCRETE PRODUCTS

**Table 12 : Concrete Blocks : Production, Deliveries and Stocks by English Region, Wales and Scotland**

		North East	Yorks & Humber	North West	West Midlands	East Midlands	East of England
<b>(a) Dense aggregate</b>							
Production							
2008		478	2,818	3,866	1,357	2,996	2,075
2008	Q2	..	785	1,142	..	790	612
	Q3	119	661	900	..	671	..
	Q4	93	603	660	..	620	..
2009	Q1	105	..	711 (R)	..	..	..
	Q2	110	..	766	..	..	..
Deliveries (from)							
2008		497	2,847	3,949	1,375	3,125	2,072
2008	Q2	144	786	1,174	419	830	599
	Q3	..	745	995	..	855	549
	Q4	..	591	760	..	650	347
2009	Q1	112	563	677 (R)	166	..	..
2008	Q2	105	..	788	..	..	..
Stocks *							
2008		..	349	512	..	392	235
2008	Q2	..	463	706	..	608	277
	Q3	..	378	611	..	423	265
	Q4	65	349	512	..	392	..
2009	Q1	58	284	546 (R)	..	447	..
	Q2	63	327	524	..	534	..
<b>(b) Other (1)</b>							
Production							
2008		1,390	8,552	2,161	3,501	4,773	6,244
2008	Q2	..	2,663	643	..	1,321	1,926
	Q3	271	1,599	547	..	1,121	..
	Q4	248	1,299	349	..	887	..
2009	Q1	285	..	353 (R)	..	..	..
	Q2	336	..	409	..	..	..
Deliveries (from)							
2008		1,395	8,553	2,124	2,901	4,809	6,645
2008	Q2	..	2,676	610	..	1,282	2,036
	Q3	..	1,912	521	..	1,222	1,537
	Q4	..	1,315	374	..	1,058	1,026
2009	Q1	289	..	367 (R)	..	..	..
	Q2	309	..	401	..	1,207	..
Stocks *							
2008		129	1,477	352	702	446	750
2008	Q2	203	1,818	356	823	763	1,123
	Q3	..	1,493	377	..	662	852
	Q4	129	1,477	352	..	446	..
2009	Q1	125	1,131	337 (R)	..	487	..
	Q2	151	1,150	345	..	484	..
<b>(c) Total</b>							
Production							
2008		1,868	11,370	6,027	4,858	7,769	8,319
2008	Q2	572	3,448	1,785	1,543	2,111	2,538
	Q3	390	2,260	1,447	881	1,792	1,776
	Q4	341	1,902	1,009	687	1,507	1,207
2009	Q1	390	1,710	1,064 (R)	635	1,788	1,216 (R)
	Q2	446	2,273	1,175	801	1,892	1,348
Deliveries (from)							
2008		1,892	11,400	6,073	4,276	7,934	8,717
2008	Q2	566	3,462	1,784	1,286	2,112	2,635
	Q3	451	2,657	1,516	1,000	2,077	2,086
	Q4	368	1,906	1,134	648	1,708	1,373
2009	Q1	401	1,746	1,044 (R)	581	1,692	1,273 (R)
	Q2	414	2,210	1,189	752	1,809	1,474
Stocks *							
2008		194	1,826	864	789	838	985
2008	Q2	281	2,281	1,062	942	1,371	1,400
	Q3	221	1,871	988	781	1,085	1,117
	Q4	194	1,826	864	789	838	985
2009	Q1	183	1,415	883 (R)	979	934	979 (R)
	Q2	214	1,477	869	1,028	1,018	846

Note : Regions refer to Government Office Regions

\* Refers to stocks at end of period.

# CONCRETE PRODUCTS

Thousand square metres

South East	South West	England	Wales	Scotland	Great Britain		
<b>(a) Dense aggregate</b>							
Production							
2,951	6,537	23,078	3,623	2,975	29,676	2008	
930	1,953	6,771	1,032	964	8,767	2008	Q2
714	1,547	5,469	890	772	7,131		Q3
..	1,091	4,040	726	448	5,214		Q4
..	1,309	4,357 (R)	717	561 (R)	5,635 (R)	2009	Q1
..	1,390	4,906	730	556	6,192		Q2
Deliveries (from)							
2,984	6,433	23,282	3,601	3,006	29,889	2008	
864	1,900	6,716	1,061	900	8,677	2008	Q2
727	1,630	5,914	903	759	7,576		Q3
..	1,277	4,516	731	536	5,783		Q4
..	..	4,242 (R)	702	494 (R)	5,438 (R)	2009	Q1
..	..	4,662	781	589	6,032		Q2
Stocks *							
279	674	2,441	509	396	3,498	2008	
421	1,400	4,072	520	515	5,107	2008	Q2
408	1,298	3,549	514	416	4,479		Q3
279	674	2,593	509	396	3,498		Q4
..	748	2,651 (R)	524	453 (R)	3,628 (R)	2009	Q1
..	853	2,985	517	419	3,821		Q2
<b>(b) Other (1)</b>							
Production							
8,309	2,029	36,959	442	666	38,067	2008	
2,359	663	11,131	117	216	11,464	2008	Q2
1,736	399	7,473	104	186	7,763		Q3
..	152	6,062	112	99	6,273		Q4
..	161 (R)	6,261 (R)	86	112	6,459 (R)	2009	Q1
..	191	7,146	44	81	7,271		Q2
Deliveries (from)							
7,493	2,257	36,177	421	650	37,248	2008	
2,203	628	9,435	103	210	9,748	2008	Q2
1,693	528	8,449	113	169	8,731		Q3
..	326	6,281	89	106	6,476		Q4
..	..	6,046 (R)	67	98	6,211 (R)	2009	Q1
..	..	6,992	75	92	7,159		Q2
Stocks *							
1,157	229	5,242	84	96	5,422	2008	
1,115	519	6,720	69	81	6,870	2008	Q2
973	388	5,581	61	103	5,745		Q3
1,157	229	5,242	84	96	5,422		Q4
..	155	5,324 (R)	103	106 (R)	5,533 (R)	2009	Q1
..	115	5,469	69	96	5,634		Q2
<b>(c) Total</b>							
Production							
11,260	8,566	60,037	4,065	3,641	67,743	2008	
3,289	2,616	17,902	1,149	1,180	20,231	2008	Q2
2,450	1,946	12,942	994	958	14,894		Q3
2,206	1,243	10,102	838	547	11,487		Q4
2,345 (R)	1,470	10,683	803	673 (R)	12,094 (R)	2009	Q1
2,536	1,581	10,683	774	637	13,463		Q2
Deliveries (from)							
10,477	8,690	59,459	4,022	3,656	67,137	2008	
3,067	2,528	17,440	1,164	1,110	19,714	2008	Q2
2,420	2,158	14,365	1,016	928	16,309		Q3
2,057	1,603	10,797	820	642	12,259		Q4
2,084 (R)	1,467	10,288 (R)	769	592 (R)	11,649 (R)	2009	Q1
2,302	1,504	11,654	856	681	13,191		Q2
Stocks *							
1,436	903	7,835	593	492	8,920	2008	
1,536	1,919	10,792	589	596	11,977	2008	Q2
1,381	1,686	9,130	575	519	10,224		Q3
1,436	903	7,835	593	492	8,920		Q4
1,699 (R)	903	7,975 (R)	627	559 (R)	9,161 (R)	2009	Q1
1,934	968	8,354	586	515	9,455		Q2

(1) Lightweight aggregate including aerated concrete blocks where appropriate.

# OTHER BUILDING MATERIALS

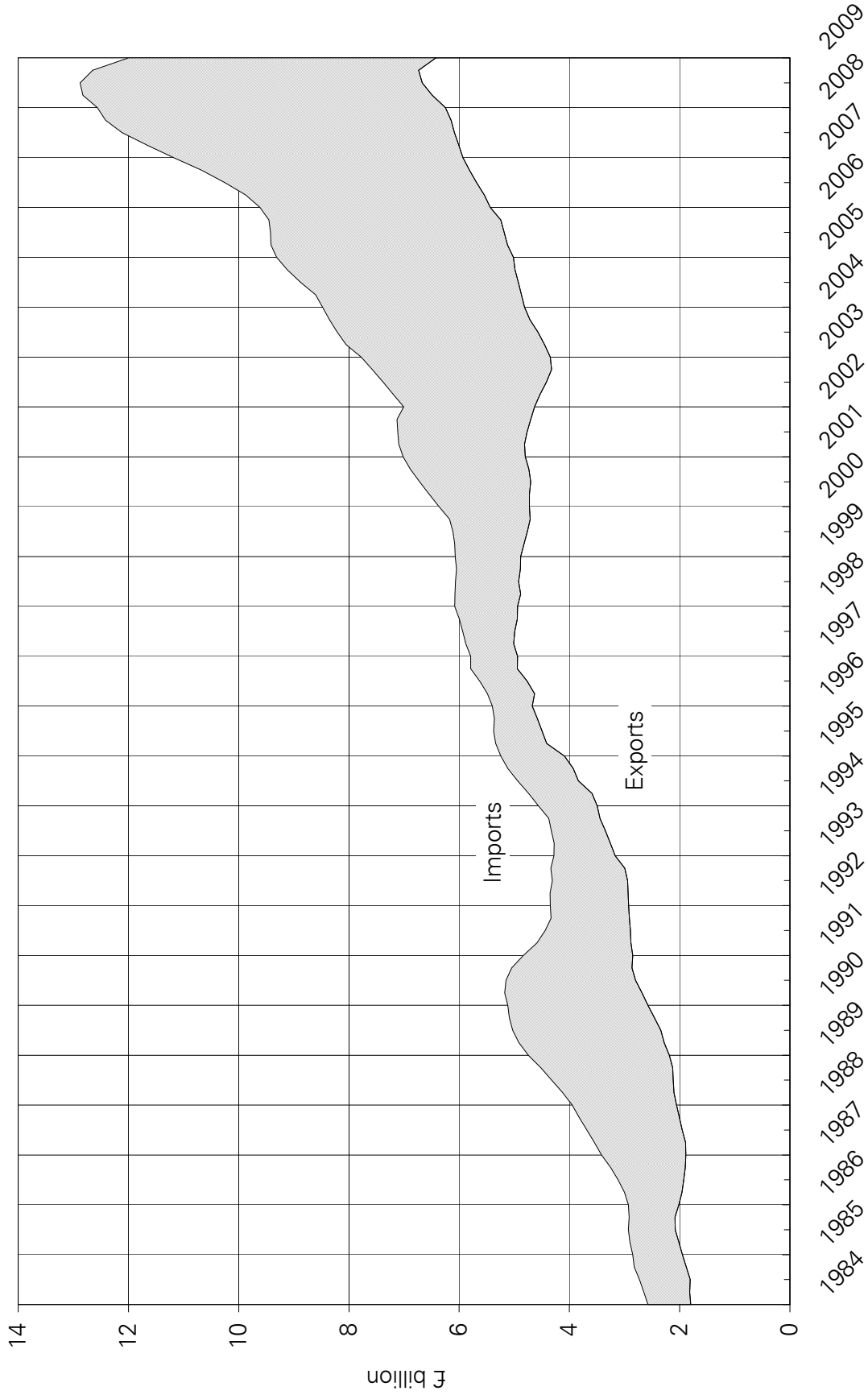
**Table 13 : Other Building Materials**

		Great Britain			United Kingdom
		<b>Concrete Roofing Tiles</b> (Th.sq.m. of roof area covered)			<b>Ready-Mixed Concrete</b> (Th.cu.m.)
		Production	Deliveries	Stocks *	Deliveries
1998		24,981	25,587	3,442	22,983
1999		25,972	25,365	3,543	23,550
2000		26,765	25,047	4,552	23,043
2001		24,825	24,430	4,947	23,008
2002		25,023	24,390	4,586	22,597
2003		21,437	21,401	2,982	22,289
2004		20,739	19,403	2,850	22,856
2005		25,719	24,489	4,902	22,432
2006		23,730	24,118	4,426	23,029
2007		23,551	23,812	3,646	23,548
2008		20,084	19,926	3,899	20,051
2000	Q2	6,818	6,137	5,209	6,048
	Q3	6,406	6,677	4,911	6,062
	Q4	5,979	5,903	4,552	5,248
2001	Q1	6,618	5,762	5,407	5,293
	Q2	6,435	5,957	5,885	6,018
	Q3	6,047	6,907	5,025	6,050
	Q4	5,725	5,803	4,947	5,647
2002	Q1	6,757	5,801	5,332	5,404
	Q2	6,097	6,474	4,954	5,934
	Q3	5,918	6,848	3,654	5,929
	Q4	6,251	5,267	4,586	5,330
2003	Q1	5,821	5,798	4,484	5,388
	Q2	6,280	6,364	4,480	5,892
	Q3	3,917	4,455	2,362	5,750
	Q4	5,418	4,785	2,982	5,259
2004	Q1	5,498	4,294	3,787	5,334
	Q2	5,266	4,800	3,728	5,931
	Q3	4,920	5,134	3,048	6,038
	Q4	5,055	5,175	2,850	5,553
2005	Q1	5,787	4,779	3,732	5,137
	Q2	7,502	6,406	5,818	5,994
	Q3	6,135	7,103	4,850	5,920
	Q4	6,295	6,200	4,902	5,381
2006	Q1	6,792	6,252	5,418	5,445
	Q2	6,002	5,709	5,708	5,995
	Q3	5,448	6,371	4,688	6,047
	Q4	5,489	5,787	4,426	5,542
2007	Q1	6,618	5,629	5,368	5,554
	Q2	5,775	5,728	5,360	6,103
	Q3	5,129	6,541	3,929	6,205
	Q4	6,028	5,914	3,646	5,686
2008	Q1	5,708	5,421	3,922	5,193
	Q2	5,815	5,679	4,488	5,773
	Q3	4,657	4,977	3,840	4,902
	Q4	3,903	3,849	3,899	4,183
2009	Q1	3,664	3,281	4,273	3,583
	Q2	3,055	3,936	3,391	3,637

\* Refers to stocks at the end of the period.

# Comparison of Imports & Exports

4-quarter moving totals



The data is taken from Table 14

# EXTERNAL TRADE

**Table 14 : Value of Overseas Trade in Selected Materials and Components for Constructional Use : Imports (cif) & Exports (fob)**

United Kingdom

Current Prices (£'000)

		2003	2004	2005	2006	2007	2008
<b>All Building Materials &amp; Components</b>	Imports	8,353,619	9,118,176	9,453,468	10,680,840	12,415,881	12,648,124
	Exports	4,717,767	4,987,277	5,246,751	5,813,304	6,147,720	6,735,835
	Balance	(3,635,852)	(4,130,899)	(4,206,717)	(4,867,536)	(6,268,161)	(5,912,289)
<b>All Raw Materials</b>	Imports	114,586	123,992	149,137	180,137	213,589	227,977
	Exports	63,367	79,654	91,180	98,058	124,957	116,617
	Balance	(51,219)	(44,338)	(57,957)	(82,079)	(88,632)	(111,360)
Sand for construction	Imports	2,421	3,756	4,363	5,075	6,454	6,369
	Exports	3,443	4,566	5,499	5,770	7,770	9,372
Crushed Rock : uncoated	Imports	18,724	21,830	28,580	39,307	38,882	43,442
	Exports	46,046	53,914	60,850	65,986	71,989	77,619
Crushed Rock : coated	Imports	6	3	1,172	2,246	2,927	3,206
	Exports	2,891	1,978	4,787	2,622	3,937	3,862
Building Stone : unprocessed	Imports	58,201	74,956	92,059	95,903	115,063	124,395
	Exports	1,831	1,769	1,597	1,777	3,209	2,159
Slate : unprocessed	Imports	7,082	7,431	7,428	10,894	11,590	9,294
	Exports	686	587	703	309	1,579	813
Gypsum & Anhydrite	Imports	8,596	8,040	9,509	8,649	8,626	8,301
	Exports	428	510	547	512	493	899
Bituminous Shale	Imports	19,556	7,975	6,027	18,063	30,045	32,971
	Exports	8,042	16,329	17,196	21,084	35,980	21,894
<b>All Semi-Manufactures</b>	Imports	1,572,077	1,631,987	1,619,893	1,756,079	2,196,076	1,968,786
	Exports	466,234	517,347	575,828	618,574	644,416	651,862
	Balance	(1,105,843)	(1,114,640)	(1,044,065)	(1,137,505)	(1,551,660)	(1,316,924)
Clinker	Imports	20,840	21,684	26,338	40,922	60,554	35,973
	Exports	2,027	1,325	1,801	2,644	1,900	1,271
Sawn Wood > 6mm thick	Imports	744,256	712,779	691,359	727,916	915,899	609,126
	Exports	26,426	26,178	30,939	38,370	32,010	20,783
Densified Wood	Imports	2,247	2,199	2,604	2,782	2,332	1,767
	Exports	405	473	474	422	319	268
Particle Board	Imports	48,410	54,772	58,318	56,174	55,934	45,400
	Exports	12,305	12,320	11,058	16,357	9,377	8,920
Laminated Wood	Imports	190,846	237,481	232,912	250,616	282,912	296,747
	Exports	13,958	18,564	22,720	24,435	23,172	21,938
Fibreboard	Imports	63,182	64,665	58,050	61,430	72,498	60,727
	Exports	19,960	16,456	10,397	12,533	10,574	8,983
Steel for Fabrication	Imports	229,234	273,422	248,987	278,233	463,477	528,834
	Exports	218,993	251,209	270,580	236,427	257,126	301,366
Aluminium for Fabrication	Imports	203,976	189,245	211,703	272,982	277,251	315,463
	Exports	109,558	122,579	152,508	220,652	234,348	216,710
Profiles of Vinyl Chloride	Imports	52,186	47,944	48,667	48,748	41,560	44,169
	Exports	23,149	24,625	24,011	27,350	33,766	28,870
Slag for Construction	Imports	1,963	2,352	4,790	4,625	8,607	11,579
	Exports	834	1,913	2,788	1,747	1,231	1,017
Tar & Bituminous Mixtures	Imports	12,807	21,277	34,133	9,262	12,284	17,422
	Exports	26,423	30,727	37,636	26,008	27,896	27,679
Lime	Imports	2,130	4,167	2,031	2,390	2,767	1,579
	Exports	12,196	10,977	10,915	11,629	12,698	14,059

Current Prices (£'000)

2008 Q1	Q2	Q3	Q4	2009 Q1		
3,122,309	3,424,395	3,245,558	2,855,862	2,472,776	Imports	<b>All Building Materials &amp; Components</b>
1,609,098	1,796,795	1,726,620	1,603,322	1,294,371	Exports	
(1,513,211)	(1,627,600)	(1,518,938)	(1,252,540)	(1,178,405)	Balance	
59,094	68,739	56,807	43,337	31,559	Imports	<b>All Raw Materials</b>
21,478	31,921	33,711	29,507	25,541	Exports	
(37,616)	(36,818)	(23,096)	(13,830)	(6,018)	Balance	
1,543	1,731	1,934	1,161	1,296	Imports	Sand for construction
2,172	2,599	2,141	2,460	2,210	Exports	
10,884	11,298	12,108	9,152	7,100	Imports	Crushed Rock : uncoated
15,429	21,461	20,471	20,258	17,844	Exports	
803	866	852	685	726	Imports	Crushed Rock : coated
478	1,396	702	1,286	641	Exports	
30,010	39,215	32,576	22,594	17,110	Imports	Building Stone : unprocessed
365	657	663	474	402	Exports	
2,719	2,192	2,332	2,051	1,642	Imports	Slate : unprocessed
94	463	136	120	701	Exports	
1,880	2,273	2,558	1,590	1,698	Imports	Gypsum & Anhydrite
165	182	334	218	154	Exports	
11,255	11,165	4,445	6,106	1,987	Imports	Bituminous Shale
2,776	5,162	9,264	4,692	3,588	Exports	
514,710	541,330	499,875	412,871	311,589	Imports	<b>All Semi-Manufactures</b>
161,955	190,729	163,073	136,105	104,864	Exports	
(352,755)	(350,601)	(336,802)	(276,766)	(206,725)	Balance	
13,088	11,312	7,164	4,409	4,800	Imports	Clinker
471	388	276	136	396	Exports	
177,338	186,143	147,456	98,189	104,154	Imports	Sawn Wood > 6mm thick
5,806	6,549	4,865	3,563	4,088	Exports	
343	756	420	248	350	Imports	Densified Wood
42	95	90	41	28	Exports	
13,762	13,361	10,429	7,848	6,435	Imports	Particle Board
2,026	2,692	2,223	1,979	2,082	Exports	
74,460	70,815	78,750	72,722	50,656	Imports	Laminated Wood
6,466	6,212	4,540	4,720	4,830	Exports	
16,646	17,150	15,166	11,765	13,403	Imports	Fibreboard
2,398	2,420	2,134	2,031	2,816	Exports	
126,405	135,798	133,621	133,010	49,580	Imports	Steel for Fabrication
76,721	91,166	73,676	59,803	42,045	Exports	
73,502	83,705	86,425	71,831	65,979	Imports	Aluminium for Fabrication
52,362	62,440	56,617	45,291	36,758	Exports	
11,976	12,452	11,639	8,102	8,515	Imports	Profiles of Vinyl Chloride
7,511	8,031	7,242	6,086	4,337	Exports	
2,312	3,031	4,328	1,908	1,663	Imports	Slag for Construction
411	405	109	92	200	Exports	
4,459	6,372	4,114	2,477	5,774	Imports	Tar & Bituminous Mixtures
4,646	6,007	7,994	9,032	5,182	Exports	
418	435	364	362	281	Imports	Lime
3,096	4,323	3,305	3,335	2,100	Exports	

## EXTERNAL TRADE

**Table 14 : Value of Overseas Trade in Selected Materials and Components for Constructional Use : Imports (cif) & Exports (fob)**

United Kingdom

Current Prices (£'000)

		2003	2004	2005	2006	2007	2008
<b>All Products &amp; Components</b>	Imports	6,666,956	7,362,197	7,684,438	8,744,624	10,006,216	10,451,362
	Exports	4,188,166	4,390,277	4,579,743	5,096,672	5,378,347	5,967,356
	Balance	(2,478,790)	(2,971,920)	(3,104,695)	(3,647,952)	(4,627,869)	(4,484,006)
Wood sleepers (rail & tram)	Imports	5,103	5,981	7,296	6,844	7,907	10,696
	Exports	48	42	905	606	905	1,051
Building Stone : processed	Imports	135,000	152,257	173,779	206,066	243,019	252,120
	Exports	24,744	33,589	39,289	36,148	34,465	38,534
Slate Roofing Tiles	Imports	45,667	51,174	53,197	50,717	58,164	64,975
	Exports	8,268	10,211	11,093	5,479	6,941	6,543
Other Slate Products	Imports	4,403	9,759	10,235	10,641	8,963	8,172
	Exports	2,401	2,050	2,570	2,407	2,348	1,644
Portland Cement	Imports	51,676	63,269	56,472	52,408	59,422	65,716
	Exports	12,773	13,527	21,707	28,178	26,525	13,269
Other Cements	Imports	21,930	23,115	22,409	24,857	24,704	31,102
	Exports	20,891	25,576	23,786	32,358	31,335	29,825
Steel Sheet Piling	Imports	17,348	35,965	47,933	55,911	71,746	78,732
	Exports	33,029	31,360	14,808	18,609	20,205	32,009
Ready-Mixed Concrete	Imports	1	41	3	612	685	825
	Exports	3,784	4,930	9,073	10,116	10,378	12,639
Concrete Reinforcing Bars	Imports	108,833	106,989	121,965	150,492	181,794	208,823
	Exports	14,757	27,612	38,095	38,587	107,236	194,136
Mortars	Imports	4,369	4,927	4,739	5,247	6,225	7,016
	Exports	4,405	4,494	5,566	5,998	5,772	6,410
Clay Bricks	Imports	21,733	23,996	27,577	29,102	35,245	25,877
	Exports	6,909	10,000	12,082	13,541	10,591	7,133
Clay Roofing Tiles	Imports	5,474	8,720	9,485	10,285	10,347	10,004
	Exports	695	1,014	1,449	1,680	304	275
Clay Pipes	Imports	873	778	2,163	601	669	312
	Exports	11,752	9,188	8,446	6,262	5,518	5,775
Other Clay Products	Imports	2,187	4,886	5,240	5,886	5,602	6,670
	Exports	3,854	4,794	14,338	11,123	17,501	18,853
Concrete Blocks & Bricks	Imports	4,246	4,297	5,866	4,544	11,476	8,543
	Exports	20,431	21,242	25,598	26,814	27,319	21,102
Concrete Roofing Tiles	Imports	2,106	2,027	2,408	4,845	4,664	7,194
	Exports	8,752	7,880	7,285	7,857	7,013	3,831
Other Concrete Tiles & Paving	Imports	10,648	9,734	11,753	14,702	16,131	18,178
	Exports	35,251	32,144	35,168	33,692	38,281	34,757
Prefabricated Concrete Products	Imports	11,316	15,093	20,288	22,439	26,763	33,440
	Exports	12,117	25,010	29,374	28,936	23,241	19,042
Concrete Pipes	Imports	7,629	16,918	21,365	27,303	32,767	36,734
	Exports	27,068	28,674	25,566	27,010	32,536	31,413

Current Prices (£'000)

2008 Q1	Q2	Q3	Q4	2009 Q1		
2,548,505	2,814,325	2,688,877	2,399,655	2,129,628	Imports	<b>All Products &amp; Components</b>
1,425,664	1,574,145	1,529,837	1,437,710	1,163,966	Exports	
(1,122,841)	(1,240,180)	(1,159,040)	(961,945)	(965,662)	Balance	
2,679	4,540	2,611	866	697	Imports	Wood sleepers (rail & tram)
340	133	160	418	16	Exports	
60,901	71,285	62,317	57,617	46,243	Imports	Building Stone : processed
8,133	12,649	10,235	7,517	10,109	Exports	
16,873	15,704	19,471	12,927	13,913	Imports	Slate Roofing Tiles
2,161	1,444	1,640	1,298	2,983	Exports	
2,757	2,131	1,654	1,630	1,310	Imports	Other Slate Products
441	387	466	350	190	Exports	
14,717	21,155	17,550	12,294	14,074	Imports	Portland Cement
2,851	6,593	2,184	1,641	1,132	Exports	
7,326	5,192	7,513	11,071	9,372	Imports	Other Cements
7,880	8,341	7,223	6,381	5,582	Exports	
18,950	21,568	18,370	19,844	11,526	Imports	Steel Sheet Piling
5,973	9,982	8,526	7,528	8,318	Exports	
190	155	149	331	101	Imports	Ready-Mixed Concrete
2,137	3,507	3,713	3,282	1,088	Exports	
43,335	52,986	77,218	35,284	26,304	Imports	Concrete Reinforcing Bars
27,914	42,877	73,808	49,537	16,310	Exports	
2,072	1,627	1,735	1,582	1,855	Imports	Mortars
1,601	1,682	1,509	1,618	1,211	Exports	
7,091	7,773	6,289	4,724	4,744	Imports	Clay Bricks
1,974	1,954	2,090	1,115	961	Exports	
2,894	2,642	2,309	2,159	1,536	Imports	Clay Roofing Tiles
73	49	104	49	103	Exports	
191	64	4	53	73	Imports	Clay Pipes
1,268	1,638	1,409	1,460	1,048	Exports	
1,514	2,063	1,783	1,310	536	Imports	Other Clay Products
7,507	4,513	5,490	1,343	966	Exports	
2,595	2,139	2,246	1,563	1,304	Imports	Concrete Blocks & Bricks
4,555	6,872	5,867	3,808	2,918	Exports	
2,297	1,546	1,857	1,494	1,925	Imports	Concrete Roofing Tiles
786	1,403	1,064	578	644	Exports	
6,339	5,045	3,889	2,905	2,857	Imports	Other Concrete Tiles & Paving
7,971	11,280	9,168	6,338	4,477	Exports	
8,634	9,651	8,052	7,103	4,377	Imports	Prefabricated Concrete Products
4,894	5,504	5,364	3,280	2,103	Exports	
8,111	10,281	9,883	8,459	9,071	Imports	Concrete Pipes
8,022	8,660	8,103	6,628	5,900	Exports	

## EXTERNAL TRADE

**Table 14 : Value of Overseas Trade in Selected Materials and Components for Constructional Use : Imports (cif) & Exports (fob)**

United Kingdom

Current Prices (£'000)

		2003	2004	2005	2006	2007	2008
<b>Products &amp; Components (continued)</b>							
Structural Units (steel)	Imports	229,855	275,573	308,125	361,685	526,139	561,428
	Exports	384,989	366,258	401,830	445,236	498,331	603,718
Structural Units (aluminium)	Imports	178,048	130,037	147,050	149,757	220,258	250,896
	Exports	63,415	72,732	72,730	81,708	81,777	98,289
Steel Tubes & Hollow Sections	Imports	69,092	89,647	94,193	117,181	142,421	157,405
	Exports	85,884	74,805	93,135	109,871	114,756	132,523
Bituminous Roofing Felt	Imports	16,314	17,279	19,559	21,082	25,626	30,202
	Exports	5,231	5,209	5,438	5,755	5,406	3,508
Other Asphalt products	Imports	7,240	8,476	9,488	8,449	9,965	9,999
	Exports	15,229	13,017	12,815	16,756	16,768	18,030
Mineral Insulating Materials	Imports	64,287	70,064	81,458	84,002	81,850	78,937
	Exports	78,231	99,812	115,427	137,321	139,360	132,696
Glass Fibre	Imports	1,977	1,782	1,241	2,666	1,482	1,185
	Exports	1,267	671	1,271	820	1,188	2,831
Fibre Cement Products	Imports	18,308	20,389	22,168	24,343	31,344	28,008
	Exports	9,040	6,578	7,402	6,618	6,667	7,680
Building Plasters	Imports	6,003	4,475	6,740	5,725	6,171	6,854
	Exports	2,946	5,263	6,324	8,121	7,623	8,078
Plasterboard	Imports	32,538	45,399	37,787	34,275	30,302	16,045
	Exports	13,411	19,103	16,724	24,262	19,797	18,397
Copper Pipes	Imports	117,993	153,381	152,310	212,455	217,861	229,355
	Exports	112,436	109,661	124,772	167,831	153,412	171,400
Lead Pipes & Fittings	Imports	33	113	115	168	93	17
	Exports	58	297	1,768	204	48	625
Zinc Pipes & Fittings	Imports	81	207	179	328	1,154	913
	Exports	2,909	4,231	3,989	5,446	7,166	6,016
Other Zinc Building Products	Imports	7,596	11,056	11,992	14,480	12,447	13,069
	Exports	12,155	15,822	21,052	23,873	20,945	21,958
Plastic Pipes	Imports	69,465	78,305	84,353	100,144	114,727	133,579
	Exports	141,043	152,224	170,733	187,793	205,332	211,692
Other Plastic Building Products	Imports	87,529	105,632	116,565	133,409	148,828	149,016
	Exports	84,704	93,460	99,630	100,498	115,008	117,420
Builders Ironmongery	Imports	355,324	377,439	389,610	452,335	498,372	505,655
	Exports	135,144	134,198	130,262	155,064	157,425	165,715
Nails & Screws	Imports	47,431	52,292	48,017	51,836	59,853	61,028
	Exports	9,401	10,480	14,171	15,229	12,553	12,851
Mastics, Putty	Imports	114,733	119,705	126,302	138,983	148,599	151,830
	Exports	84,926	84,732	82,529	95,347	103,998	119,201
Paints & Varnishes	Imports	286,155	292,933	297,691	315,962	339,581	354,605
	Exports	396,953	398,005	421,283	436,044	442,126	537,452

Current Prices (£'000)

2008 Q1	Q2	Q3	Q4	2009 Q1	Products & Components (continued)	
124,664	182,326	136,647	117,791	98,445	Imports	Structural Units (steel)
146,785	153,848	153,728	149,357	115,340	Exports	
59,072	62,024	52,596	77,204	82,398	Imports	Structural Units (aluminium)
27,680	20,884	20,979	28,746	13,207	Exports	
40,042	41,386	41,281	34,696	30,453	Imports	Steel Tubes & Hollow Sections
31,657	34,637	35,730	30,499	22,029	Exports	
7,131	7,757	8,184	7,130	6,887	Imports	Bituminous Roofing Felt
749	906	1,087	766	716	Exports	
2,117	2,522	3,003	2,357	2,308	Imports	Other Asphalt products
3,649	4,228	4,759	5,394	3,844	Exports	
21,025	21,054	20,234	16,624	17,378	Imports	Mineral Insulating Materials
32,827	34,844	35,058	29,967	25,786	Exports	
133	323	338	391	109	Imports	Glass Fibre
1,011	523	401	896	177	Exports	
7,444	7,830	7,016	5,718	6,863	Imports	Fibre Cement Products
1,826	1,840	2,383	1,631	955	Exports	
1,348	2,048	1,937	1,521	2,376	Imports	Building Plasters
1,694	2,507	2,252	1,625	1,977	Exports	
4,029	5,262	3,382	3,372	3,699	Imports	Plasterboard
4,505	5,145	5,165	3,582	4,667	Exports	
61,431	65,727	58,503	43,694	39,942	Imports	Copper Pipes
43,412	46,075	43,909	38,004	26,526	Exports	
0	1	12	4	2	Imports	Lead Pipes & Fittings
23	1	585	16	37	Exports	
283	240	234	156	111	Imports	Zinc Pipes & Fittings
1,758	1,828	1,516	914	817	Exports	
3,557	3,467	2,975	3,070	3,264	Imports	Other Zinc Building Products
6,006	6,477	5,145	4,330	5,267	Exports	
30,254	44,040	31,906	27,379	27,450	Imports	Plastic Pipes
58,671	55,117	49,300	48,604	37,352	Exports	
39,471	40,472	37,468	31,605	33,909	Imports	Other Plastic Building Products
29,082	32,688	30,085	25,565	22,052	Exports	
132,308	132,411	129,587	111,349	68,838	Imports	Builders Ironmongery
40,211	44,183	41,509	39,812	23,661	Exports	
15,621	17,513	13,562	14,332	12,297	Imports	Nails & Screws
2,894	3,712	3,725	2,520	1,901	Exports	
38,085	41,648	38,722	33,375	30,884	Imports	Mastics, Putty
27,023	32,980	32,850	26,348	25,568	Exports	
85,999	94,185	96,794	77,627	74,592	Imports	Paints & Varnishes
111,918	151,773	148,048	125,713	115,612	Exports	

## EXTERNAL TRADE

**Table 14 : Value of Overseas Trade in Selected Materials and Components for Constructional Use : Imports (cif) & Exports (fob)**

United Kingdom

Current Prices (£'000)

		2003	2004	2005	2006	2007	2008
<b>Products &amp; Components (continued)</b>							
Unglazed Ceramic Tiles	Imports	33,515	34,386	48,736	54,270	64,691	71,050
	Exports	2,808	1,791	2,776	2,476	4,419	3,543
Glazed Ceramic Tiles	Imports	299,118	298,832	285,488	285,081	290,867	278,913
	Exports	13,441	16,168	17,216	21,444	20,555	17,757
Ceramic Sanitaryware	Imports	123,692	154,229	157,864	173,687	181,603	174,165
	Exports	36,213	44,780	48,004	54,232	58,228	53,491
Plastic Sanitaryware	Imports	69,624	91,025	98,663	105,586	126,471	119,993
	Exports	62,634	58,709	68,603	78,718	78,812	83,909
Metal Sanitaryware	Imports	105,958	108,114	110,304	123,202	139,821	142,439
	Exports	33,753	38,497	34,553	32,213	33,511	33,166
Flat Glass	Imports	68,138	58,092	53,410	55,900	71,800	60,866
	Exports	41,547	44,772	51,502	67,141	83,174	107,783
Other Glass Products	Imports	63,831	69,646	67,274	78,695	76,235	97,582
	Exports	29,438	30,008	25,895	31,631	37,712	40,297
Wood Veneers	Imports	37,263	34,826	35,328	40,586	38,516	39,327
	Exports	9,127	8,076	9,664	10,607	10,243	10,040
Wood Mouldings	Imports	58,579	67,497	69,452	79,514	73,907	64,550
	Exports	16,131	20,097	18,922	20,362	18,289	11,174
Wood Block Flooring	Imports	104,888	119,103	117,317	132,977	125,112	125,136
	Exports	10,487	9,312	8,086	8,448	5,464	6,128
Other Builder's Woodwork	Imports	64,807	70,930	78,356	93,870	109,022	100,885
	Exports	10,711	23,091	13,298	21,562	19,079	15,908
Windows (wood)	Imports	54,847	66,150	66,201	71,679	84,256	121,001
	Exports	23,010	21,961	5,693	9,466	12,879	10,219
Doors (wood)	Imports	167,738	169,146	164,036	191,637	205,159	209,058
	Exports	25,276	27,176	29,900	38,546	37,008	26,862
Doors & Windows (steel)	Imports	51,052	53,807	57,661	54,493	40,294	39,123
	Exports	21,455	18,376	20,146	21,231	25,825	26,301
Doors & Windows (aluminium)	Imports	69,492	57,010	61,542	68,235	65,654	63,960
	Exports	23,157	23,217	27,785	35,883	32,688	25,474
Doors & Windows (plastic)	Imports	27,110	25,981	27,227	41,045	39,460	39,206
	Exports	47,859	51,774	63,205	68,641	63,218	56,119
Cork Tiles	Imports	2,601	2,658	2,043	2,540	2,877	2,257
	Exports	1,199	1,885	1,662	2,878	1,611	1,641
Linoleum Floor Coverings	Imports	162,338	179,118	179,151	213,518	242,787	256,259
	Exports	180,172	172,688	178,385	188,215	195,735	224,846
Wallpaper	Imports	47,542	43,859	39,129	40,998	58,963	58,652
	Exports	71,002	56,789	55,456	54,868	67,165	73,505
Textile Wall Coverings	Imports	1,408	2,140	1,313	1,187	1,573	2,833
	Exports	1,159	678	484	373	598	499

Current Prices (£'000)

2008 Q1	Q2	Q3	Q4	2009 Q1	Products & Components (continued)	
17,740	18,803	18,233	16,274	14,830	Imports	Unglazed Ceramic Tiles
946	940	947	710	592	Exports	
77,578	78,608	63,790	58,937	58,441	Imports	Glazed Ceramic Tiles
4,823	4,412	4,331	4,191	3,949	Exports	
48,466	47,334	41,566	36,799	34,921	Imports	Ceramic Sanitaryware
13,221	13,969	13,915	12,386	9,140	Exports	
30,079	31,455	30,599	27,860	27,249	Imports	Plastic Sanitaryware
21,050	23,100	19,244	20,515	20,297	Exports	
37,927	36,929	37,237	30,346	27,955	Imports	Metal Sanitaryware
8,894	8,751	7,512	8,009	7,365	Exports	
14,808	14,723	15,719	15,616	13,089	Imports	Flat Glass
23,459	32,203	26,840	25,281	16,819	Exports	
21,139	24,282	25,324	26,837	20,285	Imports	Other Glass Products
10,254	9,539	9,847	10,657	7,152	Exports	
11,542	10,330	9,546	7,909	6,293	Imports	Wood Veneers
2,186	2,690	2,895	2,269	998	Exports	
19,527	17,935	15,669	11,419	13,943	Imports	Wood Mouldings
3,342	3,312	2,646	1,874	1,898	Exports	
34,494	34,990	30,614	25,038	23,118	Imports	Wood Block Flooring
1,466	1,637	1,560	1,465	1,887	Exports	
22,977	28,857	26,930	22,121	17,760	Imports	Other Builder's Woodwork
4,266	4,495	3,935	3,212	2,613	Exports	
28,737	33,164	31,448	27,652	25,939	Imports	Windows (wood)
2,600	3,278	2,254	2,087	2,970	Exports	
54,673	55,036	50,483	48,866	47,824	Imports	Doors (wood)
7,527	7,392	6,270	5,673	4,645	Exports	
8,859	9,616	11,101	9,547	9,212	Imports	Doors & Windows (steel)
6,922	7,576	6,426	5,377	5,327	Exports	
14,020	16,635	18,934	14,371	15,811	Imports	Doors & Windows (aluminium)
7,079	7,393	6,207	4,795	4,843	Exports	
10,487	11,249	9,243	8,227	9,609	Imports	Doors & Windows (plastic)
12,852	14,527	14,284	14,456	9,232	Exports	
579	549	608	521	409	Imports	Cork Tiles
328	380	579	354	391	Exports	
64,559	65,939	63,567	62,194	59,851	Imports	Linoleum Floor Coverings
52,007	60,310	58,135	54,394	51,524	Exports	
15,352	16,113	12,411	14,776	13,554	Imports	Wallpaper
17,059	19,736	18,465	18,245	15,793	Exports	
751	726	641	715	527	Imports	Textile Wall Coverings
244	84	89	82	55	Exports	

EXTERNAL TRADE

**Table 14 : Value of Overseas Trade in Selected Materials and Components for Constructional Use : Imports (cif) & Exports (fob)**

United Kingdom

Current Prices (£'000)

		2003	2004	2005	2006	2007	2008
<b>Products &amp; Components (continued)</b>							
Fitted Kitchens (assembled)	Imports	66,141	72,546	88,219	98,937	144,018	170,568
	Exports	22,753	28,543	38,899	34,261	35,322	24,164
Prefabricated Buildings (wood)	Imports	17,755	17,118	18,618	21,986	49,086	40,328
	Exports	28,363	10,276	14,075	22,603	27,807	15,170
Prefabricated Buildings (steel)	Imports	33,516	13,633	25,458	30,281	30,084	41,518
	Exports	33,369	16,629	12,814	42,880	27,464	46,140
Prefabricated Buildings (other)	Imports	30,775	21,723	52,602	67,587	73,414	74,138
	Exports	36,892	67,465	90,502	45,996	35,795	72,309
Mobile Homes	Imports	..	8,266	8,300	7,196	7,113	6,574
	Exports	..	7,752	12,000	8,573	11,291	7,249
Taps & Valves	Imports	193,386	218,022	209,659	265,657	277,803	315,375
	Exports	37,812	42,383	51,134	62,344	72,708	60,597
Pumps (circulating)	Imports	13,191	16,078	20,706	25,544	24,273	21,668
	Exports	19,429	22,176	24,986	28,408	27,131	27,964
Central Heating Boilers	Imports	371,004	386,508	433,200	473,692	493,840	546,791
	Exports	62,531	66,455	72,126	76,578	70,581	80,425
Radiators	Imports	156,028	185,745	173,673	193,948	197,513	184,137
	Exports	18,320	24,109	30,597	37,707	46,938	57,877
Water Heaters	Imports	58,673	63,348	64,514	75,238	88,897	105,725
	Exports	56,723	60,170	70,226	67,902	64,471	86,254
Space Heaters	Imports	121,118	135,387	139,190	120,030	107,581	110,055
	Exports	48,184	48,192	47,605	39,930	37,312	35,118
Fan Systems	Imports	122,017	132,616	134,485	152,829	198,750	161,756
	Exports	78,836	86,463	94,318	132,081	94,651	114,008
Air Conditioning Equipment	Imports	330,246	389,070	360,514	379,150	514,454	643,951
	Exports	191,466	255,124	218,235	201,257	231,145	268,083
Air Purifying Equipment	Imports	28,647	30,072	37,950	31,440	29,827	41,324
	Exports	99,171	101,710	108,350	114,378	120,707	137,836
Hand Driers	Imports	2,916	3,307	3,887	5,009	4,057	7,628
	Exports	1,238	1,905	1,177	1,036	1,648	1,017
Meters	Imports	18,767	17,875	20,971	25,666	24,501	24,152
	Exports	22,270	23,191	22,700	25,024	26,215	47,988
Plugs & Sockets	Imports	155,233	170,877	183,550	232,658	231,664	269,336
	Exports	104,404	119,250	106,743	169,345	148,672	153,168
Electrical Wires	Imports	640,997	770,132	789,156	1,028,495	1,303,906	1,236,748
	Exports	420,550	419,339	392,062	458,568	521,508	554,581
Electrical Insulators	Imports	26,827	33,557	32,793	37,729	30,478	34,957
	Exports	70,687	54,632	38,222	28,858	33,830	32,549
Lamps & Fittings	Imports	321,327	354,391	354,174	392,782	449,230	463,199
	Exports	155,404	168,398	179,800	195,049	221,180	236,891
Fire & Security Alarms	Imports	97,101	131,901	140,511	153,055	144,891	139,950
	Exports	103,585	118,660	130,795	150,929	154,519	182,505
Lifts & Escalators	Imports	77,203	89,366	112,695	104,250	118,401	129,069
	Exports	24,301	17,717	11,664	24,833	43,143	28,478

Current Prices (£'000)

2008 Q1	Q2	Q3	Q4	2009 Q1	Products & Components (continued)	
46,511	46,202	43,117	34,738	33,845	Imports	Fitted Kitchens (assembled)
6,355	6,845	6,062	4,902	4,180	Exports	
10,634	12,840	8,863	7,991	9,851	Imports	Prefabricated Buildings (wood)
2,949	3,746	5,386	3,089	3,262	Exports	
11,332	12,730	8,957	8,499	10,118	Imports	Prefabricated Buildings (steel)
9,003	16,853	12,061	8,223	8,014	Exports	
15,932	28,062	17,485	12,659	14,558	Imports	Prefabricated Buildings (other)
17,206	13,044	14,522	27,537	6,288	Exports	
1,704	2,699	1,250	921	1,143	Imports	Mobile Homes
1,682	1,177	2,736	1,654	1,971	Exports	
75,606	88,118	82,136	69,515	59,669	Imports	Taps & Valves
15,248	15,449	16,367	13,533	15,534	Exports	
5,886	5,686	5,254	4,842	3,002	Imports	Pumps (circulating)
6,057	5,794	7,760	8,353	1,620	Exports	
131,257	131,756	132,121	151,657	135,677	Imports	Central Heating Boilers
21,905	21,507	18,503	18,510	35,082	Exports	
46,679	49,182	42,671	45,605	46,712	Imports	Radiators
16,929	16,629	13,429	10,890	10,913	Exports	
22,751	26,666	28,222	28,086	30,224	Imports	Water Heaters
17,830	21,061	24,863	22,500	17,737	Exports	
21,836	20,376	30,547	37,296	23,525	Imports	Space Heaters
8,293	7,545	8,928	10,352	7,625	Exports	
39,598	48,129	38,802	35,227	29,649	Imports	Fan Systems
23,198	29,675	29,066	32,069	24,409	Exports	
126,621	171,917	192,210	153,203	121,927	Imports	Air Conditioning Equipment
63,290	73,876	64,943	65,974	55,693	Exports	
7,957	10,488	11,158	11,721	12,356	Imports	Air Purifying Equipment
33,264	41,732	30,850	31,990	24,844	Exports	
1,284	1,133	2,092	3,119	1,624	Imports	Hand Driers
141	380	175	321	348	Exports	
4,670	5,598	6,743	7,141	5,618	Imports	Meters
8,474	9,802	11,570	18,142	10,214	Exports	
66,718	69,490	68,241	64,887	62,644	Imports	Plugs & Sockets
38,869	40,156	38,193	35,950	33,900	Exports	
306,450	332,957	317,836	279,505	210,223	Imports	Electrical Wires
149,835	145,000	131,367	128,379	98,913	Exports	
7,450	9,776	8,374	9,357	7,992	Imports	Electrical Insulators
8,119	8,813	7,412	8,205	6,920	Exports	
114,959	107,698	123,356	117,186	107,495	Imports	Lamps & Fittings
57,472	57,690	62,034	59,695	51,877	Exports	
34,344	34,249	37,679	33,678	35,683	Imports	Fire & Security Alarms
41,651	41,414	43,384	56,056	58,399	Exports	
30,552	35,515	38,821	24,181	31,448	Imports	Lifts & Escalators
7,508	6,572	7,503	6,895	5,185	Exports	

© Crown copyright 2009.

Published under licence from the Controller of Her Majesty's Stationery Office.

Applications for reproductions should be made in writing to :-

The Copyright Unit, Her Majesty's Stationery Office, St. Clements House,  
2-16 Colegate, Norwich NR3 1BQ

September 2009

URN 09 / 313h

ISSN 0264-6188