

Monthly Statistics of Building Materials and Components

Commentary

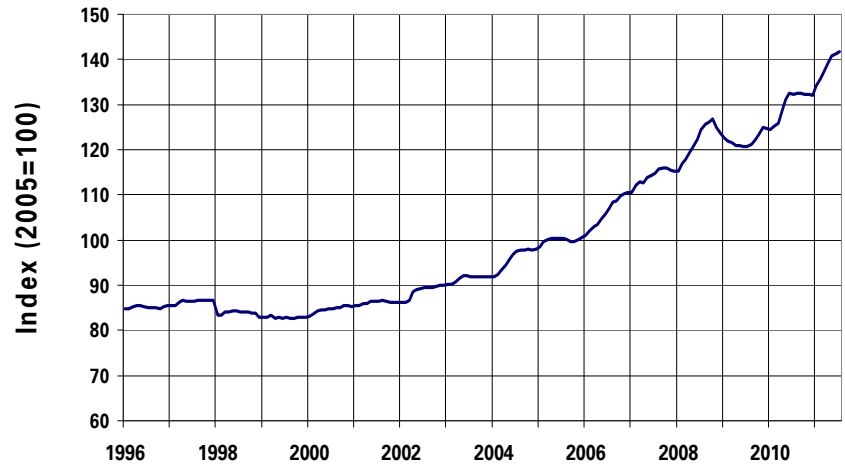
August 2011

Construction Price Indices

Provisional data show that the 'All Work' Construction Material Price Index continued its upward trend in July, rising for the seventh consecutive month. In July, the index was 0.4% higher than in June and 7.1% higher than a year earlier (year on year).

The recent upward movement in the 'All Work' price index reflects increases in all of its main sub-indices. Material prices for 'New Housing', 'Other New Work' and 'Repair and Maintenance' have all recorded consecutive monthly increases since January 2011, suggesting a build-up of inflationary pressures.

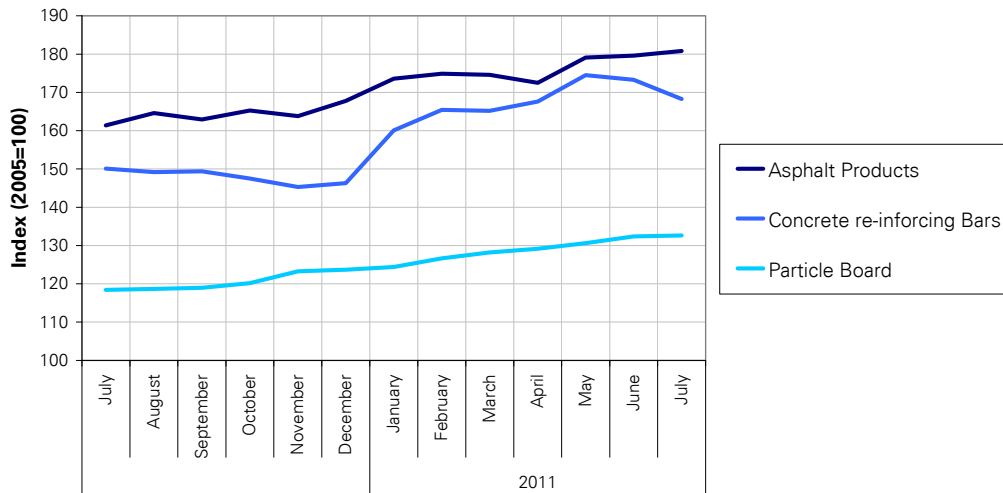
Construction Material Price Indices - All Work



This data is taken from Table 1

The largest increases for the selected construction price indices over the last year have been: Concrete Reinforcing Bars (up 12.1%), Asphalt Products (up 12.0%) and Particle Board (up 12.0%).

Price Indices

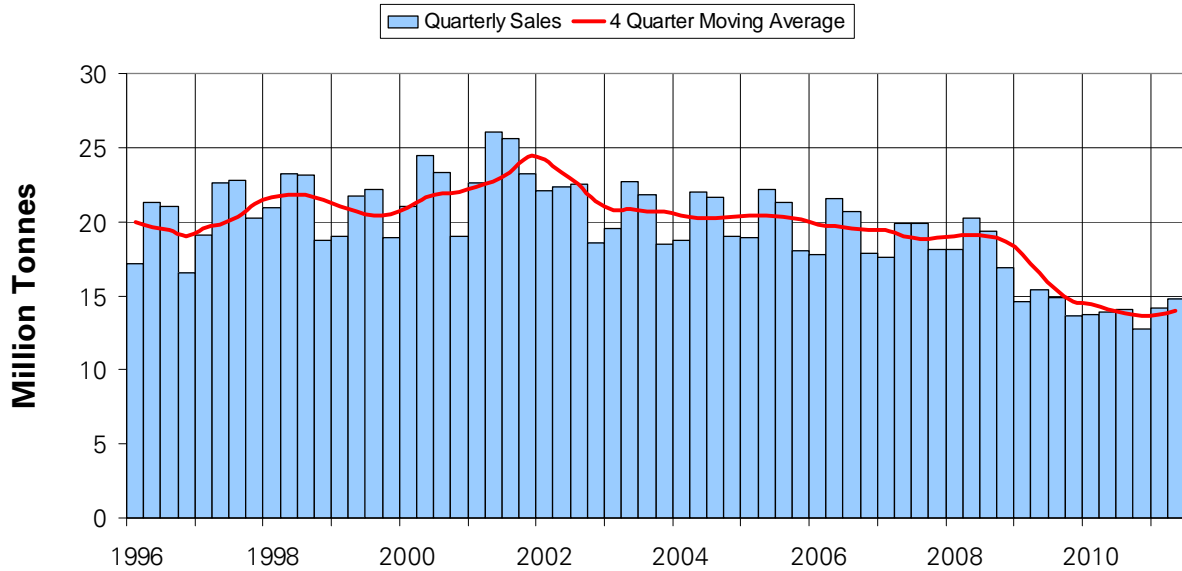


Data Taken From Table 2

Sand and Gravel

Total sales of Sand and Gravel in Great Britain in 2011Q2 amounted to 14.6 million tonnes, an increase of 6.3% compared to 2010Q2. This increase was driven by a 22.7% increase in the quantity of sand sold for concreting. The quantity of sand sold for building fell by 0.1% over the same period.

GB Sales of Sand and Gravel



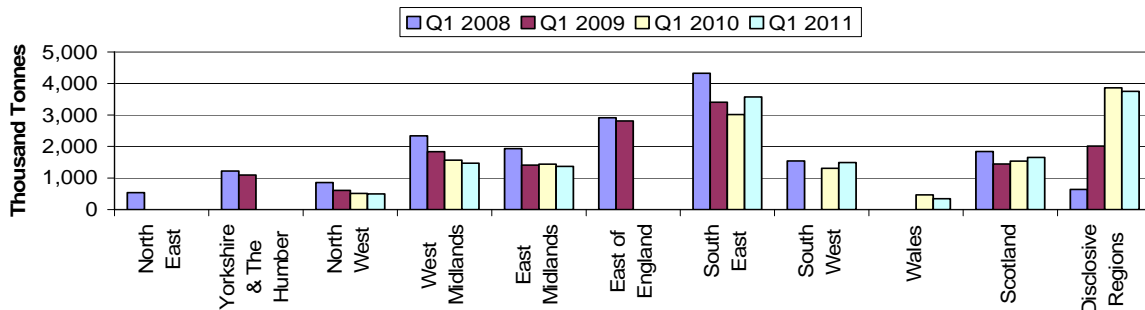
Data taken from Table 4

The South East continues to be the dominant sales region for sand and gravel, accounting for a quarter of all sales in Great Britain in 2011Q1.

Sales of sand and gravel increased by 18.4% in the South East, 14.5% in the South West and by 7.3% in Scotland compared to 2010Q1. Over the same period, the region experiencing the largest fall in sales of sand and gravel was Wales (down 25.8%).

Growth in the South East was driven by growth in Kent (26.4%), Hampshire (18.0%), Greater London (17.5%) and Berkshire (10.2%) compared to 2010Q1.

Regional Deliveries of Sand and Gravel



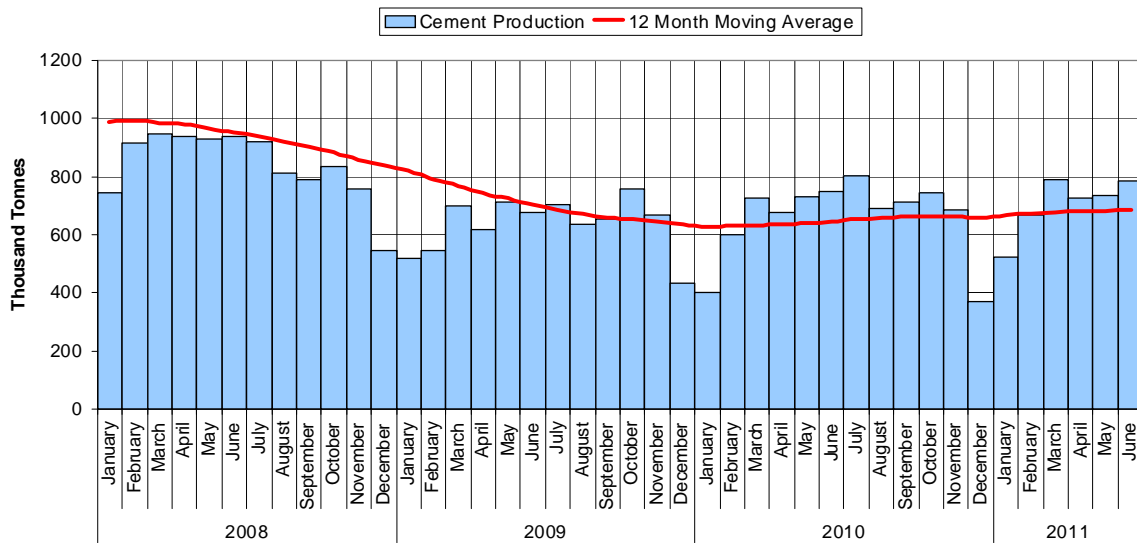
Data taken from Table 5

Slate, Cement and Other Building Materials

Production and deliveries of slate amounted to 16,214 and 15,911 tonnes, respectively, in 2011Q2. Deliveries of other slate rose by 10.8% compared to 2010Q2 and increased by 25.9% compared to the previous quarter. 2011Q2 Deliveries of Slate for Fill have increased by 23.7% compared to 2010 Q2, to 216,524 tonnes, the highest figure since 2008.

Cement production in Great Britain has generally risen since the beginning of the year. In June, it was 6.2% higher than in May and 4.4% higher than in June 2010. Deliveries of cement have followed a similar upward path since the start of the year, rising in June on both a monthly (up 3.4%) and a year-on-year basis (up 0.3%). Meanwhile, Clinker production fell by 5.5% this month, and by 7.3% since June 2010.

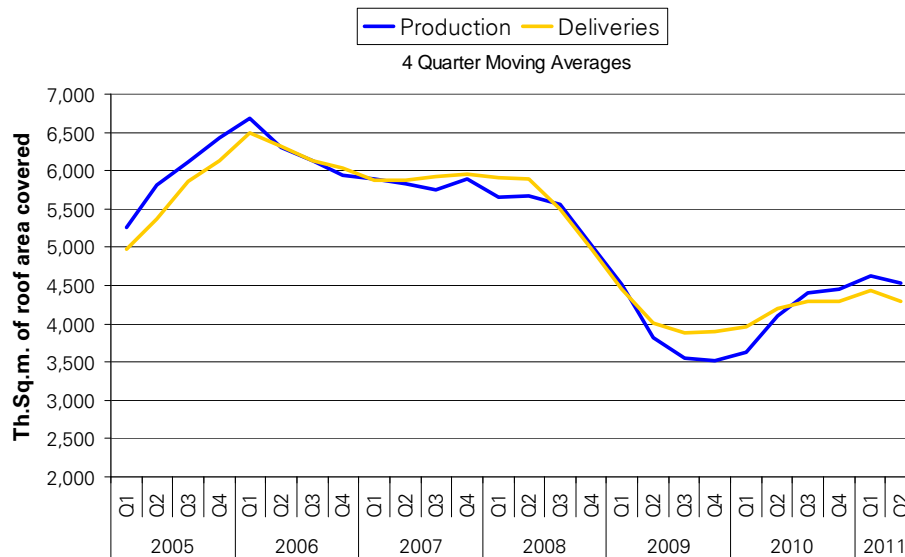
Cement Production



Data taken from Table 8

Production of Concrete Roofing Tiles fell by 8.0% compared to 2010Q2, the first year-on-year decline since 2009Q4. Over the same period, Deliveries of Concrete Roofing Tiles fell by 10.7% while 'Ready-mixed concrete' deliveries rose by 2.3%.

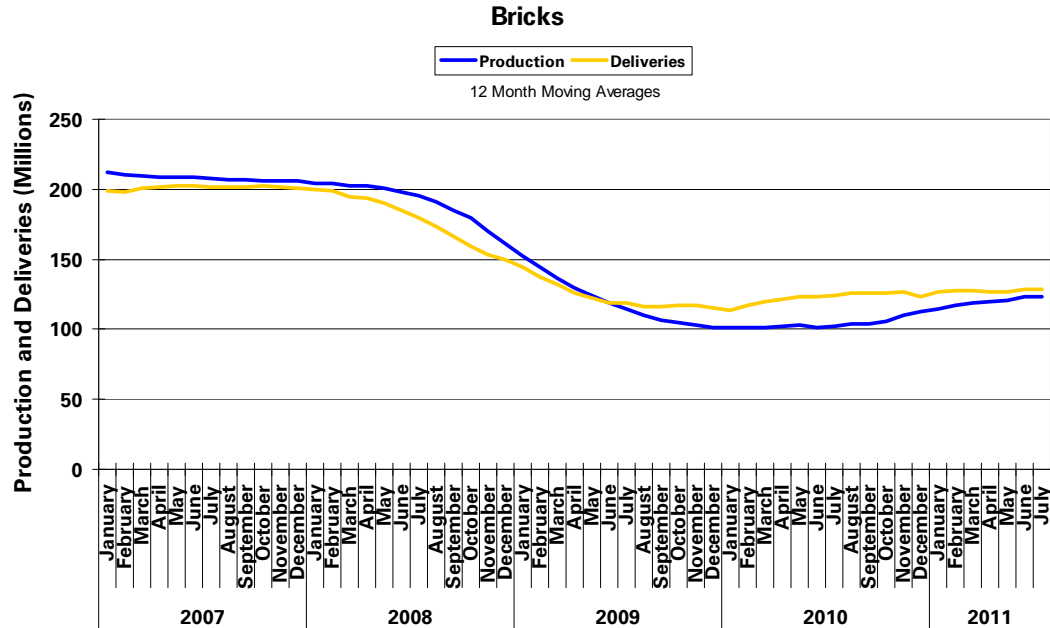
Concrete Roofing Tiles



Data taken from Table 13

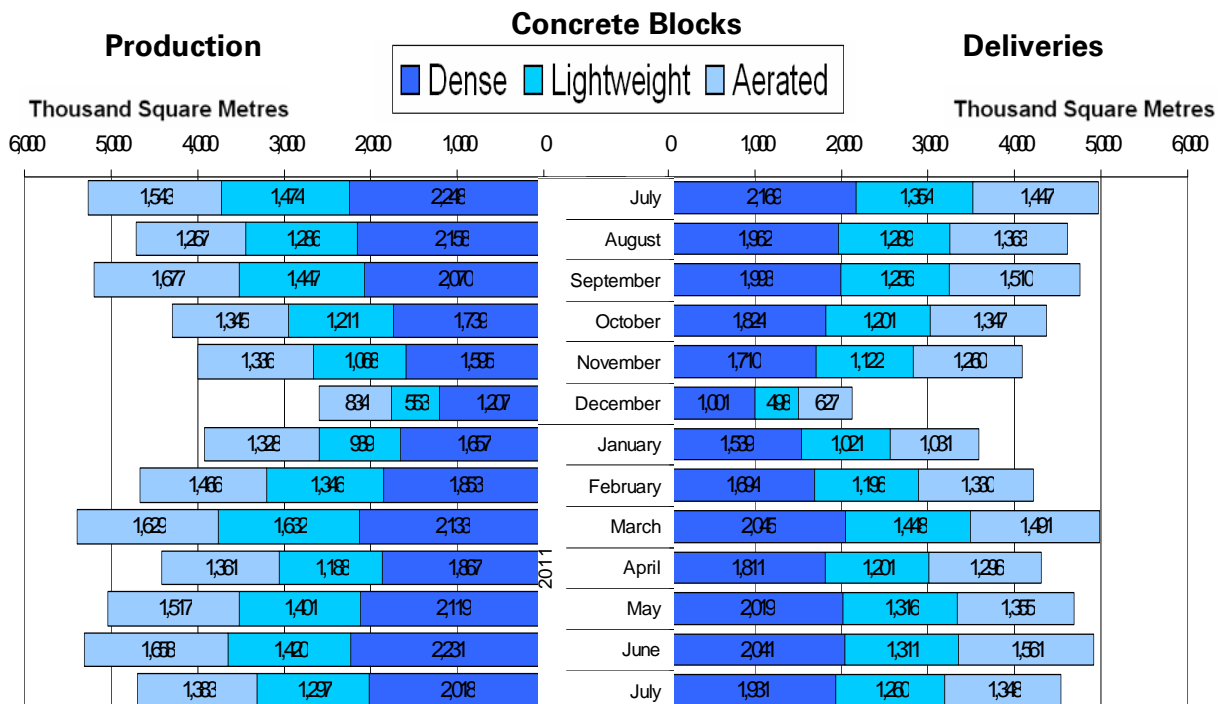
Bricks and Concrete Blocks

Total production of bricks fell by 14.9% this month, while deliveries fell by 3.5%. The main contributor to the fall in production was facing bricks which fell by 13.8%. However total production rose by 2.4% compared to June 2010 and deliveries have increased by 2.5%. This is the tenth month in a row that production has increased compared to the same month last year. The 12 month moving average of production has nearly matched the 12 month moving average of deliveries, having come back from a lower base in 2010.



Data taken from Table 9

Total production and deliveries of concrete blocks has fallen by 11.5% and 7.6% respectively on the month in June. Production and deliveries of all types of block fell this month.



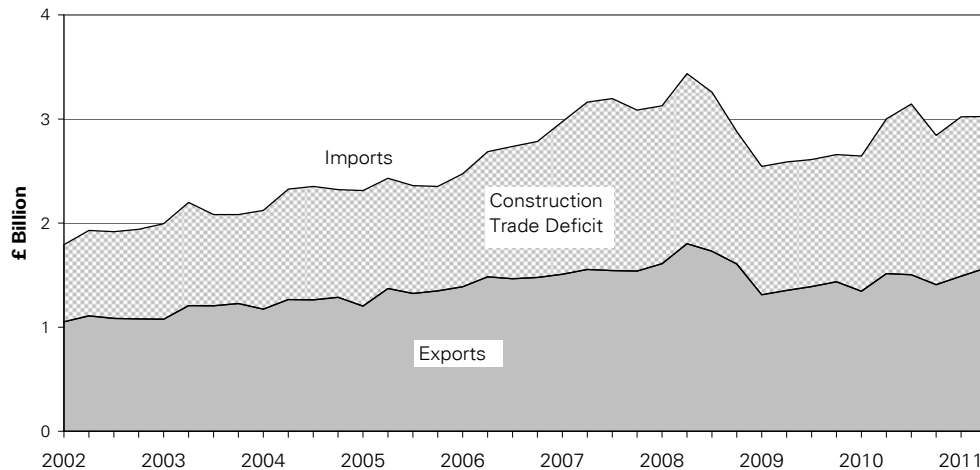
Imports and Exports of Selected Building Materials and Components

2011Q2 Construction Imports increased by 0.1% to £3,025 million, while an increase in Exports of 5.4% to £1,489 million, closed the trade gap to £1,455 million from £1,532 million in 2011Q1. 'Products and components' accounted for 83% of all construction material imports and 89% of all construction material exports in 2011Q1.

The decrease in the trade deficit on the quarter in 2011Q2 was due to a closing in the trade deficit in 'products and components' of £150 million. Over the same period, the trade deficit in 'semi-manufactures' and 'raw materials' widened by £67 million and £6 respectively.

The top five imported construction materials this quarter were Electrical Wires, Sawn Wood, Structural Units (Steel), Air Conditioning equipment, and Lamps & Fittings. The top five exported materials were Paint and Varnishes, Electrical Wires, Structural Units (Steel), Air Conditioning Equipment and Lamps & Fittings.

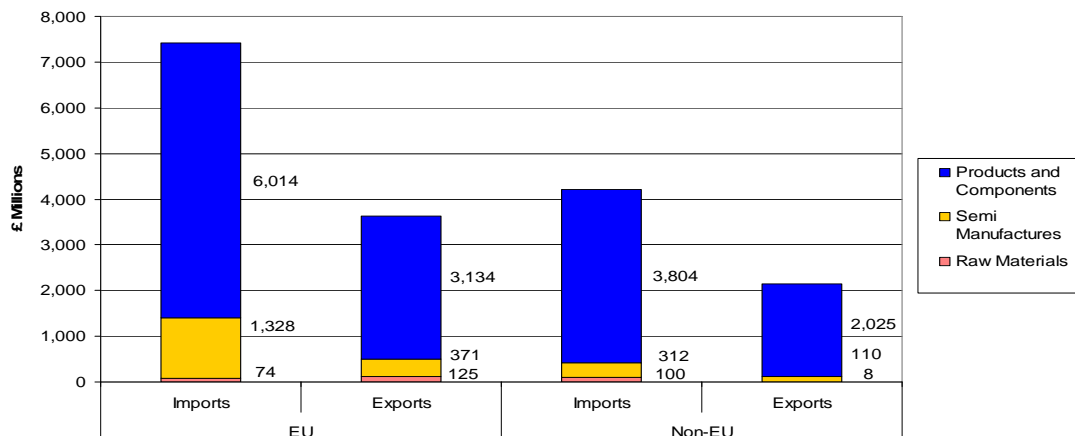
Quarterly Imports and Exports of Building Materials and Components



Data is taken from Table 14

In 2010 63.8% of building materials imports were from EU countries, while 62.9% of exports were to EU countries. The greatest value of UK building materials imports came from Germany followed by China, Italy, the Netherlands then Sweden. The greatest value of exports from the UK were to Ireland, Germany, France, the Netherlands and the USA.

Breakdown of Construction Imports and Exports for 2010



Data taken from Table 15

Please send us any comments or feedback you may have about this commentary.

Lead Statistician: Tony Wilkins
 E-mail: materialstats@bis.gsi.gov.uk
 Telephone: 0207 215 3092