

# First Release

## DWP QUARTERLY STATISTICAL SUMMARY

12<sup>th</sup> May 2010  
IFD120510SSMAY10

Coverage: Great Britain (unless otherwise stated)

Theme: People and Places

*This Statistical Summary aims to give users a structured overview of the National Statistics published by the Department for Work and Pensions (DWP). Statistics are grouped by component area of DWP and, for each statistic, links are given for users to access more detailed information.*

*Key benefit statistics and New Deal statistics from 100% sources are available on an internet-based tabulation tool. A similar tabulation tool derived from 5% sample data is also available, however wherever possible 100% data should be used in preference to 5% estimates, as they are more accurate and form DWP's headline statistics. Data is also released via the NOMIS website and the Neighbourhood Statistics website.*

The latest National Statistics on benefit claimants, employment programmes, labour market decisions and vacancies produced by DWP were released on 12<sup>th</sup> May 2010 according to the arrangements approved by the UK Statistics Authority. Not all DWP National Statistics are covered by this release. Some statistics have their own first releases, but links to these are given throughout.

### Key Findings

- There were 5.9 million working age benefit claimants at November 2009. This is an increase of 453 thousand in the year to November 2009.
- Employment and Support Allowance (ESA) was introduced on 27<sup>th</sup> October 2008. There were around 426 thousand people claiming Employment and Support Allowance at the end of November 2009.
- The number of working age claimants of ESA and incapacity benefits totals 2.62 million in November 2009. This figure is 13 thousand higher than November 2008.
- The number of lone parents claiming Income Support (IS) decreased by 33 thousand to 696 thousand in the year to November 2009.
- At February 2010, the total number of people claiming Housing Benefit was 4.7 million, with 5.7 million claiming Council Tax Benefit.
- 3.62 million people had started on a New Deal programme up to February 2010. At November 2009, 2.29 million people have gained a job through the New Deal programme, with 118 thousand people gaining a job through Employment Zones up to January 2010.
- At November 2009, there were 12.6 million people of state pension age claiming a DWP benefit, an increase of 250 thousand since November 2008. Of these, 66% were claiming State Pension (SP) only.
- At November 2009, there were 12.45 million claimants of State Pension (SP), a rise of 258 thousand on a year earlier. Of these, 38% were male and 62% female.
- At November 2009, there were 2.74 million claimants of Pension Credit (3.35 million including partners), a rise of 3 thousand on the previous quarter. Of these, 953 thousand claimed Guarantee Credit only, 1.2 million claimed Guarantee and Savings Credit, and 578 thousand were claiming Savings Credit only.

**DWP** Department for  
Work and Pensions

**Issued by:**  
Information Directorate  
Department for Work and  
Pensions

Telephone:  
Press Office: 0203 267 5144

Website:  
[www.dwp.gov.uk](http://www.dwp.gov.uk)

### Statistician:

Stuart Grant  
Information Directorate  
Department for Work and  
Pensions  
Room BP5201  
Benton Park Road  
Longbenton  
Newcastle upon Tyne  
NE98 1YX

Telephone: 0191 216 6263  
Email:  
[stuart.grant@dwp.gsi.gov.uk](mailto:stuart.grant@dwp.gsi.gov.uk)

**Next publication:**  
16<sup>th</sup> June 2010  
(see Notes section)



- At the end of March 2010, the total Child Support Agency (CSA) live and assessed caseload stood at 1.15 million cases, of which 61% were current scheme cases.
- At November 2009, there were 3.12 million recipients of Disability Living Allowance (DLA), 527 thousand recipients of Carer's Allowance (CA), and 1.62 million recipients of Attendance Allowance (AA).

**Experimental statistics on benefit flows show:**

- There were 681 thousand new claims to Employment and Support Allowance and incapacity benefits, 27 thousand new claims to Bereavement Benefit/Widows Benefit (BB/WB), 372 thousand to Income Support (IS) and 708 thousand new claims to State Pension (SP) in the year to November 2009.
- There were 684 thousand benefit exits for Employment and Support Allowance and incapacity benefits, 41 thousand for Bereavement Benefit/Widows Benefit (BB/WB), 556 thousand for Income Support (IS) and 507 thousand benefit exits for State Pension (SP) in the year to November 2009.
- There were 263 thousand new claims to PC in the financial year 2008/2009.

**Experimental statistics on early estimates show:**

- At the end of March 2010, the working age Income Support lone parents (ISLP) early estimate was 680 thousand.
- At the end of March 2010, the Employment and Support Allowance and incapacity benefits (ESA/IB) early estimate was 2.61 million.



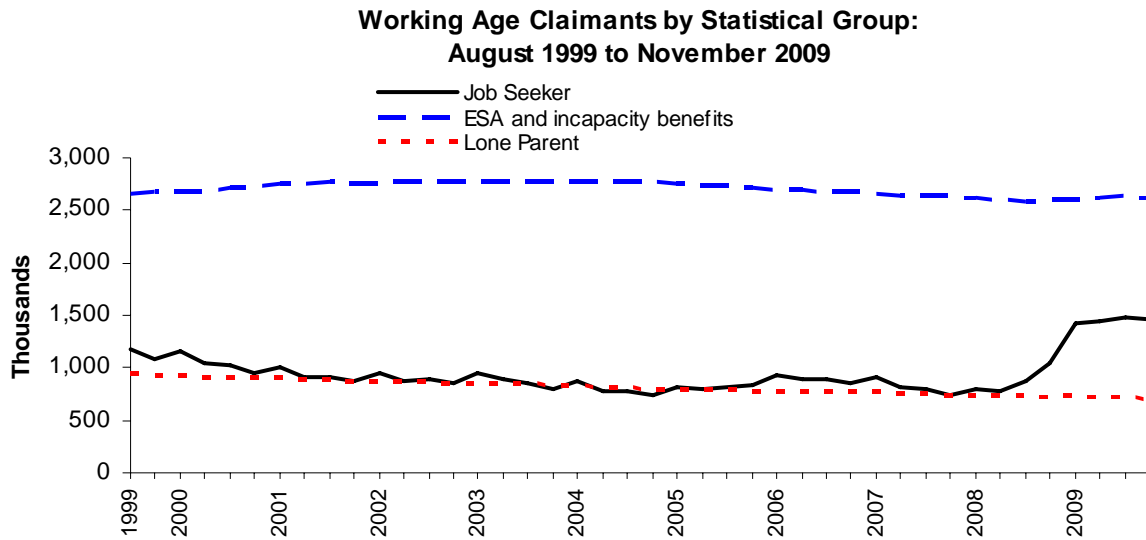
## Contents

<b>1. Working Age</b>	
	<i>Page</i>
1.1 Working age Client Group	4
Individual Benefits	
1.2 Jobseeker's Allowance	7
1.3 Incapacity Benefit & Severe Disablement Allowance	8
1.4 Employment and Support Allowance	8
1.5 Income Support	10
1.6 Housing Benefit	11
1.7 Council Tax Benefit	11
1.8 Widow's Benefit & Bereavement Benefit	12
1.9 Jobseeker's Allowance sanctions and disallowances	13
1.10 New Deals & Employment Zones	14
1.11 Vacancies handled by Jobcentre Plus	15
<b>2. Early Estimates for Working Age Inactive Benefit Client Group</b>	
2.1 Employment and Support Allowance / incapacity benefits (ESA/IB) client group	16
2.2 Income Support Lone Parent (ISLP) client group	17
<b>3. Pensioners</b>	
3.1 Pensioner Client Group	18
Individual Benefits	
3.2 State Pension	19
3.3 Pension Credit	20
<b>4. Disabled and Carers</b>	
4.1 Disability Living Allowance	21
4.2 Attendance Allowance	21
4.3 Carer's Allowance	22
4.4 Industrial Injuries Disablement Benefit	23
<b>5. Families &amp; Children</b>	
5.1 Child Support Agency cases	24
Notes	26

## 1. Working Age

### 1.1 Working Age client group

Combines data collected for Jobseeker's Allowance, Incapacity Benefit, Employment and Support Allowance, Severe Disablement Allowance, Disability Living Allowance, Carer's Allowance, Widow's Benefit, Bereavement Benefit and Income Support for working age claimants (including Pension Credit for males aged 60 to 64).



Between August 1999 and November 2007, the number of jobseekers in GB fell from 1.18 million to 741 thousand. However, it has risen to almost 1.47 million at November 2009. The preferred source of JSA figures is the ONS claimant count measure (which is seasonally adjusted).

The lone parent caseload fell from 945 thousand to 696 thousand between August 1999 and November 2009.

The number of working age claimants of Employment and Support Allowance (ESA) and incapacity benefits totals 2.62 million in November 2009. This shows a year-on-year increase of 13 thousand.



**Table 1.1 Working Age claimants by Statistical Group: August 1999 – November 2009**

	Total	Job Seeker <sup>2</sup>	Employment and Support Allowance and incapacity benefits <sup>3</sup>	Lone Parent <sup>4</sup>	Carer <sup>5</sup>	Other Income Related <sup>6</sup>	Disabled <sup>7</sup>	Thousands Bereaved <sup>8</sup>
Aug -99	..	1,181.86	2,655.38	945.06	316.13	221.31	..	..
Nov -99	..	1,083.03	2,674.71	930.24	316.50	218.37	..	..
Feb -00	..	1,154.97	2,676.39	923.47	313.58	216.97	..	..
May -00	..	1,037.01	2,686.30	919.43	310.88	210.80	..	..
Aug -00	..	1,015.83	2,714.85	920.10	309.67	197.95	..	..
Nov -00	..	948.66	2,722.57	905.76	311.56	196.69	..	..
Feb -01	..	1,001.08	2,750.45	908.21	313.96	182.81	..	..
May -01	..	909.15	2,753.66	900.43	319.59	180.15	..	..
Aug -01	..	907.68	2,763.62	900.22	323.83	175.41	..	..
Nov -01	..	880.36	2,746.02	878.59	328.62	179.08	..	..
Feb -02	..	955.45	2,745.58	877.11	332.02	176.62	..	..
May -02	<b>5,455.75</b>	877.38	2,765.73	870.95	335.79	165.60	245.27	195.02
Aug -02	<b>5,481.48</b>	890.54	2,769.36	875.04	339.91	167.19	249.72	189.71
Nov -02	<b>5,428.63</b>	850.05	2,776.56	856.23	343.72	161.36	256.58	184.13
Feb -03	<b>5,514.28</b>	946.16	2,776.54	848.85	346.17	156.33	260.92	179.32
May -03	<b>5,459.68</b>	885.78	2,773.61	855.81	347.94	155.96	266.25	174.33
Aug -03	<b>5,425.85</b>	851.37	2,777.06	851.73	350.41	155.26	270.15	169.88
Nov -03	<b>5,363.74</b>	803.88	2,780.49	831.75	353.25	154.20	275.51	164.67
Feb -04	<b>5,426.42</b>	867.42	2,777.53	830.25	355.81	155.20	280.13	160.09
May -04	<b>5,327.35</b>	777.40	2,772.85	823.27	359.25	155.42	283.33	155.83
Aug -04	<b>5,321.26</b>	769.25	2,774.93	818.10	360.08	158.20	289.12	151.59
Nov -04	<b>5,270.77</b>	741.06	2,772.18	796.53	361.42	157.94	294.15	147.49
Feb -05	<b>5,327.77</b>	819.68	2,757.65	793.13	362.04	153.93	297.23	144.11
May -05	<b>5,289.13</b>	800.66	2,741.62	789.32	363.76	151.09	300.96	141.73
Aug -05	<b>5,302.72</b>	825.11	2,725.47	789.35	365.08	153.71	305.84	138.17
Nov -05	<b>5,287.66</b>	836.71	2,710.50	778.56	363.34	155.74	309.31	133.51
Feb -06	<b>5,384.74</b>	935.20	2,705.47	777.10	368.66	153.06	313.85	131.40
May -06	<b>5,325.77</b>	895.88	2,688.02	774.86	368.50	152.70	317.04	128.78
Aug -06	<b>5,335.22</b>	900.92	2,683.00	783.19	369.81	153.12	319.13	126.06
Nov -06	<b>5,288.35</b>	860.22	2,672.97	775.62	371.71	161.10	326.64	120.09
Feb -07	<b>5,321.68</b>	904.04	2,662.13	771.35	373.83	163.32	329.75	117.26
May -07	<b>5,207.27</b>	807.27	2,643.21	765.62	374.84	167.05	335.14	114.15
Aug -07	<b>5,187.14</b>	788.45	2,641.11	763.55	376.03	167.84	340.61	109.55
Nov -07	<b>5,124.68</b>	741.10	2,641.70	741.83	379.35	167.29	346.16	107.25
Feb -08	<b>5,174.88</b>	806.70	2,617.88	741.71	384.49	169.95	349.38	104.78
May -08	<b>5,142.63</b>	787.87	2,595.83	738.64	387.56	173.33	356.50	102.90
Aug -08	<b>5,232.88</b>	868.73	2,590.61	744.68	392.73	176.23	360.08	99.81
Nov -08	<b>5,404.12</b>	1,036.48	2,605.51	728.98	396.80	178.84	360.47	97.04
Feb -09	<b>5,802.48</b>	1,421.60	2,603.54	736.04	400.12	181.88	363.82	95.49
May -09	<b>5,836.50</b>	1,443.00	2,621.43	720.48	405.56	183.22	368.94	93.87
Aug -09	<b>5,895.65</b>	1,485.32	2,632.74	715.73	412.97	184.46	373.10	91.33
Nov -09	<b>5,857.13</b>	1,469.92	2,618.38	695.72	418.53	188.23	377.95	88.40

**Notes:**

See page 6 for notes on Table 1.1



### **Notes relating to Table 1.1**

1. Claimants have been assigned to a statistical group according to a hierarchy. The order is shown in the table, i.e. 'Job Seekers' followed by 'Employment and Support Allowance and incapacity benefits'.
2. 'Job Seekers' are recipients of Jobseeker's Allowance.
3. 'From November 2008 the "incapacity benefits group" includes Employment and Support Allowance (ESA). ESA replaced Incapacity Benefit and Income Support paid on the grounds of incapacity for new claims from 27th October 2008. Prior to this the "incapacity benefits group" referred to claimants of Incapacity Benefit (including credits only) or Severe Disablement Allowance including people claiming IS on the grounds of Incapacity.
4. 'Lone Parents' are single recipients of Income Support with a child under 16.
5. 'Carers' are recipients of Carers Allowance.
6. 'Others on Income Related Benefit' are other recipients of Income Support (including Income Support Disability Premium) or Pension Credit.
7. 'Disabled' are recipients of Disability Living Allowance. Industrial Injuries benefits data is not available.
8. 'Bereaved' are recipients of Widow's Benefit or Bereavement Benefit.
9. Totals are not shown prior to May 2002 as complete data is not available for 'Disabled' and 'Bereaved' statistical groups.
10. HB/CTB data are not included in the client group hierarchy but are published separately (see page 11).

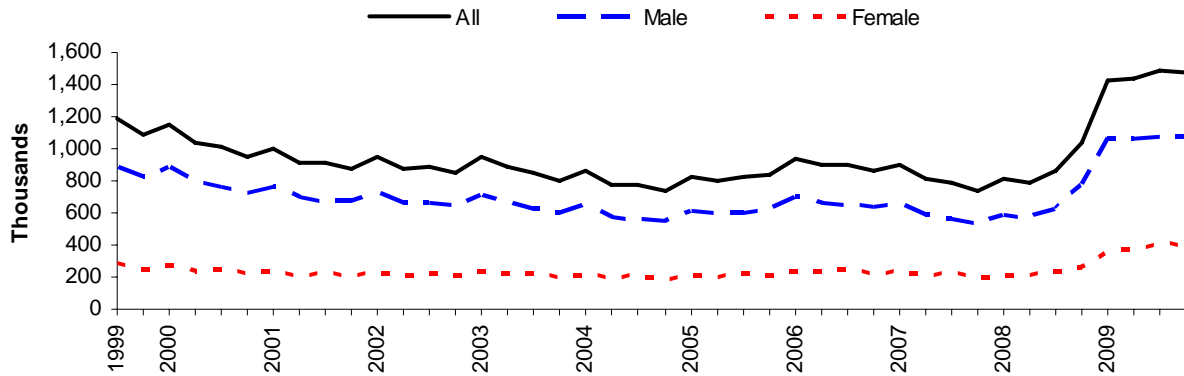
Latest statistical data available from: <http://statistics.dwp.gov.uk/asd/tabtool.asp>



## 1.2 Jobseeker's Allowance

Jobseeker's Allowance (JSA) was introduced on 7th October 1996 and has both contributory and income-related elements. It is paid to people under state pension age who are available for and actively seeking work of at least forty hours per week.

Jobseekers Allowance by Gender: August 1999 to November 2009



The preferred source of JSA figures is the ONS claimant count measure (which is seasonally adjusted).

DWP produce a separate set of Jobseeker's Allowance figures to enable cross-benefit analysis and supply a wider range of breakdowns, and these are provided in this release.

The DWP figures at November 2009 show the total number of Jobseeker's Allowance claimants was almost 1.47 million. Female claimants represented 27% of the JSA caseload (395 thousand), while males represented 73% (1,075 thousand). The total caseload has risen by 433 thousand since November 2008.

Latest statistical data available from: <http://statistics.dwp.gov.uk/asd/tabtool.asp>



### 1.3 Incapacity Benefit and Severe Disablement Allowance

Incapacity benefits consist of Incapacity Benefit (introduced on 13th April 1995 and paid to people who are incapable of work and who have paid sufficient contributions throughout their working life) and Severe Disablement Allowance (SDA). From 27th October 2008, Employment & Support Allowance (ESA) replaced Incapacity Benefit and Income Support paid on the grounds of incapacity for new claims. **Please note claimants of ESA are not included in figures in Section 1.3 or in Table 1.2. Please see the “Notes” section for detail on how we plan to change these sections to include ESA in the next issue.**

At November 2009, there were 2.19 million working age claimants of incapacity benefits (Incapacity Benefit or Severe Disablement Allowance), a decrease of 359 thousand on a year earlier. 57% of claimants were men and 43% women. Both the male and female caseloads are now falling: males by 207 thousand and females by 152 thousand in the year to November 2009. This is because Employment and Support Allowance has replaced incapacity benefits for new claims. See section 1.4.

At November 2009, 62% (1.35 million) of working age claimants were beneficiaries (i.e. were paid Incapacity Benefit or Severe Disablement Allowance), with the remaining 839 thousand receiving National Insurance Credits, many of whom also receive Income Support. A further 41 thousand were claimants above state pension age: these were almost all recipients of Severe Disablement Allowance.

In the year to November 2009, there were a total of 54 thousand new claims for working age incapacity benefits and 372 thousand claims were closed.

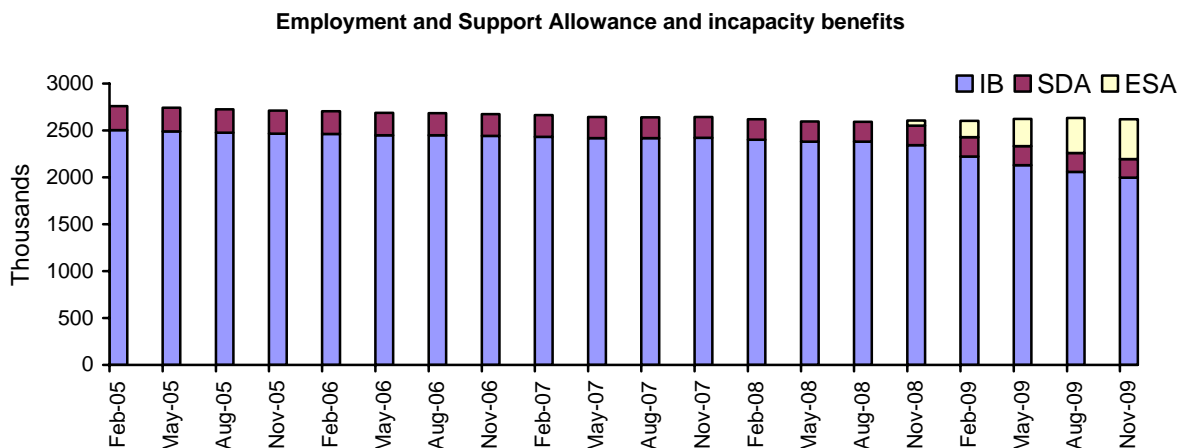
Latest statistical data available from: <http://statistics.dwp.gov.uk/asd/tabtool.asp>

### 1.4 Employment and Support Allowance

From 27th October 2008, Employment & Support Allowance (ESA) replaced Incapacity Benefit and Income Support paid on the grounds of incapacity for new claims.

At November 2009, there were 426 thousand claimants of Employment and Support Allowance. 58% of claimants were men and 42% women.

There were 160 thousand new Employment and Support Allowance claimants in the November 2009 quarter, which represents 37% of the November caseload. Over the same period, 110 thousand claimants left the benefits, 26% of the caseload at November 2009.



Latest statistical data available from: <http://research.dwp.gov.uk/asd/esa.asp>



**Table 1.2 Incapacity benefits claimants & beneficiaries: August 1999 – November 2009**  
**Figures exclude Employment and Support allowance claimants**

Thousands

	All IB/SDA claimants <sup>1,2</sup>			All IB/SDA beneficiaries <sup>1,2</sup>		
	All ages	Working Age	State Pension Age	All ages	Working Age	State Pension Age
Aug -99	<b>2,732.50</b>	2,655.46	77.05	<b>1,978.56</b>	1,902.14	76.42
Nov -99	<b>2,738.13</b>	2,674.81	63.32	<b>1,967.96</b>	1,905.13	62.83
Feb -00	<b>2,724.03</b>	2,676.50	47.53	<b>1,949.96</b>	1,902.81	47.15
May -00	<b>2,728.09</b>	2,686.40	41.69	<b>1,941.20</b>	1,899.81	41.39
Aug -00	<b>2,756.51</b>	2,714.95	41.55	<b>1,949.08</b>	1,907.75	41.33
Nov -00	<b>2,764.14</b>	2,722.65	41.49	<b>1,945.44</b>	1,904.11	41.33
Feb -01	<b>2,792.03</b>	2,750.53	41.50	<b>1,961.19</b>	1,919.80	41.39
May -01	<b>2,795.34</b>	2,753.74	41.60	<b>1,955.00</b>	1,913.52	41.49
Aug -01	<b>2,805.45</b>	2,763.87	41.58	<b>1,947.63</b>	1,906.15	41.49
Nov -01	<b>2,787.71</b>	2,746.07	41.64	<b>1,926.79</b>	1,885.22	41.56
Feb -02	<b>2,787.22</b>	2,745.67	41.56	<b>1,923.90</b>	1,882.45	41.45
May -02	<b>2,807.63</b>	2,765.82	41.80	<b>1,925.86</b>	1,884.16	41.70
Aug -02	<b>2,811.43</b>	2,769.70	41.73	<b>1,918.07</b>	1,876.43	41.63
Nov -02	<b>2,818.48</b>	2,776.64	41.83	<b>1,912.53</b>	1,870.79	41.74
Feb -03	<b>2,818.57</b>	2,776.63	41.94	<b>1,908.90</b>	1,867.06	41.84
May -03	<b>2,815.66</b>	2,773.71	41.95	<b>1,897.03</b>	1,855.19	41.84
Aug -03	<b>2,819.05</b>	2,777.28	41.77	<b>1,888.80</b>	1,847.11	41.69
Nov -03	<b>2,822.27</b>	2,780.58	41.70	<b>1,881.88</b>	1,840.25	41.63
Feb -04	<b>2,819.16</b>	2,777.62	41.54	<b>1,873.81</b>	1,832.35	41.46
May -04	<b>2,814.71</b>	2,772.93	41.79	<b>1,859.96</b>	1,818.25	41.70
Aug -04	<b>2,817.01</b>	2,775.10	41.90	<b>1,849.78</b>	1,807.95	41.83
Nov -04	<b>2,814.41</b>	2,772.23	42.17	<b>1,840.28</b>	1,798.18	42.10
Feb -05	<b>2,799.87</b>	2,757.71	42.17	<b>1,827.15</b>	1,785.08	42.08
May -05	<b>2,783.72</b>	2,741.67	42.05	<b>1,809.98</b>	1,768.02	41.96
Aug -05	<b>2,767.74</b>	2,725.55	42.20	<b>1,793.00</b>	1,750.89	42.11
Nov -05	<b>2,752.90</b>	2,710.74	42.16	<b>1,780.31</b>	1,738.21	42.10
Feb -06	<b>2,747.49</b>	2,705.58	41.91	<b>1,768.66</b>	1,726.82	41.84
May -06	<b>2,730.00</b>	2,688.14	41.86	<b>1,750.91</b>	1,709.12	41.79
Aug -06	<b>2,724.98</b>	2,683.13	41.85	<b>1,738.64</b>	1,696.87	41.78
Nov -06	<b>2,714.95</b>	2,673.05	41.90	<b>1,724.35</b>	1,682.52	41.83
Feb -07	<b>2,704.10</b>	2,662.21	41.89	<b>1,711.63</b>	1,669.81	41.82
May -07	<b>2,685.32</b>	2,643.29	42.03	<b>1,692.66</b>	1,650.71	41.95
Aug -07	<b>2,683.16</b>	2,641.11	42.05	<b>1,681.86</b>	1,639.88	41.98
Nov -07	<b>2,683.75</b>	2,641.71	42.05	<b>1,673.10</b>	1,631.12	41.98
Feb -08	<b>2,659.65</b>	2,617.88	41.77	<b>1,655.01</b>	1,613.31	41.70
May -08	<b>2,637.56</b>	2,595.83	41.73	<b>1,634.92</b>	1,593.27	41.65
Aug -08	<b>2,632.00</b>	2,590.61	41.38	<b>1,624.20</b>	1,582.89	41.31
Nov -08	<b>2,593.01</b>	2,551.88	41.13	<b>1,597.04</b>	1,555.97	41.07
Feb -09	<b>2,468.62</b>	2,427.82	40.80	<b>1,533.01</b>	1,492.28	40.73
May -09	<b>2,374.21</b>	2,333.49	40.72	<b>1,479.85</b>	1,439.19	40.66
Aug -09	<b>2,299.58</b>	2,258.94	40.64	<b>1,435.20</b>	1,394.60	40.60
Nov -09	<b>2,233.88</b>	2,193.38	40.50	<b>1,394.40</b>	1,353.93	40.47

**Notes:**

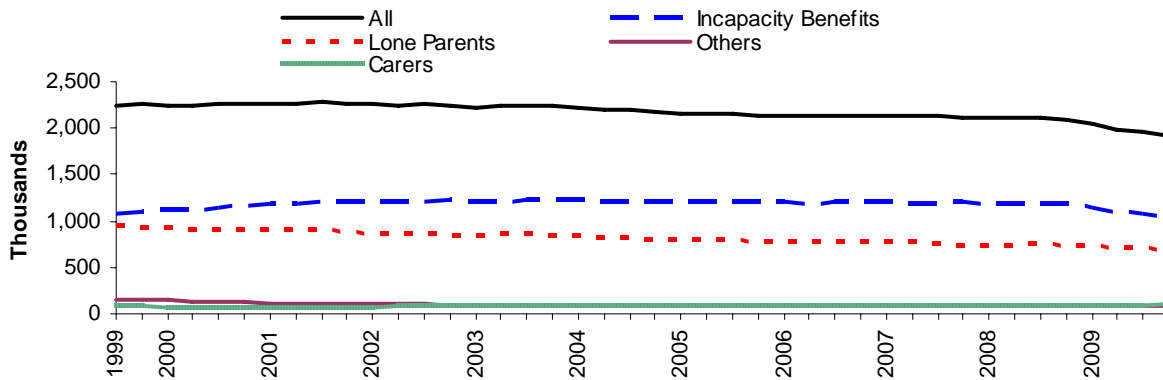
1. 'IB' – Incapacity Benefit, 'SDA' – Severe Disablement Allowance.
2. Figures on 'IB' beneficiaries show those claimants who are receiving money. 'IB' claimants include those beneficiaries plus, those receiving National Insurance Credits and no monetary payment (many of whom will also receive Income Support).
3. 'Incapacity benefits' refer to recipients of 'IB' or 'SDA', including credits only cases in receipt of Income Support on the grounds of incapacity. Numbers of Working Age claimants of 'incapacity benefits' (IB/SDA) are shown in both the Working Age Client Group and IB/SDA sections of this release. Working Age IB/SDA totals vary slightly between the two sections (a difference of approx. 0.5%) because of minor differences in methodology.
4. Figures exclude Employment and Support Allowance which replaced Incapacity Benefit and Income Support paid on the grounds of incapacity for new claims. Claimants of ESA are not included in the November 2008 figures onwards.



## 1.5 Income Support

Income Support (IS) was introduced on 11th April 1988 and is an income-related benefit that can be claimed by people aged 16-59 that work fewer than 16 hours a week and have insufficient income to meet their needs. Prior to the introduction of Pension Credit in October 2003, IS was available to people aged 60 and over. From 27th October 2008, Employment & Support Allowance (ESA) replaced Incapacity Benefit and Income Support paid on the grounds of incapacity for new claims.

**Income Support by Statistical Group:  
August 1999 to November 2009**



Pension Credit (PC) replaced Minimum Income Guarantee (MIG) in Income Support on 6 October 2003. **MIG claimants have been excluded from this data prior to November 2003.**

At November 2009, the total number of Income Support (IS) claimants was 1.91 million. Claimants of incapacity benefits represented 54% of the IS caseload (1.04 million). Lone Parents (all single claimants with dependants under 16, excluding claimants of incapacity benefits) represented 36% of the IS caseload (696 thousand), while Carers and Others represented 9% of the caseload (174 thousand).

There were 91 thousand new claimants of Income Support in the November 2009 quarter, which represents 5% of the November caseload. Over the same period, 137 thousand claimants left the benefit, 7% of the caseload at end of November 2009.

In the year to November 2009, there were a total of 372 thousand new claims for Income Support and 556 thousand claims were closed.

**Table 1.3 Income Support Lone Parents claimants: November 2009**

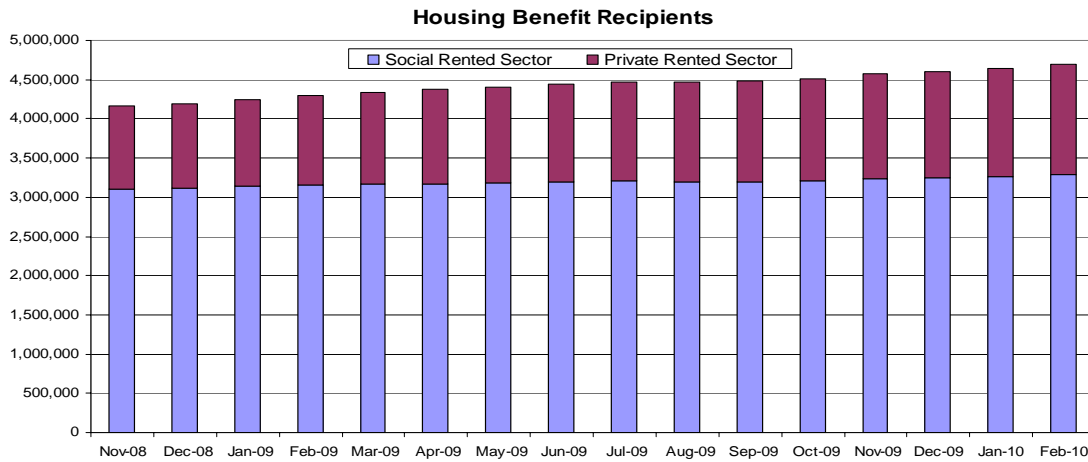
	Total	Thousands	
		Female	Male
<b>All Ages</b>	<b>695.72</b>	670.08	25.65
Unknown Age	0.01	0.01	-
Under 18	5.43	5.42	0.01
18-24	169.45	167.93	1.51
25-34	280.81	272.95	7.86
35-44	191.03	180.39	10.64
45-54	46.26	41.30	4.94
55-59	2.74	2.06	0.67

1. Lone Parents are all single claimants with dependants aged under 16, but excluding claimants of incapacity benefits.

Latest statistical data available from: <http://statistics.dwp.gov.uk/asd/tabtool.asp>

## 1.6 Housing Benefit

*Housing Benefit (HB) was introduced on 1st April 1983 and is an income-related benefit designed to help people on low incomes pay for rented accommodation whether in or out of work.*



At February 2010 there were just under 4.7 million recipients of Housing Benefit, of whom almost two-thirds were of working age. The average weekly amount of Housing Benefit was £83.51.

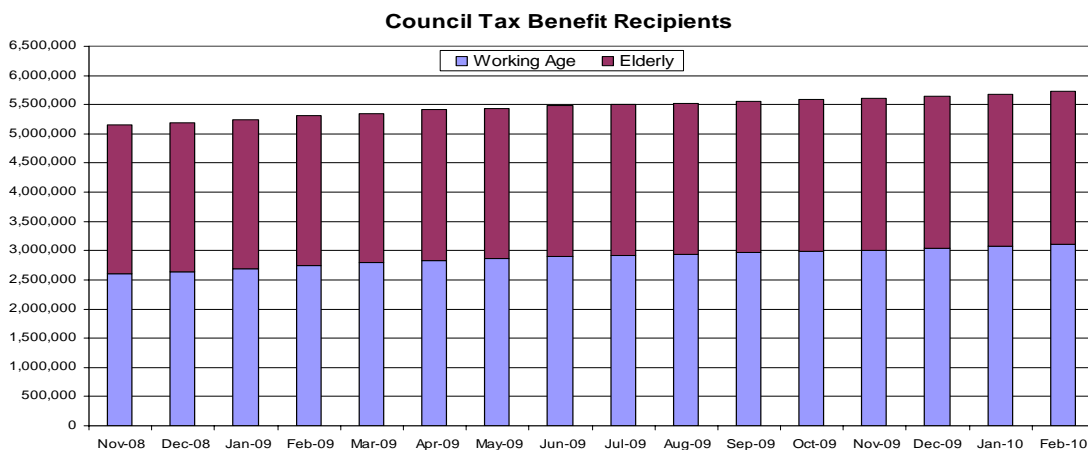
70% of Housing Benefit recipients were tenants of Social Sector landlords and 30% were tenants of Private Sector landlords. 70% of Private Sector tenants were receiving the Local Housing Allowance.

69% were also in receipt of Income Support, income-based Jobseeker's Allowance, income-based Employment and Support Allowance or Pension Credit (Guarantee Credit).

Latest statistical data available from: <http://statistics.dwp.gov.uk/asd/hbctb.asp>

## 1.7 Council Tax Benefit

*Council Tax Benefit (CTB) was introduced on 1st April 1993 and is an income-related benefit, calculated in a similar way to Housing Benefit, which has been designed to help people on low incomes pay their Council Tax.*



At February 2010 there were 5.7 million recipients of Council Tax Benefit (figure excludes second adult rebates), of whom 2.6 million were of working age.

The average weekly amount of Council Tax Benefit was £15.74.

69% of Council Tax Benefit recipients were also in receipt of Income Support, income-based Jobseeker's Allowance, income-based Employment and Support Allowance or Pension Credit (Guarantee Credit).

Latest statistical data available from: <http://statistics.dwp.gov.uk/asd/hbctb.asp>



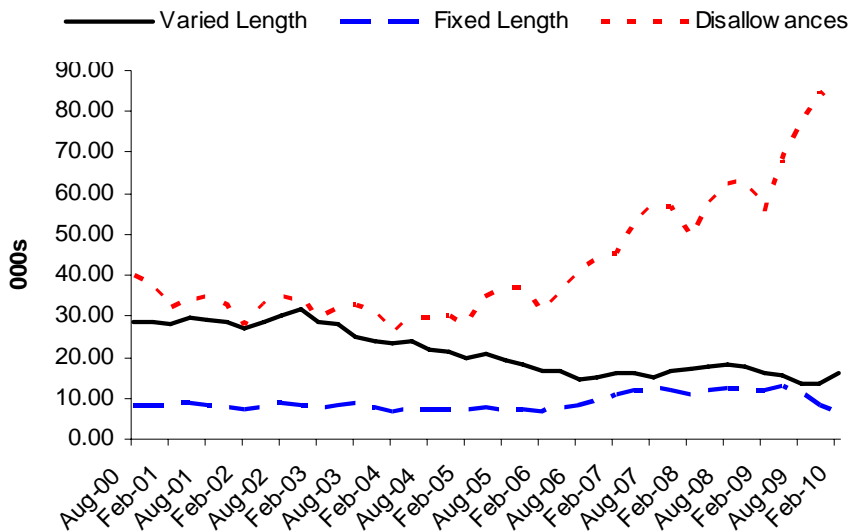


### 1.9 Jobseeker's Allowance sanction and disallowance decisions

A JSA claimant can have their claim sanctioned (payment is temporarily suspended) or disallowed (entitlement ends) if they are deemed not to have just cause for failing to fulfil the conditions of their claim. Sanctions can be 'Varied length' (anything up to 26 weeks) or 'Fixed length' (2, 4 or 26 weeks). Disallowances result in the claim ending.

Flexible New Deal (FND) sanctions are not currently included in the sanction chart below. These National Statistics are currently under review with a view to reflecting new Adjudication Codes for FND and 1-week sanctions linked to mandatory interviews. These are currently excluded.

**Adverse decisions for JSA Labour Market questions for sanctions and disallowances per quarter: August 2000 to February 2010**



In the quarter ending February 2010 there were 166 thousand decisions made, of which 103 thousand were adverse decisions (i.e. a sanction or disallowance was applied).

Of these, 16 thousand were varied length sanctions, 6 thousand were fixed length sanctions and 81 thousand were disallowance decisions. 62% of decisions made in this quarter resulted in an adverse decision.

Please Note: This summary includes data on decisions made for sanction referrals only, not opinions.

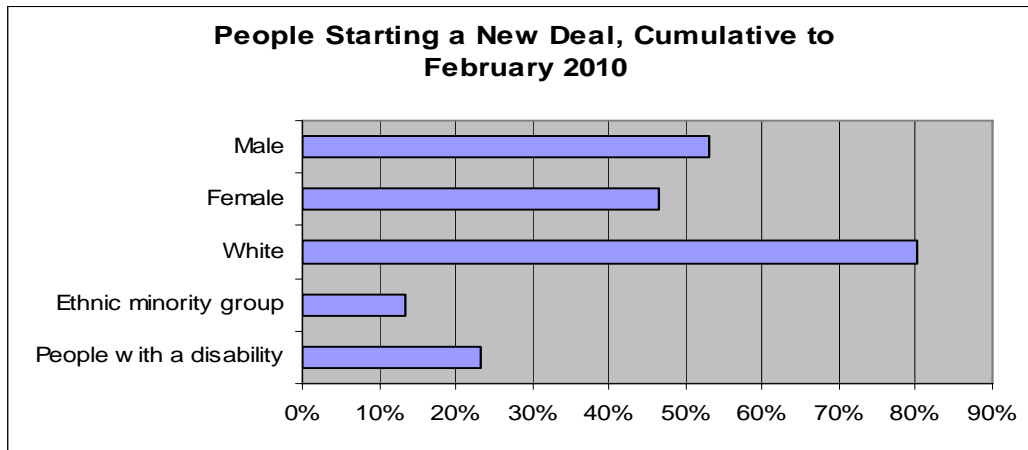
Latest statistical data available from: <http://83.244.183.180/sanction/sanction/LIVE/tabtool.html>



## 1.10 New Deals & Employment Zones

New Deal for Young People was established in 1998 aimed at people aged 18 to 24 unemployed for at least 6 months. Since then a range of other mandatory and voluntary New Deal programmes have been established aimed at specific client groups.

The introduction of the new Jobseeker's Regime and Flexible New Deal (JRFND) will impact on existing statistics for the JSA employment programmes (including the New Deals for Young People, 25 Plus, 50 Plus and Employment Zones). These programmes are being gradually phased out from April 2009 as new customers stop getting referred to the existing programmes and current claims will be gradually transferred to JRFND.



3.62 million people had started on a New Deal programme up to February 2010.

Up to November 2009, some 2.29 million people have gained a job through the New Deal programme, with an additional 118 thousand people gaining a job through Employment Zones up to January 2010.

New Deal for Disabled People (NDDP) participants and leavers series are withdrawn due to data quality issues.

**Table 1.4 Summary of New Deal and Employment Zones**

Thousands

	New Deal for:						Employment Zones
	Young People	25+	Lone Parents <sup>3</sup>	Disabled People <sup>3</sup>	50+ <sup>4</sup>	Partners <sup>5</sup>	
<i>latest data</i> <sup>1</sup>							
People Starting <sup>2</sup>	1,539.42	862.68	1,021.05	347.71	110.77	21.17	238.49
Currently Participating	72.73	37.85	99.60	-	14.91	5.09	14.02
People gaining a Job	935.63	378.31	662.80	215.80	197.62	8.55	117.84

1. Latest data relates to end of February 2010 for people starting NDYP, ND25+, NDLP, NDDP, ND50+ and NDP. For current participants and people gaining a job through NDYP, ND25+, NDLP, NDDP, ND50+ and NDP, latest data relates to the end of November 2009. Latest Employment Zone data is from January 2010.

2. The sum of people starting and gaining a job for each separate New Deal will not equal the number of people starting and gaining a job through the New Deal as a whole (as indicated above) because some people will start and gain a job through more than one New Deal programme.

3. Statistics relating to current participants and leavers from NDDP have been withdrawn for quality reasons.

4. Starts for ND50+ are from January 2004 onwards. The jobs figures for ND50+ also include 98,040 individuals who had received Employment Credit up to March 2003.

5. Starts for NDP also include 7,820 individuals from starts up to March 2004 and jobs for NDP also include a further 1,860 jobs from up to March 2004.

6. For reporting purposes we are still counting starts to the in-work training grant as an ND50plus start in FND phase one areas for the period from April 2009, although the ND50plus programme has officially ended in these areas. We estimate there are 2,400 such starts up to the end of December 2010.

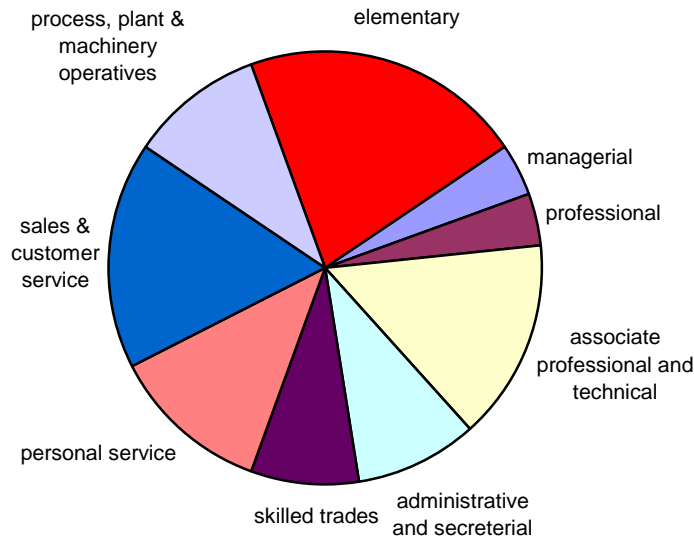
Latest statistical data available from: [http://statistics.dwp.gov.uk/asd/asd1/tabtools/tabtool\\_nd.asp](http://statistics.dwp.gov.uk/asd/asd1/tabtools/tabtool_nd.asp)



### 1.11 Vacancies handled by Jobcentre Plus

As the public employment service for Great Britain, Jobcentre Plus handle a significant share of all vacancies advertised by employers, albeit that vacancies notified to Jobcentre Plus do not represent the total number of vacancies in the whole economy.

**Vacancies notified by occupation: January to March 2010**



On average, 268 thousand vacancies a month were notified to Jobcentre Plus between January and March 2010. Most commonly these are for elementary occupations (21%) and sales/customer services (17%). 15% of notified vacancies are in the North West region compared to 10% in London, 5% Wales and 7% Scotland.

As at March 2010, the number of unfilled vacancies available to jobseekers was 245 thousand.

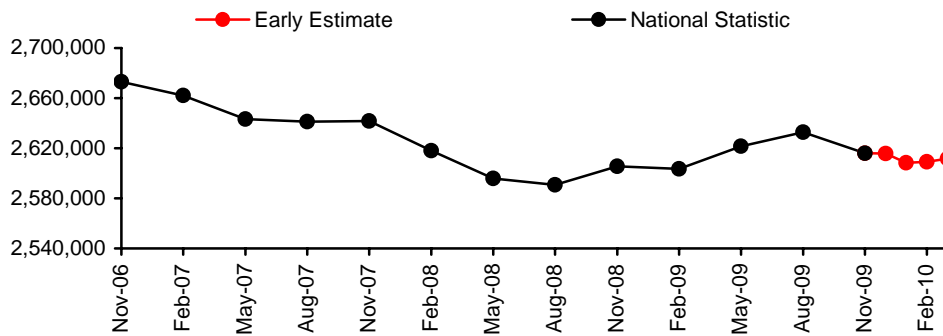
Latest statistical data available from: <http://www.nomisweb.co.uk>

## 2. Early Estimates for Working Age Inactive Benefit Client Group

### 2.1 Employment and Support Allowance / incapacity benefits (ESA/IB) client group

The early estimates for working age inactive benefit client groups are released monthly and are designed to give indicative, timely information ahead of the publication of full National Statistics. They are not a substitute for the National Statistics and will be replaced when the final quarterly National Statistics covering the same period are published.

National Statistics to November 2009 and Early Estimates of working age Employment and Support Allowance/ incapacity benefits (ESA/IB) client group: December 2009 to March 2010.



The working-age Employment and Support Allowance and incapacity benefits (ESA/IB) early estimate for March 2010 is 2.61 million to the nearest 5,000. This represents a fall of 0.3 per cent since November 2009 (the latest National Statistic).

National Statistics are available for quarters up to the end of November 2009. Final figures for the quarter ending February 2010 will be released on 11<sup>th</sup> August 2010. The most recent National Statistics show 2.62 million individuals were in the ESA/IB client group at November 2009.

The figures are estimates of the final National Statistic, to give an indication of their accuracy, over the past year the early estimates have been revised by an average of 0.2 per cent. See 'Notes' for more information.

**Table 2.1 Point estimate for the Early Estimates of numbers in working age ESA/IB client group: December 2009 to March 2010**

	<i>Thousands</i>	
	National Statistics	Early Estimate
	Number of Claimants	Number of Claimants
Nov-08	2,605.51	
Feb-09	2,603.54	
May-09	2,621.43	
Aug-09	2,632.74	
Nov-09	2,618.38	
Dec-09		2,615
Jan-10		2,610
Feb-10		2,610
Mar-10		2,610

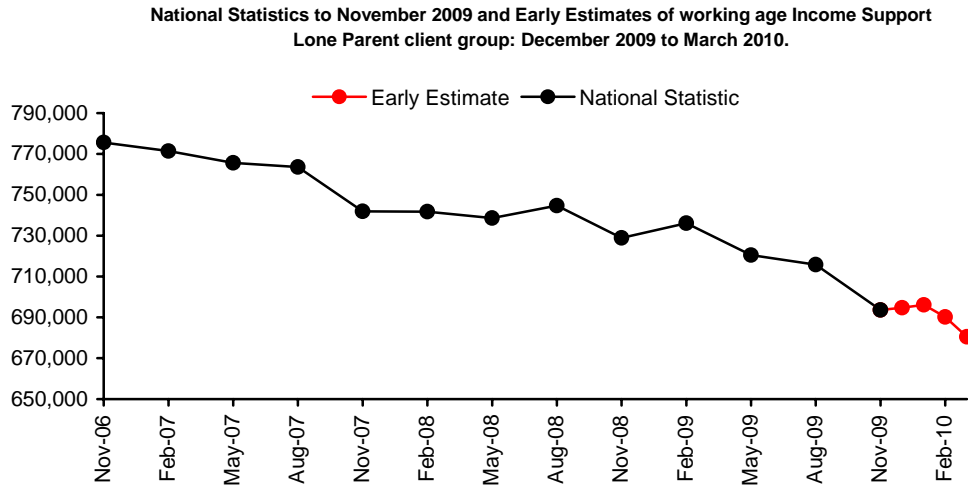
**Notes:**

1. ESA/ incapacity benefits: From November 2008 the "incapacity benefits group" includes Employment and Support Allowance (ESA). ESA replaced Incapacity Benefit and Income Support paid on the grounds of incapacity for new claims from 27 October 2008. Prior to this the "incapacity benefits group" referred to claimants of Incapacity Benefit or Severe Disablement Allowance including people claiming IS on the grounds of Incapacity.



## 2.2 Income Support Lone Parent (ISLP) client group

The early estimates for working age inactive benefit client groups are released monthly and are designed to give indicative, timely information ahead of the publication of full National Statistics. They are not a substitute for the National Statistics and will be replaced when the final quarterly National Statistics covering the same period are published.



The working-age Income Support Lone Parent (ISLP) early estimate for March 2010 is 680 thousand to the nearest 5,000. This represents a fall of 2.2 per cent since November 2009 (the latest full National Statistic figure).

National Statistics are available for quarters up to the end of November 2009. Final figures for the quarter ending February 2010 will be released on 11<sup>th</sup> August 2010. The most recent National Statistics show 696 thousand individuals were in the ISLP client group at November 2009.

The figures are estimates of the final National Statistic, to give an indication of their accuracy, over the past year the early estimates have been revised by an average of 0.4 per cent. See 'Notes' for more information.

**Table 2.2 Point estimate for the Early Estimates of numbers in working age ISLP client group: December 2009 to March 2010**

*Thousands*

	<b>National Statistics</b>	<b>Early Estimate</b>
	Number of Claimants	Number of Claimants
Nov-08	728.98	
Feb-09	736.04	
May-09	720.48	
Aug-09	715.73	
Nov-09	695.72	
Dec-09		695
Jan-10		695
Feb-10		690
Mar-10		680

**Notes:**

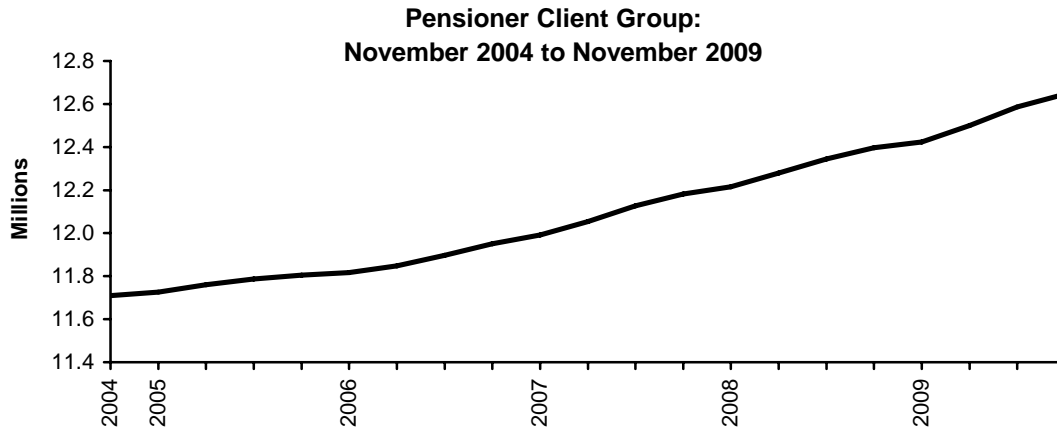
- Income Support Lone Parents: claimants on Income Support with child under 16 and no partner. New and repeat customers with the following conditions are no longer be entitled to Income Support:
  - A youngest child aged 12 or over from 24 November 2008;
  - A youngest child aged 10 or over from 26 October 2009.

Latest statistical data available from: [http://statistics.dwp.gov.uk/asd/early\\_ests.asp](http://statistics.dwp.gov.uk/asd/early_ests.asp)

### 3. Pensioners

#### 3.1 Pensioner client group

The Pensioner client group covers claimants, over State Pension age (for the dates shown here, 60 for females and 65 for males), of at least one of the following benefits: State Pension, Pension Credit, Attendance Allowance, Widow's Benefit, Disability Living Allowance, Incapacity Benefit, and Severe Disablement Allowance. They are split into statistical groups that reflect their main reason for claiming benefit.



At November 2009 there were 12.6 million claimants in the Pensioner Client Group, an increase of 250 thousand since November 2008. Of these, 20% were in receipt of Pension Credit. 50% of these Pension Credit claimants were also claiming Attendance Allowance or Disability Living Allowance.

**Table 3.1 Pensioner Client Group recipients: November 2004 – November 2009**

Thousands

	Total	SP and PC: Disabled	SP and PC: Not Disabled	SP but not PC: Disabled	SP but not PC: Not Disabled	PC but not SP: Disabled	PC but not SP: Not Disabled	Neither SP nor PC: Disabled	Neither SP nor PC: Not Disabled
Nov -04	11,710.58	1,028.05	1,255.69	1,280.46	7,938.11	73.38	72.83	37.97	24.10
Feb -05	11,726.47	1,037.26	1,268.33	1,273.89	7,938.28	73.49	73.51	37.74	23.98
May -05	11,760.74	1,052.43	1,281.60	1,281.06	7,939.49	73.17	72.88	37.11	23.00
Aug -05	11,786.58	1,065.96	1,280.72	1,298.46	7,933.04	73.71	73.80	37.60	23.30
Nov -05	11,804.43	1,075.10	1,278.42	1,307.14	7,929.69	75.54	75.42	39.48	23.63
Feb -06	11,817.23	1,081.17	1,277.97	1,315.46	7,934.50	73.53	73.75	37.77	23.08
May -06	11,847.97	1,088.48	1,278.31	1,322.93	7,949.50	73.76	74.05	38.06	22.88
Aug -06	11,896.50	1,100.55	1,274.33	1,338.09	7,973.44	74.29	74.59	38.42	22.78
Nov -06	11,949.62	1,113.70	1,269.09	1,351.57	8,004.82	74.87	74.34	38.69	22.54
Feb -07	11,992.45	1,114.06	1,260.09	1,356.42	8,052.20	74.56	74.19	38.60	22.33
May -07	12,053.77	1,122.36	1,252.29	1,370.93	8,097.85	74.82	74.26	38.97	22.29
Aug -07	12,127.16	1,133.46	1,243.25	1,389.71	8,152.28	74.55	73.62	38.92	21.37
Nov -07	12,182.27	1,140.25	1,234.23	1,403.83	8,197.32	74.21	73.15	38.72	20.56
Feb -08	12,216.39	1,139.13	1,223.86	1,410.21	8,237.94	73.56	72.92	38.75	20.02
May -08	12,279.39	1,144.14	1,214.40	1,428.68	8,287.34	73.68	72.69	38.97	19.50
Aug -08	12,344.41	1,155.40	1,206.30	1,448.69	8,331.36	73.72	72.04	38.76	18.14
Nov-08	12,396.06	1,164.55	1,201.42	1,464.57	8,365.41	73.51	71.41	38.17	17.02
Feb-09	12,423.79	1,159.85	1,193.82	1,469.67	8,402.45	73.03	70.86	37.81	16.31
May-09	12,500.78	1,167.68	1,189.05	1,489.12	8,457.71	73.20	70.59	37.76	15.66
Aug-09	12,586.92	1,177.58	1,184.10	1,512.11	8,519.54	72.79	69.22	36.72	14.88
Nov-09	12,645.64	1,182.96	1,178.49	1,526.14	8,565.92	72.63	68.50	36.54	14.46

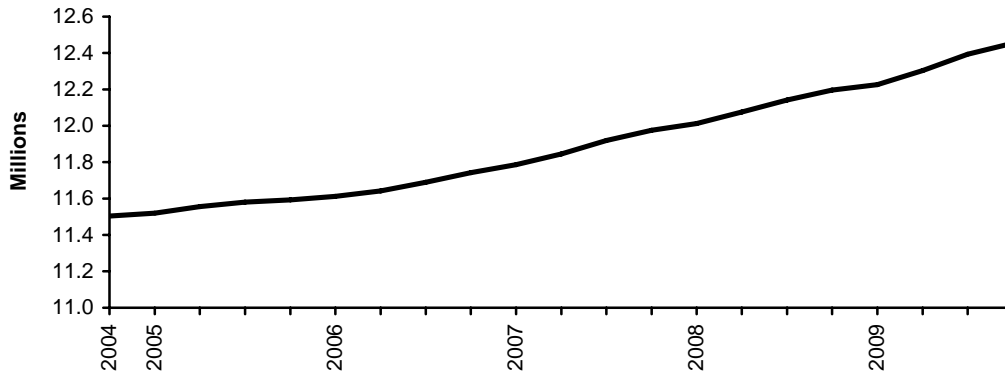
Latest statistical data available from: <http://statistics.dwp.gov.uk/asd/tabtool.asp>



### 3.2 State Pension

State Pension (SP) was introduced on 1st January 1909 and is paid to people who have reached the state pension age and who fulfil the residency and contributions conditions. The state pension age for men is 65 whilst the State Pension age for women born on or after 6 April 1950 but before 6 April 1955 is rising from 60 to 65 between 2010 and 2020. The State Pension age for women born on or after 6 April 1955 but before 6 April 1959 will be 65. State Pension age will increase for both men and women from age 65 to 68 between 2024 and 2046.

**State Pension Recipients: November 2004 to November 2009**



At November 2009, there were 12.45 million claimants of State Pension, a rise of 258 thousand on a year earlier. Of these, 38% were male and 62% female.

The average weekly amount in payment at November 2009 was £102.52, a rise of £6.07 since November 2008.

In quarter to November 2009, there were a total of 167 thousand new claims for State Pension which represents 1.3% of the caseload. Over the same period, 124 thousand claimants left the benefit, representing 1% of the caseload at November 2009.

In the year to November 2009, there were a total of 708 thousand new claims for State Pension and 507 thousand claims were closed.

**Table 3.2 State Pension recipients: November 2004 – November 2009**

	All	Male	Female
Nov -04	11,504.32	4,315.80	7,188.52
Feb -05	11,519.88	4,322.52	7,197.36
May -05	11,556.81	4,342.15	7,214.66
Aug -05	11,580.50	4,354.75	7,225.74
Nov -05	11,592.75	4,362.20	7,230.55
Feb -06	11,611.59	4,369.79	7,241.80
May -06	11,641.83	4,379.54	7,262.29
Aug -06	11,689.12	4,393.60	7,295.52
Nov -06	11,742.01	4,408.91	7,333.10
Feb -07	11,785.67	4,418.99	7,366.68
May -07	11,846.43	4,437.99	7,408.44
Aug -07	11,919.12	4,463.09	7,456.04
Nov -07	11,976.03	4,484.97	7,491.06
Feb -08	12,011.54	4,499.53	7,512.02
May -08	12,074.99	4,526.79	7,548.20
Aug -08	12,142.20	4,555.63	7,586.57
Nov -08	12,196.44	4,578.74	7,617.70
Feb -09	12,226.26	4,594.18	7,632.08
May -09	12,304.07	4,633.62	7,670.44
Aug -09	12,393.84	4,678.30	7,715.54
Nov -09	12,453.99	4,709.50	7,744.49

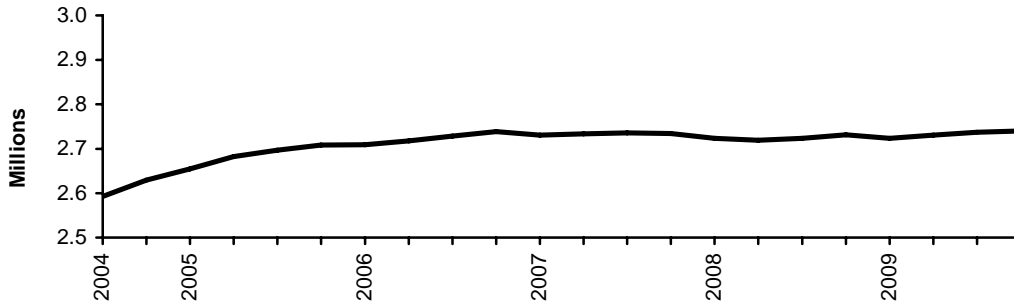
Latest statistical data available from: <http://statistics.dwp.gov.uk/asd/tabtool.asp>



### 3.3 Pension Credit

*Pension Credit (PC) was introduced on 6th October 2003 and replaced Minimum Income Guarantee (MIG). For people aged 60 or over, the Guarantee Credit element guarantees an income at a set level. People aged 65 or over (and couples where one member is 65 or over) may also be entitled to Savings Credit if they have modest income from savings, investments or a second pension.*

**Pension Credit Recipients: November 2004 to November 2009**



At November 2009, there were 2.74 million claimants of Pension Credit (3.35 million including partners), a rise of 3 thousand on the previous quarter. Of these, 953 thousand claimed Guarantee Credit only, 1.2 million claimed Guarantee and Savings Credit, and 578 thousand were claiming Savings Credit only.

The average weekly amount of Pension Credit in payment at November 2009 was £56.44, a rise of £3.62 since November 2008.

Experimental statistics on benefit flows show there were 260 thousand new claims to Pension Credit in the year to November 2009. There were 263 thousand new claims to Pension Credit in the year 2008/2009. A small number of claims take a long time to process and are still outstanding at the cut off point for producing these statistics. This means that the statistics undercounts the final number of claims by a small percentage (around two percent).

**Table 3.3 Pension Credit claimants: November 2004 – November 2009**

	Total	Guarantee Credit only	Guarantee Credit & Savings Credit	Savings Credit only	Thousands Still on Minimum Income Guarantee
Nov -04	2,629.58	759.90	1,298.96	570.58	0.14
Feb -05	2,654.67	763.15	1,313.11	578.36	0.06
May -05	2,682.73	767.26	1,321.68	593.74	0.04
Aug -05	2,696.66	772.40	1,317.18	607.04	0.04
Nov -05	2,708.05	776.94	1,313.48	617.60	0.04
Feb -06	2,709.22	773.16	1,332.11	603.93	0.04
May -06	2,717.39	775.57	1,343.23	598.56	0.02
Aug -06	2,728.15	787.30	1,334.41	606.41	0.02
Nov -06	2,738.56	798.13	1,325.87	614.54	0.02
Feb -07	2,730.94	800.11	1,327.78	603.03	0.03
May -07	2,733.50	805.73	1,330.09	597.65	0.02
Aug -07	2,735.72	814.42	1,321.95	599.33	0.03
Nov -07	2,734.54	823.57	1,310.05	600.90	0.03
Feb -08	2,723.14	865.19	1,265.43	592.50	0.02
May -08	2,719.14	882.07	1,246.24	590.80	0.03
Aug -08	2,723.53	889.74	1,241.62	592.15	0.03
Nov -08	2,731.37	901.23	1,232.25	597.86	0.03
Feb -09	2,723.61	913.40	1,214.69	595.49	0.03
May -09	2,730.56	925.71	1,205.23	599.59	0.03
Aug -09	2,737.29	935.59	1,199.61	602.05	0.03
Nov -09	2,739.86	953.04	1,209.00	577.79	0.03

1. Pension Credit replaced MIG on the 6<sup>th</sup> Oct 2003, however a small number of residual cases remain on MIG.

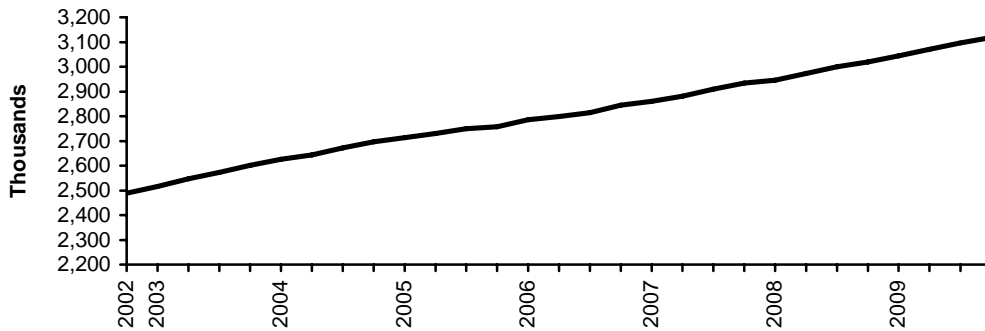
Latest statistical data available from: <http://statistics.dwp.gov.uk/asd/tabtool.asp>

## 4. Disabled and Carers

### 4.1 Disability Living Allowance

*Disability Living Allowance (DLA) was introduced on 1st April 1992 and is a benefit for people who have become disabled before the age of 65 and who need assistance with personal care or mobility.*

**Disability Living Allowance Recipients:  
November 2002 to November 2009**



At November 2009, 3.12 million people were receiving Disability Living Allowance (not including suspended cases), a rise of 99 thousand on a year earlier. Of these claimants 50% were male. Both the male and female caseloads are rising, males by 50 thousand and females by 50 thousand in the year to November 2009.

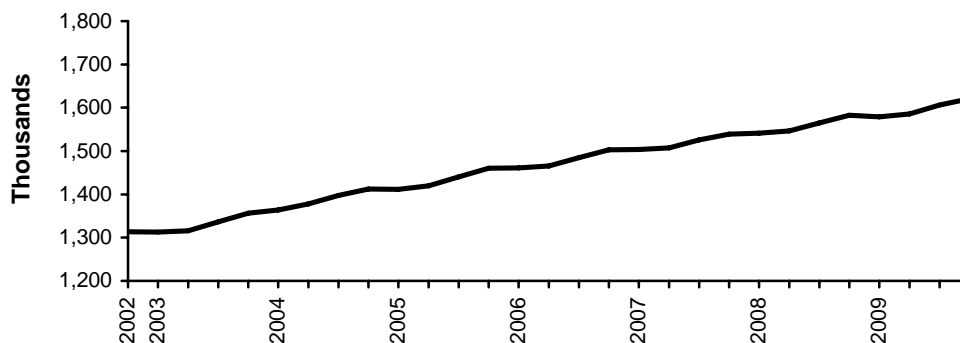
At November 2009, 10% of recipients were children, 57% were working age and 33% were pension age (a small number are an unknown age).

Latest statistical data available from: <http://statistics.dwp.gov.uk/asd/tabtool.asp>

### 4.2 Attendance Allowance

*Attendance Allowance (AA) was introduced on 6th December 1971 and is a benefit for people over the age of 65 who are so severely disabled, physically or mentally, that they need a great deal of help with personal care or supervision. Those requiring constant help receive the higher rate of benefit.*

**Attendance Allowance Cases in Payment:  
November 2002 to November 2009**



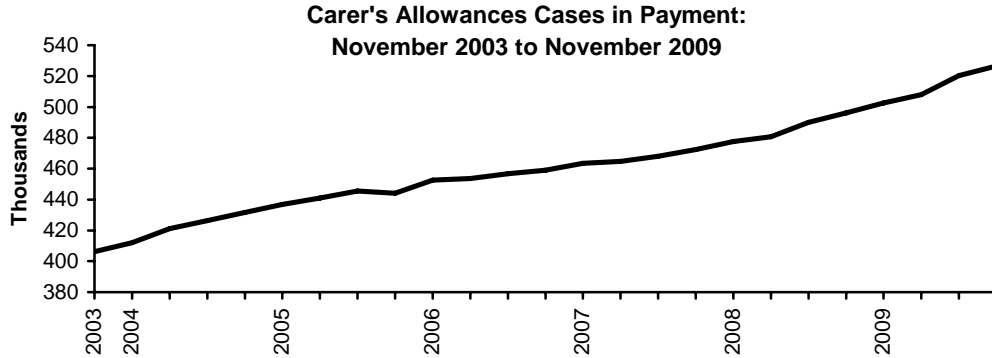
At November 2009 there were 1.62 million people receiving Attendance Allowance (excluding suspended cases), a rise of 38 thousand on a year earlier. Of these, 33% were male and 67% female. Both the male and female caseloads are rising, males by 19 thousand and females by 20 thousand in the year to November 2009. At November 2009, 66% were aged 80 or over.

Latest statistical data available from: <http://statistics.dwp.gov.uk/asd/tabtool.asp>



### 4.3 Carer's Allowance

Carer's Allowance (CA) was introduced on 5th July 1976; it is paid to carers who look after a severely disabled person for at least 35 hours a week. The severely disabled person must be getting either higher or middle rate DLA care component or AA or maximum rate Constant Attendance Allowance with their War Pension or Industrial Injuries Disablement Benefit.



At November 2009, there were 527 thousand people receiving Carer's Allowance (not including underlying entitlement cases). 27% of claimants were male, and 73% female.

At November 2009, there were a further 443 thousand people entitled to Carer's Allowance but not receiving any payment due to overlapping benefit provisions (i.e. underlying entitlement cases).

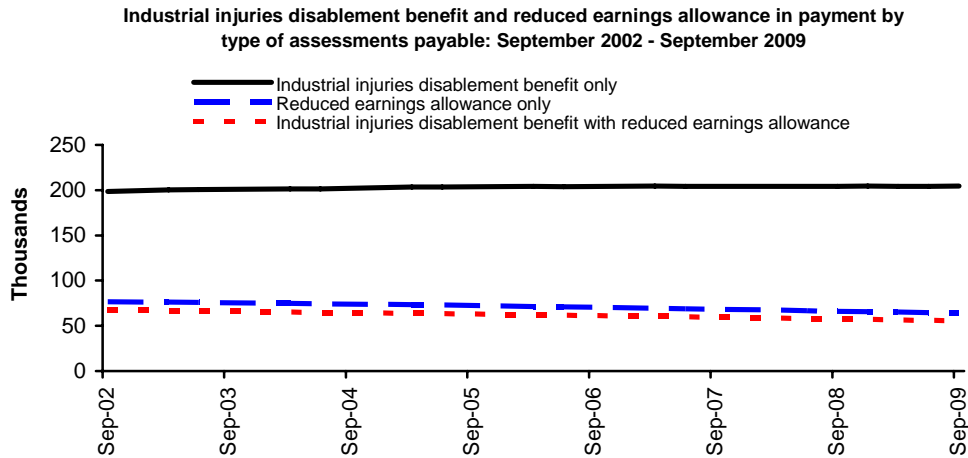
**Table 4.1 Awards currently in payment for Disability Living Allowance, Carer's Allowance and Attendance Allowance: November 2002 – November 2009**

	<i>Thousands</i>		
	Disability Living Allowance	Attendance Allowance	Carer's Allowance <sup>1</sup>
Nov -02	2,488.49	1,313.74	-
Feb -03	2,516.13	1,312.75	-
May -03	2,547.09	1,315.64	-
Aug -03	2,573.54	1,336.21	400.18
Nov -03	2,601.88	1,356.31	406.23
Feb -04	2,625.39	1,363.81	412.12
May -04	2,644.28	1,377.35	421.18
Aug -04	2,672.16	1,397.30	426.34
Nov -04	2,696.28	1,412.50	431.66
Feb -05	2,712.91	1,411.33	436.94
May -05	2,729.72	1,419.42	441.03
Aug -05	2,749.48	1,440.09	445.43
Nov -05	2,757.64	1,460.25	444.09
Feb -06	2,785.68	1,460.57	452.54
May -06	2,799.16	1,465.59	453.54
Aug -06	2,814.29	1,484.58	456.70
Nov -06	2,845.75	1,503.05	458.93
Feb -07	2,860.79	1,503.85	463.50
May -07	2,881.83	1,507.50	464.67
Aug -07	2,909.98	1,525.61	468.06
Nov -07	2,934.44	1,539.32	472.42
Feb -08	2,945.57	1,541.58	477.66
May -08	2,973.54	1,546.68	480.73
Aug -08	2,999.65	1,565.00	490.03
Nov -08	3,019.70	1,582.81	496.14
Feb-09	3,043.99	1,578.64	502.50
May-09	3,070.61	1,585.79	507.97
Aug-09	3,096.30	1,605.92	520.35
Nov-09	3,119.01	1,621.03	526.62

1. Data is not available prior to August 2003.

#### 4.4 Industrial Injuries Disablement Benefit

*Industrial Injuries Disablement Benefit (IIDB) was introduced on 5th July 1948 and is a benefit for people who are disabled because of an industrial accident or prescribed industrial disease. Since 1st October 1986 any claim resulting in an assessment of less than 14% disabled does not normally attract benefit.*



There were 324 thousand people claiming under the Industrial Injuries Disablement Benefit scheme in September 2009, of whom 63% received Industrial Injuries Disablement Benefit only, 20% received Reduced Earnings Allowance only, and 17% received both. The number of people claiming benefit was 1.1% lower than in September 2008. The average weekly payment was £47.45.

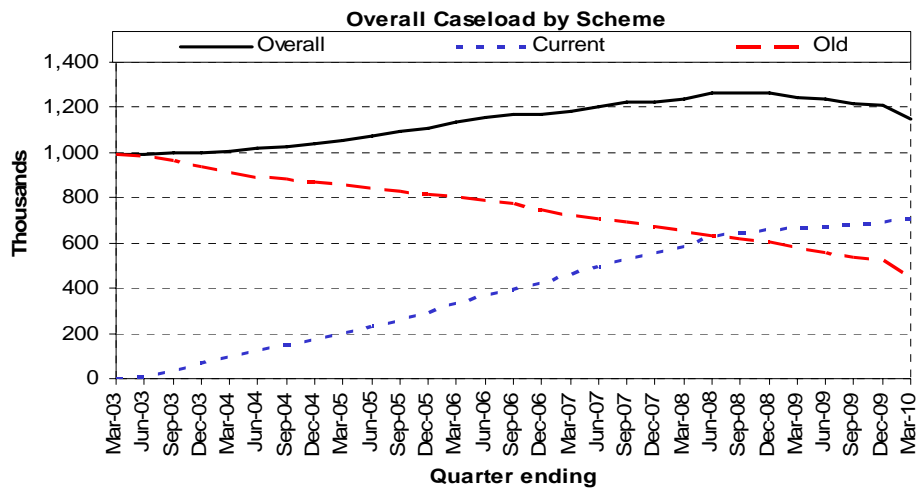
Latest statistical data available from: <http://statistics.dwp.gov.uk/asd/iidb.asp>

## 5. Families & Children

### 5.1 Child Support Agency cases

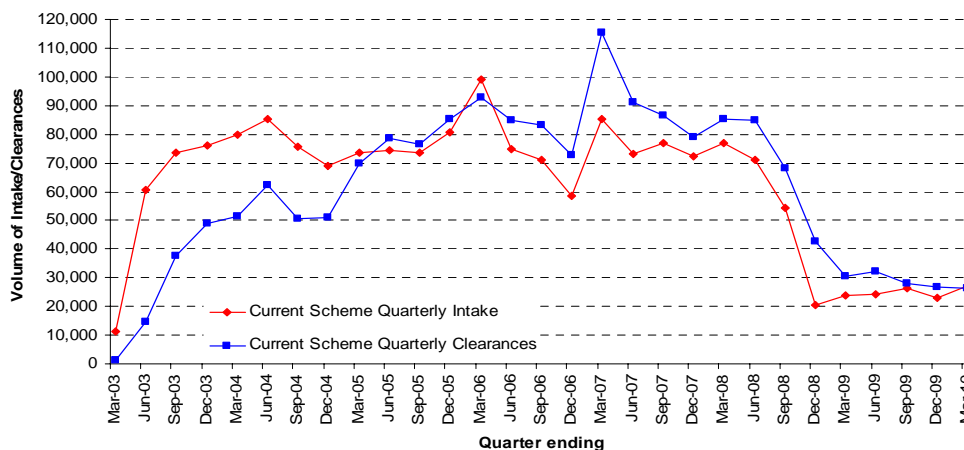
The Child Maintenance and Enforcement Commission (CMEC), established as a non-departmental public body under the Child Maintenance and Other Payments Act 2008, is responsible for the child maintenance system in Great Britain. The Commission assumed responsibility for the Child Support Agency (CSA) from the Department for Work and Pensions (DWP) on 1 November 2008.

These statistics, produced by the Child Maintenance and Enforcement Commission in conjunction with the DWP Information Directorate, contain the most up-to-date tables and breakdowns on the CSA's two existing statutory child maintenance schemes. The CSA statistics presented here were released on 28th April 2010.



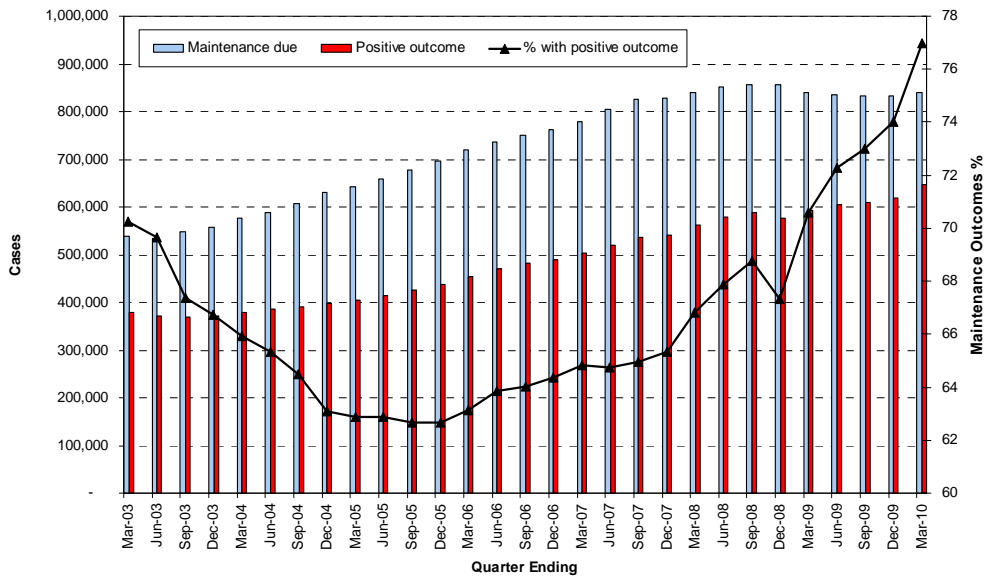
At the end of March 2010, the CSA live and assessed caseload stood at 1.15 million.

### Current Scheme Intake/Clearances - March 2003 to March 2010



The volume of uncleared current scheme applications has fallen by 3,200 since December 2009, and is currently at 22,300. This represents a fall of 13% since December 2009.

### Cases Benefiting from Maintenance



In the quarter ending March 2010, 77% of all cases in which maintenance was due had either received maintenance via the CSA collection service, or had a maintenance direct arrangement in place.

Latest statistical data available from: <http://www.childmaintenance.org/en/publications/index.html>



## NOTES

### 1. The Statistical Summary

The Department for Work and Pensions (DWP) publish a Statistical Summary document each month. It is used for the release of a wide range of DWP statistics

The DWP Statistical Summary brings together key National Statistics on DWP administered benefits, some employment programmes and JSA (Jobseeker's Allowance) sanctions and vacancies. To provide a more complete picture of DWP responsibility, statistics on Housing Benefit and Council Tax Benefit (administered by Local Authorities) and the Child Support Agency are also included.

The Summary is published monthly, containing Housing Benefit and Council Tax Benefit together with early estimates of inactive benefit caseloads. Each quarter (in May, August, November and February), a larger document also contains the detail of DWP administered benefits, some employment programmes, JSA sanctions, vacancies and the Child Support Agency.

Alongside the Statistical Summary, there are a large number of tables which enable the user to delve in to the detail. These are provided to the user as:

- The DWP Tabulation Tool – for DWP administered benefits and employment programmes the Tabulation Tool provides the user with an interactive tool to select one of thousands of possible tabulations. This is available at: <http://statistics.dwp.gov.uk/asd/tabtool.asp>. A similar Tabulation Tool, derived from 5% sample data, is also available. Whenever possible, 100% data should be used in preference to 5% estimates, as these are both more accurate and form DWP's headline statistics. Some statistics remain outside the scope of the Tabulation Tool but will continue to be available via the internet as pre-defined summary tables.
- Identical numbers via Nomis (<https://www.nomisweb.co.uk/Default.asp>)
- Separate detailed tables on Housing Benefit and Council Tax Benefit; Employment and Support Allowance; Claimants on out of work benefits
- Tables broken down by Lower Super Output Area (LSOA)
- Other tables and background information via links on the Tabulation Tool pages (e.g. links to long time series spreadsheets; descriptions of the benefit.)

The National Statistics paper "DWP statistics transformed: the modernisation of the DWP's data sources and statistical publications" announced major changes to the National Statistics the Department publishes in 2005. Much of this content is still relevant and is available from:

[http://statistics.dwp.gov.uk/asd/asd1/stats\\_consultation/modstats.pdf](http://statistics.dwp.gov.uk/asd/asd1/stats_consultation/modstats.pdf)

### 2. Statistical groups

DWP has a typology to define Statistical Groups within the client group classifications. The aim of the Statistical Group typology is to present each person by the main reasons they are in contact with the Department. Like the client group classification, each client is classified just once, permitting the estimation of the total number of people claiming one or more benefits. The Statistical Group hierarchy is:

- |   |                                  |
|---|----------------------------------|
| a] Jobseeker  | e] Other income-related benefits |
| b] Employment and Support Allowance and incapacity benefits | f] Disabled                      |
| c] Lone parents   | g] Bereaved                      |
| d] Carers   | h] Housing Benefit               |
|   | i] State Pension only recipients |

From November 2008 the "incapacity benefits statistical group" includes Employment and Support Allowance (ESA). ESA replaced Incapacity Benefit and Income Support paid on the grounds of incapacity for new claims from 27th October 2008. Prior to this the "incapacity benefits group" covered people on Incapacity Benefit or Severe Disablement Allowance, including people claiming Income Support on the grounds of incapacity.



### 3. Jobseeker's Allowance figures at ONS

The preferred source of numbers for Jobseeker's Allowance is the ONS claimant count figure; these are more up to date and contain clerical cases. However the reason we use the DWP JSA figures is that they are consistent with the other benefits used to produce DWP National Statistics, and permit a wider set of breakdowns. The ONS figures are available from <http://www.statistics.gov.uk/>.

### 4. Flows on and off benefit

Also available are quarterly experimental figures on flows on and off all the main benefits. The historic flows information is available on the tabulation tool up to February 2008. Pension credit information is available via a one-click table: [http://83.244.183.180/100pc/pc/tabtool\\_pc.html](http://83.244.183.180/100pc/pc/tabtool_pc.html)

### 5. Early Estimates

The Early Estimates are designed to give indicative, timely information ahead of the publication of full National Statistics. They are not a substitute for the National Statistics and will be replaced when the final quarterly National Statistics covering the same period are published.

To give an indication of their accuracy, over the past year the early estimates for ESA/IB have been revised by an average of 0.2 per cent, with the biggest revision being 0.33 percent and the smallest being 0.07 percent. The early estimates for ISLP have been revised by an average of 0.4 per cent, with the biggest revision being 1.06 percent and the smallest being 0.07 percent.

More detailed information can be accessed via the following links:

[http://statistics.dwp.gov.uk/asd/asd1/early\\_ests/technical\\_document\\_final.pdf](http://statistics.dwp.gov.uk/asd/asd1/early_ests/technical_document_final.pdf)

[http://statistics.dwp.gov.uk/asd/asd1/early\\_ests/QandA\\_Early\\_Estimates\\_final.pdf](http://statistics.dwp.gov.uk/asd/asd1/early_ests/QandA_Early_Estimates_final.pdf)

### 6. Welfare Reform

The Lone Parent Obligation policy came into effect from 24 November 2008; Lone Parents (LPs) with a youngest child aged 12 or over were no longer able to make a new or repeat claim for Income Support (IS) solely on the basis of their parental status. Existing IS LPs with a youngest child aged 12 or over are having their eligibility removed over a period of time commencing 2 March 2009. From October 2009 this policy was extended to LPs with a youngest child aged 10 or 11 and from October 2010 the policy will be extended to LPs with a youngest child aged 7 or over.

Most effected LPs will leave IS and claim Jobseeker's Allowance (JSA). However, there are exceptions to these rules where the youngest child can legitimately be over the ages mentioned above. Similarly, some former LPs remain on IS for other reasons (e.g. they have a long term caring responsibility and claim Carer's Allowance). Through analysis of the effected claimants over the next quarters, it can be decided if there is a requirement to change the structure of IS LP statistics. In the meantime, the IS LP series will continue to be defined as 'single IS claimants with a child under 16'.

The introduction of the new Jobseeker's Regime and Flexible New Deal (JRFND) will impact on existing statistics for the JSA employment programmes (including the New Deals for Young People, 25 Plus, 50 Plus and Employment Zones). These programmes have been gradually phased out from April 2009 as new customers stop being referred to the existing programmes and current claims gradually transferred to JRFND. Further information regarding the roll out of FND, and the impact on existing New Deal statistics, is available at: [http://research.dwp.gov.uk/asd/asd1/tabtools/tabtool\\_fnd.asp](http://research.dwp.gov.uk/asd/asd1/tabtools/tabtool_fnd.asp)

The age at which women reach State Pension age will gradually increase from 60 to 65 between April 2010 and April 2020. The first quarterly statistical summary to be affected will be the November 2010 publication and the first early estimates to be affected will be released in June 2010. The changes will introduce a small increase to the number of working age benefit recipients and a small reduction to the number of pension age recipients. There will also be changes to the way we report benefit recipients as a proportion of the working population. We will provide more information on how the change affects our statistics, including advice on making time series comparisons, alongside their publication. For general information about the change to State Pension age, please see: [http://www.direct.gov.uk/en/Pensionsandretirementplanning/StatePension/DG\\_4017919](http://www.direct.gov.uk/en/Pensionsandretirementplanning/StatePension/DG_4017919)



## 7. Known Issues, Changes and Revisions to the Statistical Summary

Flexible New Deal (FND) sanctions are not currently included in the Sanctions Tabulation Tool. The Sanctions National Statistics are currently under review with a view to reflecting new Adjudication Codes for FND and 1-week sanctions linked to mandatory interviews. These are currently excluded.

Information for leavers on New Deal for Disabled People and New Deal for 50+ is not available. This is because these New Deals are not compulsory; therefore information on people leaving the New Deals is not recorded as rigorously as for compulsory New Deals. New Deal for Lone Parents is not compulsory; however in this case development work has taken place to enable participant and leavers measures to be determined accurately. It is not currently anticipated that similar development work will take place on NDDP and ND50+ as the caseloads on these new deals are relatively small and ND50+ will soon be subsumed into the Flexible New Deal.

Jobcentre Plus region has been removed from the New Deal for Lone Parents Tabulation Tool this quarter due to quality issues. We expect it to be re-instated in the August 2010 release.

Since the general election on 6 May 2010, new Parliamentary Constituency boundaries have been in effect. However, as this publication relates to a period prior to that election, these tables and associated Tabulation Tools use the previous boundaries. The May 2010 statistics will be released in November 2010 and will be broken down by the 2010 constituency boundaries.

Additional tables for HB / CTB caseload statistics (<http://statistics.dwp.gov.uk/asd/hbctb.asp>) include a new breakdown of recipients aged under 65 and aged 65 and over for both HB (table 8a) and CTB (table 14a). It is intended that this table will replace the current 'working age / elderly age' breakdown (tables 8 and 14 respectively) from the July 2010 release

The following smaller items have been revised or changed this quarter:

- The "Net Additional Pension (£ per week)" variable has been removed from the 5% sample State Pension Tabulation Tool due to coverage concerns.
- The "Free Milk Voucher" variable has been removed from the 5% sample for Income Support and Jobseeker's Allowance due to poor quality.
- The ability to perform a benefit combination time series of working age percentage of population has been removed due to a formatting error in those tables. These tables will be replaced for the August 2010 release.
- The "MIG/Non-MIG" indicator on the 100% benefit Tabulation Tool for Income Support has been removed following issues with the raw data. We expect this series to be reinstated in August 2010.

## 8. Notification of changes to the Summary

The next quarterly release of the Statistical Summary in August 2010 will include the following changes:

- Section 1.3, 1.4 and Table 1.2 in the Summary document will be changed to relate to combined Incapacity Benefit, Severe Disablement Allowance and Employment and Support Allowance data. This will provide a consistent time series. In Table 1.2, the Working Age/ Pension Age split will be replaced with a "benefit type" split to show the numbers on each of the three component benefits.

The next monthly release in June 2010 will include the following changes:

- The HB / CTB caseload statistics (<http://statistics.dwp.gov.uk/asd/hbctb.asp>) will include a new breakdown of recipients by family type, gender and age group.



## 9. Social Security and Child Support Appeals Tribunal (SSCSA)

The Independent Tribunal Service was introduced in 1984 to provide an independent appeals system. It was replaced by the Appeals Service (tAS) in April 2000. From 1st April 2006 the Appeals Service, was renamed as the Social Security and Child Support Appeals Tribunal (SSCSA) and became part of The Tribunals Service (a new Executive agency within the Department for Constitutional Affairs).

Responsibility for publishing statistics on the appeals now resides with SSCSA and they are currently working to publish statistical information via their website <http://www.tribunals.gov.uk/>, however in the interim the latest published figures are available here: <http://statistics.dwp.gov.uk/asd/gat.asp>. The contact for the SSCSA appeals data is: [TSSTATS@tribunals.gsi.gov.uk](mailto:TSSTATS@tribunals.gsi.gov.uk).

## 10. Fraud and Error statistics

National Statistics are published presenting six-monthly estimates of fraud and error in claims for Income Support, Jobseeker's Allowance, Pension Credit and Housing Benefit, along with an annual estimate of the level of fraud and error in the benefit system as a whole. One-off benefit reviews have been carried out from time to time to estimate fraud and error in claims for other benefits. Reports can be found at [http://research.dwp.gov.uk/asd/asd2/fraud\\_error.asp](http://research.dwp.gov.uk/asd/asd2/fraud_error.asp)

## 11. Take-Up of Income-Related Benefits

Publications contain information on the take-up of the main income-related benefits in Great Britain: Income Support, Pension Credit, Housing Benefit, Council Tax Benefit and Jobseeker's Allowance (income based). Take-up is measured in two ways. Expenditure take-up compares the total amount of benefit received in the course of a year with the total amount that would have been received if everyone took up their entitlement for the full period of entitlement. Caseload take-up compares the number of benefit claimants – averaged over the year – with the number who would be receiving if everyone took up their entitlement for the full period of entitlement. Data is sourced from the Family Resources Survey and administrative benefit records. Latest published figures are available at <http://research.dwp.gov.uk/asd/irb.asp>

## 12. Other National Statistics issued by the Department for Work and Pensions

Abstract of Statistics for Benefits and Contributions and Indices of Prices and Earnings (annual) – *provides a reference source for those people interested in the main aspects of benefits, contributions and indices of prices and earnings. Latest published figures: [http://statistics.dwp.gov.uk/asd/other\\_stats.asp](http://statistics.dwp.gov.uk/asd/other_stats.asp)*

Child Support Agency Quarterly Summary of Statistics – *provides statistics on the Child Support Agency. Latest published figures: <http://www.childmaintenance.org/publications/statistics.html>*

Family Resources Survey (annual) - *provides information on the incomes and circumstances of private households in the United Kingdom: <http://statistics.dwp.gov.uk/asd/frs>*

Households Below Average Income (annual) - *provides information on potential living standards as determined by disposable income, changes in income patterns over time and income mobility: <http://statistics.dwp.gov.uk/asd/hbai.asp>*

Industrial Injuries Disablement Benefit and Reduced Earnings Allowance Statistics (annual) – *provides statistics on current assessments and movements during statistical period. Latest published figures: <http://statistics.dwp.gov.uk/asd/iidb.asp>*

Industrial Injuries Disablement Benefit Quarterly Summary of Statistics – *provides statistics on people in receipt of Industrial Injuries Disablement Benefit, new claims and newly diagnosed prescribed diseases. Latest published figures: <http://statistics.dwp.gov.uk/asd/iidb.asp>*

National Insurance numbers allocated to overseas nationals (Previously migrant workers statistics – quarterly) *provides statistics on migrant workers. Latest published figures: [http://statistics.dwp.gov.uk/asd/tabtool.asp#ni\\_alloc](http://statistics.dwp.gov.uk/asd/tabtool.asp#ni_alloc)*



Neighbourhood Statistics – Quarterly ward and Lower Super Outputs Area caseloads for Income Support, Jobseeker’s Allowance, Incapacity Benefits, Disability Living Allowance, Attendance Allowance, Pension Credit and State Pension are available from: <http://83.244.183.180/NESS/page1.htm>

Pensioner Income Series (annual) - examines the levels, sources and distribution of pensioners' incomes and the position of pensioners within the population income distribution. Latest published figures: [http://statistics.dwp.gov.uk/asd/asd6/pensioners\\_income.asp](http://statistics.dwp.gov.uk/asd/asd6/pensioners_income.asp)

Second Tier Pension Provision (annual) – contains analysis of contracted out pension schemes. Latest published figures: [http://statistics.dwp.gov.uk/asd/asd1/dsu/second\\_tier/second\\_tier.asp](http://statistics.dwp.gov.uk/asd/asd1/dsu/second_tier/second_tier.asp)

Tax/Benefit Model Tables (annual) – designed to illustrate the weekly financial circumstances of a selection of hypothetical local authority and private tenants. Latest published figures: <http://statistics.dwp.gov.uk/asd/tbmt.asp>

### **13. Other statistical outputs issued by the Department for Work and Pensions**

Benefit Expenditure Tables - financial year historic information on benefit expenditure and caseloads, along with forecasts are available from: <http://statistics.dwp.gov.uk/asd/asd4/expenditure.asp>

Six Month Offer Statistics - a support package offering up to 500,000 opportunities for Jobseeker’s Allowance customers reaching six months unemployment. Latest published figures: [http://research.dwp.gov.uk/asd/6month\\_offer.asp](http://research.dwp.gov.uk/asd/6month_offer.asp)

Employment and Support Allowance - work capability assessment statistics. Latest published figures: [http://research.dwp.gov.uk/asd/workingage/esa\\_wca/esa\\_wca\\_arc.asp](http://research.dwp.gov.uk/asd/workingage/esa_wca/esa_wca_arc.asp)

Pathways to Work Officials Statistics - Pathways to Work comprises a comprehensive range of support and provision designed to improve customers' prospects of returning to work. Latest published figures: [http://research.dwp.gov.uk/asd/workingage/ib\\_ref\\_p2w.asp](http://research.dwp.gov.uk/asd/workingage/ib_ref_p2w.asp)