



Felixstowe-Nuneaton Route Work

2009-UK-26029-E

Part of Priority Project 26

European Economic Recovery Plan

Member States involved:

United Kingdom

Implementation schedule

Start date: July 2009

End date: December 2011

Implementing body:

Network Rail Limited

Budget:

National budget: €36,937,928

Total project cost covered by this Decision: €46,171,928

EU contribution: €9,234,000

Percentage of EU support:

Works: 20%

Additional information:

European Commission, DG TREN

http://ec.europa.eu/transport/index_en.html

Trans-European Transport Network Executive Agency (TEN-T EA)

<http://ec.europa.eu/tentea>

Beneficiary:

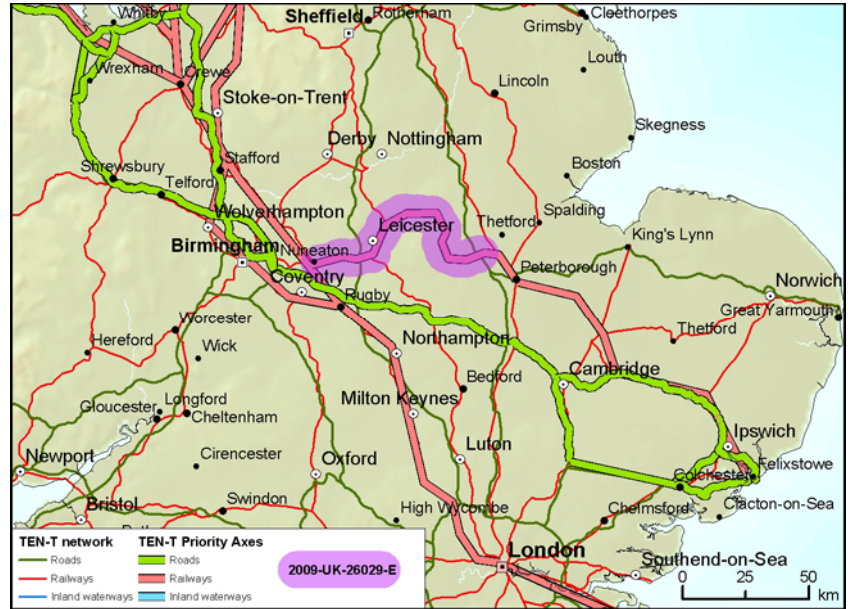
United Kingdom of Great Britain and Northern Ireland

www.dft.gov.uk

Implementing body:

Network Rail (infrastructure) Ltd

www.networkrail.co.uk



Source: TEN-T Executive Agency

This project aims to upgrade the Priority Axis 26 (railway/road axis Ireland/United Kingdom/continental Europe) from the port of Felixstowe to the West Midlands and connections with Priority Axis 14 (West Coast Main Line) at Nuneaton. This will facilitate the movement of international traffic by rail between the port and other UK regional distribution centres in the Midlands, North East, North West and Central Scotland.

The route work, which involves 29 sub-activities, will upgrade loading gauge capability specifically to enable the movement of 9' 6" containers on one metre high flat bed wagons - the most economical means of moving containers by rail within the UK. It will also provide increased capacity for intermodal freight services (to meet port forecasts up to 2030, and for a better loading/utilisation of intermodal services to 85% loading per train).

This increased capacity will:

- improve the network resilience for the movement of containers by rail from the port of Felixstowe
- increase rail mode share
- avoid additional intermodal services being routed via London (with consequential passenger benefits in the London area)
- support environmental sustainability
- reduce road congestion on the A14 corridor
- support regional policy objectives for transport, economic vibrancy and employment

DISCLAIMER

Individual financing Decisions will be adopted by the Commission only after all pending issues related to EC legislation, notably environmental law, have been resolved.